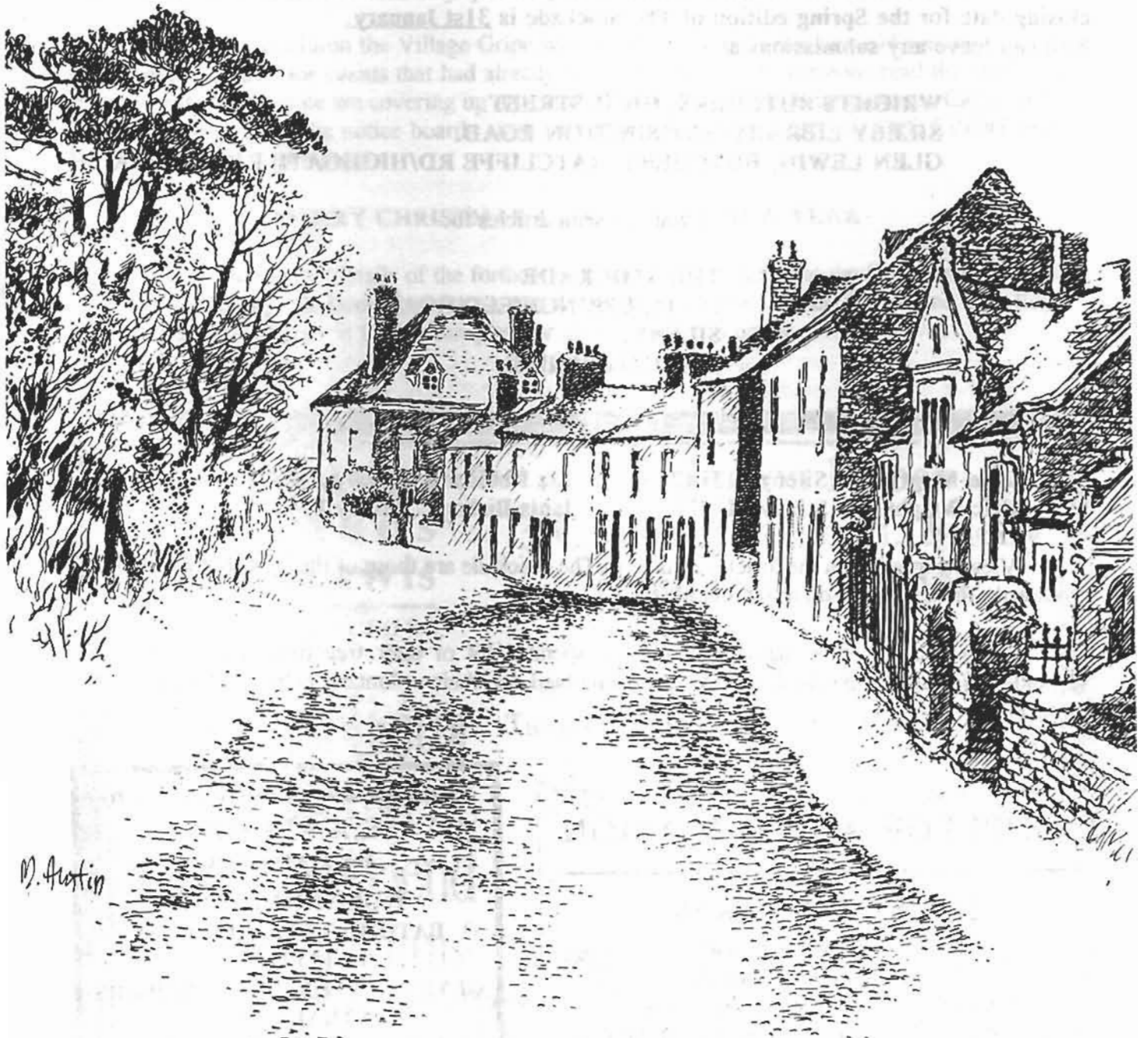


THE STOCKADE



Winter 1993

ISSUE : **11** Sileby Community Magazine

Welcome to the 11th edition of the Stockade. We would like to thank Mary Austin for drawing the front cover of Mountsorrel Lane in winter. Mary is a professional artist and we are most grateful to her for the time she spends voluntarily on many of the Stockade covers. If you would like to supply a cover for any future Stockades please contact one of the committee members.

We are always pleased to receive written articles, adverts, drawings for the front cover or photographs (old and new) relating to events in and around Sileby - so please don't forget this is YOUR COMMUNITY MAGAZINE, put pen to paper and let's hear from you! The closing date for the Spring edition of The Stockade is 31st January. You can leave any submissions at:-

**WRIGHTS BUTCHERS, HIGH STREET.
SILEBY LIBRARY, COSSINGTON ROAD.
GLEN LEWIN, BUTCHERS, RATCLIFFE RD/HIGHGATE RD CORNER.**

or you can send articles to:-

**THE STOCKADE
c/o 16, SPRINGFIELD ROAD,
SILEBY,
LEICESTERSHIRE.**

Editorial Committee:-

**Tom Mugridge Sileby 813142
Eric Wright Sileby 814472**

**Liz Robinson Sileby 812871
Janis Bishop Sileby 814754**

Views expressed in the articles printed in The Stockade are those of the contributors and not necessarily those of the Editorial Committee.

Many people, other than the committee spend a lot of their free time working for the Stockade. We would like to thank everyone involved for their voluntary help, it is very much appreciated.

CAKES FOR ANY OCCASION

CHRISTMAS CAKES

Original cakes to order
Wedding Christening
Anniversary Birthday Novelty
OR ANY TYPE OF CAKE REQUIRED

JULIE * SILEBY 814400

**Christmas Greetings from
L.A.ALLSOP
PLUMBERS
QUENIBOROUGH
BATHROOMS & KITCHENS
FITTED
GENERAL PLUMBING & REPAIRS
CENTRAL HEATING
ALL GAS BOILERS & FIRES
SERVICED
OLD ESTABLISHED FAMILY
BUSINESS
CORGI & N.A.P.H.M.S.
REGISTERED CONTRACTOR
Tel. Leicester (0533) 606053**

Editorial

Firstly let us wish you all a very Merry Christmas and a Happy New Year and to extend our heartfelt thanks to everyone who has helped us over the past year. All work done on the Stockade is voluntary so without the help of many of you and the valued support of the local businesses we would not be able to produce our community magazine.

We, on the committee thought Christmas had come early when we sat down to prepare this edition and saw all the articles, poems and items we had received. This does not mean you can stop sending articles to us but it has meant some items have had to be held over for the Spring edition.

In a previous edition the Village Gripe was about people not removing old posters from the village notice boards for events that had already happened. Obviously someone read the article for it seems that some people are covering up or removing posters for forthcoming events! Carry on the good work in keeping the notice boards clear - BUT PLEASE WAIT UNTIL THE EVENT HAS HAPPENED - Lecture over!

MERRY CHRISTMAS AND A HAPPY NEW YEAR

P.S. Look out for details of the forthcoming Theatre attraction that the Stockade is bringing to the village on December 9th at The Community Centre. Father Brown and The Royal Theatre Mystery - it'll be a fun play for all the family to enjoy.

**Edward
Hands
& Lewis**
SOLICITORS

Cossington House
3 Cossington Road, Sileby
Telephone: 816699

**Your Solicitor
should be
a learned friend
...why not talk to us?**

**We are open 9.30 am to 4 pm Monday,
Tuesday, Wednesday, Thursday and Friday**

**Telephone 816699 for an appointment or
call in and see us.**

Local Sileby Solicitors
Open each weekday

MATRIMONIAL MOVING HOUSE WILLS
PROBATE IN YOUR DEFENCE
COMPENSATION

SILEBY DIRECTORY OF CLUBS & ORGANISATIONS

Since the last edition of the Stockade we have heard from Loughborough Library with regard to updating their directory on Sileby's clubs. As you're no doubt aware the Stockade has been trying to compile it's own directory so it seems more than sensible to combine efforts. The Stockade committee would still like to hear from any groups, clubs and organisations in the village who would like to be included in the directory. Any information received now will be passed through to Charlotte Bithell who is the librarian for Sileby Library and she in turn will let us have any extra information.

LIBRARY NEWS



LEICESTERSHIRE
COUNTY COUNCIL
LIBRARIES AND
INFORMATION SERVICE
JOSEPH C KENNEDY, MA, FLA.
D I R E C T O R

Sileby Library holds a permanent information file on the local area which is widely used and can be a very effective means of publicising your group. With your permission, details of your group may also be included in lists of groups (eg. youth organisations, hobbies and interest clubs) covering the whole of Charnwood.

If you run a group or organisation this is an ideal opportunity to promote it in the Sileby area or just to ensure that our details about your group are correct and up-to-date. To ensure that your group is included, pick up a local information form from the library or contact Charlotte Bithell (librarian for Sileby Library) at Loughborough Library on (0509) 212985.

Jo Hopkinson & Charlotte Bithell, Loughborough Library.

WARTBURG

INSURANCE SERVICES

78 Swan St. Sileby Tel: 814264

HOUSE & CONTENTS LIFE & PENSIONS
BUSINESS MORTGAGES MOTOR

Quotations arranged to suit your own personal requirements

FULL AGENCY FACILITIES
HALIFAX BUILDING SOCIETY

Wool 'n' things

- Quality knitting yarns
- Haberdashery
- Specialist Embroidery Threads including: Marlitt, Madera and Danish Flower thread
- Patchwork and quilting supplies
- Cross stitch kits & fabric
- Books & cards

30 King Street, Sileby

Tel: Sileby 812585

Closed all day Wednesday

Derry's Nurseries

MAIN STREET, COSSINGTON. TEL: SILEBY 2815

- * Wide range of trees, shrubs, roses, heathers, alpines, perennials, conifers, rhododendrons, azaleas, camelias and climbing plants.
- * Peat, compost, fertilisers and all other garden accessories
- * OPEN 7 DAYS A WEEK - WELL WORTH A VISIT *

POLICE NEWS

Sileby is a village with a population of around 7,000 people and although many of you know which police station covers Sileby some of you may think, because of it's location that it is Syston.

The actual Police station that covers and has responsibility for the day to day policing of Sileby is Quorn Police Station which is a small station situated on Leicester Road, Quorn.

There are fifteen Police Constables that work from Quorn along with two Sergeants that between them police the following villages:-

Sileby, Seagrave, Cossington, Barrow, Burton, Walton, Wymeswold, Cotes, Hoton, Rothley, Mountsorrel, Quorn, Woodhouse Eaves, Old Woodhouse, Swithland and Ulverscroft.

Obviously, due to the differing sizes of the villages some require more police time and attention than others.

The local beat bobby for Sileby along with Cossington and Seagrave is myself PC Steve Rhodes with two other officers also having a specific responsibility for Sileby, PC Steve Morris and PC Tony Hewitt.

Loughborough Police Station is the divisional station that covers the smaller Police Stations including Quorn and anyone wishing to contact Quorn Officers should ring Loughborough (telephone number 231111) as Quorn does not have an external number. Loughborough also have traffic cars that patrol Sileby and the other villages, amongst their other duties.

Anyone wishing to contact me can either ring Loughborough Police station and leave a message or via your Neighbourhood Watch Scheme contact person or co-ordinator.

PC Steve Rhodes

● LETTERHEADINGS ● COMPLIMENT SLIPS ● BUSINESS CARDS ●

● PROGRAMMES ● NCR SETS ● BOOKLETS ●

● LEAFLETS ● FORMS ● MAILSHOTS ●

P R LITHO
(PRINTERS)

FOR ALL YOUR
PRINTING REQUIREMENTS
(Printers of "The Stockade")
● COMPETITIVE PRICES

We're only a phone call away

**TELEPHONE
ANDY or DOT**
on
(0533) 570244 or Fax (0533) 570244
20 Crawford House, West Avenue, Wigston, Leicester, LE8 2FB

● PRICE LISTS ● PADS ● COMMUNITY NEWSPAPERS ● CATALOGUES ●

SILEBY PARISH COUNCIL REPORT



INSTALLATION OF DOG WASTE BINS ON THE MEMORIAL PARK

At considerable cost to the Parish, three Dog Waste Bins have been installed on the Memorial Park. It is hoped that all responsible dog owners will use these bins and encourage others to do so. This facility has been provided due to public demand - PLEASE USE IT.



LIGHTING OF THE VILLAGE CHRISTMAS TREE

As this annual event has proved to be so successful the Parish Council decided this year that the trees will be lit for an extra week. The annual ceremony will take place this year on Friday 3rd December at 6.30pm on Martins Walk. Everyone is invited to join with the Chairman of the Parish council, Councillor T. Machin and Councillors for a short Carol service followed by coffee and mince pies in the Community Centre afterwards. Father Christmas will be present.

The Chairman's chosen charity for this year is 'Blood Count' Leukaemia, Bone Marrow and Allied Blood Disorders - Patient and Family Support. Your donations at the event would be much appreciated.

COME AND JOIN US ON THIS FESTIVE OCCASION.

SILEBY PET SUPPLIES

King Street, Sileby (next to Heaps)
Birds, Animals, Fish, Frozen Foods
Animal Foods, Treats, Cages etc.
Bird Seed, Nuts, Wild Bird Food.
Fishing Bait & Tackle available.
FREE LOCAL DELIVERY Tel. 812908



Your Old Cine Films

Transferred on to video.

No more setting up your projector and screen, as you can watch your cine film memories at the convenience of your home video. With titles and music added this makes an ideal gift.

Slides/photographs can also be transferred.

For free information package
Telephone: Sileby 813963

SCHOOL NEWS

Cossington Primary School P.F.A

On Friday 29th October the Parents and Friends Association of Cossington C. of E. Primary School held their first event of the current school year. Seven teams took part in a quiz evening, held in the main school building. The winning team being the Norfolk and Goode quartet who scored an impressive 66 points out of a possible total of 78 points.

On Saturday 6th November a Saturday morning tidy up and bulb planting session within the school grounds took place and further events for the autumn term are planned:

Saturday 27th November - Christmas Fayre (morning only).

Thursday 9th December - Early evening children's Disco.

Wednesday 15th December - Carol Singing in Cossington, assemble at the School at 6pm.

The Whittington Badger Sett - Five Year Celebrations.

On 13th September the Whittington Badger Sett (St John's Ambulance junior section) was 5 years old. To celebrate this we had a disco party with Sound City Disco providing the music. We had dancing competitions and games with prizes for the winners, but the thing the Badgers enjoyed most was the smoke machine - it was a bit like dancing in the fog and the badgers thought it was great fun. The 5th year birthday cake were made by the group's assistants, Sarah and Emily - and thorough enjoyed they were!

We have met 48 children in the 5 years, 7 of which are cadets and are still enjoying the St John's Ambulance.

On 25th September all the badgers of the county attended the Water Safety Day at Beaumanor Hall and Quorn Outdoor Pursuits Centre which included an hour or so of rowing on the river. Each Badger received a certificate at the end of the day. The competition for the best water safety poster, was judged by one of the canoeing instructors and guess who won out of the 200 Badgers - Sileby of course! We have now won the shield for two years in a row, so I'd just like to say well done to the Badgers.

RITA WAIN, Badger Leader

ADVERTISEMENTS

An advert this size will cost just £14 in the next edition of the STOCKADE, Sileby's own community magazine issued FREE OF CHARGE to every household in the village. Provide us with your own design and layout or simply tell us what you want and we'll set it out for you.

*Closing date is the 31st January for the
SPRING EDITION*

Contact : Liz Robinson 812871 or
Janis Bishop 814754 for further details.

Immaculate Classic Car

Available for Weddings and
Special Occasions.

Extremely competitive rates.

For further details ring Mr James
on Sileby 812169

Neil brings gold back to Sileby!

On Friday 20th August, Neil Howlett of Homefield Road joined 150 other competitors from the East Midlands to represent their area in the 1993 Special Olympic Games held in Sheffield.

Neil, who suffers from Downs Syndrome was taking part in the equestrian Team being entered for four events -

Dressage, Equitation, Stable Management and the Team Relay. He came home with four medals, for 6th, 7th and 8th place and a Gold Medal for the Team relay.

It was a fantastic week and a great experience for Neil. He and his parents were more than pleased with his results.



(Reproduced with the kind permission of Charnwood Photographic)

Pat Howlett

FIFTY YEARS ON, SILEBY RESIDENT RECEIVES MEDAL



In September this year our family were very proud to hear that on the Prime Minister's recommendation the President of Malta had awarded Dad, Bert Marston, 'The Malta George Cross Fiftieth Anniversary Medal' for his services during the war in the defence of Malta. Dad was given the option of collecting his medal from Malta's High Commissioner in London or of having it delivered by registered post; he chose the latter.


The medal will now take pride of place in his home along with his two other awards for wartime actions when he was 'mentioned in dispatches', once for his services during the evacuation at Dunkirk and once for his services on Motor Torpedo Boats in the Adriatic. The citation which was published in the Leicester Mercury in 1943 mentioned his 'courage, resource and devotion to duty in operations against the enemy'.



PAINTER & DECORATOR

D. Parker

62 SEAGRAVE ROAD
SILEBY



TEL: (0509) 814916

JANET KIRK

The White Swan

SWAN STREET, SILEBY, LEICESTERSHIRE.
FREE HOUSE

*Bar Snacks and Full A La Carte Menu
Lunchtimes & Evenings Tuesdays - Saturdays
Sunday Lunches and Family Room*

Bob & Theresa
SILEBY
814832



Credit Cards
Accepted

SILEBY COMMUNITY HEALTH PROJECT

Now that the project has it's own base, the possibilities for groups to set up are really beginning to snowball.

Several groups have started and are using the base regularly. Some of these, for example the Panic Attack Self Help Group, Sileby Lone Parents' Group, Sileby Childminders Support Group and the Volunteer Bureau have written their own reports for this issue of the Stockade.

There are also several other ventures that are being planned and these will have more publicity when dates and times have been decided.

We hope to open a Young People's Drop-In, A lunch Club and a Craft Afternoon, a Menopause Group, a Carers Information and Support Group (for people caring for disabled children, adults or elderly people), a Food Club and an Art and Craft Exhibition.

If any of these suggested activities or groups are of interest to you and you would like to know more about them please contact Caroline Harding on Sileby 815288 or call in at the 'Drop-in' and information centre on Tuesday or Friday mornings between 10am and 12pm, at the Community Centre House on High Street.

Please note that thanks to a very kind and able volunteer the base is now accessible for people in wheelchairs or scooters at the rear door.

Finally, if there is something bothering you or something you would like to see happening in Sileby that you would like to get involved with then please contact me and we can see if something can be done about it.

Caroline Harding

SANTA, SANTA, SANTA IS COMING SOON!!

Sileby Swimming Pool Committee is delighted to announce that they have once more persuaded Santa Claus to break off from his hectic Christmas schedule to visit Sileby sometime in the weeks before Christmas. He will be touring the streets in his illuminated sleigh and invites children young and old to come and say "hello".

Please make sure you make him welcome if you want him to call again on Christmas Eve!

The Committee would welcome any offers of help from the people of Sileby to ensure that Santa's stay in the village is a happy one. If you would like to spend an evening accompanying his sledge around the streets we should be pleased to hear from you. Usually Santa lets his helpers have a little ride aboard with him which can be great fun if you've never had the opportunity before.

Volunteers can leave their name and telephone number at either Wartburg Insurance Offices or Just Music, both on Swan Street.

WE LOOK FORWARD TO HEARING FROM YOU

John Laurance



PAWS FOR THOUGHT

My man has been keeping me in touch with some of the comment which has appeared in the Stockade and other local publications about the problem of dogs who are taken to the Memorial Park be their people for exercise and end up making a mess. It had me scratching my ear, this one, I don't mind telling you! First of all we're taught not to go in the house like you lot, then just as we're getting the hand of going outside we're told we cannot have a run on the park. Where can we go with out causing offence? Could we have our own special area perhaps? I've seen these at camping and caravan sites when I've been exercising the people and they seem to work pretty well. A linear walk along the brook might be a possibility, what do you think canines?

Jake

Editorial comment:

Please lets hear from you on this subject. The Parish Council have been inundated with complaints from villagers with regard to 'doggy problems' on the park and this has lead them to have dog waste bins erected on the Memorial Park, which will be regularly emptied. They have not banned dogs from the area but just ask that all responsible dog owners should use the facilities provided.

HOW MANY OF US GO THROUGH LIFE WITH OUR EYES WIDE OPEN BUT UNSEEING?

A few weeks ago I was standing on the corner of King Street, waiting for a gap in the never ending flow of traffic. I found myself glancing across the road at the working men's club. As my eyes travelled upwards, what to me has always seemed a non de script building was instantly transformed.

How had I managed for the twenty eight years that I have lived in Sileby never to have noticed this wonder before? I found myself wishing I could fly like a bird to get a better view of the beautiful eaves on the building. Who had created the decorative workmanship that sits like a tiara around the top of the building? Was it made locally? How long has the club stood there? These thoughts raced across my mind. Perhaps someone will write in and answer my questions.

Now when I walk up the High Street even on a dull wet day, I know that my spirit will lift as I gaze upwards at my discovery.

How many more things have I missed on my daily travels? I now look up as well as down, left and right just in case some other miracle might be about to unfold before my eyes.

Jean Taylor, Rainbows End

If the hypocrite person who stole first the lids, then the flower containers from my parent's grave at Sileby cemetery would contact me I would be pleased to give them something in return. As God said - Thou shall not steal.

Wilf Beadsmore

Dear Sileby People,

It gives me much pleasure to take this opportunity to thank you for the loyal support which you gave to me as your representative for Sileby on the Barrow-upon-Soar Rural District and the Charnwood Borough Councils. Perhaps I could tell you a little of what was achieved during those years:

First by the Sileby Parish Council we enlarged the cemetery - the Bishop of Leicester, the Rev Ronald Williams, came to dedicate the new part. (By the way years ago one half of the Cemetery area with one Chapel was for the Methodist people and the other half and Chapel was for the members of the Church of England).

The Parish Council also enlarged the Memorial Park to accommodate a new football pitch - we would have liked to have purchased the field next to it but Morris Jelson had bought the land previously; and the amount asked was £90,000 - an amount which we could not afford to pay.

During my Barrow Rural District days - up to 1973, members would visit the various sewerage works to inspect them to see how clean the water was after it had gone through all the filters (those in charge said it was fit to drink, but I did not see anyone ever sample it). Little worms and things were put in the filters to eat up the nastiness and just after the new sewerage plant was opened at Wanlip someone put in some detergent and it killed all these little living things. It followed that the works were out of order for a long time!

As Barrow R.D.C members we would also visit the dustbin men at work (now refuse collectors) to see if they had any complaints - they had bins to empty then, now of course they have sacks. One day a lady from Queniborough rang up the Sileby Depot in great anger and complained that the dustbin men had left the gate open and let her tortoise out! Mr Copson, the depot supervisor went over and found the tortoise in the next door garden - The men took a very dim view of it, to suggest that the tortoise had beaten them out of the gate!

The incinerator and chimney were built and Noel Gordon from 'Crossroads' came and opened it and what trouble we had with that chimney when the plastic was burned - the soot spoiled everyone's washing.

The Brickyard area, up Albion Road was a very unpopular place. Because of the warmth the crickets were everywhere in peoples houses - I have known people come to the Barrow R.D.C offices at Rothley with packets full of them, then the Council men would bring tins of powder to spread around the whole area.

Of course my Charnwood days came afterwards, from 1973. I was on the Planning Committee. This work is very important, the decisions made must be fair to everyone, whether it is for the situation of an estate, a single house or for alterations. If however a decision on an application appears to be a wrong one to some council members it can be brought back to full council where (if the Chairman of the Planning Committee agrees) it can be referred back to the Planning Committee and considered again. Even if the application is refused the applicant can always appeal.

Sileby people have always been generous and kind. If a person had a period of illness or had an accident and could not work, his work mates at the factory or the people where he lived would have a collection for him. Yes, Sileby is a good place to live with good solid people - friends.

It was because of the wonderful and loyal support that you gave to me from 1955 to 1991 as your representative for Sileby that Charnwood Borough Council was able to give me the highest honour that a Council can give - that of the title Honorary Alderman. Sileby Parish Council also presented me with a beautiful clock and also dedicated to me a rose garden by Martins Walk in the village.

I am extremely proud and grateful for the Parish Council's kindness and the regard which they held for me. Again, I thank you all so very much for your support over all these years.

With Best Wishes

GRACE BARBER



KEEPWARM WINDOWS

NEW PREMISES AT 34E ALBION ROAD, SILEBY Tel: 813552
COME AND VISIT OUR NEW SHOWROOM & FACTORY OPEN:

8am - 5pm, Sat. 9am - 1pm

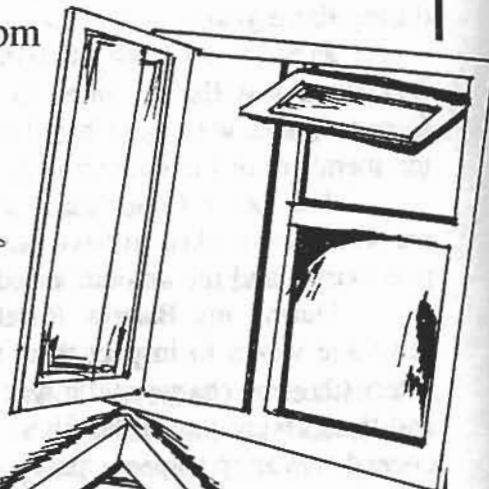
YOUR LOCAL FAMILY BUSINESS
MANUFACTURING PVCu WINDOWS, DOORS,
PORCHES, CONSERVATORIES, AND THE NEW
"THERMOL" GREENHOUSE

FREE, NO OBLIGATION QUOTATIONS

- * 10 YEARS FULL GUARANTEE
- * HIGH SECURITY
- * FITTED BY OUR OWN SKILLED CRAFTSMEN
- * ALWAYS SPECIAL PRICES

STOCKISTS OF PVC GUTTERING IN FOUR
COLOURS, SWISH PVC CELUKA FACIAS,
SOFFITS, CLADDING, ETC FOR D.I.Y. OR
FITTING SERVICE AVAILABLE

ELIMINATE PAINTING FOREVER!



Volunteer Bureau



Volunteer Bureau, Charnwood Community Council,
John Storer House, Wards End, Loughborough, Leicestershire LE11 3HA
Tel: Loughborough (0509) 230131

The Volunteer open morning continues to operate each 2nd Tuesday in the month from 10am to 12.30pm at Sileby's Community Centre House. A steady flow of referrals and volunteers have been coming in during Autumn and most of these have been successfully matched. The following are examples of the sort of work that volunteers may be engaged in within Sileby:

- * Befriending the elderly or housebound *
- * Work with young children or playgroups *
- * Gardening and decorating *
- * One-off jobs such as driving or sharing craft skills *
- * Self help groups *

Please continue to support the scheme by volunteering your services or letting us know of any particular need or project within Sileby.

Currently, Caroline Harding the Community Health Project leader is looking for volunteers to help run a lunch club and/or craft afternoon at the Community Centre House.

Ros Barney, Volunteer Bureau Organiser

WHAT'S HAPPENING IN SILEBY DURING THE WINTER

If you would like anything included on the diary page for the next edition of the Stockade please let us know before 31st January (see page 1 for dropping off points). The Spring Edition will be delivered at the beginning of March.

SATURDAY 27TH NOVEMBER Cossington Primary School P.F.A are holding a Christmas Fayre in the morning at the school.

FRIDAY 3RD DECEMBER Sileby Parish Council invite you to join them at Martins walk for the annual ceremony of lighting the village christmas tree and afterwards in the Community Centre for coffee and mince pies.

SATURDAY 4TH DECEMBER Sileby Methodist Junior Church's 'Christmas Cracker', 7pm at the Methodist Chapel Hall, Swan Street with the Loughborough Endowed Schools Swing Band.

THURSDAY 9TH DECEMBER The Stockade Committee have arranged for The Royal Theatre Touring Company to visit Sileby Community Centre where they will perform 'Father Brown and the Royal Theatre Mystery'. Come along with all the family for a good Christmas show. Tickets available from Stockade Committee members or Wrights' Butchers, High Street.

Cossington Primary School P.F.A have arranged an early evening Children's Disco at the School.

FRIDAY 10TH DECEMBER Sileby Townswomen's Guild at the Community Centre, 7.30pm. Today is our Christmas Party and any visitor or new member will be made most welcome.

TUESDAY 14TH DECEMBER Coffee and Mincepies Morning. Volunteers old and new are invited to this open morning 10.30am to 12.30pm at Sileby Community Centre House. Talk with Ros Barney or Caroline Harding.

WEDNESDAY 15TH DECEMBER Cossington Primary School P.F.A are arranging Carol singing in Cossington - Assemble at the School at 6pm.

TUESDAY 11TH JANUARY Volunteer's open morning 10am to 12.30pm at Sileby Community Centre House. Talk with Ros Barney or Caroline Harding.

FRIDAY 14TH JANUARY Sileby Townswomen's Guild at the Community Centre, 7.30pm. The speaker tonight will be Mr Allen from the NSPCC. All ladies welcome.

SOMETIME IN FEBRUARY (Dates to be finalised) Sileby Pantomime group will be performing The Sleeping Beauty. The group are in the midst of rehearsals at the moment, and they ask that you look out for posters around the village for the exact dates for the performances.

FRIDAY 11th FEBRUARY Sileby Townswomen's Guild at the Community Centre, 7.30pm. Mrs Sue Hardy will be talking on wedding flowers through the ages. All ladies welcome.

We were really pleased to receive some information regarding Laura Jones, who was a composer who lived in Sileby. We included two of her compositions in the 10th edition of the Stockade and asked if anyone could throw any light on her. Thanks to Murial Jones for letting us know about Laura and to Masie Wright who has written this most interesting article about her life.

WHO WAS LAURA JONES?

Laura was born in 1866, the third child of William and Mary Mear of Burton-on-Trent. Her father was a banker and in their younger days, Laura and her three brothers lived in a middle-class home complete with household servants. Then tragedy struck, for William died in 1873 at the age of 45 and Mary was left with four young children, the oldest thirteen and the youngest four. William left property and investments which enabled Mary to carry on much as before, until more bad luck followed. Mary herself died two years later leaving the young children orphans. Laura was only nine. Guardians and trusts were in place to help with the children's upbringing and Laura was sent to a boarding school in Leicester. She was still there in 1881 at the age of fifteen. Family hear-say is that she was there until she married in 1884 and she only married to get out of school but there is no proof as yet of this. She was married in Wirkworth, Derbyshire to my Grandfather William Henry Jones. William Henry had been an employee in Laura's brothers drapers shop in Burton and the family were not too pleased with the marriage, saying Laura could have done much better. However, Laura was eighteen and under the terms of her parents' wills came into her inheritance.

The young married couple started farming near Welshpool on the banks of the River Severn, just over the borders in Wales. Three children, Horace, Olive and Gwen were born and everything seemed well. Laura would go to Oswestry market on Market Day with a maid to carry her purchases. Then just as the twentieth century began, fate took a hand again. Overnight there was torrential rain, the Severn burst it's banks, flooded all their fields and drowned all their stock. They lost everything and there was no insurance to fall back on. They were virtually penniless and for some reason packed such things as they could rescue and came to the Midlands to Thrussington. I can only think that they were offered a cottage by one of Laura's school friends. My dad, Maurice was born there in 1902 and William Henry's occupation is given on the Birth Certificate as Watchmaker. Where he gained his experience I don't know.

My Uncle Bert was born after the move to Sileby in 1906. He was born in Brook Street and William Henry continued his watchmaking. Then a move to Cossington Road where Doctor Grey as a young GP had a surgery in their front room. In those days a GP would do minor surgery and my Aunt Gwen would often be employed as a 'Tonsil-catcher', holding the basin for Dr Grey.

Grandma had always written poetry - she was very gifted that way and by the time of the Great War her family were growing up and leaving home. She saw her eldest son, Horace go off to war with the Leicestershire Regiment to fight in the trenches of Flanders. Young men were killed, gassed or horribly maimed. Young women were left widows trying to cope with young families. She was overcome by what she saw about her and it came to the surface in her moving rhymes. The words just came, born of the emotion she felt. Other people read her work and told it was worthy of publication. She was indebted to the Red Cross for their efforts to trace her nephew, her brother's son, who was missing in France. It was decided to group several of her poems together in a booklet, 'A Selection of War-Time Rhymes' and these were sold in aid of the Red Cross as well as single poems printed on cards. Her poetry was full of compassion for the suffering of the English people but full, also of the patriotism drummed up by Lord Kitchener. Remember the pointing finger and 'YOUR COUNTRY NEEDS YOU'?

Older people in the village will remember Laura as a quiet, dignified lady who lived on Cossington Road until she was eighty. She lived with my Uncle Bert and Aunt Flo for many years. Of her descendants, my dad Maurice kept a watchmakers and jewellery shop in King Street which after his death my mother, Gladys, kept as a General store. My Uncle Bert worked in the shoe

industry as a clicker. Trevor, Ken, Gordon and families live in Sileby as does my sister Gwen Stevens (nee Jones). Mervyn lives in Immingham; sadly Rod died last year. I live in Leicester but the pull of Sileby is still very, very strong.

Masie Wright (nee Jones)

SILEBY METHODIST CHURCH LADIES CIRCLE

Thank-you for giving us space in the Stockade to express our sincere thanks to everyone who supported our annual Flower Festival in June. You helped us to spread the news and once again it was very successful. Our faithful friends helped us in lots of ways: flower arranging, growing plants, making cakes etc., and our members worked very hard on stalls serving meals, washing-up and cleaning afterwards. As a result of all this effort we were able to give a good donation to our Church.

We had good services on Sunday and the finale on Monday night was well attended. Charity cheques were presented from money raised by our members during the year and we were pleased to welcome the Mayor and Mayoress of Charnwood who were presented with a cheque for the Mayor's charity, the Rainbow Appeal.

It is very gratifying to know that after many years, and all of us getting older, we are still able to carry on this event and get such good support from friends far and near.

We would be pleased to welcome any lady on Monday nights at 7.30pm in the Swan Street School Rooms. We have a varied programme which starts on the first Monday in September until the end of June (except for Bank Holidays). We have speakers, fun nights, outings etc and there is no age limit or joining fee. We just pay 25p each week and for that you get a good night out with food.

Dorothy Harrison, President.

CASH


for all old and interesting items

IMMEDIATE SETTLEMENT
Top prices paid for full house clearance
Settlement within one hour!!

MR. BROOKER .. 813737
MR. STRATTON .. 816702

'REFLEXOLOGY'

A natural way to better health by massaging the reflexes in the feet.



Price £5 per session
Tel: Carole on Sileby 812045

LIZ COLLINS

SOFT FURNISHINGS

Your fabric - My machine
Together we can make it!

☺ ☺ ☺ ☺ ☺ ☺ ☺ ☺

All types of work undertaken
For details ☎ Quorn 414402

SILEBY LONE PARENTS' GROUP

Hi, we have started a group in the village for lone parents. We invite anyone who is a lone parent, Mums or Dads and whatever the age of their children to come along and participate. We would welcome your views and ideas for whatever you would like from such a group. Don't stay at home and worry alone, come along and get help and support or just conversation from others in the same position.

We meet every Thursday from 1pm to 3pm in the Community Centre House and make a charge of 30p to cover refreshments. Creche available for those whose children are under 5 years.

CALLING ALL CHILDMINDERS

There are 25 Childminders currently offering childcare in the village and this number is increasing quite steadily. A childminders' Support Group has been set up in the village. The group meets to discuss a range of topics designed to help with information and ideas. At the last meeting we discussed Christmas Parties, days out, picnics and the possibility of a float in next year's Gala.

A vacancy list has been set up and is now fully operational and working well, so if you have a vacancy please let me know. Equally, if you have filled your vacant place please let me know so that the list is kept up to date. The list can only work with your co-operation on this. If you have a problem or query regarding Childminding do not hesitate to call Karen Morley on Sileby 814850.

PANIC ATTACKS, ANXIETY, AGORAPHOBIA, PHOBICS etc

In the Spring edition of the Stockade the possibility of starting a self help group for sufferers of these problems was mentioned. A group has now been set up and meetings are held once every two weeks on a Monday from 2 to 3pm at Sileby's Community Centre House in the High Street. Are you a sufferer? Can we help? Can you help if you have been a sufferer? Why not come along, have a friendly chat and a cuppa with others who understand what you are experiencing. Perhaps you'll be able to gain more understanding to enable you to take positive steps to recovery by self help.

Local contacts are available if you prefer to phone or would like more information: -

June - 813129 }

Pam - 413802 } or your can contact Caroline Harding at the Community Centre House

Carol - 814467 }

TABLE TENNIS

NOW AVAILABLE

AT THE COMMUNITY CENTRE

FUN FOR ALL THE FAMILY

FOR JUST £3.50 PER HOUR

PRICE INCLUDES HIRE OF TABLE TENNIS BATS AND BALLS

ALL BOOKINGS PLEASE THROUGH KAY MACHIN ON SILEBY 814215

PLAYGROUP OPENS NEW ROOM

Peter Pan Play group (held at Sileby Community Centre) has existed in Sileby for the past 18 years. In 1989 Janet Kirk and Judith Jelley took over as playgroup leaders.

We aim to provide the under fives with a warm, welcoming, caring environment where they can learn through play and develop their educational and social pre-school skills.

In October we opened our primary room, where we provide a gentle introduction to playgroup routine, taking children from two and half years old instead of 3 years as we have previously done. The children may stay in this room for one or two terms depending on their personal development and on the vacancies in the main room. Children in the Primary room have all the play and learning opportunities enjoyed by the other children but with the added advantage of starting in a smaller room, with a smaller group of children, hence a better child-adult ratio and with a less formal structured routine. They have a slightly shorter morning than the main room, the hours are 9.30am to 11am. The combination of these changes will, we hope make the settling in process for the children an easier and less stressful one. In the Primary room we have 10 children and two adults.

Our policy is as always when new children join the playgroup to encourage parents to stay for as long as they feel necessary to ensure that their child is completely settled.

JANET KIRK

THE CUP - The day Sileby Vikings Baseball team did the impossible.

I was down at the park early that morning to mark out the diamond (or pitch, as others might call it), get the netting erected and put down the lines and bases. Everything that had to be inspected by the umpire was done. Lunch came and went then it was back down the park to get the kit's all laid out - bats, balls gloves and all the protective gear that most people don't see.

The lads were all early and raring to go. We had no proper uniforms at this time, just some matching tee shirts I had borrowed - I thought to myself, at least they'll all look the part. Then came the opposing side. They all changed in the Football Pavilion (kindly loaned to us for the day) then they exercised and looked most impressive.

My mind wondered and I kept thinking what we could do to win - to win was uppermost in my thoughts because during the season this side had thrashed us twice. I would love to go into all the details, but unfortunately most people don't know the rules.

So we moved on to the last leg of the game - they had reached their final score. We needed 3 runs to win - IMPOSSIBLE - then out of the blue we found ourselves with all the bases loaded (this means we have a runner on every corner). The batter is in, he swings, misses and everybody sighs. The pitcher throws a no ball, he pitches again and the batter swings - he hits the ball and it's on its way and away and away.....All the runners come running in with a home run. So the impossible happened and the Sileby Vikings won the game!

Gus Green, Coach for Sileby Vikings

Gus is still looking for a sponsor, or sponsors for the teams, please contact him on 816198 if you feel you can help.

If you'd like to join either the junior or senior teams come along to Highgate School, Heathcote Drive on Saturdays between 2 and 4pm.



PUT CHRIST BACK INTO CHRISTMAS

Come and enjoy the Christmas.
Services at your local church.
A warm welcome awaits you.



EVANGELICAL BAPTIST CHURCH - *Cossington Road*

Sunday 19th December 10.30am CHRISTMAS FAMILY SERVICE
6.15pm TRADITIONAL CAROL SERVICE
Christmas Day 10.30am CHRISTMAS DAY SERVICE

COSSINGTON ALL SAINTS' CHURCH

Sunday 12th December 6.30pm CAROL SERVICE
Christmas Eve 11.30pm MIDNIGHT COMMUNION
Christmas Day 10.30am FAMILY SERVICE

ST. GREGORY'S CATHOLIC CHURCH

Sunday 19th December 3.00pm CAROL CONCERT
Christmas Eve 6.30pm FIRST MASS OF CHRISTMAS
11.00pm SECOND MASS OF CHRISTMAS
Christmas Day 9.30am THIRD MASS OF CHRISTMAS
Sunday 26th December 9.30am HOLY FAMILY MASS

METHODIST CHURCH

Sunday 19th December 6.00pm CAROL SERVICE
Christmas Day 11.00am FAMILY SERVICE

SEAGRAVE ALL SAINTS' CHURCH

Sunday 5th December 10.30am TOY SERVICE
Sunday 19th December 6.30pm CAROL SERVICE
Christmas Day 9.30am FAMILY COMMUNION

SILEBY ST. MARY'S CHURCH

Sunday 12th December 2.00pm OLD FOLKS AND HOUSEBOUND PEOPLE'S CHRISTMAS
TEA PARTY
Sunday 19th December 10.30am ALL AGE NATIVITY
Christmas Eve 6.30pm CAROLS BY CANDLELIGHT
11.30pm MIDNIGHT COMMUNION
Christmas Day 9.00am CHRISTMAS HOLY COMMUNION
10.30am FAMILY HOUR
Friday 31st December 11.30pm NEW YEAR VIGIL



PLEASE, PLEASE, PLEASE if you belong to a group or club in the village spend a few minutes filling in the form on the page opposite so we can have contact names for ourselves and we can compile a directory for the village. There are plenty of activities going on out there for everyone - If you'd like more members or would like to let everyone know that there is life in Sibley - give us a few details.

We hope the following information is helpful to you. If your group or club isn't included it's because we've not heard from you!

2nd SILEBY RAINBOW GUIDES. CONTACT:- Julie Caddock or Linda Jones (Sibley 812385). For 5 to 7 year old girls before they go to brownies. There is a waiting list.

SILEBY EVERGREEN CLUB. CONTACT:- Mrs Vera Walters (Sibley 812195). For retired residents of the village. Meetings are on Wednesday and Friday afternoons at the Village Institute.

HOMESTART. CONTACT:- Sue Carruthers on 842282. For families with children under 5 years. Meetings are held at Sibley Community Centre from 1 to 3pm every Tuesday. There is a charge of 40p per family.

SQUEELS ON WHEELS. CONTACT:- Jayne Beck (814339) For mums with pre-playschool children. Meetings are on Thursdays from 9.30 to 11.30am at the Pochin Hall, Mountsorrel Lane. There is a charge of 50p per family, which includes refreshments.

SILEBY COMMUNITY PROJECT. CONTACT:- Caroline Harding (816403) based at the Community Centre House. For the benefit of anyone who lives and works in Sibley. Drop in facilities, information, support networks, self help groups, volunteers. If you need help or can give help, call Caroline.

SILEBY VIKINGS BASEBALL TEAM. CONTACT:- Tony Green (816198) For anyone from 11 years of age for the junior team and any age for the senior teams. Matches take place during the summer months.

1st SILEBY BROWNIES. CONTACT:- Elaine Taylor (814874). For girls aged from 7 years. There is a waiting list to join.

THE WHITTINGTON BADGER SETT. CONTACT:- Rita Wain (812344) For children from 6 to 10 years. This is the junior section of the St John's Ambulance. There is a waiting list.

SILEBY BEAVER SCOUTS. CONTACT:- Mrs J. Holloway (813604) or Mrs S. Healy (814446) For boys from 6 to 8 years. There is a waiting list.

SILEBY PHOTOGRAPHIC SOCIETY. CONTACT:- Lionel Blower (816287) Everyone is welcome to come along to the meetings at the Village Institute, Manor Drive held most Monday evenings (7.30 for 8pm).

SILEBY GOSHIN JUI JITSU CLUB. CONTACT:- Alec Preston Everyone is welcome to join this club which meets at Sibley Community Centre every Tuesday night. Children's classes are from 6.45pm to 7.45pm with adults meeting afterwards until 9pm. Just turn up for further information.

ST MARY'S PARISH CHURCH 'CHURCHMEN IN THE MIDLANDS'. CONTACT:- Mr F BALDWIN (816213). Meetings are held on the first Friday of each month in the Pochin Hall at 7.30pm. A variety of interesting speakers come to the meetings, so why not come along and enjoy the company and fellowship of these meetings. whether you attend church or otherwise.

SILEBY METHODIST JUNIOR CHURCH. CONTACT:- Marilyn Nelson, superintendent (813726) or Karen Ette, secretary (812805). For young people from 0 -18 (or older). Fun, activities and learning about Jesus love and bible study. Every Sunday 10.45am - 11.45am. Creche also available.

SILEBY TOWNSWOMEN'S GUILD. CONTACT:- Mrs J Morris (812461 or Mrs S Dexter (812973). Monthly meetings are held on the 2nd Friday of each month at Sileby Community Centre at 7.30pm. Speakers come to talk on all subjects, outings are arranged to the theatre, rambles, skittles, factory visits etc and all ladies between 16 and 99 are most welcome.

SILEBY SCOUT GROUP. CONTACT:- Mrs S.J Wells (812761) is the Group Scout Leader. All meetings take place at the Scout Headquarters on King Street.

Beaver Scouts. CONTACT:- Mrs J. Holloway (813604). This group for 6 to 8 year olds meets on Fridays from 6.15 to 7.15pm.

Cub Scouts. For 8 to 10 and half year olds.

Quebec Pack CONTACT:- Mrs C. Boyles (412019). This group meets on Wednesdays from 6.30 to 8pm.

Brookside Pack CONTACT:- Mr M. Kitchen (812699). This group meets on Thursdays from 6.30 to 8pm.

Scouts. For 10 and half to 15 and half year olds (16 years)

Hart Troop CONTACT:- Mrs C. Freeman (812031). This group meets on Thursdays from 7.45 to 9.45pm.

Rogers Troop CONTACT:- Mr W. Travers (813883). This group meets on Tuesdays from 7.30 to 9.30pm.

Venture Scouts. CONTACT:- Mr D. Philips (Leic 374549). This group for those over 15 and half meet on Tuesdays from 7.30 to 9.30pm.

SILEBY TENNIS CLUB. CONTACT:- Dave Thompson (812993). The club welcomes members for summer tennis. You can play social tennis, team tennis and join in social events. The club is open to members, aged 11 upwards from Sileby and Surrounding villages (mainly).

LETS HEAR FROM A FEW GROUPS WHO WOULD LIKE MORE MEMBERS - PLEASE JUST FILL IN THE FROM BELOW

STOCKADE DIRECTORY

NAME OF ORGANISATION: _____

CONTACT NAME: _____

PHONE NUMBER: _____

BRIEF DESCRIPTION OF ACTIVITIES OF ORGANISATION INCL. WHO IT IS AIMED AT:

CHRISTMAS CAKE RECIPE

We would like to thank Shirley Adams for sending us her Christmas Cake recipe.

Ingredients: 10oz Self Raising Flour
½ teaspoon Mixed Spice
3oz Ground Almonds
½lb Butter
8oz Caster Sugar
4 Eggs
½ pint Guinness
2lb Mixed Fruit
2oz Chopped Glace Cherries

J.H.MORRIS
5 Brook Street, Sileby Tel. 812492
Footware & Clothing for all the
family, Household Linens
Baby Care Specialist
Shoe Repairs Taken
Established in 1920

Method: Mix together the first three ingredients in a bowl and cream together the butter and caster sugar in another bowl. Mix the eggs with the Guinness and put the chopped Glace Cherries in with the mixed fruit.

Alternate a little at a time of the flour mixture and egg mixture into the creamed butter and sugar. Mix well. Stir in the fruit then transfer to a well greased and lined 8 inch cake tin. Bake for 3½ hours at gas Mk3, 325°F or 160°C.

You can marzipan and ice in the usual way.

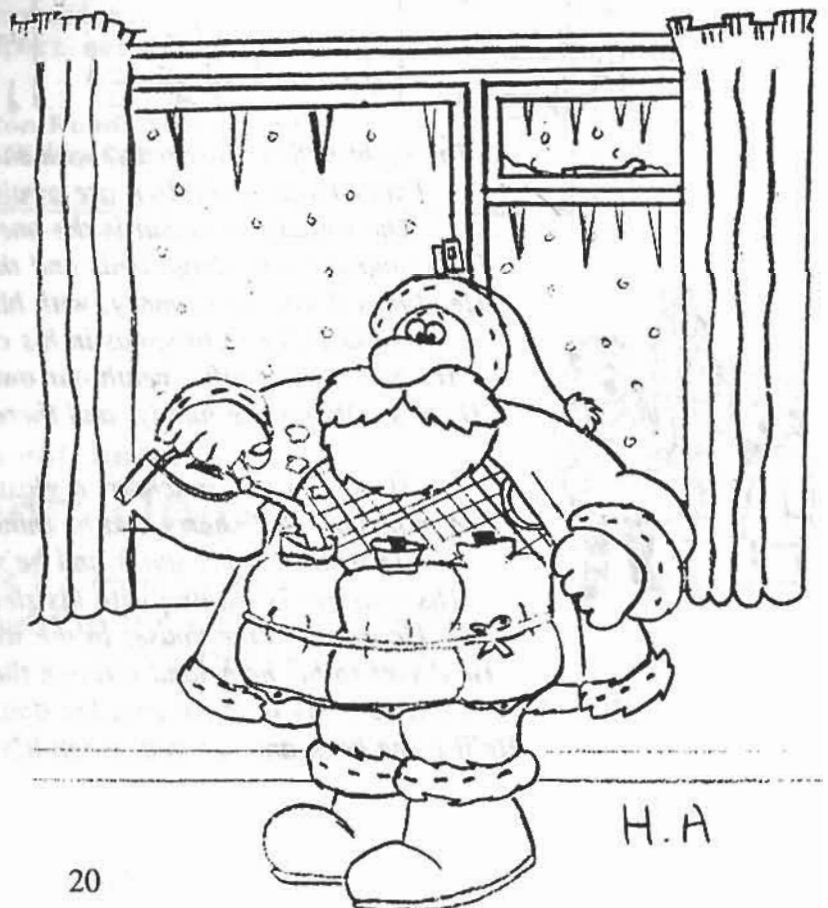
THE OLD SCHOOL RESTAURANT Tel. 813941
Tues - Fri : *Special set price 3 Course lunch £5.95*
Sundays : *Traditional 3 Course lunch + coffee £ 9.95*
Tues - Sat Evenings : *Full a la carte menu and
traditional homemade English & French Specials*

Sileby Cottage

鐘記



CHINESE AND ENGLISH
HOT MEALS TO TAKE AWAY
5 KING STREET, SILEBY,
LEICESTER Tel. (0509) 812525
Orders by Telephone are Welcome



H.A

"THE NIGHT BEFORE CHRISTMAS" - (Music by Fig Smith)

MOZARTO

5.

Handwritten musical score for "The Night Before Christmas" in 3/4 time. The score consists of five systems of two staves each (treble and bass clef). The first system is marked "MOZARTO". The second system is divided into "1ST TIME" and "2ND TIME" sections. The third system has a key signature change to one sharp (F#) in the bass clef. The fourth system continues in the new key. The fifth system ends with a "FIN" marking and a "pls" annotation.

*The night before Christmas, with snow on the ground,
Excited young children are awaiting the sound.
The sound they await is the one we all know,
The sound of those sleigh-bells and the old "Ho-Ho-Ho".
He climbs down the chimney, with his sack on his back,
It's old Father Christmas in his cherry red mac,
He puts all our gifts 'neath our own christmas tree,
There's gifts for the family, and there's one just for me.*

*He sits in the armchair, a glass in his hand,
A mince pie and sherry and he thinks it's just grand.
He's finished his snack and he's ready to go,
His reindeer is waiting with his sleigh in the snow.
He waves to the houses in the street far below,
He drives to his homeland through the sky and the snow,
He's sorry to leave you, but don't have a fear,
He'll come back and see you, when it's Christmas next year.*

(Words by Amanda Smith)



I was very interested when I read Maggie Norton's letter in the last Stockade. I well remember Mrs Bradshaw as I lived as a boy next door to her in our double fronted cottage. This cottage had been in our family for many generations, opposite where the 'Cons' Club now stands. The Club had not been built then and the area was all open fields. The field opposite was owned by Alf Smith, who had his farm in Little Church Lane. But sadly, our cottage was demolished at the same time as the row of terraced houses where once lived Mrs Bradshaw. Our old cottage was a 'Cruck Cottage'. All were demolished for a car park for Melody Mills in the 1960's. I can also inform you about Mrs Laura Jones and her poems. She wrote quite a lot of them and they sold for 1d (an old penny) in aid of the Red Cross funds during the First World War. She lived on Cossington Road at about 131, opposite where Billingham Lodge now stands (open fields at the time Mrs Jones lived there). My mother bought many of these cards and I was always interested in poetry (as you may well know!).

Laura Jones' husband, Bill, was the local clock and watch repairer.

I well remember the poem that Laura wrote about the Zeppelin raid on Loughborough at that time. I was 12 years old and we saw the 'Zepp' fly over Sileby in the dark, as it passed the stars. It was like a long cigar in the sky and many people were killed by it's bombs. My wife lived in Loughborough as a child and she often used to recall the 'zepp' raid.

Bert Underwood, Skegness.

Bert would like to wish everyone in Sileby a Merry Christmas and Happy New Year.

The Redfern Kirton Partnership

Building Design Consultants

Plans drawn for your extension,
alteration or new home.
Free advice and quotation.
Quick, economic and expert service.

**5 Brookbridge Court, Melton Road, Syston.
Tel: Leicester 600602 or Sileby 812149.**

Have you heard of a Credit Union

What is a Credit Union?

Could it be of benefit to the local community?

What is the function of a Credit Union?

**Interested? Information about a Credit Union is available in a leaflet
at Sileby Library**

QUIZ RESULTS FROM ISSUE 10

Thanks to all of you who entered our prize quiz in the last issue - a much improved response to the two replies from issue 9! We were very grateful to Marjorie Turner for supplying the questions and checking the replies.

The winners who either receive £5 or have decided to donate their winnings to a worthy cause were:-

ERIC WILLETT, PRYOR ROAD (scored 34 out of 36)
JOAN PORTER (scored 34 out of 36)
MR E. GREEN, BARNARDS DRIVE (scored 33½ out of 36)

The answers were:-

1. 36 Inches in a Yard
2. 4 Rings on a Cooker (or Hob)
3. 5 Vowels in the Alphabet
4. Cyclops had 1 Eye
5. 2 Primary Schools in Sibleby
6. 8 Bits in a Byte
7. 27 Books in the New Testament
8. 2 Blanks in Scrabble
9. 4 Suits in a Deck of Cards
10. 10 Events in the Decathlon
11. The Walton Sextuplets are 6 Girls
12. Cats have Nine Lives
13. 3 Books in a Trilogy
14. 12 Months in a Year
15. Snow White and the 7 Dwarfs
16. 15 Men on a Dead Mans Chest
17. 4 Channels on Television
18. 3 Pins on a Plug
19. Jacob had 12 Sons (1 was Joseph)
20. 7 Deadly Sins
21. 6 Counties in Northern Ireland
22. 10 Green Bottles Hanging on the Wall
23. 5 Oceans in the World
24. 147 is the Maximum Break in Snooker
25. 21 Shillings in a Guinea
26. 50 Metres in an Olympic Sized Swimming Pool
27. The 10 Commandments
28. Bigamists have 2 Wives or Husbands
29. 88 is Two Fat Ladies in Bingo
30. 454 Grams in a Pound
31. 40 for Double Top
32. 24 Hours at Le Mans
33. 200 Pounds for Passing Go in Monopoly
34. 3 Legged Race
35. 4 Horsemen of the Apocalypse
36. 10 Downing Street

HYPNOTHERAPIST/COUNSELLOR ANN MOONEY M.I.H.A.

HYPNOSIS Can help you to lose weight, stop smoking, build confidence, cope with stress, phobias etc.
COUNSELLING Private and confidential counselling service.

FULLY QUALIFIED THERAPIST
Phone: Sibleby 816397

SILEBY GARAGE

COSSINGTON ROAD
Tel. 812269

CAR & VAN SERVICING
M.O.T.
BODYWORK
ACCIDENT REPAIRS

**TYRES & BATTERIES
AT COMPETITIVE PRICES**

PETROL ATTENDANT SERVICE

ROBERT BANCROFT

HIGH CLASS BUTCHERS
26 KING ST., SILEBY, LEICS.
TEL: (0509) 812397

PURVEYOR OF FINE QUALITY FOODS.
HOME PRODUCED, BACON, HAMS,
HASLETS, FAGGOTS AND SAUSAGES.
DEEP FREEZE SPECIALIST
FREE DELIVERY

Marjorie has sent another teaser for you; again send or hand your answers into Wright's Butchers, High Street by the end of December. The first three highest scores will each win £5.

ANAGRAMS OF TOWNS AND CITIES

1. NIGEL
2. CAMBER FOIL
3. HUNGER BID
4. LENT WOMB CAP
5. SAD FIR HUNG
6. SIR BOLT
7. I'II SCARE
8. TREE SLICE
9. OFF MAT
10. LOCK BOPAL
11. WHY BATTERYYS
12. TWO MILL FAIR
13. RAY LUBISS
14. ROVED
15. MAN ON TIGHT
16. NIGHT ASS
17. CAGED BRIM
18. WE OPEN NUTTY LANCES
19. FROST FAD
20. SNOWDIN
21. THEM CRANES
22. CELT ROGUES
23. KEN'S SEGS
24. WRY BRUSHES
25. CLEAN RATS
26. CHEERS, CLOT!
27. LOGS WAG
28. TEE REX
29. HUNT DOES
30. LOUNT
31. RUM HOT POTS
32. DRINKERS TIMED
33. HOLLER TROT, NAN
34. POLYTHRIC
35. DULL DONNA
36. GRABS HER FUR



THE ROYAL THEATRE
TOURING COMPANY

Present

FATHER BROWN and the
ROYAL THEATRE
MYSTERY

Thursday 9th December
Sileby Community Centre
7.30pm

Tickets available from:
Wright's butchers (High Street, Sileby)
Tom Mugridge (Sileby 813142)
Liz Robinson (Sileby 812871)
Janis Bishop (Sileby 814754)

WRIGHT'S

the Butchers

6 HIGH STREET, SILEBY

FREE DELIVERY

Sileby 812421

I enjoyed Maggie's childhood recollections in the last edition of the Stockade.

I was born in a two up and two down at the Patchwork; what an odd name to call a row of houses that no longer exists. There was no gas or electricity just a coal fire hob and oven with a copper to do the washing in the corner.

The stone floor was covered with a large peg rug Dad had made. The pump was at the bottom of the yard. Times were hard and after 4 years of war, jobs were hard to find.

My dad's mother came from Leicester with sisters Kitty, Margo, Winnie; Thurser had died at two years old. Dr Gray, a wonderful Scotsman brought my sister Vera into the world, two or three years later I was born, then my brother George, then Earnest, then Edith. I remember another baby sister dying. People had large families in those days. We all lived in the small cottage until I was eight years old then we were given a council house. Dad worked hard, he had a big garden and grew potatoes, greens, onions, celery, carrots and kept fowls. He came from Leicester after serving four years in the trenches in France during the war. He couldn't find work. Grandmother, my mother's mother, got them the cottage at Patchwork. Dad got the only job he could find, that was being the village dustman and at night emptied toilet pans. He had to lift heavy galvanised dustbins full of ash and jam jars, all kinds of rubbish and they had to carry them on their shoulders and chuck them into an empty horse drawn cart. They had to empty the rubbish into the old brickyard up Albion Road and Mucky Lane which is now covered in grass and trees facing the brook on Highgate Road. Then at night they had a horse drawn cart to collect toilet pans, empty them then clean and disinfect the empty pans all for £2.50 a week. Although he worked hard, with a big family we were poor. We were looked down on though my dad was a hard working man. We had some school children call us names and shout S**t pan divers after us. I used to run home and cry and beg my dad not to do the job, but my sister Winnie had the best answer when they called her. She turned and told them if their dad didn't do it, my dad wouldn't have to empty it! What a good answer from my sister. Today's dustmen pick up plastic bags, dump them into a huge lorry that crushes them. How times have changed.

They say Patchwork was given that name as they used to be cattle sheds that were converted into houses. What memories I have of childhood, I loved to play for hours down by the brook, it was clean then. It's a disgrace today. We old ones say Sileby is a dying village. We had so much but it's all gone. Why? Who's fault? What can we do about it? It's our village we all live here. It's become the forgotten village, we seem to be going backwards not progressing. Other villages keep being improved - not Sileby. Why?

Mrs V. Baker



SANCARS GARAGE SERVICES

For all your Mechanical Requirements call:

18/20 COSSINGTON ROAD
SILEBY, LEICESTER, LE12 7RS

Tel No: 0509 815872
Mobile: 0850 343381

Acorn
JOINERY

2a Albion Road
Sileby Tel: 816235

Joinery Manufacturers
Doors ● Windows ● Stairs etc
Hardwood or Softwood
Timber & Plywood for sale

AN EVENING WALK

*We set out in the evening
To walk the country lane
From Sileby up to Seagrave
With ne'er a sign of rain
Blue skies above and bright sunshine
To make our hearts feel light
The flowers in the garden
What a lovely sight
The colours of the rainbow
Were there for all to see
Blues and pinks and purple
Yellow and orange too
And then in all it's majesty
The greenness of a tree
The berries on the hedgerow
Are red, so bright and gay
They're enough to tell us
Autumn is on it's way
Disturbed by the noise the combine makes
A rabbit quickly stirs
Dashing to find a safer place
I hope he gets there first
Now as we turn, retrace our steps
The sun is slowly sinking
Out there, out in the west
The sky is bright with red and gold
A masterpiece of nature
A pleasure to behold
The fullness of the harvest moon
Lights our way back home
Stars all twinkling in the sky
Seemingly they say
Keep going we will guide you
No matter where you stray
So count these treasures as you walk
The Sun, the moon, the tree
We have so much, be grateful
Thank god that you can see.*

E. Bignell



Mobile Service Clipping, Bathing & Grooming

K. Mitton
Canine Beautician

Telephone:
(0509) 212268
(0533) 302930



JOHN ENGLISH BUILDING & ROOFING CONTRACTOR

*All types of building repairs/alterations
Extensions - slate or tile re-roofs
Built up felt roofs & high performance
flat roof systems*

Free quotations - all work guaranteed

**Tel: Sileby 0509 813346
or Leics 0533 602190**



DONNAS HAIRWAYS 12b High St., Sileby Tel. 812357

We would like to wish all our customers a Merry Christmas & a Happy New Year.

Have a dazzling new style for the season.

Perms £15.50 - £34 Hi-Lights £18.50 Blow dries £5.20 Shampoo & Sets £4.80 -O.A.Ps cheaper

While you are here be the envy of all your friends with a tan.

R.U.V.A. SUPER FAST TANNING sunbed £2.50 for 1/2 hr or £20 for 10 sessions.

BYGONE SILEBY

As a resident of Sileby for some 70 years I have seen many changes and not all for the best. As a young girl my sisters and I lived in the Fish Shop Yard off King Street where Heaps Hardware Shop is now. In the yard were a number of cottages, a slaughter house and water pump which was shared by us all and pan toilets at the top of the yard, which we hated visiting in the dark nights.

A few names I remember, Mrs Marlowe, who kept a paper shop where my father helped. Miss Pickford (I think) who had a hat shop which was dimly lit and where we often played hide and seek. Mrs Allen's Fish Shop, Billy Voce's Butchers and Mrs Brightwell.

Everyone was very nice to one another and I often wish we could go back to those days.

Freda Handley (nee Pannell)

HOW MANY OF YOU CAN REMEMBER THESE?

Milkmen in Sileby

Warwickshire Dairy	King Street
Wesley Seal	Barrow Road
Silas Smith	Church Lane
Tom Newbold Milk & Bread	
Horace Yates	Cossington Road
Albert Burton	
Jimmy White	Seagrave Road
Eyres	Seagrave
T. Barwell	Seagrave

Coal Merchants


Herbert Draper
Harold Lovett
Les Lovett
Joe Allsop
Percy White
Leic. Co-op and Snowey
Steve Thurlington

Butchers in Sileby

Herbert Middleton	The Banks
Leics. Co-op	Swan Street
Johnny Blockley	King Street
Alf Parkinson	
Fred Wright	
Billy Voce, Pork butcher	
Allsop	High Street
Parkinson Brothers	

Green Grocery at your Door

Ted Bates
Ted Bond
Albert Burton
Colin Wells
Fred Widdowson
Smith & Byatt
Antills G/G and his Potted beef
Les Kimber



Fosse Flite
Sectional
Timber
Buildings

QUALITY **STRENGTH**

**2, KENDAL ROAD,
SILEBY,
LEICESTER,
LE12 7PF Tel. 0509 813590**

THE HOLE IN MY SHOE

QUALITY SHOE REPAIRS
BAGS & SHOE CARE PRODUCTS
DRY CLEANING SERVICE
CARPET CLEANER FOR HIRE
KEY CUTTING
1, HIGH STREET, SILEBY



A Visit to Severn Trent Water Works at Cropston

On the evening of the 14th of September your Parish Council and guests paid a visit to Severn Trent Water Treatment Works at Cropston. Unfortunately the tour of the actual works had to be cancelled as major improvements were taking place but we were entertained in the Visitors Centre with an Information video and a slide show, a lot of which had been filmed at Cropston.

The centre itself is housed in the old pumping station, which has been very tastefully renovated and contains a number of old machines used earlier in the century. Also in the centre is an educational block aimed at Primary Schools, this is a great success and booked for field trips for the next four terms.

The evening ended with a buffet supper and our guide answered any questions raised. We must thank Severn Trent for their hospitality and our guide for a most enjoyable evening and for giving us an insight into the cleansing of the water. We all take so much for granted and more than justifies the water bills we so often moan about.

Mrs P.A. Larke

If you would like any information about Cropston water treatment plant you can contact Barry Fitzpatrick, District Manager at Gorse Hill, Anstey (Leicester 340340)

LIVE THEATRE IN SILEBY

Just after the 10th edition was delivered to everyone, the Stockade Committee received a telephone call from Charnwood Arts asking if we would work with them to organise a visit by Heartbreak Productions who were looking for a venue in the Charnwood area, as part of their tour, to perform John Osborne's play 'Look Back in Anger'. Obviously, due to timing we were unable to advertise the performance in the Stockade, so we had to rely on posters, articles in the local press and a mention on Radio Leicester. The performance took place on Wednesday 10th November at the Village Institute - unfortunately only about 40 people were in the audience - of which three had travelled from Swadlingcote, two from Uppingham and four from Rothley! This was quite a disappointing turnout from Sileby (a population of over 6,000) - and Sileby's loss!

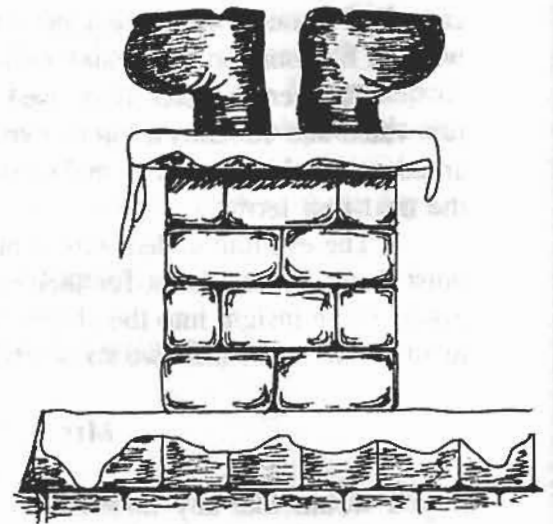
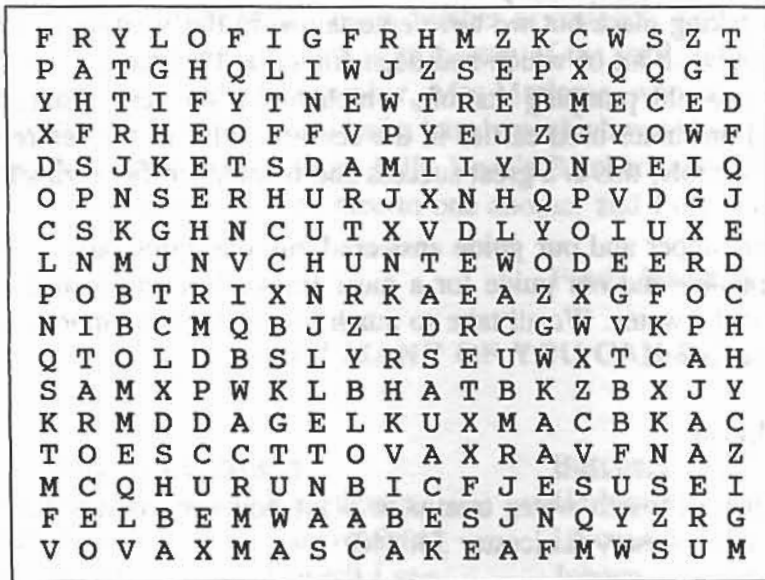
Everyone there thoroughly enjoyed their evening, the acting was superb - and even Mr Harry Martin, from the Leicester Mercury couldn't praise the cast enough! This serious adult production was so well performed that the applause even from our small group of audience ran out for a long time after the event. I really hope this company will not be put off coming back to our village - **THIS REALLY WAS A NIGHT AND PERFORMANCE TO REMEMBER.**

Please make a note in your diaries for the Stockade's next event. This will be 'Father Brown and the Royal Theatre Mystery' on Thursday 9th December at Sileby Community Centre, 7.30pm. We have asked back the Royal Theatre Touring Company from Northampton who many of you will have seen a couple of years ago at Redlands School when they performed 'Moon Bow Gold'. This new performance is for all the family - come along for a good night's entertainment just right for the festive season.

Tickets are priced at £3 and £2 (for concessionaries), and this price includes refreshments during the interval.

The Stockade Committee and the Royal Theatre Touring Company look forward to seeing you on the night.

K I D S Christmas Word Search - By Hayley Auld



Clues to finding words in any direction:.

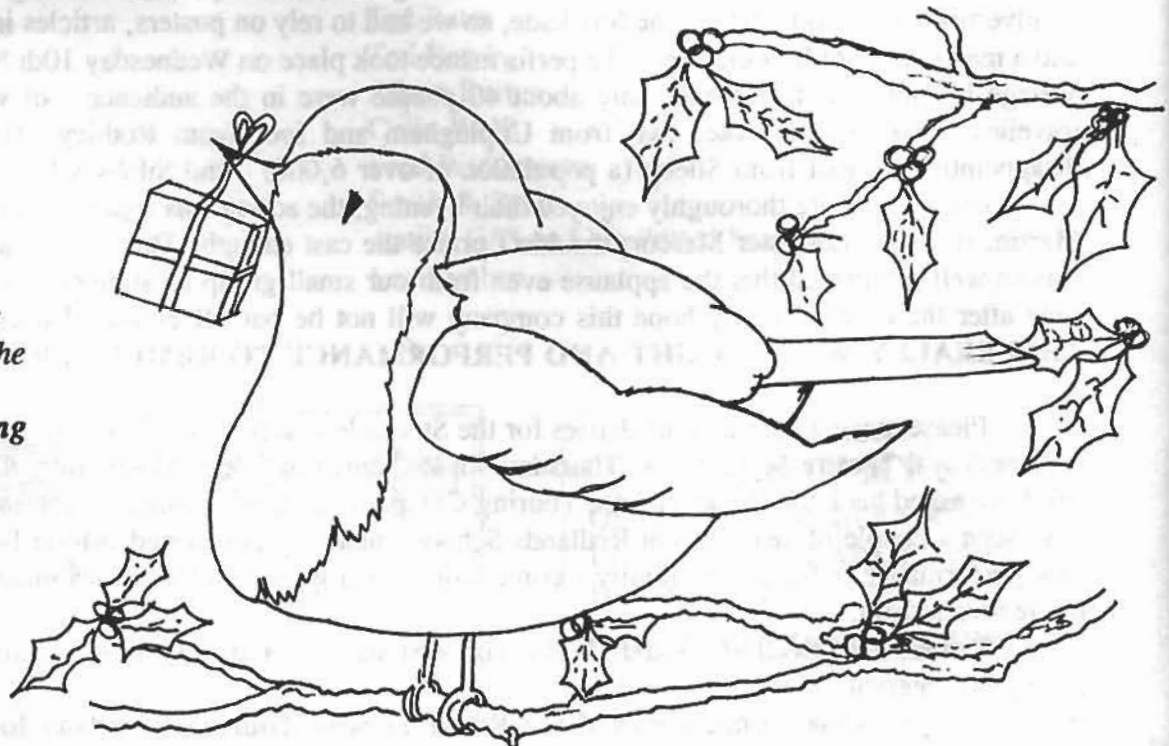
1. He delivers your presents. F _ _ _ R C _ _ _ _ S.
2. Date of Christmas Day. D _ _ _ _ R T _ _ _ _ _ H.
3. They pull Father Christmas's sleigh. R _ _ _ _ R.
4. The special baby born on Christmas Day. J _ _ _ S.
5. You put these up around your house. D _ _ _ _ _ S.
6. Word short for Christmas. X _ _ S.
7. You make a wish when you stir this. X _ _ S C _ _ E.

*Knock, Knock
Who's there
Francis
Francis, who?
France is over
the channel!!*

*What did the big
chimney say to the
little chimney?
You're too young
to smoke!!*

*Knock, knock
Who's there?
Daisy
Daisy, who?
Daisy chain!!*

Alison



ROBIN - by Helen Root

THE POWER OF THE PRESS

We have just returned home after a long weekend spent with our friends in Somerset. They live in a small village situated 5 miles from the Cheddar Gorge and 8 miles from Weston-Super-Mare, I'm sure many Stockade readers will be familiar with the area.

We took a copy of the Stockade with us - they are quite familiar with Sileby, having visited us many times over the years. They found it of great interest and were impressed with the poems, articles and the quiz. They were particularly interested because they too produce a local paper, something like the Stockade, covering events in their village and the village next to it - both about the size of Cossington, so cannot claim to have as many readers as the Stockade but they do send copies to many ex-villagers who have emigrated or moved to other areas of the British Isles. They have a wide distribution area, copies are sent to Canada, New Zealand, Africa a couple of copies come to us at Sileby.

The magazine/paper called the "Allerton News" is produced monthly except at Christmas time, when the December edition is delayed until the 15th then there is no issue until 1st February thus giving the editor and staff a Christmas break. They charge 20p a copy - everyone wanting to receive a copy pays for a years supply at the beginning of the year thus saving the bother of collecting monthly.

The venture began as an idea of a former vicar (now living in New Zealand). Originally the general opinion was that it would flourish for a short time then die out - but not so! They are now in their 21st year of publication and have increased the number of readers over the years. Being such a small community almost everyone knows everyone - newcomers to the village are welcomed-in print; people leaving the village are wished God - speed: weddings and 18th birthdays are given a mention - in fact all hatches, matches and despatches are recorded. Items for sale can be advertised and of course trade advertisements bring in a steady revenue. One gentleman who keeps weather records still submits a monthly report on statistics even though he has retired and moved out of the village. Reports of W.I. activities, cricket results and fixtures etc, coach outings, local drama group productions - all find a place in the pages of the 'Allerton News'. Like our own magazine, articles about the village in years gone by are welcomed and regularly printed. As our friend Fay is on the editorial staff, they may feature some ideas from the Stockade in future issues.

It would be nice to think that the Stockade will be still going strong in 21 years - I think the editorial staff deserve everyone's support and I look forward to future editions with anticipation.

Eric Willett



VEHICLE TESTING STATION
APPROVED BY
THE MINISTRY OF TRANSPORT

COUNTY MOTOR SERVICES

19 KING STREET
SILEBY
LEICESTERSHIRE
Tel: Loughborough 813118

**SERVICING • REPAIRS • WELDING
INSURANCE WORK UNDERTAKEN
TRACKING • FULL RESPRAYS
M.O.T. TESTING**

Proprietors: MALC BURFORD & FRANK BUTTARAZZI



REASONABLE ACCESS

She always woke early on Saturday mornings, that is if she had slept at all. Saturday was the day he came for the boys. He could have kept them all weekend if he wanted, but after the first few weekends he always brought them back on Saturday nights. She couldn't make up her mind if she was pleased about this or not. She was always glad to see them back, because there was always the dread that he might abduct them and take them far away. She was very sorry for the boys though, because they must know he was tiring of them.

At first he and his girlfriend took them to the pictures and McDonalds on Saturday. On Sunday he would take them to watch some kind of sport. They always came back excited but happy to see her. This didn't last long however - whether it was the girlfriend who had grown tired of the boys or both of them. She had followed them one Saturday, keeping well behind in her car. She was proud of herself, he almost saw her once when they were walking towards the park. There was a younger boy with them and he had his hand on the boys shoulder, she supposed that was the girlfriend's son. Anyway she thought the woman was gone now, she certainly never came in the car and he didn't look as spruce as he used to. She didn't like to question the boys, questions about the woman always upset them.

When they had gone on Saturday mornings, she always cleaned the house from top to bottom although it didn't need it; but no matter how hard she worked she couldn't keep her thoughts at bay. Where had it all gone wrong? As far as she knew she had been happy, growing up together there had never been anyone else for her. Her happiest memories were the courting days and the first years of marriage. The nights out at the cinema and the Rock and Roll evenings. A lot of that stopped of course after the children were born, but he never seemed unhappy, or had she missed something? Certainly, the weeks leading up to his leaving she knew he had something on his mind, but he said it was work and she believed him. She would never forget the night he told her. The day had been so ordinary, nothing to warn her. He had been outside kicking a ball about with the boys. After they went to bed he told her he was leaving her. He was leaving because he was in love with someone else. What was he saying? He couldn't leave her, of course he didn't mean it. He meant it. Her whole world collapsed. No matter how many times she asked him "Why?", he couldn't tell her. He still loved her, he said, but he had to go. After the first shock the anger came, she stormed at him but it made no difference. He left her.

The battles started, evidence for divorce (which was quite easy, considering). He wanted access to the boys, selfishly she had fought it, but in the end he was granted reasonable access. He could have them every weekend 'as long as they wanted it'. They had wanted it, of course. He gave them much more than she could. Then the Sundays stopped and she was certain he was alone; "Good", she thought, "Serves him right". Lately though she had begun to feel differently towards him, he looked so lost when he brought the boys back. He always let them out of the car and waited until she opened the door, then he would wave to them and drive away. Last week he had come right up to the door and when she answered it, he had smiled at her and said "How've you been?". Her heart was thumping as she answered "Fine. How are you?". Oh God, she thought, I wish he would come in, but he walked away to the car.

That was last week and now it was time for him to bring them back again. She would ask him in this week, and if they had a drink together and perhaps a talk with the boys there, perhaps, who knows? He knocked at the door, "Hello, how've you been?" "Fine" she answered. He turned and walked away - She didn't ask him in.

ADA

"Bunters Cafe"
High Street, Sileby
Sileby 812532

Joyce & Trevor
offer you a warm welcome at
THE FOUNTAIN INN
Brook Street
Real Ales - Guinness - Murphy's
Skittle Alley - Table Tennis
Small functions catered for
Live music
Wednesday & Sunday evenings

The Death of The High Street

*The High Street has gone to the dogs, they say.
The shops closing down, day by day.
First it was Merlins to vanish like magic.
Then came Barclays Bank, which was the most tragic.
People stopped coming from places around,
To shop in the High Street of Sileby Town.
It got quieter and quieter as the year went on
And very soon the pet shop was gone.
A shoe shop opened in Merlins place,
And a glimmer of hope put a smile on our face.
But it soon closed down, no one wanted to know,
To buy their shoes, somewhere else they'd go.
Around the corner, opened a barber and gym,
A chance to get fit, feel good, have a trim.
But very soon the shop it was shut,
People stayed fat, didn't have their hair cut,
But the biggest shock was still to come,
The chemist was closing to move into one,
The furniture shop then followed the trend,
The life in the High Street was nearing it's end*

*The remaining shops struggle to stay alive,
How much longer can they survive.
So come all you folk of Sileby Town,
Come and take a look around,
Leave your cars at home and use your feet
and breath life back into the High Street.*

Len

WHAT ARE YOU DOING ON BOXING DAY?

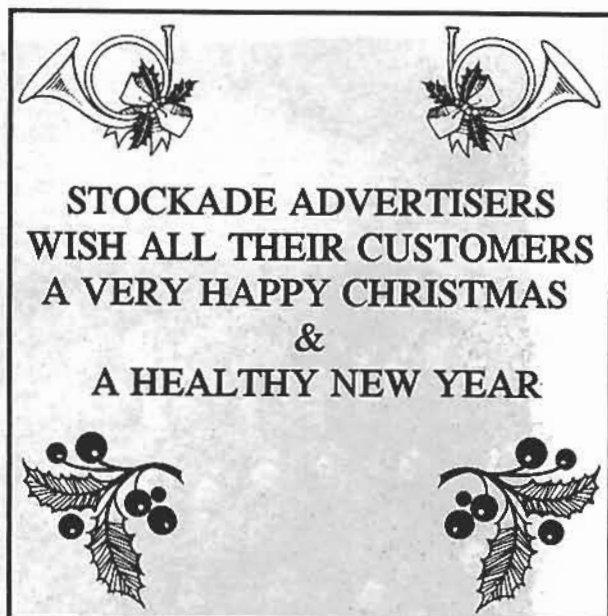
As some of you will already know there is an annual walk which takes place on Boxing Day each year. The event is organised by The Leicester Walking Club and this year they are expecting a number of Olympic walkers to take part as well as International representatives and leading juniors.

Chris Smith, the National Publicity Officer for Race Walkers, has contacted us to tell us that the event is being held from the White Swan and starts at 10.00am. There will be two races in the form of a junior 2 lap, 2.5 kilometre walk and a senior 6 lap, 7.5 kilometre walk. Locals wishing to walk either for fun or charity are most welcome.

The event will be followed by a presentation in the Swan and any local interest would be most welcome. Further details can be obtained from **Chris Smith on Leicester 518744.**

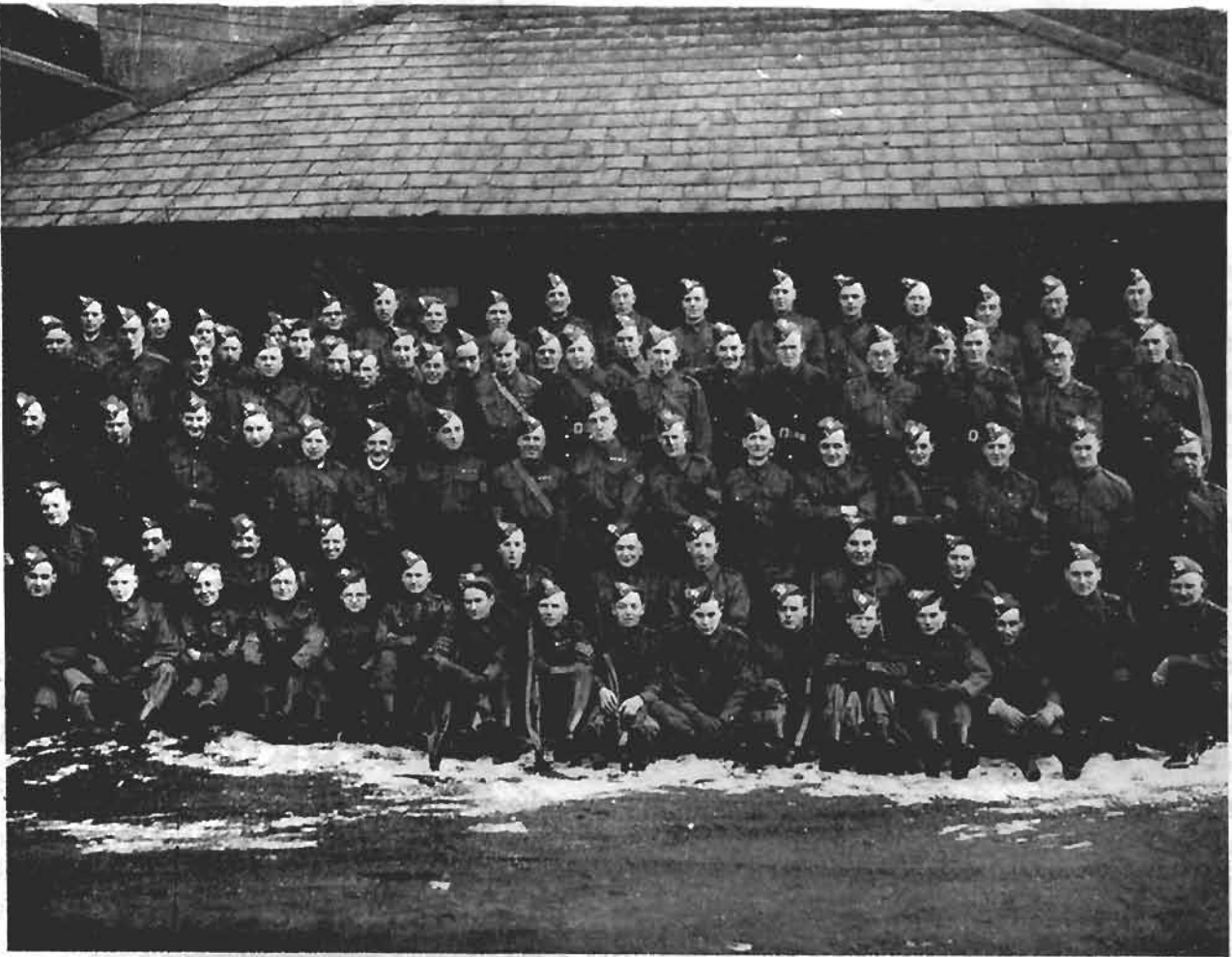
SPORTS INJURY AND PHYSIOTHERAPY CLINIC

PHONE ANGIE ROBINSON, Grad Dip Phys, MCSP, SRP, Chartered Physiotherapist
SILEBY 816673



KIMBERS FARM Cossington Road, Sileby Tel: 812297
For Quality Fresh Fruit & Vegetables Local and Homegrown Produce Telephone orders taken Free delivery Open 7 days a week

SILEBY HOME GUARD



Thanks to the gentleman who has loaned us this photograph of Sileby Home Guard. Flossie Bunney has put some names to faces - but there are a few gaps; can you help to fill them?

From the left

- BACK ROW:** Eddy Newby, Ted Bott, -, -, John Lee, Arthur Cox, Cyril Fox, Fred Fox, -, Ernie Smart, Stan Dakin, -, -, Edwin Rose, -, Frank Mercy, Tom Draper.
- SECOND ROW:** -, Ernie Poole, -, Bill Hudson, -, -, -, -, -, -, Willie Parkinson, H. Simions, -, -, -, -, Jack Orton, Cecil Wright, -, -, Ernie Peel, -.
- THIRD ROW:** -, -, -, -, A Williams, -, -, Ted Bates, Frank Smith, -, -, -, -, -, Rupert Preston, -.
- FOURTH ROW:** -, -, -, -, -, Walter Spence, -, -, -, Bob Ward.
- FIFTH ROW:** -, -, -, -, -, -, Fig Smith, -, Erine Hyman, Jimmy Wilson, Arch Smith, -, -, -.

Woods Pet Supplies

20 High St., Sileby, Nr. Dudley's Bridge Tel: 0509 816499
YOUR LOCAL SHOP FOR THE ANIMAL LOVER
 * Pet food and accessories for all animals *
 * Frozen meats available *
CLEARANCE SALE ON SURPLUS STOCK

B. YATES & SON

Registered and Authorised Plumbing
 and Heating Engineers
 British Gas Appointed Installers
 Bathrooms and Kitchens
 98 BARROW ROAD SILEBY
 Phone: SILEBY 812382

In Defence of Sileby

I am questioning the motive behind the article 'Sileby Ancient and Modern' in the last edition. As a 'villager' (although not a native) of Sileby, I do object to change for change sake and changes imposed upon us ie.

- (a) Railway Station Closure
- (b) Education away from the Village

Let's discuss:-

- (a) Our station was well patronised and the closure meant enforced use of the car.
- (b) Children attending school away from the village results in divided loyalties. After school activities must be mentioned. These often include parents, as well as their offspring.

But this is today, the railway decision is being 'U-Turned' - the station is to re-open. However, this will not mean returning to the Sileby we knew then. Likewise the Village Hall question. Owing to the shortage of recreational space in the village, the re-siting of another hall with grounds of it's own is out of the question.

So lets face facts. We are left with the relics of the past. In particular, the two railway bridges. Right now, with Sileby's present population level and vehicle density, the roads in Sileby are in CHAOS. Swan Street and King Street are no more than single lanes. Access to the essential facilities (especially for the young and the old) ie Doctors Surgeries, chemist, banks, post office, shops and car parking are all under constant pressure and the bridges prevent a one-way system being devised. It's obvious then that no amount of further road building around Sileby can address that problem.

Now in regards to a large housing development project in Sileby, it begs the Question WHERE? and after that we must ask in the light of the chaos that already exists WHY? Let's not forget that the PLANNERS and EXPERTS got it wrong with the Sileby by-pass and it was the VILLAGERS who came up with the facts.

So are we simply opposed to changes? - to BARMY IDEAS, YES! Therefore bear that in mind if you have more ideas in like vein i.e. perhaps you might be considering updating the Evergreen Club. Possibly banning bingo and substituting BUNGEE JUMPING!

Finally then, instead of trying to cram more people and vehicles into Sileby why not assist in solving the outstanding problems regarding the facilities. Never forget it's HELL NOW. Remember in conclusion, that the villagers are not responsible for the recession - but the sufferers witness the empty shops, closed business premises etc. That was another CHANGE we didn't want.

JACK LONGDON

William H. Brown

RESIDENTIAL

Estate Agents, Valuers & Surveyors

SILEBY LOCAL OFFICE

4a HIGH STREET

SILEBY

LE12 7RX

Tel. 0509 812859



Royal
Insurance

Alan Sharman

Industrial & Domestic Electrical Contractor

SHOWERS, SOCKETS, LIGHTS,
HEATING, WATER HEATERS

"The Nook", 225 Cossington Road, Sileby,
Loughborough. Tel. Sileby 812287

FREE ESTIMATES & ADVICE



National Inspection Council for
Electrical Installation Contracting

N I C E I C

APPROVED CONTRACTOR

IVANHOE LINE

The Stockade committee was invited to send someone to the ceremony for the removal of the first brick. I was duly nominated and attended the ceremony. The start was initiated by a lone piper followed by a short speech by the representative of British Rail. This was followed by speeches from the leaders of Leicestershire County Council and Derbyshire County Council.

Among the civic dignitaries were the leader of Blaby District Council and the Lord Mayor of Leicester. After the speeches the ceremony for the removal of the brick was performed by the leader of Leicestershire County Council. The invited guests then retired to county hall for a buffet lunch. Very nice thank you.

Whilst at county hall, there was on display the plans for Sileby Station. From these plans it was seen that there were in fact two sets of stairs for access to the platforms, one for the line to Loughborough (where the brick was removed) and the other for the line to Leicester just inside the boundary between Towles factory and the railway embankment. However like Barrow station there appeared to be no provision for wheelchair access, but we will have to wait and see.

On that note it was very pleasing that the Ivanhoe line had taken a visible step to bringing back trains to Sileby.

T.J. Mugridge.

P.S. We have received a couple of articles regarding the original station and we shall be including these nearer to the official opening of Sileby Station.



**MERCURY NEWS
SHOPS
HIGH STREET, SILEBY
Tel. SILEBY 812567**

Mercury



WE ARE SILEBY'S PREMIER NEWSAGENT WITH AN
UNRIVALLED HOME NEWS DELIVERY SERVICE

WE DELIVER NEWSPAPERS AND MAGAZINES THROUGHOUT THE TOWN AND
SURROUNDING VILLAGES AND OF COURSE ARE ALSO THE MAIN
SUPPLIER OF THE "LEICESTER MERCURY" YOUR LOCAL DAILY

WE OPERATE A FREE DELIVERY SERVICE FOR THE LEICESTER MERCURY -
WHY NOT CALL IN AT OUR HIGH STREET BRANCH TO TAKE ADVANTAGE
OF THIS FANTASTIC OFFER

ALSO PLEASE ASK TO SEE OUR NEW MAGAZINE DIRECTORY WHICH LISTS
INFORMATION FOR YOUR INTEREST ON OVER 2000 MAGAZINES AVAILABLE

MERCURY NEWS SHOPS - YOUR LOCAL NEWSAGENT

Village Darts News

Sibley's Super League team playing from the W.M.C., King Street, have made a steady start to their first season in the league winning three out of six games to date. Sponsorship for team shirts has been secured from the Tower Design Company, Leicester to whom we are very grateful.

Remaining games at home, all of which start at 1.30 p.m., are as follows:-

December 4th v Swadlincote

January 22nd v Coalville

December 18th v North Leicester

February 19th v Ketton

SUPPORT IS ALWAYS WELCOME.

The Sibley Charity Darts League commenced on Thursday 21st October and it is hoped we can match last year's donations of over £500 to village 'Funds' at the end of the season.

Twenty four teams in three divisions are playing Thursday nights throughout the winter. The sponsors for this season who we send our appreciation to are:

Division 1 (W.M.C.), Division 2 (Fountain Inn), Division 3 (Harlequin Wallpaper Covering) K.O. Cup (Free Trade), Jubilee Threes (White Swan), Ladies Pairs (Constitutional club), Mens Pairs (White Swan), Mixed Pairs (Link Training), Mens Singles (Contex Leisurewear), Ladies Singles (Duke of York), 180's (Eric Barefoot), Ladies 140's (Ken Baker), Men's Tons (Constitutional Tote), Ladies Tons (Andrews Florists), Mens High Finish (Horse and Trumpet), Ladies High Finish (Helen Claire Trophy).

RCF

Joinery

Doors . Windows . Glazing etc
Purpose Built Joinery & Repairs



Tel: (0509) 268874

GLENN LEWIN
Butcher & Greengrocer
1 Ratcliffe Road
SIBLEBY
Tel. 812246

MICK. BALL
PLASTERER & BUILDER
PROPERTY REPAIRS AND ALTERATIONS

• Free Estimates • No job too small

2 Sherrard Drive, Sibley, Loughborough,
Leics, LE12 7SG Tel: Sibley 814006

**MACHINERY
SERVICES**

Lawnmower Repair Specialists
Let us service your mower

12c High Street, Sibley
(Between Hairdressers and
Furniture shop along public
footpath) Tel. Sibley 812140

Further to Mr Wilf Preston's letter concerning the Home Guard of which my husband (though too shy to write himself) was a member, before joining the army proper.

One rainy evening, a member sounding very official called saying "Report to Headquarters immediately, wellingtons if possible". It appeared that two Italians had escaped from their P.O.W. camp and my husband with others, was detailed to search Grace Barber's Farm and not to shoot should they sight them. I feel sure had they appeared Grace would have dealt with them adequately. They were run to earth in Swithland Woods, I believe they only did it for a lark. Later they were given far more freedom and dug out the ditches between Seagrave Road and Seagrave, in the fields for drainage purposes and they filled in the pond in the field at the back of Seagrave Road houses, now Greedon Rise. Though best of all they emptied our dustbins which previously during the war years had only been accomplished four times a year, paper being collected separately. Sometimes they would congregate at the road side for a sing song, a joy to hear, though quite un-english and they were very fond of children. I feel sure they were better off here than in their own impoverished country particularly the southern part as my husband who was stationed there can testify.

Few people realize that there was a home guard during the first world war though they were called "Citizens" then. Though called out on September 1917 to search the Humbles, Cossington, when rumour had it that two German Spies were hiding there the search proved fruitless. One of the Citizens, reluctant to leave his wife as she gave birth to a daughter that night still had to go.

Ethel Derry.

Cricket - The Factory Cup Final

In a repeat of the previous final, Newbolds played the Traders, on Sunday 26th September at Sileby Town Cricket club Mill Lane ground. The Traders won the toss and elected to bat. Wickets fell steadily, although the score was moving quickly, causing Newbolds some concern. An attacking 50 not out/retired by A.Yates ably supported by D.Whittington 13, and C.Preston 12, laid a solid foundation, however Newbolds began to get on top. Good spells by Bennet 2 for 6, Ette 1 for 6 and Widdowson 2 for 5 being the pick of the bowlers. A quick final flurry by N.Lewin 9 not out left Newbolds chasing 125 for victory. Newbolds batsmen started very confidently and although Clarke, Lord and Whittington (2) got among the wickets, never looked in danger of losing thanks mainly to a fine 47 not out by N.Loxley, B.Richardson 14, and a cavalier 15 not out by P.Measures saw them home. Sweet revenge for the previous Final's defeat. Congratulations to both sides for a fine game producing over 250 runs played in a very sportsman-like and enjoyable fashion.

After the presentation thanks were expressed to Rob Hands, Rich James and Steve 'Crusher' Page who between them did the umpiring, scoring and barwork, groundwork and even the washing up. Without the three of them no cricket could have been played. **Thanks again.**

Any side wishing to participate in next years matches please contact Rob Harris on Sileby 812858.

Scorecards:

TRADERS			
N.Batts	Ct Ette	b. Taylor	6
A.Yates	Retired		50
J.Halford	Ct Kellis-Kelly	b. Clarke	6
D.Whittington		b. Ette	13
C.Preston	Ct Clarke	b. Widdowson	12
C.Lewin		b. Bennett	3
B.Lewin		L.b.w. Measures	3
P.Lord		b. Bennett	1
N.Clarke	Ct Measures	b. Widdowson	2
N.Lewin	Not out		9
S.Batts	Run out		2
Extras			16
Total			124

NEWBOLDS			
N.Loxley	Not out		47
B.Taylor	Ct Whittington	b. N.Clarke	6
B.Richardson		L.b.w. Whittington	14
N.Clarke	Ct N.Batts	b. Lord	9
A.Collin		b. Whittington	2
P.Measures	Not out		15
Extras			29
Total			128

Sileby Conservative Club

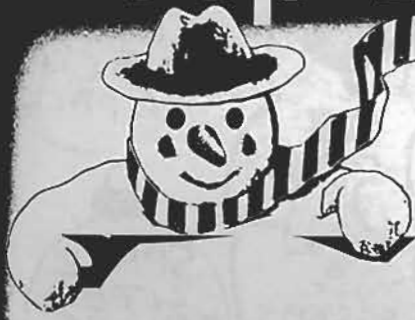
Room for hire incl. bar for all functions.

Also Skittle Alley. Good facilities.

Catering available on request.

Apply Secretary - phone 812210

Keep Warm Keep Well



1993-94

This winter you can play a vital part in helping elderly and vulnerable people to cope with the cold weather.

Our free brochure and the Winter Warmth line's free telephone advice service give practical information on how to keep warm and stay healthy for everyone who may be at risk.

Available from:
'Keep **Warm**, Keep Well'
FREEPOST (SE 2851)
London SE99 7XU



the Winter Warmth line
FREE 0800 289 404
text-only Minicom
for deaf people
FREE 0800 26 96 26

- Contains advice and information on:
- keeping warm at home and outdoors
 - diet, clothing and home insulation
 - help available from voluntary organisations
 - community insulation projects
 - benefits and grants
 - where to turn for help with heating bills
 - what to do in an emergency

Help the Aged

AGE Concern

NEIGHBOURHOOD ENERGY ACTION

A joint venture by voluntary organisations and Government Departments
Prepared by the Department of Health. Printed in the UK. 8 93. COIX J02 1270NE 310M

What you can do to help

Tell elderly and vulnerable people about the free Winter Warmth line

**ALSO: SOUTH CHARNWOOD ICE DESK
LOCAL CONTACT IN WINTER EMERGENCY:**

ALAN + SHEILA TURNER

tel: 812493

Thank you for helping to get the 'Keep **Warm**, Keep Well' message across.

Keep Warm, Keep Well

- Have some hot food and drink every day
- Take a little exercise every day
- Wrap up warmly before going out - no matter how short the trip
- Always wear gloves and a hat, cap or headscarf out of doors
- Keep warm in bed at night
- Keep at least one room well heated in very cold weather
- Make sure your home is well insulated
- If you have any problems paying for your heating or risk being disconnected, seek help straight away

Merry-Christmas-from-Heaps-Hardware

12 CRACKERS £2-95

TEN SHEETS WRAP 50P

FRAMES PICTURE LARGE STOCK

£9-80 VICTORIAN OIL LAMPS

40 TWINKLE LIGHTS £10-50

WINE BEER GLASSES CHEERS

JUG KETTLE £10-95

12 DELUX CRACKERS £6-25

METAL XMAS WRAP 50P A PACK

SPARE LITE BULBS PUSH SCREW

TORCH RUBBER £1-99

The Oasis

6, King Street, Sileby. Tel. 3866

Delivery available on 23rd December and up to Noon on 24th December



ORDER FORM FOR CHRISTMAS

Name

Address

Tel. No.

	QTY	PRICE
POTATOES RED		
WHITE		
NEW		
CAULIFLOWER		
SPROUTS		
SPROUT TOPS		
CARROTS		
LEEKs		
SWEDE		
TURNIPS		
CALIBRESE		
CABBAGE DUTCH		
SAVOY		
ONIONS COOKING		
SPANISH		
AUBERGINES		
PARSNIPS		
COURGETTES		
MUSHROOMS		
PARSLEY		

Xmas Trees & Wreaths Available

ALL ITEMS SUBJECT TO AVAILABILITY.

	QTY	PRICE
APPLES COX'S		
GRANNY SMITHS		
GOLDEN DEL.		
RUSSET		
RED		
BRAMLEY		
PEARS CONF.		
PEARS COMICE		
ORANGES LARGE		
ORANGES SMALL		
SATSUMAS		
CLEMANTINES		
GRAPES GREEN		
GRAPES BLACK		
BANANAS		
LEMONS		
GRAPEFRUIT		
MELONS		
PINEAPPLE		
KIWIS		
DATES FRESH		
DATES BOXED		
FIGS PKT.		

	QTY	PRICE
LETTUCE FLAT		
LETTUCE ICEBERG		
CHINESE LEAVES		
TOMATOES		
CUCUMBER		
CELERY		
ONIONS SPRING		
RED SALAD		
BEETROOT		
BOX CRESS		
WATERCRESS		
PEPPERS RED		
GREEN		
ADVOCADO		
FENNEL		
RADISH		
WALNUTS		
BRAZILS		
COBNUTS		
ALMONDS		
PECANS		
CHESTNUTS		
MIXED NUTS		
PEANUTS IN SHELL		
COCONUTS		
MIXED FRUIT & NUTS		

TOTAL £