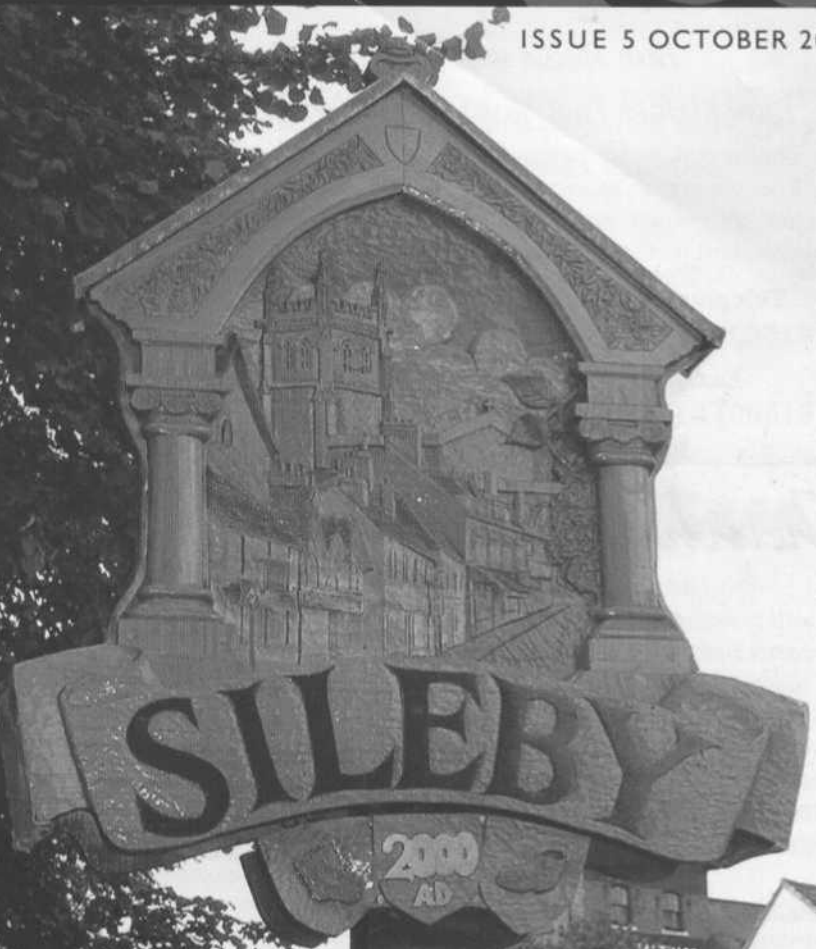


# talk @ Sileby

VILLAGE NEWSLETTER

ISSUE 5 OCTOBER 2002



THIS SIGN WAS ERECTED  
IN MEMORY OF  
PAUL MICHAEL LADKIN  
30-03-38 - 30-01-00

# The White Swan

SWAN STREET, SILEBY, LEICESTERSHIRE

*Bar Meals and Full à la Carte Menu*

*Lunchtimes (not Mon) - Evenings (not Sun or Mon)*

*Sunday Lunches and Skittle Alley for hire*

**Bob and Theresa Miller**

Telephone:

(01509) 814832

Fax:

(01509) 815995



*Credit Cards  
Accepted*

## Thank you

*You will notice a change in the who's who. For various reasons the team have changed and the new members are listed below. I would like to thank all those past and present members for their hard work and dedication, and we now go forward with a new team and a new Printer (Shepshed Knight)*

Roy Brown  
Co-ordinator

## Quiz Result Issue 3

.....

Issue 4 was sent to the printers before the winner of the Quiz in Issue 3 was determined. Those who entered all did extremely well and after a tie for first place a draw took place and Michael Sutton was the successful entrant. Considering the circulation of in excess of 2500 the response to the Quizzes in Issues 2 and 3 represented less than 1 %, this in a village with a thriving Quiz League!

**Who's  
who at**

**talk@sileby**

### Editorial Team

Popsy Gilbert  
Mark Spence  
Sheila Breed  
Freda Walker  
Roy Brown  
Lionel Blower

Louise Peers  
Jacqueline Williams  
Joe Vögtlin  
Ken Jones  
Barry Stevens  
Russel Dyas  
Ros Barber

Well here we are, another summer almost over and what a busy one it has been for Sileby. The Jubilee celebrations included a Party in the Park, a Dance and the unveiling of a new Village Sign.

We have had new building developments including the purpose built Leonard Cheshire facility and there are forces for positive change about. Here at the village magazine (that numerous among you made a request for in the Village Appraisal Questionnaire) we find ourselves getting desperately short of good quality material to include in future issues.

Despite our recent poster campaign – nothing! Once again, may we state that all inclusions are welcome and new blood on the team would be very much appreciated. Perhaps there are some of our younger readers who would be interested in the role of Junior Reporter?

We want this publication to continue to bring you the news, views and history of Sileby but without your contributions it simply will fade away. Please support the magazine and let's watch it go from strength to strength.

*Jacqueline Williams*

## VILLAGE HALL MODEL RAILWAY EXHIBITION

Two years ago, a model railway exhibition was held in the East Goscote Village Hall in aid of the playgroup based there. This event proved so successful that another is to be held by popular demand on the 19th October.

The exhibition will be open between 10:30am and 5:00pm, and will feature at least seven exhibits in a range of gauges from 2mm to the foot to 7mm to the foot. Three of the layouts featured will not have been seen in the East Midlands before and of course, Thomas will be there for the children.

Why not come along with your family?

### Admission -

Children (6-14 inc): 75p

Adults (14+): £1.50p

East Goscote Model Group in aid of East Goscote Village Hall Playgroup

Exhibition Manager: Mr John Malpus, 6, Wayfarer Drive, East Goscote, Leicester. LE7 3QZ  
Tel: 0116 2609789

Email: [egplaygroup@hotmail.com](mailto:egplaygroup@hotmail.com)

## BUS AND TRAIN SERVICES

Any problems relating to timekeeping and reliability of the Bus and Train Services can be passed to the operator via the Parish Council office (01509 813075). All complaints on this subject are collected by the Parish Council and submitted to the operator concerned on a monthly basis. Please use the answerphone if your call is out of normal office hours.

## Village Appraisal Report

### It's here! It's finally arrived! The Village Appraisal Report!

This should have hit your doormats at the end of September. We hope you read it carefully and then came along to "The Launch Event" to put your thoughts across at the Community Centre on the two following nights:

Friday 4th October at 7pm 'til 8:30pm  
Saturday 5th October at 7pm 'til 8:30pm.

These events will have included a breakdown of the report process and other presentations along with a question and answer time.

Remember, your opinions counted at the beginning now voice your thoughts on the report you contributed to.

## Sileby Set To Surf

**T**he **talk@Sileby** magazine has gone digital!

We are now on the web with current and past issues of the magazine. This regularly updated site will allow anyone to catch up on a missed mag, or re-read a favourite article. It also provides useful local information.

We are the one-stop resource for Sileby with the site containing all the news features and articles of previous magazines. There are lots of different subjects covered and a chance to have your say too. Travel timetables and information, and a local business and service directory is also available.

The website address is [www.talksileby.tk](http://www.talksileby.tk)  
Please let us know what you think of it and how we can improve it for you.

If you have any problems with accessing the website, please feel free to contact us at (07092) 378288.

## CONTACTS

### Co-ordinator:

Roy Brown, 175 Homefield Road,  
Sileby, LE12 7TG. (01509) 816545

### Advertising:

Joe Vöglin, 11 Swan Street, Sileby,  
LE12 7NN. (01509) 815946

The advertising rates for **talk@Sileby** are listed below:

The prices cover two issues of the magazine, each issue reaches 3,000+ houses.

Back Page £140

Full Page £100

Half Page £60

Quarter Page £40.

*Disclaimer: The views expressed in this magazine are the views of the contributors and not necessarily the views of the **talk@Sileby** team.*

### Copies of **talk@Sileby**

So many ex Sileby residents have asked for a copy of **talk@Sileby** that we have started a mailing list. Price per issue is 50p which includes p.p. (Four issues per year)

Please make cheques payable to: Sileby Village Newsletter.

---

# The Regeneration Game

---

I am by my very nature an optimist. It means that I usually see change as an opportunity rather than a threat. I have lived in the Soar valley for most of my life and for the last 12 years in Sileby and Quorn. I have seen what a difference local community involvement can have in transforming a place and what leaving it to others can do. I personally still believe that Sileby potentially has the most exciting prospects for positive change over the next decade if driven properly and locally.

Sileby, like other villages does not stand still. It has some really difficult and painful changes to manage. So what has Sileby had in recent times? One of the interesting things about being an MP is being involved with so many different initiatives across the whole constituency.

I have followed a number of community led bids that I have backed like the £42,000 for Sileby Tennis Club, (now providing the best facilities of all the villages locally) and like the thousands won and spent on the purpose built Youth Centre, the £100,000 from the lottery to go towards improving the community centre at the Catholic Church and the £100,000 available for economic regeneration to provide employment opportunities in the village.

There is massive investment going into flood relief too and not before time. Sileby is the only village to get this money and strangely enough I hear other villages moaning that Sileby seems to be getting it all at the moment. Yet I know

that I usually hear this as the familiar complaint from Sileby.

What prompted me to remind myself about how much has gone into the village was a letter from somebody who wondered why Quorn had a skateboard ramp and not Sileby? It finished 'Sileby can be a lovely place too'.

I couldn't agree more about the last sentiment. With a bit of love and care as well as a clear vision of where it wants to go it can be. But, as I have said before, this has to be locally driven. Quorn has a skateboard park because its Parish Council paid for it. In fact most of the things happening in Quorn are driven by an active Parish Council and private developers responding to a clear vision set out and steadily delivered.

My great hope is that the Sileby village appraisal is clear enough to give a real idea of what people want and that can be realistically delivered in Sileby. Once this is in place all of those with influence and energy can pull in the same direction to make it happen. Without a goal the future shape of the village is uncertain.

I personally want to get behind such a vision and pull all of the agencies in to help deliver it. From my years of experience of working in economic and social regeneration before becoming an MP, I can help but it has to be locally led.

That is why I have called for the Planners not to get carried away with simple

*continued overleaf*

housing developments but to give the village the balance that made it such a thriving place industry, housing, leisure and shops.

Of course more is needed to transform the village, but the public purse and lottery can only do so much; the rest will come from private developers. The village has an unemployment rate of 2.8%, a healthy housing stock, a railway line, and a wide range of community facilities.

Now the challenge is to turn the opportunity of Brownfield sites into something that benefits the village. This will only be achieved through a locally held and owned vision for the future and driven through by energetic, enthusiastic local individuals and groups working with a vibrant and forward looking Parish

Council. The school report would read 'Sibley has been through some difficult times, has great potential but must now work hard to realise its assets.'

In the next issue I want to tackle the problems of sporting and recreational facilities in the village, so I would like to hear from people about their views over the next few weeks.

Andy Reed MP  
House of Commons  
SW1A 0AA

Please use the following to contact  
Andy:

reedea@parliament.uk  
www.andyreedmp.org.uk  
Tel: 020 7219 3529 or 01509 261226

## **HEAPS HARDWARE**

HOUSEHOLD GOODS  
TOOLS: ELECTRICAL  
NUTS / BOLTS / SCREWS  
PAINT & TIMBER  
ELECTRIC HEATERS  
LADDERS & STEPS  
PLUMBING GOODS

50 YEARS TRADING 2002

10-12 KING STREET, SIBLEY  
Tel: (01509) 812451

## **A.K. GARDEN MACHINERY**

**LAWNMOWER - SALES  
SERVICE - SHARPEN - REPAIRS**

At the  
HILLTOP  
Leicester Road  
Mountsorrel

**Tel: Andrew  
0116 230 3813  
Mobile: 07951 764368**

**We are half the price of our competitors**



---

# Gardening

---

You either love it or you hate it, I am myself though, rather middle of the road (sorry, garden) until all began to change at the beginning of this year.

I answered a small ad in the Leicester Mercury, which was asking for anyone interested in helping to set up a Gardening Club in Sileby.

We had our first informal meeting in March, attended by eight people from

different areas of the village. We sat around a table not really knowing how to begin.

So we supposed the only relevant thing to do was to throw the seeds of ideas around, wait for germination and then start planting – with the emphasis to bring a feeling of community spirit to gardeners in the village. With Mr Roy Brown's guidance, a committee was formed, thus "The Gardening Gnomes" was founded. Ploughing our way with enthusiasm, we discussed venues, open monthly meetings, outings to gardens, arboretums and garden centres and much, much more.

Our first open meeting took place in June with a speaker from Brooksby College, which was a great success.

We are growing steadily in numbers, so if you would like to join or participate in any way, please contact the secretary on Sileby (01509) 812698, or just come along to hear the speaker and enjoy the evening. After all, the "answer lies in the soil".

*Monica*

## Forthcoming meetings of the **Gardening Gnomes**



Wednesday 16th October  
Wednesday 13th November  
Wednesday 11th December

Mr F Headley from the Dahlia Society.  
Herbs to grow in Winter – Mr Barton.  
Flower Arranging by Mrs Janet Staniforth

All meetings are at Sileby Conservative Club in the upstairs room at 8pm.



# Andies

Private Hire

**TAXIS AND**

**8-SEATER MINI-BUS**

Airports - Schools - Pubs & Clubs -  
Courier Work - Contracted Work

**LONG AND SHORT DISTANCE NO OBJECT**

**Tel: (Mountsorrel) 0116 230 1313**

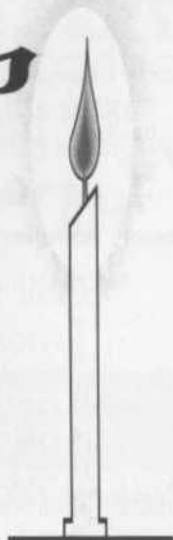
# Inspirations

*Flowers - Crafts -  
Giftware and Furnishings*

*Mr & Mrs Jackson*

**30 KING STREET, SILEBY  
LOUGHBOROUGH,  
LEICESTERSHIRE LE12 7NA  
Mobile: 07773 602361**

*"We support local Artists and Crafts"*





# The New Youth Movement

Calling all 11 to 16 year olds!

**A**re you bored and just hanging around the village on a Tuesday and Thursday night? Or maybe you're new in the village and want to make new friends?

Do you wish to get access to the Internet and a modern computer suite with lots of software, play pool, maybe just hang out and listen to Music?

Then come on down to Sileby Youth Club between 6 and 8pm. With activities planned throughout all of the summer what more can you ask for? Now the Youth Club is going to be even better due to the fact that the Millennium Awards have given us a grant for new and better equipment.

So it's exciting times for the Youth Club and you could be a part of it. We are also looking to hear from anyone who wishes to volunteer to help the youth workers run the club. No experience is needed. The only requirement is to be willing to make a difference to the young people of Sileby and be willing to learn.

For more information on joining the club or to volunteer as a worker, please contact (07092) 378288.

Russell Dyas - Youth Worker.

**COUNTY ALARMS**

**112 CHARLES STREET, SILEBY**

**Intruder Alarms - Fire Alarms**

**Camera installations - Security Lighting**

**Tel: (01509) 816143 - Mobile: 07850 103677**

# We need a guiding light!!

## *Could this be you??*

Could you spare a little time  
To help some younger folk?  
They're keen to learn, love games and  
fun  
And also like a joke.

Many Brownies, Rainbows and Guides  
Are feeling rather sad:  
Their leader's leaving, or she's gone  
Although they're not that bad!

If no-one else comes forward,  
their units will close down,  
No weekly meetings to enjoy,  
nor outings up to town.

They'll miss the games they love to  
play,  
and all the things they learn,  
And as for younger sisters  
They'll never get a turn.

No special skills are needed,  
Just time and patience too,  
And there's a really friendly District  
team  
To show you what to do.

"But where have all the Guider's  
gone?"

I'm sure you'll want to know,  
"Those maiden aunts and dear old folk  
Who did it years ago?"

Those people aren't around these days  
Its down to you and me,  
To give our time, make lots of friends  
And help the youngsters too.

It's all too easy just to sit  
And hope for someone new  
But Guides and Brownies now are run  
By people just like you!

**We are looking for leaders to help with Rainbow, Brownies and Guide units in Sibley.**

**If you are aged between 18 and 65 and you would like to know more about helping with these units, we would love to hear from you.**

- Full training and support will be given to all new leaders.
- Becoming a leader not only helps the girls but also opens up a world of friendship and new experiences for yourself!!

Contact Norma Lovett on 01509 813901 or Chris Britchford on 01509 813081 for a chat - no strings attached.

**Girl Guiding UK - Surpr!se yourself**

# Sileby Tae-kwon-do Club

**T**he Sileby Tae-kwon-do club has gone from strength to strength since it opened in October 2001. The club has been through two United Martial Arts gradings and has performed amazingly, producing a high amount of double promotions in both. Tae-kwon-do is a scientific martial art, developed in Korea for use in the military.

Since its' birth, Tae-kwon-do has been practised by thousands and undergone varying qualities of development. The United Martial Arts practice traditional Tae-kwon-do and trains using traditional methods.

Practicing Tae-kwon-do helps to improve fitness and suppleness whilst developing mental awareness and combat skills.

**The club trains on Wednesday evenings 7.00pm to 8.15pm (beginners) and Tuesday evenings for people aged 16 years and over from 7.00pm to 8.30pm.**

**Lessons cost £2.00 under 16 and £3.00 over 16.**

**For more details, call your instructor, Alex Andrews on- 07764 756 336**



## The Buffaloes Are On The Charge

Do you know the difference between "house" and a "line"? Even if you don't, then it doesn't matter. The Buffaloes Charnwood Lodge wants you help raising money for their chosen charity, which this year is the Sileby Guides.

They put on a bingo night the second Tuesday of every month and with a chance to win money as well as a raffle all are welcome. The bingo and raffle are held in the Lounge Room of the Sileby Working Man's Club.

The next event is on November 12th and it kicks off at 9:00pm. All are welcome to attend.

# WINTER WORDS OF WISDOM

**N**ow that summer is with us, the winter seems a long way away. But now is the time to be planning for a healthy winter. October is the time for having a Flu jab to help prevent a bout of influenza. If you have a heart problem, suffer from

Diabetes, have a chronic chest condition, kidney problems or your immune system is affected or you are over 65 years of age, then a Flu jab is recommended.

Your surgery may send for you automatically by letter. If this does not happen then contact them in October to see if you are eligible. Have a happy, Bug Free winter!

Jean Bates. Practice Nurse. Highgate Medical Centre. 5, Storer Close. Sibley.

---

## Please help to find Sid

On Friday July 19th Sid, a tortoise, went missing from his Ratcliffe Road home. Missing presumed stolen, as he was left basking in his pen in the back garden. The large 30 year old tortoise has been with the family since he was a baby and is very friendly. He loves the company of humans and his favourite foods are lettuce, cucumber and tomatoes.

Swift on his feet and not adverse to nipping toes and ramraiding shoes Sid is quite a character and very much missed by his owners who are appealing for his safe return.

*If you have any information regarding his disappearance please contact Patrick on 01509 815928 or the Police on 0116 222 2222*

---

## Calling all Older People

### Active Lifestyle

Older people may be interested in attending the gentle exercise class which is held at Dudley Court on Tuesdays at 10.30am It is run by qualified staff and is both beneficial and fun. No need to call anyone, just come along.

### Sibley Evergreen Club

New members of 50 years plus would be very welcome to enjoy a game of whist or bingo. Meetings are on Wednesdays and Fridays at 2.15pm in the Village Institute. No need to call anyone, just come along.

**Senior Citizens' Lunches are available at the Free Trade Inn on Wednesday at 12.30**

# SILEBY LIBRARY CLOSURE

As part of Leicestershire County Council's plans to improve library services, Sileby Library will be closing between Monday 2nd September and Monday 18th November for refurbishment.

The library will re-open on Monday 18th November at 2pm, with a new look and two extra PCs, which will help improve the overall service to our customers.

A temporary mobile library service will be provided in the car park behind the old Co-Op, between the following times:

Monday	2:00pm - 5:00pm
Tuesday	10:00pm -12:30pm 2:00pm - 5:00pm
Friday	10:00pm -12:30pm 2:00pm - 5:00pm

Prior to the closure library users will be allowed to borrow up to 18 books and 18 talk-

ing books which will be issued for return after the library re-opens. For all enquiries and renewals during the closure, please contact Syston Library on 0116 260 7877.

## Notes

Library users will be able to use their library cards at all other Leicestershire County Council libraries including:

**Barrow upon Soar Library,**

North St, Barrow upon Soar;

**East Goscote Library,**

Ling Dale, East Goscote;

**Syston Library,**

Upper Church St, Syston and

**Loughborough Library,**

Granby St., Loughborough

*For further details contact:*

*Ann Brine, Syston Library, Upper Church,*

*Syston. Tel 0116 260 7877*

## KINGS FISH BAR

### Now under new management

Following major refurbishment we are now open, and serving a comprehensive range of quality foods including:

**Fish and chips  
Kebabs & Pizzas**

*Free delivery of pizzas in Sileby, Cossington  
and Seagrave when spending over £6.00*

**8 King Street, Sileby tel: 812168**

# SILEBY PARISH COUNCIL

## VILLAGE SIGN AND PRESENTATION OF JUBILEE MEDALS

On Tuesday 2nd July 2002 Mrs Mary Ladkin unveiled the Sileby Village Sign, which she had donated in memory of her husband Paul who died in 2000. The sign is situated on Martin's Walk and was designed by Kajoli Gokarn and created by Glyn Mould, a woodcarver from Peterborough.

A plaque is to be erected by Sileby Parish Council in memory of Paul Ladkin. The Chairman of Sileby Parish Council,

Councillor Mrs Crick and members of the Parish Council attended the unveiling together with local residents who had been nominated to receive a Queen's Jubilee Medal and Certificate for voluntary services to the village. Following the unveiling, Councillor Mrs Crick presented the medals and certificates in the Community Centre. Afterwards everyone enjoyed refreshments which included a Jubilee Cake.

### Residents presented with medals and certificates were:

<b>Mrs V Hart</b>	<i>Services to Scouts and Guides</i>	<b>Mrs E Gilbert</b>	<i>Services to Townswomen's Guild and Guides</i>
<b>Mr A Hart</b>	<i>Services to Scouts and Guides</i>	<b>Mrs J Gamble</b>	<i>Services to St Mary's Church</i>
<b>Miss G Barber</b>	<i>Services to the Village</i>	<b>Mrs D Harrison</b>	<i>Services to Methodist Church</i>
<b>Mr A Latham</b>	<i>Services to St John Ambulance</i>	<b>Mrs B Knowles</b>	<i>Services to Guides, Brownies and Townswomen's Guild</i>
<b>Mrs L Plume</b>	<i>Services to Sileby Youth Club</i>	<b>Mrs K Machin</b>	<i>Services to Royal British Legion</i>
<b>Mr L Holmes</b>	<i>Oldest inhabitant of Sileby</i>	<b>Mr F Dakin</b>	<i>Services to Sileby Town Football Club/Sileby Town Cricket Club and Evergreen Club</i>
<b>Mrs M Mason</b>	<i>Services to the Village</i>	<b>Mr K Fox</b>	<i>Services to St John Ambulance</i>
<b>Mr K Hetterley</b>	<i>Services to charities in the village</i>	<b>Mr J Healy</b>	<i>Services to Royal British Legion</i>
<b>Mrs S Wells</b>	<i>Services to Scouting</i>		
<b>Mr L G Ward</b>	<i>Services to Sileby Community Centre and Parish Council</i>		

### COST OF VANDALISM ON AREAS UNDER THE RESPONSIBILITY OF SILEBY PARISH COUNCIL FOR MAY/JULY 2002

The cost of vandalism in Sileby is paid from the Parish Council Budget which is part of the Council Tax charges. Therefore everyone in Sileby who pays Council Tax pays for the vandalism.

COST FOR THE ABOVE PERIOD £ 740. 00

---

# SILEBY PHOTOGRAPHIC SOCIETY

---

## PROGRAMME October - November 2002

All Meetings are held at The Village Institute, Cossington Road  
on Mondays 7.45 p.m. for 8.00 p.m. start

- Oct 7 Lecture 'Underground in Derbyshire's Disused Metal Mines' given by John Jones ARPS
- Oct 14 General Meeting to discuss the forthcoming Annual Exhibition followed by Slide Shows from previous Exhibitions
- Oct 21-26 Annual Exhibition judged by Peter Jones ARPS
- Oct 28 Digital Photography teach-in by Colin Machin
- Nov 4 Midland Counties Photographic Federation Portfolio recorded slide lecture
- Nov 11 Three - way Print and Slide Battle with Melton Mowbray and Grantham Photographic Societies -Judge- Trevor Ashby ARPS
- Nov 18 4th Quarterly Competition Judge; Robert Hawkesworth FRPS
- Nov 25 General Meeting followed by a slide show by one of our own members Margaret Hawksworth

**NEW MEMBERS ARE ALWAYS WELCOME**

## ANNUAL EXHIBITION

The Sileby Photographic Society will be holding a week-long Exhibition in October this year from Monday 22nd to Saturday 27th at the Village Institute, Cossington Road. On Monday to Friday it will be open between 7.00 p.m. and 9.30 p.m. and on Saturday between 1.00 p.m. and 6.00 p.m. On display will be many colour and black & white prints by the members together with panels of 6 prints from invited local Societies. There will be the usual competition colour slides from members and

Societies together with our usual themed slide show which this year features The Wreake Valley.

Over the last few years a collection of prints of Old Sileby has been assembled and many of these will be on display. The collection started with copies of some of the late Stanley Wholton's collection but has been supplemented by many more prints of scenes and residents of years ago.

Come and visit us and see if you can recognize someone, maybe even yourself!

---

## Sileby Methodist Church

**W**hy not try a new experience! Every Sunday between 9.15am and 9.55am we invite people of all ages from 1 month to 100 years to pop in and see what we are up to. (Swan Street Entrance). Usual Morning services are at 10.45am, no evening service unless specially announced.

### Organ Recital.

Sileby Methodist School Hall (Swan Street Entrance)

Organ Recital by Nicholas Martin of Measham, on Saturday October 26th at 7.30pm. Tickets are £4.00 and can be obtained from Mrs Hazel Trasler, Telephone 01509 812480

# “QUALITY OF LIFE” LAUNCH

Charnwood Borough Council launched its Sustainability Strategy in August following extensive public consultation. This Strategy is a statement of the Council's contribution to sustainability, sometimes referred to as “Quality of Life” issues. It addresses the economic, social and environmental well-being of the community in a joined-up approach and seeks to meet the needs of the present without compromising the ability of future generations to meet their needs.

The Sustainability Strategy has eleven sections covering all aspects of quality of life from democracy and partnership to transport and access, from education and training to crime and safety, from waste and pollution to health and the local economy and more besides. The Strategy supersedes the Council's Environmental Charter which has defined the Council's stance of green issues since 1992, and reflects recent changes in legislation which favour an integrated approach to these matters.

Much of my work during the last two years has been to develop this Strategy and take it through various internal and external consultation processes. Although these consultations seemed endless at the time, they did improve the document no end and so it was time and money well spent. So now its here, launched and printed, on the web, in the

libraries and with Borough Councillors and Officers and with the Parish Councils. What of it? What changes?

Quality of Life, Sustainability, call it what you will, is a difficult concept to describe and even more difficult to implement. It's one of those “you know it when you see it things”. It's an umbrella term that covers anything which, in the jargon, is to do with the economic, social and environmental well-being of the community preferably in a joined up way. In other words you try not to trade off for example economic improvements for environmental damage or social improvements for reduced economic performance etc. etc. And you try to pull off this difficult stunt without denying future generations their chance. It's not easy. Compromises have to be made. Hopefully, the Sustainability Strategy will help to guide and influence those compromises to the benefit of the Charnwood community as a whole in the months and years to come.

Much of the groundwork which shaped Central Government and hence Local Government thinking on these issues came out of the United Nations Conference on Environment and Development (UNCED) held in Rio de Janeiro in 1992. Here we are ten years later and at the time of writing we seem to be arguing the toss as to whether the Environment Minister should attend the Johannesburg Conference and can we outdo each other by sending the smallest possible delegation. We have a million miles to go with this but poor people around the world live daily with the consequences of failing to get to grips with these issues. Economic migration



and erratic weather patterns are two ways in which the lack of sustainability makes itself felt in the developed world.

These challenges are huge, amongst the biggest which we confront and they do seem daunting. But our own impact on the environment begins where we are, where we live, work and play starting right here in Sibleby. There's a whole string of things that each and every one of us can do to bring about change. Here's just a few examples to think about. Treat yourself to some Fair Trade tea, coffee, chocolate, bananas etc, check out Give As You Earn and get Gordon Brown to donate a bit extra to your chosen cause, use the bus once a week and let someone else have the stress of driving, make sure your car is well

serviced and adjusted so that it isn't polluting unnecessarily, recycle more and recycle better, get your house well insulated and draught proofed and get your boiler serviced before the heating season, build or buy a home-composter or sort out that unproductive heap down the garden. The list is endless. Lots of things you can do will save you money or add diversity to your life. Just start somewhere, anywhere, it doesn't matter. Any one of us can make a difference and if we fail to do so we risk handing back the planet in worse shape than it was given to us at a time when we can do more than any previous generation. In the words of Chief Seathl "We do not inherit the earth from our ancestors, we borrow it from our children".

**For further information on the Sustainability Strategy see the Council's web site [www.charnwoodbc.gov.uk](http://www.charnwoodbc.gov.uk) or contact Environmental Co-ordinator, David Cannon on (01509) 634901 or email [policy.unit@charnwoodbc.gov.uk](mailto:policy.unit@charnwoodbc.gov.uk).**



*Separation of recyclables and refuse brings a wide range of environmental and other benefits – reductions in use of energy and resources, landfill, transport, vehicle wear, creation of sustainable employment ...*

# Liquorice

Toys  
Stationery  
Selection of cards  
Candles  
Gifts

So come and look and there  
may be even more

1 High Street, Sileby, Leics.

Tel: (01509) 814985

# MARTIN HILL ELECTRICAL

Domestic  
Commercial  
Industrial  
Portable Appliance  
Testing

112 CHARLES STREET, SILEBY

Tel: (01509) 816143

Mobile: 07850 103677



*D. Parker*

**PAINTER &  
DECORATOR**

**62 SEAGRAVE ROAD  
SILEBY**

**Tel (01509) 814916**

# B. YATES & SON

Plumbing, Heating  
& Gas Services

Bathrooms  
& Showers

CORGI registered

Tel: 01509 812382

Mobile: 078088 30697



# SPORTS NEWS

## SILEBY TOWN CRICKET CLUB

Clubhouse & Ground:

Mill Lane, Sileby,

Leicestershire.

Website: [www.silebytown.co.uk](http://www.silebytown.co.uk)

### HOW HEALTHY IS YOUR CRICKET CLUB?

Just as a tree can only flourish if its roots are healthy, then the same is true of a cricket club, and I am pleased to say that Sileby Town Cricket Club is incredible healthy as its roots have never been better. By its roots I am referring to our remarkable junior section.

The volunteer managers and coaches look after 60 to 70 juniors which form two teams of youngsters under the age of 10 years old who play Kwik Cricket, the starting point for some of our top internationals, who play in teams of eight with a plastic bat and ball. Everyone is involved. One team at the next age group of under 11's, these play Incrediball using proper kit but with a soft ball. There is also one team at each of the other age groups, who all use proper kit, are under 13's, under 15's and under 17's.

What is remarkable this year is the amount of juniors at this small village club being asked to represent their county, Leicestershire, at their respective age groups. Sileby has two players in the county under 9 age group, not only playing with a proper hard ball but playing 30 overs a side, they are Daryl Hands a truly gifted left handed batsman, and Andrew Kenneth, a fast bowler who can bowl straight. The county have also selected one of our under 10's, Michael Ruddle, a genuine all rounder,

he is a confident cricketer who is keen to learn and loves to bowl and field as well as bat.

At the under 11 age group Liam Kinch has caught the county selectors eye again and has retains his place for a second year. Liam is also another good exciting all rounder. Charles Kindleysides a new player to the club this year, has progressed rapidly into the district squad as a batsman, and will surely be pushing for a full county place next year.

Narrowly missing out at under 13 full county honours is Phil Hackett, but he has made the district squad, which is the reserve team for the county, and with a full winters coaching ahead, will be knocking on the door next year as a fast bowler.

Under 15's this year is not as strong as previous years, but again there is a player, Tom Marriott who has got through to the district squad. Tom could probably have made the full county squad had he not been so good at other sports including football and tennis, a true all round sportsman.

The top junior age group at Sileby Town is the under 17's. All of our under 17's also play senior cricket in the men's teams and do the club proud, whether it is in the 4th XI, 3rd XI, 2nd XI, or 1st XI. Lee Medcroft and Phillip Chamberlain are full county under 17 players, and a third player, Matt Ellis has like Charles

and Tom narrowly missed out this year, as the county this year have an embarrassment of riches in the fast bowling department. These three, all fantastic bowlers, play in the 1st XI, opposing sides often complementing them by suggesting that they are the best trio of fast bowlers in the league.

Lee Medcroft a lad that only started cricket at the age of 14 has taken the club into new territory. He is now playing for the county at under 17 in two day matches, also in board XI games, and full Leicestershire 2nd XI cricket, and has this month answered the call to play for ENGLAND at under 17 level. Not bad for a small VILLAGE cricket club, Who

competes against town and city sides who have more resources than we do.

If you or anyone in your family would like to play cricket, please contact Richard James at the ground (most nights), or telephone 01509-812169. Also to keep producing this quaff of players, if anyone would like to help Sileby Town in any way please contact Richard James, maybe as a volunteer running a side, or with much needed finances through sponsorship.

A tribute to Sileby Town juniors.

Written by Richard James. (Head Coach and Junior Manager)

5th July, 2002

---

# Sileby Tennis Club

Christine Thompson  
For Sileby Tennis Club

---

## Tennis in Sileby is on the up!

We now have a Junior Team to represent the village in the Leicestershire League Barry Rees Shield and the Fallows Cup. The Juniors have had an excellent first season by winning four of their ten matches, under the leadership of Liz Copson.

During the Spring and Summer Holidays, numerous coaching courses have been held at the four All - Weather courts. Also during the Holiday, Liz has organised friendly matches, Fun Tennis and the Sileby Championships, culminating in a

Parent and Child Tournament and Presentation Afternoon in September.

There are now over seventy children playing tennis from Sileby and the surrounding villages from the age of seven to sixteen.

Which leads us to the Adults. The Club plays two ladies, two mens and one mixed team in the Summer Leicestershire League, and two ladies and one mens team in the Winter league. There are over sixty adults playing tennis not only on Monday and Wednesday evenings and Sunday afternoons, which are organised Club events, but most other evenings as well.

The adults also have their own Club Championships, with Finals Day being in September.

Play does not end then, as Sunday afternoons are still well attended all through the winter.

The club will end the year with the Annual Dinner and Presentation Evening in November.

To welcome in 2003, a special New Year Tournament is arranged with wine and mince pies.

# The Aussie in Sileby

Leicestershire County Cricket Club is not the only club in the county to boast a star Antipodean cricketer.

Sileby Town Cricket Club has it's own Australian Batting Star, Ben Cavey.

Born in Mordialloc, Melbourne, Victoria, Australia in 1971, ben played for Dingley, Brighton, Victoria and Old Mentions before coming to England to play for Sileby in 1999, where, apart from a short spell in London, he has lived ever since.

He works in Leicester as a Geotechnical Engineer, designing foundations for housing developments and performing

contamination risk assessment for human health and groundwater.

In his leisure time, he can often be found in best Australian tradition behind a pint in the Free Trade Inn, but it is his success on the cricket field for which he is best known.

During the season he scored 950 runs including 4 hundreds, a 98 not out and 3 other scores over 50. A record for Sileby Town C.C.

Good on yer Cobber.

Ken Jones

## VISITING PRACTICE

*Julie Tolton*  
MSSCh MBChA

## CHIROPODY, REFLEXOLOGY

*Visits to surrounding areas*



**36 Kendal Road  
Sileby  
Leicester  
LE12 7PF**

Phone: 01509 815390

Mobile: 07050 137294

## GLYNNE WILDBORE DOMESTIC APPLIANCE REPAIRS



### FULLY QUALIFIED LOCAL ENGINEER

*over 20 years experience  
Repairs & Servicing in  
your own home to most  
makes of Washing  
Machines, Tumble Dryers,  
Cookers, Fridges,  
Freezers, Vacuums,  
Microwaves, etc.*

- NO CALL OUT CHARGE
- REALISTIC PRICES
- ALL WORK GUARANTEED
- SPECIAL OAP RATES

Tel: Leicester  
260 9773

Mobile:  
07850 733 050

*For a reliable and friendly  
service*

## A1 PLASTERING

74 BARROW ROAD, SILEBY  
LOUGHBOROUGH LE12 7LP

For plastering/ceramic tiling.

Fibrous plaster moulding  
supplied and fitted.



Exterior rendering and  
Tyrolean finishes.



Fully insured/Free estimates  
30 years experience

**Tel: (01509) 814711**

## MARK C. WALTON ELECTRICIAN

Faults and Repairs  
Installations  
Industrial and Domestic  
Portable Appliance Testing

**71 BARROW ROAD  
SILEBY, LEICESTERSHIRE**

**(01509) 813201**

**(07870) 525748**

*Serving Leicestershire  
and Rutland*

[www.connect-cars.co.uk](http://www.connect-cars.co.uk)

# CONNECT CARS

## YOUR LOCAL TAXI FIRM

*Thinking of going on holiday? Need a taxi to the airport/station?*

**THEN PHONE US FOR A QUOTE !**

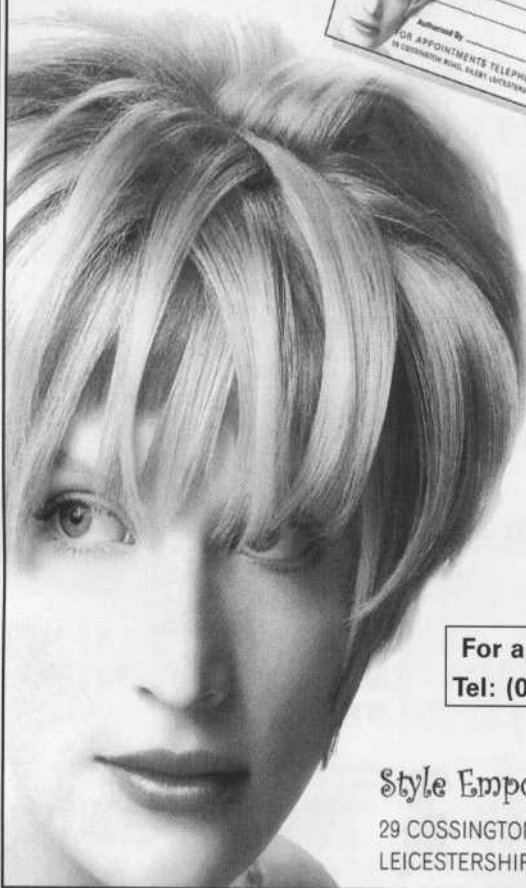
eg EAST MIDLANDS £18.00 / £36.00 RETURN  
BIRMINGHAM £38.00 / £76.00 RETURN  
HEATHROW £85.00 / £170.00 RETURN

**Also providing a local service in North Leicestershire**

*6-seater air conditioned cars available - For a prompt, friendly, personal service*

**Tel: (01509) 814053**

# GIFT VOUCHERS AVAILABLE



For appointments  
Tel: (01509) 815800

Style Emporium

29 COSSINGTON ROAD, SILEBY,  
LEICESTERSHIRE LE12 7RW

Style Emporium

# HETTERLEYS

## ESTATE AGENTS



**OUR LOW OVERHEADS MEAN  
LOWER FEES,  
SIMPLE MATHEMATICS**

**IN A BOUYANT SALES MARKET, WHY PAY  
OTHER AGENTS FAR HIGHER FEES?**

**Fixed & fully inclusive sales fees:**

**£595.00 / Sale price up to £100,000**

**£795.00 / Sale price up to £150,000**

**£895.00 / Sale price up to £200,000**

**£200,000 plus, fee of 0.6%**

**All fees subject to VAT**

**FEES INCLUDE:**

**ECHO ADVERTISING, DIGITAL PHOTOGRAPHY  
INTERNET ADVERTISING, ESCORTED VIEWINGS  
and a NO SALE, NO FEE POLICY**

**12A HIGH STREET, SILEBY, LEICESTERSHIRE, LE12 7RX**

**TEL (01509) 815900**

**& 11 HIGH STREET, QUORN, LEICESTERSHIRE, LE12 8DS**

**TEL (01509) 413542**