

# talk @ Sileby

VILLAGE NEWSLETTER

ISSUE 6 DECEMBER 2002



## Sandiccliffe Motor Group

More than 50 years serving the East Midlands  
Still Family Owned, Still The Same Family Values  
Find out more Inside.

# Christmas Message

Dear Friends

*It is hard to believe that I am preparing to celebrate my third Christmas here in Sibley.*

*I love this time of the year – I love seeing the excitement on the faces of children (and on many adults too). I love the giving and receiving of presents, I love the parties, I love seeing and hearing from friends and family whom I haven't seen for a long time. It is a very special time.*

*Along with all the celebrations Christmas is a time when we think about and befriend those who find it difficult to celebrate – those who have lost loved ones, those who have no family, those who have no home. Who can we be with this Christmas?*

*At the heart of Christmas is a message of love, joy and peace. At the heart of Christmas is Jesus. One of the names of Jesus is 'Immanuel' which means 'God with us'. The nativity story began over 2,000 years ago but it is one, which is just as relevant today as it was then. God is with us today and can be experienced in a very real way. He is the greatest gift any of us can receive.*

*As I was thinking about what to say in this message I came across a story which was written by a six and a half year old boy. I have copied it as he wrote it but the message speaks for itself.*

*'wants- a pan-a-time their livd a man named santaclaus. And he had a jabe. His jabe wase ever Christmas. He went down to the site and gove Everyone a presat, and new I will tell you about the riel stouri of Christmas. Ther whas a Man named Josaf. And wimin named mary. And mary hade a baby named Jesus. and the baby Jesus grue up and loved us and hase loved us and will love us.'*

*I would like to close by wishing you all a very happy and peaceful Christmas.*

*With love*

*Jane Carter, Methodist Minister*

# Sandicliffe

## *Still A Family Owned Company*

Hello everybody, my name is Reg Tutt, I am Managing Director for Sandicliffe Motor Group.

It gives me great pleasure to have the opportunity to introduce you to the company I work for and bring to your attention many items, which you may not know.

Sandicliffe Garage was founded in 1948 by Mr J R Woodhouse and Mr T H Barton as a Service Station on the Nottingham Road, Stapleford. The company became Ford Retail Dealers in 1953, by 1955 were appointed Ford Car and Commercial Vehicle Distributors.

Sandicliffe has expanded into a major Ford Distribution Group with dealerships in Leicestershire and Nottinghamshire, and is still family owned.

Central to our growth has been constantly offering the highest level of customer care, this is reflected in the number of awards that have been presented to the company over the years from both Ford Motor Company and the Royal Charter from Her Majesty Queen Elizabeth II.

As the company has grown we have begun to support the Leicestershire and Nottinghamshire communities including the Princes Trust, Nottingham Fire & Rescue Secure Homes Initiative, Promoting Environmental Concerns with Ikea and recently supporting local female hockey players to train and take part in the Hockey World Cup in Perth with the National Team. These are all community issues that could affect the well being of any one of us.

Even though Sandicliffe have achieved great things the working day at every branch begins with the mail being read by a family director to ensure that the high standards which the group is built upon remain consistent.

Consistency, Quality and Customer Care is what the Sandicliffe brand stands for.

Wishing you and your families a very Merry Christmas and a Happy New Year.

Sincerely yours

Reg Tutt.



*Anthony W. Parker*

*CITY & QUEENS*

Email: [anthony.parker@creativeimages.fsnet.co.uk](mailto:anthony.parker@creativeimages.fsnet.co.uk)

[www.creativeimages.fsnet.co.uk](http://www.creativeimages.fsnet.co.uk)

CHILDRENS, PETS & WILDLIFE PHOTOGRAPHY. DIGITAL REPAIR & MANIPULATION.

92 King Street, Sileby, Loughborough, Leics. LE12 7NA Tel/Fax 01509 815145

## PORTRAIT STUDIO HOME PORTRAITS

FUJI PRO-TEK PROCESSING LAB.

DIGITAL IMAGERY LAB. PHOTO REPAIRS

ENLARGEMENTS FROM NEGS & CD's

PHOTO TO PHOTO PHOTO TO CD's

Repair and enhancement of old photo's

Image manipulation Photo makeovers

PHOTO KABIN for the sale of Films, Media paper

Video Tapes, Audio cassettes, Cam-Corder tapes,

CD's, Albums, Slip in mounts and much more

**ALL AT DISCOUNT PRICES. FREE COFFEE.**

# [www.acmemodels.com](http://www.acmemodels.com)



### Opening Times

Wed - Fri 10:30 to 4:00 (Thurs. 7:00)

Sat 10:00 - 5:00, Sun 10:00 - 12:00

Stockist of Hornby, PECO  
Bachmann, Farish, Ratio, Wills  
Gaugemaster, plus full scenic materials.

'O' & 'G1' British Outline Kits/RTR

**Modelling advice & friendly Service. Please come and see us!**

**Stockist of LGB (Indoor/Garden Railways). Superb Quality and Great Fun!**

Please browse the web for full details, Free Sales/Wants  
Service, Notice Board, Associations and Exhib/Smeet Diary

**The Railway Shop  
48, Highgate Road**

**Sileby, Leicester LE12 7PP**

**Tel/Fax: 01509 812177**

**Alt. Fax: 01664 424614**

**Mail Order Visa Barclaycard**

**email: [martin@acmemodels.co.uk](mailto:martin@acmemodels.co.uk)**

Always wanted Good quality used  
items, any gauge, any amount.  
Exchanges in any gauges welcomed.

Large stocks of second-  
hand from 'N' to 'G1'

**Now Stocking  
Balsa Wood**

# Welcome to the New Residents



**A**s you will all know Roecliffe Manor closed down recently and the residents have moved into smaller units in the midst of local communities. Sileby has been given the privilege of hosting one of these units. **talk@Sileby**

would like to say a very big welcome to all the new residents. For our December issue one of the residents, June Raymond, has very kindly sent us two poems that gives us an insight into the changes that have happened in her life in the last few months.

## Farewell to Roecliffe

So Roecliffe is closing down ah! How sad  
I must admit the news is very bad  
We will miss the grounds, the scenic view  
The comradeship, yes! We'll miss that too  
We'll miss the help we've had over the years  
All the frowns and all the tears  
Thank you staff, for all your caring  
For all the jokes we've been sharing  
We'll miss the laughing and shouting down the hall  
Still, we have had fun, we've really had a ball  
So let's go out with all guns blazing  
These new homes might be amazing  
Remember now, no tears, no fuss  
Please raise your glasses, here's to us!

# Hello Sileby

Hello Sileby! We have landed  
We in wheelchairs sometimes feel stranded  
Our new home is built in imposing yellow brick  
It makes a change, it does the trick  
The doctor's surgery is not very far away  
It is a ten minutes walk anyway  
The local church sent us a note  
Welcome to our community, is what they wrote  
We have a talking lift  
It's amazing, it's a gift  
The bathroom has a very large gleaming bath  
It's electronically operated, that will be a laugh  
All the passages are carpeted  
I am thankful that it's not in red  
We have two offices and a functions room  
So all of these will be a boon  
There are computers and photo copying machine  
We are well equipped, so it would seem  
Most of the furniture is out of this world  
Our approval banners are unfurled  
The spacious dining room has a kitchen combined  
Specially designed with us in mind  
All the bedrooms have a toilet, shower and sink  
That is a great improvement we all think  
All the bedrooms have an overhead hoist  
This will be very helpful to all the carers  
So let us all rejoice  
We all have fond memories of Roecliffe Manor  
Which no doubt we hold most dear  
I feel sure we will be just as happy here

By June Raymond

# SILEBY PARISH COUNCIL

---

## Christmas Lights 6th December 2002

The Sileby Christmas Lights were switched on in Martins Walk on 6th December. Coffee and Mince Pies were served afterwards in the

Community Centre. A Victorian Market was held in the Sports Hall with local organisations using the stalls to raise funds for their own groups.

The Parish Council Chairman Mrs Betty Crick has chosen the Sileby branch of the Royal British Legion as her charity for 2002/2003.

---

## New Parish Council Office hours

From 1st January 2003 the Parish Council Office will only be open to the public between 10.00am and 12 noon Monday to Friday. To contact the Clerk or her assistant out of these hours please telephone 01509 813075. Following the resignation of the assistant to the Clerk, Mr Ian Daniels, Mrs Kerstie Frost has been appointed to the position.

## Mayor of Charnwood – Away day visit to Sileby 23rd January 2003

Sileby Parish Council is please to be hosting a visit by the Mayor of Charnwood, Councillor Debbie Green, who will meet with local people in their businesses, schools and homes. An itinerary is being prepared to give the Mayor an insight into the Village life of Sileby. A report on the visit will be in the next issue of **talk@Sileby**.

---

## Cost of Vandalism on areas under the responsibility of Sileby Parish Council August to October 2002

The cost of vandalism is paid from the Parish Council Budget, which is part of the Council Tax charges. Therefore everyone in Sileby who pays Council Tax pays for the vandalism

**VANDALISM COSTS AUGUST TO OCTOBER      £730.00**



# Remember!

## Bus and Train Services

Any problems relating to timekeeping and reliability of the Bus and Train Services can be passed to the operator via the parish council office telephone 813075. The parish council collects all complaints on this subject.

---

### Offical Queens Golden Jubilee Medals

A reminder that these medals are available to any child born to parents residing in Sileby. The medals are available during 2002 from Sileby Parish Council.

*Call the Parish Clerk on 816545 to register the child's name.*



#### Opening Times

Tues. 9-3 Wed. 9-3

Thurs. 9-8 Fri. 9-8

Sat 9-2

Hairdressing, waxing, eye lash tinting, fascicle makeovers, ear piercing, sun beds and lots more.

Plus Nails-To-Go will be doing manicures and nail extensions so book in for all your nail treatment.

## 01509 815712



# CRIMESTOPPERS

Have you seen something suspicious, but do not wish to become involved?

There are many people like yourself and they telephone

In the North Policing Area (based at Loughborough) there were 113 calls during the first five months of 2002 which resulted in 28 arrests!

## CRIMESTOPPERS

The anonymous **CRIMESTOPPERS** hotline is

**0800 555111**

## YOU COULD RECEIVE A REWARD

Please remember to telephone **CRIMESTOPPERS** with any information regarding a crime

# CRIMESTOPPERS

## MARK C. WALTON ELECTRICIAN

Faults and Repairs  
Installations  
Industrial and Domestic  
Portable Appliance Testing

**71 BARROW ROAD  
SILEBY, LEICESTERSHIRE**

**(01509) 813201**

**(07870) 525748**

*Serving Leicestershire  
and Rutland*

## A1 PLASTERING

74 BARROW ROAD, SILEBY  
LOUGHBOROUGH LE12 7LP

For plastering/ceramic tiling.

Fibrous plaster moulding  
supplied and fitted.



Exterior rendering and  
Tyrolean finishes.



Fully insured/Free estimates  
30 years experience

**Tel: (01509) 814711**

# SILEBY PHOTOGRAPHIC SOCIETY

The 48th Annual Exhibition held in the Village Institute, Cossington Road, between the 21st and 26th October was the most successful for a number of years. The increase in visitors may have been due to local residents reading about the Exhibition in the last issue of this publication.

During the week the slide show 'Through the Wreake Valley' proved popular, as was the competition to identify places in the valley, which was won by Audrey Platts of 75 Homefield Road with 22 correct answers out of 24.

Particular interest was shown in the 130 pictures of Old Sileby scenes with several enquiries made for reprints. The whole collection numbering in excess of 200 pictures continues to grow with the addition of material gained at the Exhibition. As well as local scenes, some about 100 years old, there are many pictures of residents. One gap that I would like to fill is a picture of Albert Gretton, coal merchant and village character of half a century ago. Can anyone help?

## Forthcoming programme

All meetings held at The Village Institute on Mondays, 7.45pm for 8.00pm start

Dec	9	Slide show by Nigel Atkinson - 'Mexico - Baja California's Friendly Whales and Wildlife of the Seychelles'
Dec	16	Short displays by Members
Jan	6	Annual Competition for Colour Slides, Colour Prints and Black & White Prints
Jan	13	A slide show by Val Williams - 'Mustelids Family'
Jan	20	49th Annual Dinner at The Cedars Hotel, Loughborough
Jan	27	A recorded Nature Slide Show by The Royal Photographic Society
Feb	3	An evening with one of our Members - David Putt
Feb	10	Bruce and Annie MacCormick of Rothwell present a slide show 'To Hell with Millionaires'
Feb	24	First Round of our Quarterly Competition judged by Mike Sherwood
Mar	3	General Meeting followed by a short display by Barbara and Harry Robinson
Mar	10	Peter Crichton presents 'Saudi Arabian Experience'
Mar	17	Social Evening - Skittles night
Mar	24	Members Slide Battle judged by Malcolm Cook of Syston



# Churches in Sileby

## December Services



### St Gregory's Roman Catholic Church, Sileby

#### Tuesday December 24th

8.30pm Carols – Syston

9.00pm Mass – Syston

#### Wednesday December 25th

9.00am Mass – Sileby

11.00am Mass – Syston

### St Mary's Sileby, All Saint's Cossington, All Saints Seagrave.

Would love you to celebrate Christmas with them!

#### Services for Christmas

#### Sunday 22nd December

10.30am All Age Communion Service  
(Seagrave)

5.00pm Service of Lessons & Carols  
(Seagrave)

6.30pm Advent Evening Worship (Sileby)

7.00pm Service of Lessons & Carols  
(Cossington)

#### Christmas Eve Tuesday, 24th December

4.00pm Family Carols (Sileby)

6.30pm Carols by Candlelight (Sileby)

11.30pm Midnight Communion (Sileby)

#### Christmas Day Wednesday 25th December

9.00am Holy Communion (Seagrave)

9.00am Holy Communion (Sileby)

9.00am Christmas Praise (Cossington)

10.30am Family Service (Sileby)

#### Sunday 29th December

10.30am Benefice Communion (Sileby)

### Methodist Church Sileby

During ADVENT there will be a United Churches short meditative Service for Advent followed by a light lunch of soup and bread. This will be for 3 weeks commencing on Thursday 5th December. Why not join them for an hour of peace and reflection during this busy time and recharge your batteries.

Services for the Christmas period are:-

#### December 16th - Ladies Circle Carol Service.

The Mayor of Charnwood, Councillor Debbie Green, has kindly agreed to join us for this service on behalf of the National Children's Homes. Service commences at 7.30pm

#### December 22nd

10.45am – Family Service

4.00pm – Carol Service

#### December 25th

9.30am – United service at  
Wymeswold

(contact Jane or Brenda 813762 if you require a lift)

#### December 29th

10.45am – Morning Service (no  
'Arise')

*Note: Don't forget the Methodist church in Sileby has a large hall, which is available to hire with Kitchen, ideal for Children's parties.*

*Phone 814446 and ask for Mr Healey for information*

# St Gregory's Roman Catholic Church

**F**ather Anthony Patemen now has the responsibility of Syston RC Parish in addition to St Gregory's, Sileby. He has now moved to live in the presbytery at Syston. Anyone wishing to contact him can ring 0116 260 8476.

The new social centre is well on schedule and more news on its progress will be given in the next addition of **talk@Sileby**.

We would also like to welcome Father Peter Tierney a retired priest who has come to live in the presbytery in Sileby.

*Calling all you 14-16  
year olds out there!*

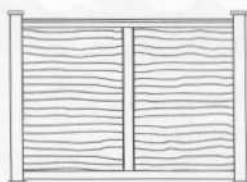
Did you know that there's an 'Explorer Scouts' group held in Mountsorrel? It's held on Monday evenings and it's packed full of exciting activities! My son goes to it and he would like to recommend it.

## For further details contact:

Peter Stuart on:  
01530 460730 or  
e-mail him at P.Stuart1@ntlworld.com  
or by 'snail mail' address at:  
13 Ibstock Road, Ellistown, Leicester  
LEE67 1ED  
*(I'm giving our Peter Stuart's contacts  
with his permission)*

M. McDowell

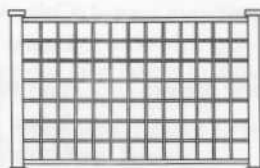
## **TJN GARDEN MAINTENANCE** **ALL FENCING SUPPLIED & ERECTED**



**OVERLAP**



**CLOSEBOARD**



**TRELLIS**

- Block Paving • Gravelling • Slabbing •
- Garden Clearance •

Call Tony Neal on

**Tel: 0771 2171016 or 01509 815467**

# Sileby Imperial Silver Band



SILEBY IMPERIAL SILVER BAND.

*From left to right:*

**Back Row:** 1. Cecil Lewin, 2. Ralph Blower, 3. Ted Middleton, 4. Tom Blower, 5. ?, 6? Gradwell, 7. Arthur Freestone, 8. ?, 9. George Harry Toone

**Middle Row:** 1. George Marston, 2. Harold Wallin, 3. George Blower, 4. Colin Ward, 5. Bill Yates, 6. Aaron Betts, 7. Fred Blower, 8. Ernest Yates, 9. Tommy Smith, 10. Wilf Beardsmore

**Front Row:** 1. Sam Freer, 2. Gerard Walker, 3. Billy Iliffe (conductor), 4. Arthur Newbold, 5. Billy Clarke, 6. Fred Dakin, 7. Arthur Smith, 8. Harry Betts

**Lying Down:** Alfred Henson

The Sileby Village Institute was originally a First World War army canteen before being re-erected in the village. For many years the War Memorial stood in front and the remains of the base can still be seen. Amongst the fundraising activities to pay for the building were dances to music provided by the Sileby Imperial Silver Band. Many of the players in the picture have been identified but do you know any of the missing names?. If so please let us know.

*The Sileby Imperial Silver Prize Band  
request the pleasure of the  
Company of*

*M*

*at a Supper to be held at  
The Village Institute, Sileby,  
on Monday, March 12th, 1923, at 8 p.m.*

R.S.V.P. to J. W. BEADSMOORE, 87, King Street, Sileby.

*I shall be able to attend Supper on March 12th.*

*An invitation card from 1923*

# B. YATES & SON

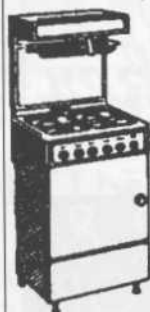
Plumbing, Heating  
& Gas Services

Bathrooms  
& Showers

CORGI registered

**Tel: 01509 812382**  
**Mobile: 078088 30697**

## GLYNNE WILDBORE DOMESTIC APPLIANCE REPAIRS



### FULLY QUALIFIED LOCAL ENGINEER

over 20 years experience  
Repairs & Servicing in  
your own home to most  
makes of Washing  
Machines, Tumble Dryers,  
Cookers, Fridges,  
Freezers, Vacuums,  
Microwaves, etc.

- NO CALL OUT  
CHARGE
- REALISTIC PRICES

**Tel: Leicester  
260 9773**

- ALL WORK  
GUARANTEED

**Mobile:  
07850 733 050**

- SPECIAL OAP RATES

*For a reliable and friendly  
service*

## Liquorice

Toys  
Stationery  
Selection of cards  
Candles  
Gifts

So come and look and there  
may be even more

**1 High Street, Sileby, Leics.**

**Tel: (01509) 814985**



**D. Parker**

**PAINTER &  
DECORATOR**

**62 SEAGRAVE ROAD  
SILEBY**

**Tel (01509) 814916**

## A different recipe for Christmas

In Sweden at a traditional coffee party there are seven different kinds of cakes. One of which are the Swedish Dreams. You might like to try these over Christmas when you have friends around to share the festive season.

### Ingredients

250gms wheat Flour  
1 tablespoon of baking powder  
200gm butter or margarine  
125gm sugar  
2-3 teaspoons vanilla sugar  
Decorations  
30 sweet almonds

Scald the Almonds and split them. Put some flour aside for the rolling of the dough. Sift the flour and the baking powder. Melt the butter and let it cool. Add the sugar and the vanilla sugar and stir. Then work in the flour mix. Knead the dough and roll it into small balls and place on greased baking sheets. Press half an almond into every ball. Bake the cakes in the oven at 150 – 200 degrees C, until the almonds are light yellow.





# Protect Your Mobile Phone

**W**ith the increase in mobile phones it has brought with it an increase in crime with over 300 people being robbed of their mobile phones in Leicestershire last year. You may not think that you will be a victim of this type of crime but it only takes a second for someone to steal your phone unless you carry out basic security measures. When you use your phone be alert, be aware of your surroundings, and don't use it

in a crowded area or anywhere you feel unsafe. If you have to use it be discreet.

Use your phone security lock code or pin number.

Mark your phone and battery with your postcode and number of your home.

Register your phone with your operator if you report your phone stolen. The operator should be able to bar the sim card.

Avoid displaying your phone where it is in public view, keep it with you at all times and don't leave it unattended.

Keep a record of your phone 15 digit serial or IMEI number which is unique to each phone find it by keying \*#06# or by looking behind the battery.

If you are a victim of a robbery make sure you contact the police straight away to increase the chance of catching the offenders.

If you have any information about mobile phone related crime contact the Leicestershire Police on 01162 222222 or crime stoppers which is anonymous and free on 0800 555 111.

**PC 544 Steve Rhodes,  
Quorn Police Station  
Voice Mail  
0116 248 5675, 544#**

**Useful Website Links**  
[www.leics.police.uk](http://www.leics.police.uk)



## Andies

Private Hire Ltd

### TAXIS AND

### 8-SEATER MINI-BUS

Airports – Schools – Pubs & Clubs –

Courier Work – Contracted Work

**LONG AND SHORT DISTANCE NO OBJECT**

**Tel: (Mountsorrel) 0116 230 1313**

# Your Letters ...

## Sileby Drivers!

To: The Editor  
**talk@Sileby** village magazine

Dear Madam,

I feel I must put pen to paper regarding a traffic incident that took place last week on the King Street/Barrow Road junction in the village.

As all drivers are aware, this is a blind corner, especially when turning right from King Street and I admit I do not like using it.

However, one afternoon last week I was stationary at the junction and very carefully checking the reflections in a shop window to see if a vehicle was approaching from the left, when a car to the right of mine stopped and waved me on. Not being the trusting sort I edged forward carefully and saw there was a vehicle coming but a quite a way away, I therefore completed the turn. The approaching car suddenly accelerated and almost attached itself to my rear bumper. I stopped my car and made to get out and speak to the 'lady' in the car behind, but she locked all her doors and would not even look at me. I returned to my vehicle and went on my way.

I am a female driver myself and I would not deliberately do that to any

other driver but more importantly where there is a particularly bad junction and drivers are making an effort to assist other motorists, I do wonder about the mentality of the person.

I do have her registration number but she KNOWS who she is. Perhaps she should think a little more about other people, we all pay our road fund licence and being nice to people can sometimes make your day!!!

As a further point, there should be mirrors strategically placed at the junction, I will also be writing to the council regarding this.

Yours faithfully  
(Name and Address supplied)

---

Dear **talk@sileby**

Are the car drivers of Sileby becoming oblivious to the law? As I understand it a double yellow line means that you cannot park there at any time at all - never. Not even to nip out and go to the paper shop. There are selfish people who prefer to break the law instead of walking a few extra yards and parking legally. Why? They must be the same people who pass red traffic lights - it's a good job we haven't any of them in the village.

Yours Denver, Sileby  
(name and address supplied)

# Letters...

## Village Appraisal

The Editor **talk@Sileby**

Dear Madam,

As a newcomer to Sileby village I was both pleased and very surprised to receive a copy of the village appraisal. What a lovely idea! Obviously a great deal of time effort and money has gone into this document. It is, therefore, most important that the information gained from the survey and used in the report is taken further so that the villagers may gain from their own suggestions.

This could be a very exciting time for the village providing members of the community are prepared to 'do their bit'. Sadly, the best of plans can be forgotten due to lack of interest. I do hope that this is not the case here.

Good Luck to everyone involved!

Kind regards

Kate Skillett

138 Homefield Road,  
Sileby, Loughborough  
Leicestershire, LE12 7TQ

### VISITING PRACTICE

*Julie Tolton*

MSSCh MBChA

### CHIROPODY, REFLEXOLOGY

*Visits to surrounding areas*



**36 Kendal Road**

**Sileby**

**Leicester**

**LE12 7PF**

Phone: 01509 815390

Mobile: 07050 137294

## SILEBY PET SUPPLIES

71 KING STREET  
SILEBY, LEICESTERSHIRE

**Tel: 01509 812908**

Large selection of pet food,  
treats and accessories

Fishing Bait and Tackle

Home Brewing Kits

Agents for Burns dog and cat food



**FREE local  
delivery on  
orders over £5**



# WHO ARE THE BUFFS?

The correct title is The Royal Antediluvian Order of Buffaloes.

## **An Introduction to Buffaloism**

The Royal Antediluvian Order of Buffaloes is an Organisation, which is active, not only in its local community, but all over the world. It is non-political, organisation and does not look to religion to inspire participation. It does, however, inspire members to commit to a Peaceful and meaningful way of life.

The R.A.O.B. at all levels support its community and through its charitable works raise many millions of pounds for many worthwhile causes, chosen by the membership locally, regionally or nationally.

## **The Royal Antediluvian Order of Buffaloes**

Is quite a mouthful so they are called Buffs for short.

The Buffs are a group of men that get together every week and their main aim is to raise as much money as they can for their nominated charity.

## **Where do they meet?**

They meet at what they call a Lodge.

Each Lodge has a name. The Lodge in Sileby is called "The City of Charnwood Lodge". They meet at The Sileby Working Men's Club each Tuesday. Although this is a small Lodge they still try and raise as much money as they can.

This years-nominated charity is The Girl Guides of Sileby.

If anyone would like to know more about us just come down and talk to us. We don't bite!

## **THE PRESENTATION OF THE MONEY RAISED FOR THIS YEARS CHARITY**

This will be made on Tuesday 17 December at the Sileby Working Mens Club. There will also be entertainment and food laid on. Everyone is welcome. The fun starts at 8pm.

# What does Christmas mean to us?



*The children of Highgate School have  
been thinking about what Christmas  
feels like*

- ❧ My Mums smile
- ❧ Eating too much and Dad falling asleep
- ❧ The Christmas Tree smell in the morning when you come downstairs
- ❧ Turning the Sileby lights on
- ❧ Trying to guess what's in the sack
- ❧ Looking for Santa on Christmas Eve
- ❧ Singing Carols in the Church
- ❧ Giving my sister her present
- ❧ Pulling crackers with my Gran
- ❧ Waking Mum and Dad up early
- ❧ Helping my baby brother open his first Christmas present
- ❧ All the coloured lights in the windows down our street
- ❧ My Dad trying to get mum under the mistletoe
- ❧ Granny and Granddad coming round on Boxing Day
- ❧ Trying to pinch some Sherry
- ❧ Taking it in turns to open our presents and ripping all the paper off.

# My Dog!

*I got a dog a few days ago,  
And feel like chucking it in the bin,  
It just sits there doing nothing,  
Apart from staring at me with a  
grin!*

*It sits there totally emotionless,  
Watching the world go round,  
I jump about in front of her,  
But still she makes no sound!*

*We bark at her enthusiastically,  
But she doesn't even sniff,  
So I point my finger at her,  
Still she sits there bored stiff!*

*I'm getting incredibly tired of her,  
She wouldn't impress me or you,  
At night I lay there wondering,  
What can she do?*

*The next day I found out what  
she could do,  
When I frit her hard and numb,  
She then made a large jump and...  
**OUCH !!! She's bit my bum!***

*By Hayley Turgoose - 2002  
Highgate School*



# Sileby Pedestrian Preference Scheme

---

## Why is change necessary?

---

The county Council have received many letters from local residents, concerned about the lack of pedestrian facilities within the village centre. Also, concerns have been raised about the volume of traffic and the use of Sileby as a short cut from the A46 to the A6.

---

## What are the Solutions?

---

The Council aim to use this scheme to improve the overall appearance of the High Street as well as improving safety for pedestrians. The scheme has been developed with the Parish Council. The proposal includes a number of features that aim to reduce vehicle speeds and create a safer more attractive environment for pedestrians. Features include: Raised crossing points and footway widening creating easier access to the High Street Shops, Sheltered Parking areas making it clearer to motorists where it is safest for

them to park for the short term and improved access to the public car park will mean that more people will be persuaded to shop in the village.

An improved bus stop with raised kerbs for ease of access to buses and a bus shelter.

Planting areas and other environmental improvements such as hanging baskets and public seating will improve the appearance and create a focal point for the village centre.

The scheme will only work with the support of the village so if you have any comments or feel that the proposals should be modified then please let the County Council know by **Friday 17th January.**

---

## How to Make your Comments

---

A public exhibition is being held at the Community Centre on Saturday 11th January 2003 from 10.00am to 4.00pm. Representatives of the County Council and Sileby Parish Council will be there to answer questions.

If you are unable to attend the exhibition, please write to:

Wayne Ramsell,  
Leicestershire County Council, Dept  
of Highways, Transportation and  
Waste Management, County Hall,  
Glenfield, Leicestershire, LE3 8RJ  
email [wramsell@leics.gov.uk](mailto:wramsell@leics.gov.uk).

*Your comments will be the subject of a report upon which Leicestershire County Council will decide whether to proceed with the improvements or if they should be modified.*



# SPORTS NEWS

## Sileby Badminton Club

The Sileby Badminton Club is a small friendly club who meet at 8.30pm to 10.00pm on Wednesdays in the sports hall at Sileby Community Centre.

The Club started in 1977 and also had a junior section for a number of years till this tailed off through lack of interest. For

the first few years the adults played in friendly matches against other clubs but now only play amongst themselves as numbers have fallen.

If anyone has an interest in badminton and would like a game or two they would be very welcome to come along and join this friendly group. There is no joining fee but a small weekly amount is charged in order to cover the hire of the sports hall.

*For more information or enquiries please contact Pat or Don Spencer on Sileby 812112.*

## SILEBY READY FOR A HOMER

**D**id you know that Sileby has it's own baseball team? Channel 5 started showing baseball from the start of its transmission and it's grown from strength to strength in the UK.

The Sileby Vikings originally started 12 years ago after Richard Green, son of Gus wanted to play baseball. But being no team locally his father decided the next best thing was to create his own team. The Vikings were born, Gus's other son Steven started to get involved. But the last time they played in a league was nearly 2 years ago. It's not that they don't want to play, the problem is that they haven't got enough members.

So the Vikings are starting again and sending the call out to all people from the age of 11 and upward. You don't need to know anything about the game just be willing to give it a try. Baseball will not only help your fitness levels, but is entertaining as well. It's also great way to socialise. Before long you will know the difference between a home run and a strikeout.

Contact Gus, Richard or Steven Green on (01509) 816198 for more information.

Useful Website Links  
[www.baseballsoftballuk.com](http://www.baseballsoftballuk.com)  
[www.mlb.com](http://www.mlb.com)  
[www.five.tv](http://www.five.tv)



# STAR RACK

Price News - Merry Christmas

A big  
selection of  
watch batteries  
Branded  
**£1.00**

Paracetamol  
(pck of 16)  
**16p**

2 sorts of brand  
Pregnancy Test  
2 Test £4.50  
1 Test £2.50

Lynx Shower &  
Shampoo  
250ml  
**99p**

A wide range of  
Body Form  
sanitary towels  
**99p**

Pampers &  
Huggies  
Nappies  
**£5.39**

Packs of 4  
Festive Kitchen  
Towels  
**99p**

Herbal  
Cigarettes  
Plain £1.75  
Menthol £1.85

Aquafresh,  
Colgate  
**£1**

Packs  
of refuse, pedal,  
freezer & food  
bags  
**All £1**

**10% Off  
Medicines  
With This  
Advert**

L. Orel Elnett  
Hairspray  
300ml  
**£1**

**Lots More Discounts In Store  
Subject to Availability**

Star Rack Drugstore  
3-5 High Street  
Sileby, Leicestershire LE12 7RX  
Tel: 01509 816 540

[www.connect-cars.co.uk](http://www.connect-cars.co.uk)

# CONNECT CARS

## YOUR LOCAL TAXI FIRM

Thinking of going on holiday? Need a taxi to the airport/station?

### THEN PHONE US FOR A QUOTE!

eg	EAST MIDLANDS	£18.00 / £36.00 RETURN
	BIRMINGHAM	£38.00 / £76.00 RETURN
	HEATHROW	£85.00 / £170.00 RETURN

**Also providing a local service in North Leicestershire**

6 seater air conditioned cars available - For a prompt, friendly, personal service

**Tel: (01509) 814053**

## *The White Swan*

SWAN STREET, SILEBY, LEICESTERSHIRE

*Bar Meals and Full à la Carte Menu*

*Lunchtimes (not Mon) - Evenings (not Sun or Mon)*

*Sunday Lunches and Skittle Alley for hire*

**Bob and Theresa Miller**

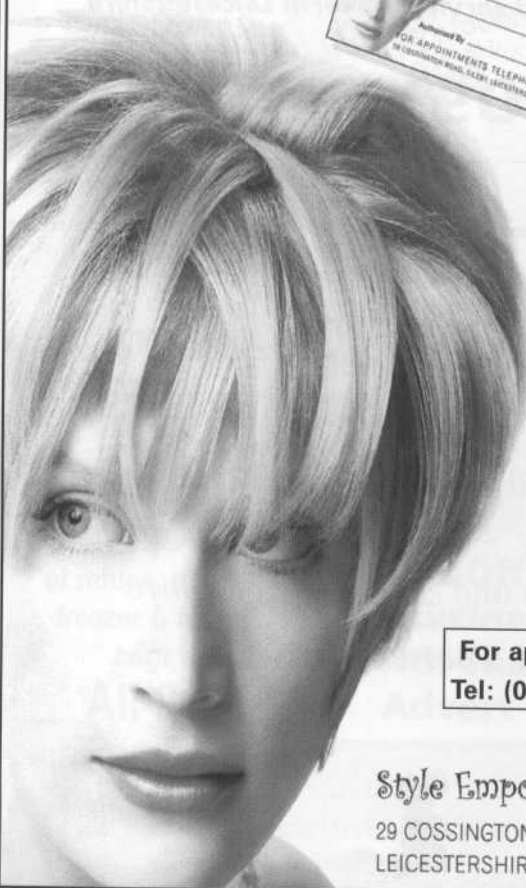
Telephone:  
**(01509) 814832**

Fax:  
**(01509) 815995**



*Credit Cards  
Accepted*

# GIFT VOUCHERS AVAILABLE



For appointments  
Tel: (01509) 815800

Style Emporium

29 COSSINGTON ROAD, SILEBY,  
LEICESTERSHIRE LE12 7RW

Style Emporium

# HETTERLEYS

**ESTATE AGENTS**



**OUR LOW OVERHEADS MEAN  
LOWER FEES,  
SIMPLE MATHEMATICS**

**IN A BOUYANT SALES MARKET, WHY PAY  
OTHER AGENTS FAR HIGHER FEES?**

**Fixed & fully inclusive sales fees:**

**£595.00 / Sale price up to £100,000**

**£795.00 / Sale price up to £150,000**

**£895.00 / Sale price up to £200,000**

**£200,000 plus, fee of 0.6%**

**All fees subject to VAT**

**FEES INCLUDE:**

**ECHO ADVERTISING, DIGITAL PHOTOGRAPHY  
INTERNET ADVERTISING, ESCORTED VIEWINGS  
and a NO SALE, NO FEE POLICY**

**12A HIGH STREET, SILEBY, LEICESTERSHIRE, LE12 7RX**

**TEL (01509) 815900**

**& 11 HIGH STREET, QUORN, LEICESTERSHIRE, LE12 8DS**

**TEL (01509) 413542**

**A very Merry Christmas and Happy  
New Year to all of our customers**



**Don't Be Left Out In The Cold**

**Sandicliffe's Winter Check  
ensures that your vehicle is prepared for the winter.  
We inspect Lights, Battery, Electrics, Brakes,  
Cooling System, Wheels & Tyres.  
Includes Antifreeze and Engine Oil top up,  
to ensure optimum efficiency.  
Normally £35 inclusive of VAT**

**Special offer for talk@sileby readers  
£25 Inclusive of VAT**



**available@Leicester, Loughborough  
Market Harborough and Melton Mowbray  
To arrange an appointment, call our customer assistance centre  
0116 2853589 (Kate), 0116 2853588 (Sam)**

**Sandicliffe**

