

talk @ Sileby

Village Newsletter

Issue 16 Summer 2005



www.sileby-village.co.uk

THE WHITE SWAN

Swan Street, Sileby

**Theresa invites you to relax in the
homely surroundings of the White Swan
at Sileby.**

**Good Quality, Home Prepared Food
Bookable Tables in Non-Smoking Restaurant & Bar
Area.**

(Smoking and Non-smoking Available in the Bar Area)

*NEW Bar Specials Menu
Main Course £4.95*

*Available Lunchtimes & Tuesday,
Wednesday & Thursday Evenings.
Plus À La Carte Menu Available*

Traditional Sunday Lunches

Food Served

Tuesday to Sunday Lunch 12 - 1.30

Tuesday to Saturday Evening 7pm onwards

Closed Sunday Night & All Day Monday

The White Swan, Swan Street, Sileby LE12 7NW. Tel: 01509 814832

Loughborough Forward

Change.

Many years ago Sileby was a small farming community. Then over time change happened and factories started to be built. Our forefathers must have considered this change to be killing the spirit of the village, but the coming of the factories brought more employment into the area and allowed the village to grow. With the increase in population came the need and the means for more shops to be opened, The coming of the railway brought more change.

Now people could commute from their home to the Sileby factories, these businesses now had a larger area from which they could employ their labour force. This in turn allowed them to grow and prosper. Goods could be brought in and out by the railway increasing the market for Sileby produced goods.

Change brought us the motor car and with it the ability to choose our work and living locations. The railway station closed and forced the use of the car even more. Employment opportunities in Loughborough, Leicester and even Nottingham could now be considered for the residents of Sileby.

The closing of the railway also meant that lorries were needed to bring in and take out goods for the factories, changes in lorry design meant that these became bigger with each new model. Soon Sileby was having problems with these large vehicles accessing our small streets, it was no longer practical for industry to be based here. the factories started to close.

Some people wanted the sites left for future industrial use, this use would never happen, Sileby is just not a place that modern industry wants to be located. Change has brought us new to replace the factories bringing more new people into the village.

If you have any views on this, or any other topic then please write to us here at Talk@Sileby.

Next Issue will be Autumn 2006. Copy and advert deadline is 14th August 2006.

Copies of talk@Sileby

Copies of talk@Sileby can be obtained by post at a cost of 50p per issue which includes p&p..

Please make cheques payable to: Sileby Village Newsletter

Back issues of talk@Sileby can be viewed on the internet at www.sileby-village.co.uk

SMARTLY STITCH TAILORS

CLOTHING ALTERATIONS & REPAIRS

Professional Alterations and Repair Work

Trousers, Jackets, Coats, Skirts, Dresses and Many Other
Garments. Nose / Gap Fit etc.

Made to Measure Curtains

Alterations also Undertaken

Leather Garments

Altered and Re-lined

Bags Repaired

Accessories included

PROFESSIONAL

DRY CLEANING AGENTS

Motorbike, Equestrian & Leather Clothing

Repaired and altered

SMARTLY STITCH
TAILORS

1a Little Church Lane
(Next to St. Mary's Church)
High Street Sileby

TEL: 01509 815658

SILEBY PET SUPPLIES

71 KING STREET
SILEBY, LEICESTERSHIRE

Tel: 01509 812908

Large selection of pet food,
treats and accessories

Fishing Bait and Tackle

Home Brewing Kits

Agents for Burns dog and cat food



**FREE local
delivery on
orders over £5**

Front Cover Picture: The newly refurbished War Memorial .

Photo: L Blower

Contacts

Editor:

Dave Palmer, 18 Brushfield Avenue, Sileby,
(01509) 816610.

Email d.r.palmer@talk21.com

Advertising:

Claire Tyson
(01509) 816046

If you would like to give your feedback,
articles or letters these can be sent to the
Editor or you can now use the internet forum
at www.sileby-village.co.uk

The advertising rates for talk@Sileby are listed below

Quarter Page £30

Half Page £50

Full Page £80

These prices are per issue

**Disclaimer: The views expressed in this magazine are the views of the contributors and
not necessarily the views of the talk@Sileby team**



Sileby Neighbourhood Watch

Do you have a Neighbourhood Watch in your road?

Do you want to live in a safe community?

There are presently schemes in the following roads, although in the longer roads, it may only be for a short distance:

Barrow Road, Cemetery Road, Chalfont Drive, Forest Drive, Greedon Rise, Highgate Road, Lynton Close, Parson's Drive, Pryor Road, Ratcliffe Road, Seagrave Road

If there is not a scheme currently in your road, street, close, you may wish to help the community to prevent crime in your area. It is not onerous, but it does give the opportunity for the police to keep you informed of crime in the village and the surrounding area. We have regular meetings (approximately once a month for 1½ hours) at the Community Centre with your Police Beat Officer, Pc 1933 James Griffin, and your Police Community Support Officer, PCSO 6507 Brian Geeson, to discuss any concerns and new ways to prevent crime.

You may wish to share the Co-ordinator's role with a friend / neighbour. Neighbourhood Watch is a registered charity, which, although not a part of the Leicestershire Constabulary, works in partnership with the police to make safer communities.

If you wish to find out more information, without any obligation, please contact Angela Fielding, the Community Co-ordinator for Quorn and Syston Police Stations, on telephone 0116 248 4259 (with an answer-phone) or e mail on angela.fielding@leicestershire.pnn.police.uk

SILEBY PARISH COUNCIL

41 High Street, Sileby – 01509 813075

SILEBY COMMUNITY CENTRE

Sileby Community Centre has a large Main Hall with stage, Sports Hall, Bar, plus other rooms available to hire at competitive rates. Anyone wishing to make a booking please contact the Parish Council Office on 01509 813075 or visit our website www.silebyparishcouncil.org.uk

The foyer and toilets will be painted week commencing 17th July 2006 and the Community Centre will be closed for one week.

EVENTS AT SILEBY COMMUNITY CENTRE

Sileby Heritage Exhibition – 29th April 06.

This was a very successful event attended by over 1000 people. The Heritage Wardens, Peter Campbell and Eric Wheeler would hopefully like to repeat the event in 2007. Sileby Parish Council was grateful to receive a donation of £250.00 towards the refurbishment of the Cemetery Gates.

Theatre Productions:

Sileby Parish Council is promoting (a) The comedy of Errors in October 2006 (b) The Time Machine in February 2007. Dates and times will be advertised.

BEST GARDEN COMPETITION 2006

Sileby Parish Council is again promoting this competition. Judging will take place between 15th and 30th July. Entry Forms are available from Sileby Parish Council office, 41 High Street, Sileby Library and Sileby Post Office. Entry can be made by the owner/resident of the property or by a third party. Closing date for entries is Friday 7th July. There will be a prize giving evening on Friday 18th August at Sileby Community Centre.

SILEBY MEMORIAL PARK

Plans are afoot to provide a new pavilion on Sileby Memorial Park. More information will be available as the project progresses.

DOG FOULING – SILEBY MEMORIAL PARK

Following the article in the last issue at Talk@Sileby, Sileby Parish Council has extended the contract for the Dog Warden.

The vast majority of dog owners pick up their pets droppings and either take them home or place them in the bins provided in the park. The law states dog

fouling is an offence, if not picked up, on the spot tickets can be issued with a fixed penalty of £50. **Tickets have been issued by the Dog Warden.** If taken to court there is a maximum fine of £1000.

The drive to clean up Sileby Memorial Park will extend by way of our Community Support Officer and Dog Warden onto the pavements in the village, many of which are also fouled.

REFURBISHMENT OF SILEBY WAR MEMORIAL

The work to the War Memorial and surround has been completed which has improved and enhanced this area of the Memorial Park. The cost for this work was paid through grants.

REMOVAL OF TREE IN THE CAR PARK, MEMORIAL PARK

The decision to remove the tree was taken following expert advice from a Tree Surgeon and a Landscape Officer at Charnwood Borough Council as it was found to be diseased and dying. As part of phase 3 of the overall plan for the Memorial Park, landscaping will be undertaken which will include planting a tree in the Memorial Park to replace the one removed.

CHRISTMAS LIGHTS 2006

Don't forget to come and join us for this special festive event which will be held on Friday 1st December 2006.

COST OF VANDALISM/ANTI SOCIAL BEHAVIOUR ON AREAS UNDER THE RESPONSIBILITY OF SILEBY PARISH COUNCIL FEBRUARY 06 TO JUNE 06

The cost of vandalism/anti social behaviour is paid from the Parish Council Budget which is part of the Council Tax charges. Everyone in Sileby paying Council Tax pays for vandalism.

Memorial Park including damage to multi-use area fencing	£860
Damage to fencing – Greedon Rise Play Area	£ 50

TOTAL VANDALISM/ANTI SOCIAL BEHAVIOUR COSTS **£910**

SILEBY PARISH COUNCIL POLICY

It is Sileby Parish Council's policy that no action is taken when correspondence or information is received anonymously.



A.G. & D. RICHARDS

OPTOMETRISTS

A. G. Richards, B.Sc., M.C.Optom. & D. Richards, B.Sc., M.C. Optom.

22 KING STREET, SILEBY, LEICESTER, LE12 7NA

Tel: (01509) 812088

EYE CARE for the WHOLE FAMILY
Glaucoma screening and advice on general eye care

Large range of frames from designer to budget

Full range of contact lenses — NHS patients welcome

Home visits available — Accessories and solutions

We take time to provide you with the right eye care

TJN GARDEN MAINTENANCE

ALL FENCING SUPPLIED & ERECTED



OVERLAP



CLOSEBOARD



TRELLIS

- Block Paving • Gravelling • Slabbing •
- Garden Clearance •

Call Tony Neal on

Tel: 0771 2171016 or 01509 815467

BLAST INTO ACTION - A NEW DIRECTORY FOR YOUNG PEOPLE IN LEICESTERSHIRE

The Leicestershire Teenage Pregnancy Partnership have launched their new Sexual Health Directory which gives young people advice, guidance and information about services across the County.

The new 'Blast' Directory contains helpline numbers, website addresses and opening times for a number of services in the County, as well as national organisations that young people may need or want to contact. The Directory also carries important messages from the Partnership, which aims to encourage young people to delay first sex until they are sure they are ready.

Services in the directory cover a range of issues including relationships and sexual health and advice for young parents.

Katie Phillips, Teenage Pregnancy Coordinator for Leicestershire, said: "This handy pocket sized directory has been designed and compiled in consultation with young people throughout the County, ensuring that young people are getting the support, guidance and information they need.

"Young people are able to carry the directory around with them informing them about who they can contact for a number of young people friendly services across the County. All the services in the County that offer advice and guidance to young people are confidential and aim to ensure that young people have the appropriate information about issues that may concern them so they are able to make informed choices about their lives as they become young adults."

The 'Blast' directory, which has been designed for under 19's is now available and young people can pick them up from Youth Centres, Connexions Centres, Health Workers and GP Surgeries throughout the County.

Meadow View Farm Cossington Road, Sileby

Tea rooms and Farm shop

Now open Wednesday to Sunday, 9.30—5.30

Our farm shop now sells locally produced organic milk, cream and honey, homemade jams and sauces as well as our own organic meat and seasonal vegetables.

Come and enjoy the home cooked meals in our tearooms using wherever possible our home grown organic produce.

Senior Citizens Specials, Thursdays, Two Courses £5.00

To book your own dinner party in our function room or to enquire about any event telephone 01509 815670 or contact us through our website on www.meadowviewfarm.co.uk

LOCAL HOSPICE CAUSES A FLUTTER

Staff and volunteers from the Rainbow Children's Hospice Lottery took to the roads in May to encourage local people to 'have a flutter' and to help support the children and families who use the Hospice throughout the East Midlands.

The tour of Leicestershire was part of National Flutter Week, a campaign devised by the Hospice Lotteries Association to enable hospices, like Rainbows, to raise the profile of their fundraising lotteries. To mark this occasion, Rainbows Children's Hospice in Loughborough celebrated the week by getting out and about in the hospice car kindly funded by Sturgess, Leicester. The car followed the Leicester Sound Black Thunder Crew around Leicestershire and appeared at a number of locations as well as popping along to several businesses.

For more information on how to play the Rainbows Lottery, call the Lottery Hotline on 0870 3300219 or visit www.rainbows.co.uk.

RAINBOWS TO BENEFIT FROM GOVERNMENT FUNDING

Rainbows Children's Hospice recently received news that it is likely to benefit from £300,000 allocated by the Government for Children's Hospice Services in England and Wales. The Government announcement instructs that the funding should be spent on end-of-life care in the hospice, and both planned and emergency respite. All of these are areas in which Rainbows specialise.

The Government announcement has arrived just in time – as a three-year funding commitment from the Big Lottery Fund is due to end September 2006. The extra £660,000 has helped to increase services, and enable the hospice to provide further care for families with life-limited children.

It costs in excess of £2 million a year to run Rainbows, and fundraising is becoming more and more difficult. The money from the government is extremely welcome; as it will help to reduce the daily struggle we face to raise much-needed cash. However, it is important to stress that even with the extra money Rainbows still relies heavily on donations from the public.

EVENTS FOR JUNE/ JULY

27th June: Stoneygate School Gala Concert, DeMonfort Hall – Leicester (Starts: 19.00) Tickets are £10 on the night or £8 in advance from Stoneygate School on **0116 259 2282**

15th July: Music Through the Decades – With Tuxedo Swing, Loughborough Grammar School (17:00 – 22:00) Tickets £10 on the night or £8 before the evening, under 14's free.

For tickets call **Sarah Staines on 01509 638026**

16th July: Summer Spectacular, Loughborough Grammar School (Gates Open: 12.00) Entry free for children and £2.50 for adults

Children's Playgroup

St. Gregory's Parent & Toddler Group is at 24 The Banks, Sileby and is open on Tuesday mornings during school term time from 9.00am till 11.15am. We are situated at the back on St. Gregory's Church across from the banks surgery in the new rebuilt hall.

This is a large hall with very good facilities for the children to play. We have a crafts table that is organised by one of the volunteers and plenty of toys of all ages, these range from baby toys to pre-school toys.

All the children have a drink of juice both orange/blackcurrant and a selection of biscuits or even sometimes crisps/snacks, while their parents have a chat over a cup of tea/coffee.

We have an outing during the summer school term time with all the children: also, we have an annual Christmas Party that normally includes a bouncy castle, bring and share lunch and a visit from Father Christmas for the children. At Easter we have an Easter theme, which involves making chocolate nest egg cakes, and lots more activities.

The cost is a £1.00 for adults and 25p each for children.

For further information please don't hesitate to contact Anita on 01509 815798.

Sileby Day Nursery

Little Apple Day Nurseries

- Offering quality childcare for children aged 6 weeks to 5 years
- Nursery Education funding for 3 & 4 year olds & Wraparound care
- After School club
- Secure indoor & outdoor facilities
- Opening times 7.30am-6pm
- Flexible Sessions to suit your needs

For more Information please call Tracey

(01509) 812 300

231 Cassington Road, Sileby, Leicestershire, LE12 7RR



In the last edition we asked for details of child activities and child minders. Here are the details of those that we received.

Twinkle Tots music Group for babies and toddlers afternoon and morning sessions available in Barrow and East Leake cost £3.25 per session age 6 months to 5 years for more info contact Philipa 01509 414406

Andrea J Wells - OFSTED
Registered Childminder. Tel
815437

If you would like your details including in the next issue please get in touch.

Sileby Best Gardens Competition 2006

The Sileby Best Gardens Competition will be run again by the Sileby Parish Council this year and will be bigger and better than ever with more new categories introduced. Judging will take place between the 15th and the 30th July across the following Categories: Best Front Garden, Best Back Garden, Best Non Residential property (businesses, pubs, clubs, sheltered housing communities, etc.), Best Feature Garden and new this year, best Allotment. Most categories have 1st, 2nd and 3rd prizes and here are also Special awards for unusual or innovative gardens.

Entry will be by nomination only (either self nomination or by third party) and forms will be available from the Parish Council offices on High Street as well as other places around the village. These will need to be completed and submitted (entry is entirely free as usual) to the Parish Offices no later than Friday 7th July.

Prize giving will be held on Friday 18th August at 7.30pm at the Sileby Community Centre. We need your help to make this the biggest and best competition yet. For further information please contact the Clerk to the Parish Council on 01509 813075, by e-mail on Clerk@silebyparishcouncil.org.uk or visit

[http://
www.silebyparishcouncil.org.uk/
bestgardens.html](http://www.silebyparishcouncil.org.uk/bestgardens.html) .

Kids Driving You Mad? Got Some Spare Time?

Then why not escape from it all and view the new improved Derrys.

We now have a large selection of:-

**Quality, Colourful and Decorative
Shrubs and Plants.**

Ceramic, Wooden & Decorative Pots.

**All Lawn Products, Turf, Grass Seed
and Lawn Food, Plant Foods, Compost
and Fertilisers.**

**Extensive Range of Fruit Trees, Plants
and Bushes, all Hedging Plants.**

Well stocked and equipped shop-garden.
Tools of every requirement.

Don't believe us? Come and see for yourself!

All of your gardening wants and needs,
so come and visit Derrys Nurseries.

**THE NEW SPECIALIST POT
CENTRE WITH OUR EXTENSIVE
RANGE OF POTS.**

Escape from it all for an afternoon.

Derrys Nurseries.

Well Worth a Visit...

Open Every Day
All Bedding Now Available

DERRYS NURSERIES

Main St. Cossington
Tel: (01509) 812815

A1 PLASTERING

74 BARROW ROAD, SILEBY
LOUGHBOROUGH LE12 7LP

For plastering/ceramic tiling.

Fibrous plaster moulding
supplied and fitted.



Exterior rendering and
Tyrolean finishes.



Fully insured/Free estimates
30 years experience

Tel: (01509) 814711



PAINTER & DECORATOR

**62 SEAGRAVE ROAD
SILEBY**

Tel (01509) 814916

B. YATES & SON

**Plumbing, Heating
& Gas Services**

**Bathrooms
& Showers**

CORGI Registered

**Tel: 01509 816728
Mobile: 078088 30697**

Made your Will Yet?

"I can come to your home at a time to suit
you & give professional friendly advice on
"Wills",

Trusts & Estate Management
Our Standard Will £24.95 + vat

Also

Power of Attorney :

Property Trusts;

Will Storage.

Inheritance Tax Wills :

Funeral Plans;

Children's Trusts.

Telephone Mrs Chris Thomas
for an appointment or a brochure

08450 568571

In Home Legal Services

Member of the Society

of Will Writers

www.inhomelegalservices.com

The Great Debate – Traffic in Sileby

Recently on the village website forum there has been a debate about traffic and parking in the village, this came from a comment made about parking on Cossington Road causing problems, it rapidly turned into a debate about traffic in general and some comments about what can be done to 'fix' the problem. I include some of the comments made here.

“Is anyone else fed up with the vans that have started parking on Cossi Road, across from the Conservative club as you turn left out of Harlequin Road. It's bad enough trying to get down Cossi Road as it is without any more obstructions.”

“Parking is generally up to the Police if illegal and some of this is. Rule 317 of the Highway Code states that you must not park "opposite or within 10 metres (32 feet) of a junction, except in an authorised parking space”

“At least things are looking up around The Banks - Leicestershire County Council are looking at changing the no parking areas which is great. Just one question - will there be a resource to police it?”

“I see with dismay that they haven't taken on board my plan to make King St, Swan St, Burton Rd and The Banks 1 way!”

“Whilst making Swan Street a one-way system is worth considering; the Banks too, I don't get the argument to include King Street”

“Instead of sticking houses and flats, in every available space, why didn't someone build a car park? And *instead* of developers and estate agents, feeding greedily; on the bones of our beloved, dying village; **why** didn't anyone think, that due to the increased *population* and thus; more *vehicles*, more car parking space was needed? Maybe they did, but they didn't DO anything.”

“The main reason for my 1 way idea is that it addresses some key needs - better parking on Swan Street being one. If a "one way ring" was created going clockwise from The Banks, via Brook St, High St and King St, then we would not only get better parking provision, but by changing priority to the users of this ring, then the nasty junctions of King St / Banks, Brook St / High St and High St / King St might just be a little less dangerous.”

Do you have any comments to add to these edited highlights? If you have access to a computer then why not join the debate on the internet at www.sileby-village.co.uk/forum. Or you can write to us at Talk@Sileby at the address on page 2.

GIVE A SPECIAL GIFT THIS YEAR WITH LOROS

These days the LOROS lottery membership offers a 1 in 60 chance of winning any one of 350 weekly prizes up to the value of £2,000. It also offers the chance to choose which charity benefits from your lottery subscriptions.

Why not buy a Lottery gift subscription for the special PERSON in your family. Gifts comprise a unique lottery number, gift card, certificate, and car sticker and start from £10 for 10 weeks entry with no upper limit.

You can tailor a gift to any occasion throughout the year, for example 21 weeks for a 21st Birthday or 40 weeks for a Ruby Wedding Anniversary.

To join the LOROS Lottery yourself or to purchase a gift just call the LOROS Lottery helpline on 0116 2318430, it's as easy as that!

Fundraising Events diary

1st July. Rotary Summer Ball Held in the grounds of Brooksby Hall, Nr Melton Mowbray 7.30pm for 8pm Dinner Buffet. Black Tie (entertainment with Lex Icon) Tickets £40 in aid of LOROS & Heartlink Contact Trevor Kyte on 01664 474427

2nd July. Its a knockout Challenge Held at Alliance & Leicester HQ, Carlton Park. Charity Challenge 12noon – 5.30pm

9th July. Market Bosworth Show (LOROS are the nominated charity) Adults £6 Children ,OAP & Concessions £4, Family Ticket £15. Gates open 8.30am

3rd—6th August. Leics Country Music Festival Hinckley Town Football Club. www.royscmf.co.uk

23rd August National Grid 5K & kids Caper 1mile. In association with Hinckley Running Club. 18.00 kids race 18.30 main race Kirby Mallory Race Track, Kirby Mallory Adults £5, under 16's £2.50

hurch ews

The United Benefice of Sileby, Cossington and Seagrave

We are delighted to report the appointment of Rev'd Richard Hopkins to the Post of Priest in Charge of Sileby, Cossington and Seagrave. Richard was Previously Curate of St Alkmund's, Duffield. He is married to Rosie and they have two sons, James and Tom.

Richard will be licensed at St Mary's Church, Sileby on Wednesday 12th July 2006 at 7:30 pm, when we look forward to welcoming him as our new Rector. For further information visit The United Benefice website at www.scsparishchurches.org.uk

Sileby Baptist Church News

I'd like to introduce to you Sileby Baptist Church. It was established in 1818 and is situated on Cossington Road, opposite the library and next door to the Free Trade Inn. We are about to embark on an exciting building project and would like to enlist the support of our local community, by letting you know what's going to be happening in the coming Autumn months. Please keep reading and feel free to contact us if you have any questions about anything at all.



The story so far...

We have been saving towards improvements/redevelopment since the 1980's and to-date we have managed to save approximately £133,000, our target is £210,000. The church is made up of side-hall/entrance foyer, main worship hall with baptismal pool, vestry, kitchen, upstairs room, outside toilets and front and back yards.

The current state of the church is generally run down and in desperate need of repair/renovation to make it a safer place to be and bring it into the 21st Century. The main meeting room has cracks in the walls, and old ripped, mis-matched carpets, faded from the sun in places and spoiled by wax from Carols by Candlelight over the years.

The vestry at the back of the church is approximately 13x13ft. During the winter it's wall are often wet due to a flat roof collecting and leaking water.

The stairs to the upper room are steep and pose a hazard, particularly for small

children and adults carrying children up and down the stairs for the crèche. The understairs cupboard has plaster falling off.

In the upstairs room, which is used for crèche on a Sunday morning, there is damp in the front and side walls with plaster falling off in various places around the room. This room often gets very cold in the winter, despite there being heating in there; and very warm in the summer due to lack of proper ventilation.

The kitchen is approximately 7x4ft, making it difficult for more than two people to use it at any one time. The plaster on the ceiling by the back door has recently fallen down.

There are outside toilets, also with cracks in the walls. These are obviously cold in the winter and often get frozen during the winter months.

Both the front and back yards have uneven, and therefore unsafe, slabs throughout, so it is not a place we can allow the children to play, even in the better summer months.

For the Sunday School classes we have to hire a hall each week as we do not currently have space for the classes within the church building itself.

What's next...

This Autumn you will notice a hive of activity around the church as building works commence.

The plan is to have a new entrance, with greenery around the front of the building.

This will provide us with a welcoming and eye-catching entrance to the church.

The entrance foyer will be bigger and more welcoming. Instead of the static baptismal pool, we plan to purchase a portable one for our own use and to hire out to other churches. The worship area will be bigger and so accommodate our ever increasing congregation and, with chairs instead of pews, it will be a more versatile space all round. We want to be able to use the room for other things by moving the chairs to the edges of the room, and could also be in a position to hire out the room for the local community to use. We have included offices in the plans for administration purposes and will have new inside toilets upstairs and down, with disabled and baby changing facilities to accommodate everyone and a lift and ramps as needed. There will be a much bigger kitchen, classrooms and a youth hall. The renovations will take place in two phases. We will be levelling out the back ready for a new larger worship hall at a later date (the current worship hall becoming a lounge area); in the meantime making better what we already have while we raise even more funds for the future to complete the works.

Overall, we need a larger and more modern church to be able to accommodate our congregation and be more involved with our local community.

If anyone is interested in making donations towards this work, please contact John Sim on 0116 2607588 or Julian Bown on 01509 812450, or make cheques payable to "Sibley Baptist Church" and post them to 28 Kendal Road, Sibley.

Finally, look out for the plans on our notice boards and keep your eyes open for our fundraisers, which we will mention here and in the local papers.

FRIENDS of ST. MARY'S CHURCH, SILEBY - AGM

REPORT

The recently held Annual General Meeting of the Friends of St Mary's Church, Sileby, heard from Treasurer, John Burton, that in the last 6 years £69000 had been received and raised by the Friends' work, and major repairs to the church, costing £41500, have been completed.

Current membership stands at 84 individuals and family members, providing a solid base for our fund raising activities. However, in a growing village, it was hoped that these numbers would soon be increased further.

Secretary, Eric Faulconbridge, outlined the events undertaken through the committee over the last year; these included the Church Garden Party, Open Garden, Murder Mystery, Church Festival and Coffee Mornings. Eric thanked everyone who had organised, helped or attended the events.

The meeting was told by Chairperson, Iris Stevens, that the current priority, against which funds are being raised, is the refurbishment of the electrical system within the church, to ensure that the church can cope with its electrical needs over the next generations of its use. Unfortunately, due to issues with the consultant being worked with, the electrical specifications have still not been drawn up and we are no further ahead than we were at this time last year. This situation is to be resolved to ensure that greater emphasis is applied to this important project.

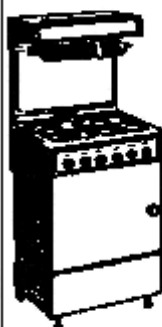
Our first fund raising event of the year took place on Saturday, 6th May, when Syston Band performed a selection of brass band music in church; This was followed, on Saturday morning, 3rd June, with our second Church Garden Party on the church lawns; a variety of stalls were arranged, including the popular plants stall, and the church was open to visitors with refreshments also being served. Look out for future events.

St.Mary's church is a Grade II* listed building dating back to its origins in the 12th century. All information about the Friend's aims, successes, membership, pictures, events etc., continue to be available on the World Wide Web through our own website, set up with help from the Beehive Project in Leicestershire. Find out more about us from the site address – <http://beehive.thisisleicestershire.co.uk/fosm> (note that 'beehive' replaces 'www' in a normal address).

If you require further information, visit our website, as above, or telephone one of the committee officers on 01509 815525, 01509 813986, or 01509 813061.

GLYNNE WILDBORE

DOMESTIC APPLIANCE REPAIRS



FULLY QUALIFIED LOCAL ENGINEER

*over 20 years experience
Repairs & Servicing in
your own home to most
makes of Washing
Machines, Tumble Dryers,
Cookers, Fridges,
Freezers, Vacuums,
Microwaves, etc.*

Tel: Leicester
260 9773

Mobile:
07850 733 050

- **NO CALL OUT
CHARGE**
 - **REALISTIC PRICES**
 - **ALL WORK
GUARANTEED**
 - **SPECIAL OAP RATES**
- For a reliable and friendly
service*

MARK C. WALTON

Approved Electricians

B.B.A

**Faults and Repairs
Test /Inspections
Certificates P.A.T
New Installations**

**71 Barrow Road
Sileby, Leicestershire**

**(01509) 813201
(07870) 525748**

24 Hour Callout

Man With A Van



**For All of your
Transporting
Needs, including**

**Garden Waste Removals
(Council Tip Pass Certified)
& FLAT PACKED FURNITURE
ASSEMBLED.**

**For a Polite & Convenient
Service call Nick Daniels on**

Sileby: 01509 812216

Mobile: 07901 661105

"No Job Too Small"

Soar

Valley

Brides

**Gowns, Bridesmaid
Communion Dresses
Also Made to Order
Plus All accessories**

Open

Tues, Wed, Thur, Fri & Sat

7 High St, Sileby, Leics Le12 7Rx

0

1

5

0

9

8

1

4

3

0

6



Your Letters

Send you letters to the editor. Please include your name and address (not for publication if you wish).

Dear Sir,

I am given `talk@sileby` to send to my relatives in Canada but I always have a quick read before I send it. Your article on `The Maltings` brought back many happy memories to me as it was in 1976 that Paul and myself set up Ladkin Hosiery there. We wanted to call the business Tower Hosiery as we could see the church tower from the Maltings, but as this name was already registered we used our own name instead. We started in two upstairs rooms, and everything had to be carried up the stairs, or hoisted up to where they used to bring the grain in. After a couple of years we had another room and had to walk through the gantry. We always felt as we entered the other building that it was haunted and I was always scared to go over in the dark. We then acquired the building right across the yard for more machines and an office and I was allowed the end of the room for my stock for the markets. (I had worked on the markets to keep us while Paul worked on the new business). We had so much stock that someone suggested we have a factory sale. The first Friday the doors were opened at 11 am and we couldn't believe it as a steady stream of mums and toddlers kept coming through. We held the sales until we moved to Barrow in 1982. They were very happy years spent at the Maltings, but hard work, as I am sure some of our original employees, who are still with us, will tell you.

On another matter, I was sad to read B Sherratt's letter regarding grammar etc. Perhaps he could spare the time to help the editorial staff with our native language. But I think most people in Sileby, prefer Sileby folks language.

Mary Ladkin, Seagrave

Dear Sir,

The editorial response to the letter criticizing the grammar and syntax of Talk @ Sileby was polite and praiseworthy. However the condescending tone and lofty diction of his critic make it deserving of an answer. It is a pity that your correspondent did not step outside his glasshouse before throwing stones. Then he might not have started his letter formally and signed off informally: "Dear Sir" is properly followed by "yours (very) truly". He might not have followed the singular subject of a sentence "choice" with a plural verb "are". He might not have inserted a superfluous comma after "syntax used"; there is no pause here. He might not have used the ugly "his/hers" form, acceptable in legalese but not letter writing, when it could easily have been avoided by writing "readers" and "their". But I am merely one of the Sileby peasants, so what do I know?
Yours very truly,

J.P.Wallace., Seagrave Road



Sileby Gardening Gnomes

Meetings and Forthcoming events for 2006/7

Wednesday 13th September

Things in Season by Alan Dayman - Derrys Nursery

Wednesday 11th October

Vegetables by David Thornton

Wednesday 8th November

Gladioli by Arthur Smith

Wednesday 13th December

Seasonal Christmas by Felicity Austin + Social

Wednesday 10th January 2007

Trees by Jeff Bates

Wednesday 14th February

Wild Orchids by John Jones

Wednesday 14th March

A walk in our garden through the year by Ailsa Jackson

Wednesday 11th April

Maundy Flowers by Rosemary Mason

Wednesday 9th May

Annual general Meeting.

Members are charged £8.00 per year. Non-members are welcome and are charged at £2 per visit.

The Sileby History Exhibition.

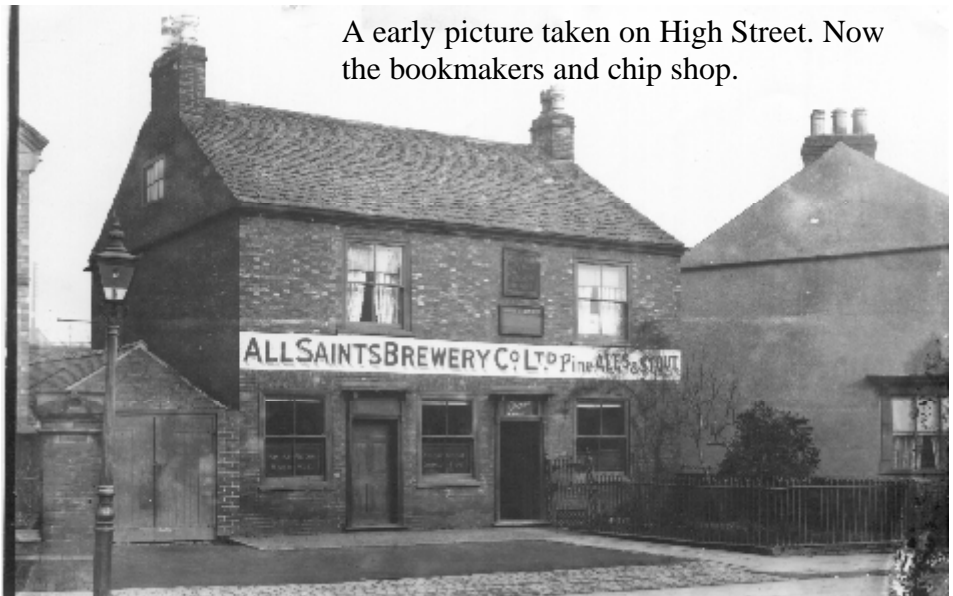
Saturday 29th April saw 'Yesterday Today' a local history exhibition presented in the community centre by Sileby's heritage wardens Eric Wheeler and Pete Campbell. The exhibition consisted of a large number of photographs and ephemera of the village and its people through the ages; some even had a modern day photograph to show the differences.



The event was very well attended throughout the day, Eric and Pete even had to ask people to leave at the end so they could pack up and go home. I am sure the 'older' generation had a good trip down memory lane, while the newer members of the community enjoyed seeing the village as it was. Eric and Pete must be congratulated for putting on the show, it must have taken a lot of time and effort to organise.

Some of the photographs on display can be found on the village website (www.sileby-village.co.uk), as can some video footage of the exhibition itself.

Pete and Eric are hoping to have another event in the future so if you would like to help them with some new material they would be pleased to hear from you.



A early picture taken on High Street. Now the bookmakers and chip shop.

LOCAL MUM HAS ALL THE ANSWERS

New concept ‘whatcanwedotoday.co.uk’ offers guide to child-friendly Charnwood

A local mum has decided to take the question of ‘what to do’ and ‘where to go’ with your children into her own hands by launching a new concept designed to give all the answers. Mum-of-two Verity Graham, who recently moved back to Charnwood after several years living in Cheshire, found it hard to find out information about what child-friendly places and services existed in the local area. As a result, she has decided to launch **whatcanwedotoday.co.uk** – a one-stop-shop quarterly magazine and website for people with children. Both are set to be officially launched in June, in time for the start of the summer holidays.

‘The school holidays can be a particularly stressful time for parents, for obvious reasons – trying to find new fresh ideas for places to visit and things to do with their children, or simply knowing beforehand how child-orientated places really are. I’d spent a lot of time talking to other parents, grandparents and carers who shared my frustration, and came up with the idea of **whatcanwedotoday.co.uk**,’ said Verity ‘There are plenty of ideas, guidance and support out there for parents, but until now it has all been available in different places and the quality of information often differs greatly. I think it is always amazing that so many people don’t know what’s on their own doorstep.’

whatcanwedotoday.co.uk will be a comprehensive guide to a ‘child-friendly Charnwood’ and the surrounding area, covering places to go both indoors and out; shops; pubs and restaurants; party ideas and entertainers; local clubs and classes; and even where to get their hair cut. The quarterly magazine will have ideas and recommendations from local experts on how to keep children entertained and safe over the summer holidays.

The website will give information on opening times, prices, facilities, and age groups etc as well as letting you know about the day’s weather, so you can plan in detail and avoid disappointment. There will also be an opportunity for local people to make their own comments and recommendations on places they have visited, helping to keep the information as up-to-date as possible.

‘It’s definitely the most challenging thing I’ve ever done, but it’s hugely exciting at the same time. The support from local people I’ve spoken to has been great and I have already had a lot of interest from local businesses who want to be involved.’ Verity explained

Anyone who has recommendations for inclusion in the guide and website, or interested in finding out more can email Verity at customerservices@whatcanwedotoday.co.uk or call her on 07772 138988

MR SMITH GOES WALKING

This diary was written during 1979 – 1981, it records the local walks every Sunday (weather permitting!) of Horace Smith. Horace was in his 80's at this time, having been born in 1897. He was Sileby born & bred, seemingly living in the Cemetery Road and Ratcliffe Road area. If there is anyone who remembers Horace then I would love to hear from you.

Pete Campbell

SUNDAY FEBRUARY 10th 1980

A great change today after days of heavy rains and floods – a blue sky and warm sun shine. Since having been kept in for two Sunday mornings, I decided to take it easy and walked as far as East Goscote only.

Broome Lane clear of floods but River almost level with its banks, and the Spinney full of water. A fine time for insect feeding birds in the soft ground now floods have receded – Seagulls and also rooks. Three partly built nests in Everards Spinney. If the rooks are going to build here, its time to get cracking, but not a bird in sight.

Sticky buds shining in the old cheggy tree. It looks as if there'll be no footpath this far as it ends at College Lane. The old tree safe for a while longer.

SUNDAY FEBRUARY 17th 1980

Candlemas legend seems to be coming true for this morning was mild and sunny.

So up this Fosseyway I go (as William Haylett would have put it). Well over a hundred Rooks were circling Paynes Spinney reminding me of a "Spotted Dog" pudding as they dotted the sky.

In the last field before the Thrussington turn I see my first Lambs– a good dozen of them with their Mums, and basking in the warm sunshine. How often have I seen this picture through the years, and yet it seems always new – a renewal.

In turning for Thrussington a car comes from behind and its driver asks me the way to East Goscote. He had come from Leicester way and should have left the main road at Ratcliffe, but instead continued over the flyover. I directed him and then accepted a lift from him as far as the brook, this side of the Village.

I forgot to mention that there was no sign of the building by the Rooks in Paynes Spinney, neither in Everards. This inactivity is nothing to go by as regards bad weather to come, for when the Rooks decide to begin building – the nests 'are up' in no time, and what "starts them off" – who can say! I am almost the only walker and those who are not in their cars are mostly in their homes, perhaps watching 'telly', doing the pools or maybe reading. One time when there were no motor cars and fewer indoor attractions men would take a Sunday morning walk – sometimes all across the Roads, or on field footpaths – "you'd aught too bin ther, Jim"

FINALLY A PLEA (OR TWO)

I need information / memories / photo's / artefacts on Sileby's Brickworks.

I would also like to hear from anyone who is a descendant of William Trickett Wright (of Brickworks fame)

Please contact Pete on 01509 814618 Or email peter@aberglasyn.freeseerve.co.uk

THE VILLAGE QUIZ 2006

The Village Quiz this year has been bigger and better than ever with 28 teams being hosted by seven venues not only in Sileby but in Cossington and Seagrave too. This means that every month well over 100 people have been moving around the area to take part in what has been a much enjoyed quiz league. This is down to two key factors – the organisation and the quality of questions, and this is thanks to a few key people that sacrifice taking part in order to facilitate the quiz for others.

Firstly the lady who is responsible for the conception, running and continued success of the League, Joan at the Free Trade Inn without who's enthusiasm and drive would mean that the Village Quiz would not exist. Just as important is Clive, the man who writes the 96 questions a month. This is no easy task and the combination of questions ranging from the infuriatingly easy (when the other team picks them) to the infuriatingly difficult (when your team picks them) makes the night highly enjoyable if not sometimes somewhat frustrating.

Alongside these is Mark who puts the League tables together and the quiz masters that make it all work at the venues. They have the unenviable task of reading the questions, adding up the scores, taking the flak and above all make it so enjoyable to participate. I don't have the room to name them all here but they have all done an amazing job indeed. As a player in the League I'm sure I speak for all concerned when I offer a great big thank you to all of the people that make it possible.

Now we have the Presentation night to look forward to, where we get to find out who's finished where in the League. My team (Hot, Fat Welsh and Lovely) have no chance but we're hoping to at least finish above local rivals The Plumb Crushers but won't know until the Presentation Night (5th June at the Conservative Club). Whatever the result I shall have fond memories of the season, from giving the comedy answer of Uranus to a question and actually getting it right to enjoying my team mate's motivation to another when he knew the answer was 'The Titanic' (first ship to send the SOS signal) and she didn't – "JUST THINK OF A BIG BOAT!" were his inspirational words of wisdom. It worked too....

The Homefield fascia Company

Unit 5. Barrow Road Business Park, Barrow Road, Sileby

01509 814182

Specialist in complete replacement upvc fascias, soffits, guttering and shiplap cladding.

All materials carry a manufactures 20 year colour fast warranty. BBA Approved.

Available in white /mahogany /maple / light oak / rosewood / upvc.
Virtually every job requires removing the first two rows of roof tiles to access the rafters for inspection and correction and insertion of plastic roof end trays and ventilation systems, this is normal procedure and we have our own scaffolding system to do so, getting over conservatory roofs etc. no problem.

**WE ARE NEXT DOOR TO COST CUTTERS
SUPERMARKET ,LEFT SIDE
OR CALL ASHLEY ON 01509 814182**

**Mature experienced fitting team
No pressure sales, References available upon request
Free written quotations. Professional fitting. Fully insured.
Reliable service every time.**

3+ CAR SERVICE PLAN

ANY MAKE - ANY MODEL - ANY AGE

**OIL & FILTER CHANGE
& SAFETY INSPECTION**

ONLY **£20**

State-of-the-art
Servicing at
"Quick Fit
Centre" prices

FRANCIS
MOTOR GROUP

PLAN ONE SERVICE

20 point

Only **£65**

PLAN TWO SERVICE

40 point

Only **£140**

PLAN THREE SERVICE

60 point

Only **£240**

See overleaf for full details

**AVAILABLE
WHILE-U-WAIT
OR BOOK IN NOW!**



MOT

**PLUS AN
MOT £20***

7 day FREE re-test!

Only with a 3+ Plan 3 Service

**AIR
CONDITIONING
RE-GAS**

FROM **£95**



TYRES

FROM **£24**

including VAT, fitting, removal and balance

CAMBELTS

FROM **£150**

including VAT & fitting

Loughborough Rd, Mountsorrel.

0116 230 4242

www.francismotorgroup.co.uk

* Replace with additional cost for platinum or black & silver models with 16 or 18 inch wheels. ** Additional cost for vehicles requiring full synthetic oil



LANZA

- Open 6 days a week
- Two late nights - 8pm
- 365 London trained
- Designer haircuts

from **£21.00**
to **£49.00**



Hairdressing with passion

01509 812968

57 The Banks Sileby Leicestershire

www.lanzahair.co.uk