

talk @ Sileby

Village Newsletter

Issue 17 Christmas 2006



www.sileby-village.co.uk

Important Contact Numbers

Police (non 999 calls)	0116 222 2222
Sileby Beat Officer. PC James Griffin	0116 222 2222
	option 2 no. 1933
Sileby Community Support Officer. Brian Geeson	0116 222 2222
	option 2 no. 6507
Parish Council Office	01509 813075
Highgate Surgery	01509 816364
The Banks surgery	01509 812343
Charnwood Borough Council	01509 263151
Leicester County Council	0116 232 3232
Road Line (Problems with roads, pavements or lighting)	0800 62 62 03

High Gate Medical Centre, % Storer Close, Sileby Open Meeting - Saturday 27th January 2007

An open meeting for patients of Highgate Medical Centre will be held on Saturday 27th January 2007 at the surgery from 10am to 12am to discuss the Patient Participation Group and it's activities.

Any patient of this surgery is warmly invited to attend to find out more about this group.

New Years Eve Dance

To be held at the Community Centre Sunday 31st December 2006 at 7:30pm for 8:00pm.

Dancing to the Mike Graham Quartet.

Admission by ticket only with limited numbers of tickets at £15 each including Buffet, there will be a Bar and Raffle prizes. Smart or Evening Dress Requested.

The charity this year will be Wishes for Kids. Tickets available from Alyvn Muggleton 812874, Malcolm Lewin 812624 or Roy Brown 816545.

talk@sileby

Welcome to the 17th Issue of talk@sileby. When the newsletter started we were fortunate enough to receive some financial assistance but despite that, at times it seemed that we would have a short existence. Over the years some of the personnel on the team have changed but we now have a settled hardcore of volunteers who are willing and able to give of their time to help the production of the village magazine. Nevertheless we always give a warm welcome to anybody who would also like to help – just contact either Roy Brown or Dave Palmer.

Our advertisers deserve special mention because without their support it would be extremely difficult to produce the newsletter in its present form with a free circulation in excess of 3300. Please give them your support whenever possible.

I hope you find something to interest you in the following pages. We only include articles that are sent to the editor by you, the residents of Sileby.

There are lots of Clubs, Societies and organisations operating in the village. We would therefore welcome your news, interesting features and a note of any forthcoming events you may have in order that you may take advantage of free publication. The editor would be delighted to receive this information for inclusion in future editions of the newsletter.

Next Issue will be Spring 2006. Copy and advert deadline is 18th February 2006.

Copies of talk@sileby

Copies of talk@sileby can be obtained by post at a cost of 50p per issue which includes p&p..

Please make cheques payable to: Sileby Village Newsletter

Back issues of talk@sileby can be viewed on the internet at www.sileby-village.co.uk



Neighbourhood **Watch**

Sileby now has a new Neighbourhood Watch manager, Mrs Mel Fryer has taken on the job of organising monthly meetings which take place on the 1st Tuesday of each month in the Community Centre (Primary Room) from 7.30pm. New members are welcome to attend. For information please contact Leicestershire Police on 0116 222 2222.

Front Cover Picture:
The High Street with Christmas Lights 2005.
Photo: D Palmer

Sileby Scouts Christmas Fayre

Saturday 18th November

2—4 pm

Sileby Community Centre

Stalls, Cakes
and a visit from
Santa

Admission Free



Contacts

Editor:

Dave Palmer, 18 Brushfield Avenue, Sileby,
(01509) 816610.
Email d.r.palmer@talk21.com

Advertising:

Claire Tyson
(01509) 816046

If you would like to give your feedback, articles or letters these can be sent to the Editor or you can now use the internet forum at
www.sileby-village.co.uk

The advertising rates for talk@Sileby are listed below

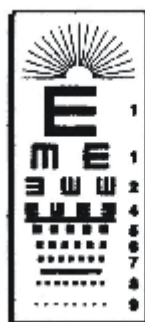
Quarter Page £30

Half Page £50

Full Page £80

These prices are per issue

Disclaimer: The views expressed in this magazine are the views of the contributors and not necessarily the views of the talk@Sileby team



A.G. & D. RICHARDS

OPTOMETRISTS

A. G. Richards, B.Sc., M.C.Optom. & D. Richards, B.Sc., M.C. Optom.

22 KING STREET, SILEBY, LEICESTER, LE12 7NA

Tel: (01509) 812088

EYE CARE for the WHOLE FAMILY

Glaucoma screening and advice on general eye care

Large range of frames from designer to budget

Full range of contact lenses — NHS patients welcome

Home visits available — Accessories and solutions

We take time to provide you with the right eye care

Choosing a new carpet?



**Relax.
Make the right
choice with us**



Choose Dalkard & Elliott where excellence comes as standard

Leicestershire's leading carpet retailer

Multi-award winning family business established over 40 years

Friendly, expert advice on colour and texture will help you choose the perfect carpet for your lifestyle

Expert estimating

Free quotations with no obligation to order

Competitive pricing policy

Our own excellent carpet fitters (not sub-contractors) can:

- Carefully move your heavy furniture
- Uplift and take away your old floor coverings
- Attend to doors that need adjustment
- And of course - fit your carpets beautifully

Interest free credit available (subject to status - details in-store)

Easy access pay and display parking in Dover Street (Just around the corner)

OR Shop at home service available

100 Granby Street, Leicester

www.dalkardelliott.co.uk

0116 255 5043



One of the largest employers in Sileby - Homefield College - becomes a charity. Reaching out to the local community.

- From someone who crawls on the floor and shaves his legs to “resist” becoming a man..... to someone who discusses his future and works in a café.
- From someone who couldn't cope with a small flat and wanted staff with herto someone who is asking to move on to a shared house with minimal support
- From someone who had great difficulty in dealing with his emotions and changes to routines.... to someone who is able to talk about death of close ones
- From someone who struggles to deal with his own anger to someone who knows there are non-aggressive “options” which mean he can do well at a local college
- From someone who refused to go on a bus or train without “an adult”to someone who travels to nearby towns by himself without support.

Just a few examples of how students at Homefield College have been guided and supported to overcome their disabilities. These students are now more independent and make a real contribution to their community including running “Liquorice” - a shop in Sileby - with staff support.

Good inspection results by Ofsted and the Care Standards Inspectors have helped Homefield College to enjoy a reputation for high quality educational work for many years. Students travel from as far away as Sussex and the Scilly Isles to be residential students and an increasing number of students from local counties come on a day basis to learn from the specialists – its staff.

In June this year Homefield College became a charity with the support of a group of locally-based Trustees. Homefield aims to support its students in their own development and also reach out to local people to foster an improved understanding of people with communication difficulties, Autism and learning difficulties. Homefield is a small college which does not allow size to get in the way of its aims of innovation and pioneering work.

If you would like to know more about Homefield College please contact Anne Henson on 01509 814827 or email enquiries@homefieldcollege.ac.uk

Photo: A student in an Information & Communications Technology (ICT) session .



A1 PLASTERING

74 BARROW ROAD, SILEBY
LOUGHBOROUGH LE12 7LP

For plastering/ceramic tiling.

Fibrous plaster moulding
supplied and fitted.



Exterior rendering and
Tyrolean finishes.



Fully insured/Free estimates
30 years experience

Tel: (01509) 814711

MARK C. WALTON

Approved Electricians

B.B.A

Faults and Repairs
Test/Inspections
Certificates P.A.T
New Installations

71 Barrow Road
Sileby, Leicestershire

(01509) 813201
(07870) 525748

24 Hour Callout

Kids Driving You Mad? Got Some Spare Time?

Then why not escape from it all and view
the new improved Derrys.

We now have a large selection of:-

**Quality, Colourful and Decorative
Shrubs and Plants.**

Ceramic, Wooden & Decorative Pots.

**All Lawn Products, Turf, Grass Seed
and Lawn Food, Plant Foods, Compost
and Fertilisers.**

**Extensive Range of Fruit Trees, Plants
and Bushes, all Hedging Plants.**

Well stocked and equipped shop-garden.
Tools of every requirement.

Don't believe us?

Come and see for yourself!

All of your gardening wants and needs,
so come and visit Derrys Nurseries.

**THE NEW SPECIALIST POT
CENTRE WITH OUR EXTENSIVE
RANGE OF POTS.**

Escape from it all for an afternoon.

Derrys Nurseries.

Well Worth a Visit...

Open Every Day
All Bedding Now Available

DERRYS NURSERIES

Main St. Cossington
Tel: (01509) 812815

SILEBY PHOTOGRAPHIC SOCIETY



he Society had another successful Exhibition during the last week in October at The Village Institute. The week long event was opened by the Mayor of Charnwood and featured colour and monochrome prints, colour slides in competition as well as the usual themed slide show. This year the subject was the Leicestershire Round – a 100 mile long footpath around Leicestershire. Twenty of the members were each given a part of the walk to photograph and the resulting pictures were then arranged into order and a commentary with suitable music added.

The advent of digital photography has seen many more people take an interest in photography and many of our members have already converted to this format. If you are interested then the Society would welcome any new members of whatever standard to our regular Monday meetings at The Village Institute.

A selection of forthcoming meetings is listed below:-

- Dec 4 Slide show on the 'Orkney Islands' by Val Williams
- Dec 11 'Christmas in France' slides by Colin Machin & Mandy Sherrington
- Dec 18 Informal Evening with refreshments
- Jan 8 Comments on entries for the Annual Competition by the Judge Mike Armstrong
- Jan 15 Slide show on the 'North Cornwall Coastal Path' by Robert Sanders
- Jan 29 Competition Evening with judge Peter Jones
- Feb 5 'Visiting Uncle Sam' slide show by David Putt

B. YATES & SON

**Plumbing, Heating
& Gas Services**

**Bathrooms
& Showers**

CORGI Registered

Tel: 01509 816728

Mobile: 078088 30697

GLYNNE WILDBORE DOMESTIC APPLIANCE REPAIRS



**FULLY QUALIFIED
LOCAL ENGINEER**

*over 20 years experience
Repairs & Servicing in
your own home to most
makes of Washing
Machines, Tumble Dryers,
Cookers, Fridges,
Freezers, Vacuums,
Microwaves, etc.*

• **NO CALL OUT
CHARGE**

• **REALISTIC PRICES**

• **ALL WORK
GUARANTEED**

• **SPECIAL OAP RATES**

**Tel: Leicester
260 9773**

**Mobile:
07850 733 050**

*For a reliable and friendly
service*

TJN GARDEN MAINTENANCE

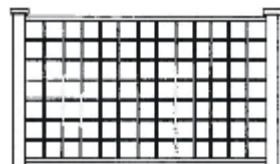
ALL FENCING SUPPLIED & ERECTED



OVERLAP



CLOSEBOARD



TRELLIS

- **Block Paving • Gravelling • Slabbing •**
- **Garden Clearance •**

Call Tony Neal on

Tel: 0771 2171016 or 01509 815467

LOROS LOTTERIES – HELP US TO CELEBRATE IN STYLE!

This year members will help to celebrate the 10th anniversary of the LOROS Lottery by taking part in their annual Bumper Prize Draw – with one difference. The top prize will be a fantastic **£10,000** with 350 other prizes totaling £4,000 to be won!

The Bumper Prize Draw traditionally takes place on the last Friday of the year and will take place this year on Friday 29th December so make sure you don't miss out. By joining the Lottery now you could be one of 351 lucky members who will get the New Year off to a great start.

The LOROS Lottery was first introduced to the hospice's fundraising programme in October 1996. The idea was to try to raise additional funds to ensure that the hospice was able to continue providing palliative care to local terminally ill patients and their families in the future. Even more services are available now due to the success of the lottery.

Everyone over the age of 16 is invited to become a member and enjoy a 1 in 60 chance of winning along with the satisfaction of knowing they are supporting a very worthwhile local charity. At just £1 per entry per week there couldn't be a better way of giving LOROS your continued support. You can choose how many entries per week you have and a personal, five digit number is allocated for each entry. Winners' cheques are posted out to the lucky members, there is no need to claim. With four different methods of payment there is bound to be one that suits you. Why not ring the Lottery helpline on 0116 2318430 today and find out more. You could be in the draw as early as next Friday.

Give an extra special gift this Xmas!

You can now buy an original present for Christmas or any occasion from the comfort of your own home.

A LOROS Lottery gift subscription currently gives the recipient a 1 in 60 chance of winning any one of 350 weekly prizes up to the value of **£2,000!**

Gifts comprise a unique lottery number, gift card, certificate, and car sticker and start from £10 for 10 weeks entry with no upper limit.

Why not tailor your gift to the occasion for example 21 weeks for a 21st Birthday or 40 weeks for a Ruby Wedding Anniversary.

For further information or to pay by card, telephone the lottery helpline on 0116 2318430.

all proceeds go directly towards supporting the work of LOROS.
Players must be aged sixteen years or over.

The Best Opportunity Yet to Help Shape the NHS **Join Your Local PPI Forum**

On 1st December 2003, the Community Health Councils (established in 1974), came to an end, and a new generation of public involvement forums began to develop.

The Patient and Public Involvement in Health Forum for Charnwood & North West Leicestershire is part of a nationwide network of bodies, established by the government, to increase participation by the public in local health decisions, planning, and issues in the delivery of services. They are totally independent of the NHS. The Forum has been set up by parliamentary statute and has a number of powers of inspection, scrutiny and consultation, and the access and ability to secure answers to probing questions.

The Forum is made up of volunteer members from all sectors of the local community, and recruitment is ongoing. No previous experience or any type of expertise in health is required, just a commitment and desire to improve local health services. Current forum members are from all walks of life, and across all age ranges. The commitment is a minimum of 2-3 hours a week and all travel & other expenses are paid. There is an optional rolling training programme, covering all kinds of topics from hospital inspections to working with the media. In a typical month you may find yourself meeting health professionals, visiting PCT and or hospital premises, finding out local people's views, and increasing your knowledge of health services in your area.

We would like to encourage anyone who would like to join the forum to contact us via any of the options below. We also wish to hear from anyone - either individuals or as a group - — who wish to be sent details regarding meetings in public, or to make contact regarding local health issues.

Contact details for the Forum are as follows -

MRH PPI Forum, 27 Copdale Road, Leicester, LE5 4FG Tel 0116 273 6506.
Email Leicestershire@patientforum.org

Thank – You for taking the time to read this, and we look forward to your input into your local PPI Forum.

B Gillman
Chair CNWL PPI Forum

Sileby Baptist Church News

Further to our last article in Talk @ Sileby in the summer, we have since changed the plans regarding our building renovations. Originally we were going to repair certain parts of the building and adding to it at a later date when funds permitted. We have been looking into the costs involved in our original plans versus the costs involved in a total rebuild. It seems it will be more beneficial, and not much more money involved, to completely knock the building down and rebuild it. It will be rebuilt basically the same as it is now, but with our original improvements added to it.

Since we last reported here, the Building Fund has risen from £133,000 to just over £156,000! The Summer Fete and Table Top Sale we did raised a little over £800 so thanks to everyone who came and supported us on the day, we really do appreciate it!

What's next...

Well our next fundraiser is end of November, in the form of a Christmas Fayre. There will be craft items for sale, including hand made Christmas cards and gift tags. Of course there will also be Christmas cakes (decorated and plain), mince pies and lots more. Please come along and have a look, you may find something for your 'Christmas box'. It may also be your last chance to have a nosey around the place before it's knocked down in December!



Soar Valley Brides

Gowns, Bridesmaid
Communion Dresses
Also Made to Order
Plus All accessories

Open
Tues, Wed, Thur, Fri & Sat

7 High St, Sileby, Leics Le12 7Rx

0
1
5
0
9
8
1
4
3
0
6

Made your Will Yet?	
<p>"I can come to your home at a time to suit you & give professional friendly advice on "Wills".</p> <p>Trusts & Estate Management. Our Standard Will £24.95 + vat</p> <p>Also</p> <p>Power of Attorney : Property Trusts: Will Storage</p> <p>Inheritance Tax Wills : Funeral Plans: Children's Trusts.</p> <p>Telephone Mrs Chris Thomas for an appointment or a brochure 08450 568571</p> <p>In Home Legal Services Member of the Society of Will Writers www.inhomelegalservices.com</p>	



From the archives: A view of St Mary's church.



Church



News

Sileby Methodist Church

Monday 11 th December 7.30pm	Ladies Circle Carol Service
Sunday 17 th December 10:45am	Morning worship
4pm	Carol Service
Sunday 24 th December 4pm	Christingle Service
Monday 25 th December 9.30am	United Service at
	Wymeswold Methodist

St Mary's Sileby, All Saints Cossington & All Saints Seagrave

Sunday 17 th December 5pm	Seagrave Traditional Carol Service
7pm	Cossington Traditional Carol Service
3.45pm	St Mary's Christingle Service
Sunday 24 th December 9am	Holy Communion Cossington
10.30am	All Age Service Seagrave
4pm	All Age Carol Service Seagrave
6.30pm	Carols by Candlelight St. Mary's
11.30pm	Midnight Communion St. Mary's
Monday 25 th December 9am	Christmas Praise Cossington
9am	Holy Communion Seagrave
9.30am	Family Service St Mary's
10.15am	Short Communion Service St Mary's

St Gregory's RC Church

Saturday 23 rd December	6.30pm	Mass Syston
Sunday 24 th December	9am	Mass Sileby
	11am	Mass Syston
	3pm	Carol Service Syston
	9pm	Mass Syston
Monday 25 th December	9am	Mass Sileby
	11am	Mass Syston

St Mary's News

Many of you will know by now that St Mary's Church has been closed for Renovation of Electrical & Lighting Installations (Rewiring).

Our electricians were installed in 1929 to replace the gas lighting. A report in 1997 identified that the fittings and wiring were old and well past their useful life. Following a Periodic Inspection in 2003 the overall assessment was that the installation was unsatisfactory and would not meet current Health and Safety standards. Earlier this year an Electrical Consultant was employed to draw up a specification for the renovation work required. This was put out to Tender and an estimated cost of £48,000 accepted. Work commenced on 2nd October and should be completed by 22nd December, in time for our Christmas services. At the time of going to press we now have funds of £33,000 available. This leaves a shortfall in funding of £15,000. If you would like to make a donation towards this important work please contact John Burton, 79, Homefield Road, Sileby, LE12 7TG, (Tel 815525), cheques should be made payable to "Friends of St Mary's." All donations will be thankfully received.

Richard Watson

Professional

Painter and Decorator

All aspects of decorating work carried
out from internal to external
Minor pre-paint repairs carried out to
woodwork

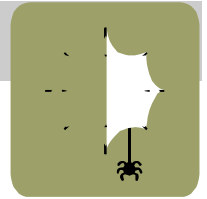
Free Estimates
No VAT

For a full personal service
call

Telephone: 01509 815753
Mobile: 07880 754011

5 Ainsworth Drive, Sileby,
Loughborough Leicestershire,
LE12 7QN





SPAM

SPAM is the term used to describe all the unsolicited email we receive in our inbox's in increasing amounts. Despite several governments trying to create laws to stem the flow nothing has so far been effective, the senders of the emails seem to stay one step a head of the law makers. Most SPAM is harmless, however, some can contain viruses that can cause the user to have problems so care must be taken in dealing with SPAM email.

Many service providers now include SPAM filters, (software designed to trap and remove SPAM before it reaches your computer) but these can sometime stop legitimate email as well as missing some of the nuisance ones.

It is estimated that 55 million SPAM messages are being sent every day.

I am often asked what SPAM stands for, it is commonly believed that the term originated from the Monty Python sketch show featuring a café selling SPAM meat as its menu items, the word SPAM being used repetitively during the sketch.

Web Site of the Day

Ever wished you had free access to a encyclopedia? Well the web site www.wikipedia.org gives you just that. This source of information is compiled by anyone, you can edit or add articles if you think that they are wrong or incomplete. This is also the sites downfall as when you read something you can not be 100% certain that what you are looking at is correct. Having said that a recent survey found that there were a similar number of errors on the web site, as in the most commonly known printed encyclopedia found in most libraries.

Sibley even has its own entry on wikipedia so why not surf over and take a look You may even feel like adding an extra line or two about our village.

NOW OPEN



WITHIN Costcutter

Riverside Pharmacy

SERVICES PROVIDED:-

- **FULL RANGE OF PHARMACY MEDICINES**
- **FREE REPEAT PRESCRIPTION COLLECTION & DELIVERY SERVICE**
- **NICOTINE REPLACEMENT THERAPY**
- **PATIENT MEDICATION REVIEWS**
- **EMERGENCY CONTRACEPTION**
- **FREE BLOOD PRESSURE MONITORING**
- **FREE BLOOD GLUCOSE MONITORING**

CALL IN TO OUR PHARMACY TODAY!!
RIVERSIDE PHARMACY
WITHIN COSTCUTTER SUPERMARKET
112-114 BARROW ROAD
SILEBY LE12 7LP
TEL:- 01509 817360

Sileby Fruit & Veg Show 2006

Saturday 16 September saw the holding of the first Sileby Flower and Vegetable Show since 1997. The day was overshadowed by the sudden death the previous week of one of the organisers Norman Byatt, but with the support of his family and friends arrangements for the show continued and it was held in his honour.

Over 150 entrants submitted their produce for the scrutiny of the three judges, Ian Willis, Neville Price and Dave Callison, who sniffed, squeezed and sampled their way through the entries which ranged from giant leeks, dahlias and chilli chutney to victoria jam sandwiches.

All of the produce was auctioned in the evening by Brian Hubbard to an appreciative and generous audience at the Conservative Club. Their generosity plus that of those who took their chances in the raffle raised the sum of £1145.60 which will be used to support local charities and the charity nominated by Norman Byatt – the Brain Injury Unit at the Leicester General.

The overall winners in the events were:

Best in Show (Adult) – Mick Mills

Most Points Awarded in Show – Mick Mills

Top Tray – 1st Simon Smith, 2nd Margaret Price, 3rd Mick Mills

The Norman Byatt Memorial Salver – Mick Mills

The Norman Byatt Best Onion In Show – Mick Mills

Best Chrysanthemum in Show – Mick Mills

Best in Show (Child) – Sarah and Lewis Yates



The Flower and Vegetable Show will be held next year at the Conservative Club on Saturday 15 September, for further information please contact Melvyn Hoyes on 01509 812490.



Your Letters

Send you letters to the editor. Please include your name and address (not for publication if you wish).

An open letter to Tony Bull,
Leicestershire CC Highways.

Thank you for your letter and plan outlining the proposed extensions of the parking restrictions in Sileby.

Your proposals, like those of Central Government, seem to be aimed at patching over the cracks and studiously avoiding the core problems:

- I. the exponential increase in the number of motor vehicles
- II. their rational regulation for the greater benefit (not inconvenience) of all.

1. What system/mechanism is in place/proposed to ensure that all existing and new restrictions are *OBEYED*? Many drivers totally, often dangerously, disregard existing restrictions with impunity, regardless of hazard caused, particularly those at:

- I. NatWest cash point – Barrow Road
- II. Tesco cash point – the High Street

- III. Primary School – King Street
- IV. Horse & Trumpet – Barrow Road, by delivery drays
- V. Middletons in Brook Street by oil and creosote tankers.

2. Yes! I am in favour of your extending the parking restrictions in Sileby, provided that they can be successfully enforced. However I am in favour of simplifying the whole system, based on the assumption that governments, both central and local, provide roads for the easy and consistent movement of traffic:

- I. **No** hesitating, stopping, waiting, parking on all through roads with the exclusive exception of emergency vehicles
- II. constructed bays for bus-stops so that the bus can and must pull **off** the road
- III. facilities to be provided for delivery vehicles to pull **off** the road
- IV. house planning to make provision for the storage of

- V. at least two cars car-parks to be built near terraced houses in which to enable each householder to rent/buy a 'home' for their car(s)
- VI. underground car-parks to be a mandatory feature of blocks of flats
- VII. no delivery vehicle of more than two axels to be allowed on 2-way roads during the 'day'.

Sibley, I am sure, would be a good subject for such a pilot scheme. Penalties for transgression could include the removal, impounding, confiscating of any offending vehicle. Once such a system was in place and working, people would soon adjust!

*Yours sincerely,
Bernard Sherratt.*

History Exhibition.

The time has come round for the 2nd Sibley local history exhibition. After the success of last years event, we have been asked to put it on again. In 2007, we have the Community Centre for 2 days, most probably at the Easter weekend, the 7th-8th April.

With these dates in mind, and

also thinking back on the last event, is there anything that you would like to see in this next exhibition ? Obviously, there were subjects that we didn't cover in the last exhibition due to space, like Family life, Religion and Pubs, which we may rectify next time round. But we'd like to know what you liked and also what you didn't like, or things/subjects that you would like to see more of this time round.

On that note, we also would like to make an appeal for any photographs of workplaces, general views, family get togethers and the like, or memorabilia dealing with the village. As per last year, we can copy, photograph or scan items and usually have them back to the owners within a day or so.

We look forward to your responses.

*Eric & Pete
Sibley Heritage Wardens.*

Sileby Parish Council

41 High Street, Sileby – 01509 813075

SILEBY COMMUNITY CENTRE

Sileby Community Centre has a large Main Hall with stage, Sports Hall, Bar, plus other rooms available to hire at competitive rates. Anyone wishing to make a booking please contact the Parish Council Office on 01509 813075 or visit our website www.silebyparishcouncil.org.uk

EVENTS AT SILEBY COMMUNITY CENTRE

Theatre Productions:

Sileby Parish Council is promoting - The Time Machine

Sunday 4th February 2007, 4.00pm.

A family show with live music, song and hilarity for adults, young people and children. Tickets will be available from the Parish Council Office.

Sileby Heritage Exhibition – Saturday 7th & Sunday 8th April 07.

This popular event is to be repeated in 2007. Eric Wheeler and Peter Campbell, Heritage Wardens for Sileby are hoping to add more exhibits with different sets of photographs.

CIVIC AWAY DAY

Mayor of Charnwood, Councillor Ken Pacey and his wife are to visit Sileby on 3rd November 06. They are interested to speak with local residents and will visit local businesses.

CHRISTMAS LIGHTS 2006

Please come and join us for this special festive event which will be held on Friday 1st December, entertainment will commence at 5.30pm and the festive lights will be switched on at 6.30pm on Martin Walk. A Victorian Market will be held in the Community Centre and refreshments and mince pies will be served. Syston Band will play festive music in the main hall until 8.00pm. There will be rides for the

children and Santa will visit. Brook Street and Back Lane will be closed for the event.

SILEBY FLOOD WARDENS

The Environment Agency is looking for volunteers to become Flood Wardens Sileby. Anyone interested please contact Sileby Parish Council.

SILEBY MEMORIAL PARK

Arsonists have destroyed five litter bins, a dog waste bin and children's play equipment on Sileby Memorial Park. Estimated damage is £20,000. Anyone with information please contact Leicestershire Police 0116 222 22 22. Sileby Parish Council **will** prosecute offenders.

COST OF VANDALISM/ANTI SOCIAL BEHAVIOUR ON AREAS UNDER THE RESPONSIBILITY OF SILEBY PARISH COUNCIL JUNE 06 TO SEPTEMBER 06

The cost of vandalism/anti social behaviour is paid from the Parish Council Budget which is part of the Council Tax charges. Everyone in Sileby paying Council Tax pays for vandalism.

Memorial Park including damage by arson

£20,000 approximately

Damage to fencing – Greedon Rise Play Area

£ 50

TOTAL VANDALISM/ANTI SOCIAL BEHAVIOUR COSTS
£20,050

SILEBY PARISH COUNCIL POLICY

It is Sileby Parish Council's policy that no action is taken when correspondence or information is received anonymously.

Children's News

Class of 2006

There comes a time in every Nursery class when its time to move on to 'big' school. This year Sileby Day Nursery held a graduation party for the pre-school class. Fun and games where laid on during the afternoon for the children. Later parents where invited to be present during the formal ceremony when each class member was presented with their graduation certificate.



Registered Child Minders.

Annette Bowdrey - 01509 814078/ 07986 656566

Janet Palmer - 01509 816610 Highgate school before and after school Wednesday to Friday.

Sileby Day Nursery

**'A great place for your child to play and
learn'**

We offer....

- **Quality, registered childcare from 6 weeks
to 8 years old.**
- **Open daily from 8am to 6pm for 51 weeks a
year.**
 - **Nursery grants for 3 & 4 year olds.**
 - **Secure indoor and outdoor facilities.**
 - **Out of school club with transport.**
 - **Flexible sessions to suit your needs.**
 - **Fresh meals daily prepared.**

And lots more !

Hurry as places are filling fast!!

**Call
Tracey Brown**

(01509) 812300

231 Cossington Road, Sileby, Leics LE12 7RR

Children's News

Squeals On Wheels Mother & Toddler Group.

Squeals on Wheels meets every Thursday morning 9.30-11.30am during school term time at the Pochin Hall, Mountsorrel Lane, Sileby.

Our group began in the late '80's and in 2006 is still welcoming any mums and dads who wish to spend a couple of hours of chat and companionship.

We have a good selection of toys and refreshments for parents and toddlers are included in the 50p cost.

At Christmas we have a visit from Father Christmas and a short carol service. During the year we have several themed lunches, i.e. Bonfire, valentines and Mothers Day. We have occasional craft mornings depending on the age of the children. This year "bumps" have become babies so our making things time is in the future.

In the summer term we had our annual trip to Meadow View Farm where the children were able to see animals and have a time of play and refreshment before returning to the Pochin Hall for a picnic. Our final event was a Bouncy Castle on the last day of summer term.

We have opened again in September for the Autumn term. For more information contact Pam on 01509 813808, or Marion on 01509 812889.



Rainbows Lottery Gift Vouchers

Stuck for that perfect present? Our Lottery gift vouchers are an ideal gift all year round.

Each gift voucher comes with a special gift card, and can be purchased from as little as £5. The vouchers are an ideal present to be given on a birthday, an anniversary, at Christmas or just to say 'thank you!'

Not only could the recipient of your gift have the chance to win £1,000, but you will also have the pleasure of knowing that the money is going straight back into the Hospice.



"What a terrific idea for a present! I've bought these vouchers for friends and family knowing that all the money goes to Rainbows and there's a chance of a £1,000 win too! Everyone was delighted – what could be better?"

What happens next?

If you would like to purchase Rainbows Lottery Membership as a present, then you can do the following:

Online: Visit **www.rainbows.co.uk** and go to our online shop to purchase. (Available online in £5, £10, £25 and £50 denominations).

Telephone: Call the Lottery on 01509 638 008, give us details of who the gift is for and we will do the rest.

Email: Email the Lottery at: **lottery@rainbows.co.uk** with your specific requirements and the rest will be done for you!

(Lottery vouchers will be returned to the purchaser unless otherwise notified)

Rainbows Lottery Sales Representatives

East Midlands' charity Rainbow Children's Hospice is appealing for part-time and voluntary lottery representatives from across the East Midlands to join its Lottery team and help promote the Hospice's weekly Lottery draw.

"We currently have a team of Lottery Representatives who all contribute greatly to supporting the Lottery. Becoming a lottery representative offers the chance to earn an extra income, the flexibility to control your own working hours, a way to meet new people, and the opportunity to make a personal and valuable contribution to the fundraising efforts of the Hospice" said Rowan MacMillan, Rainbows Lottery Sales Executive. "Without the support of local people, who go out into the community to recruit new players, the Lottery would not be as successful as it is today".



LANZA

- Open 6 days a week
- Two late nights - 8pm
- 365 London trained
- Designer haircuts

from **£21.00**
to **£49.00**



Hairdressing with passion

01509 812968

57 The Banks Sileby Leicestershire

www.lanzahair.co.uk