

# talk @ Sileby

## Village Newsletter

Issue 32 Summer 2012



Written by Sileby people, for Sileby people

# Central Business Services

01509 816150

Accountancy  
Bookkeeping  
VAT  
PAYE  
CIS  
Tax  
Management  
Business Advice



A local firm providing a helpful, friendly service to local businesses of all sizes. Call us for a **FREE** initial discussion about your needs.

[www.centralbusiness.co.uk](http://www.centralbusiness.co.uk)

**Oak Business Centre**

**79-93 Ratcliffe Road, Sileby, Loughborough LE12 7PU**



## Inspirations Floristry

Come and visit our new shop on the High Street in Sileby.

We can create all styles of floral work for every occasion, from traditional and hand-tied bouquets and arrangements for birthdays, anniversaries, weddings, funerals and the more unusual floral creations to provide that additional wow factor. Delivery available.

[www.inspirationsfloristry.co.uk](http://www.inspirationsfloristry.co.uk) \* 01509 815505



One of the suggestions from the village appraisal ten years ago was that there should be a regular magazine reflecting the activities in the village together with other articles of local interest. Subsequently a Committee was set up led by the late Roy Brown as Magazine Co-Ordinator.



Roy was the ideal person to lead the group as he knew Sileby intimately and always wanted to help and serve the residents of the village no matter what the problem was. Roy guided the Committee wisely when there was a problem and through his contacts was able to secure valuable funding. He served as a Parish Councillor, a Borough Councillor and was given the finest accolade when he served as Mayor of Charnwood. We shall miss him dearly.

In the ensuing decade the personnel of the magazine committee has continued to change and with the passing of Roy only two of the original committee remain. There have sometimes been problems on the way but we have settled into a routine of three issues per year – at Easter, Summer and December.

The magazine is financed by the advertisers, usually from the village, and with the village at heart. We are extremely grateful for their continued support.

The small committee comprises Sileby residents who are all dedicated volunteers each contributing their own particular local interest. Once the magazine is published it is then distributed to your home by a team of some 40 volunteer deliverers.

Lifelong Sileby resident and Parish Councillor, Ken Jones, is the new magazine Co-Ordinator, he is determined to uphold the values that Roy believed in and ensure that your village magazine continues to thrive.

Lionel Blower

## Copies of talk@Sileby

Copies of talk@Sileby can be obtained by post at a cost of 50p per issue which includes p&p. Please make cheques payable to: Sileby Village Newsletter

Back issues of talk@Sileby can be viewed on the internet at [www.sileby-village.co.uk](http://www.sileby-village.co.uk)

# Contacts

## Editor:

Dave Palmer, 60 Heathcote Drive, Sileby,  
(01509) 816610.  
Email [d.r.palmer@talk21.com](mailto:d.r.palmer@talk21.com)

If you would like to give your feedback, articles or letters these can be sent to the Editor or you can now use the internet forum at

**[www.sileby-village.co.uk](http://www.sileby-village.co.uk)**

## Advertising:

Lionel Blower  
Telephone 01509 816287  
Email: [ltbrib@btinternet.com](mailto:ltbrib@btinternet.com)

Printed by  
Norwood Press. Ellistown 01530 262020

The advertising rates for talk@Sileby are listed below

Quarter Page £30    Half Page £50    Full Page £80  
Inside front/inside back cover £105.00    Back cover £135.00  
10% discount for booking and paying for three insertions in advance

### These prices are per issue

*Disclaimer: The views expressed in this magazine are the views of the contributors and not necessarily the views of the talk@Sileby team*

## The talk @Sileby Team

Magazine Co-Ordinator	Ken Jones
Editor	Dave Palmer
Secretary	Pat Haswell
Treasurer	Lionel Blower
Societies Co-ordinators	Lionel Blower
Auditor	Richard Kinton

Front Cover Picture: Despite heavy rain on the day Sileby Gala was opened by the children of Redland's and Highgate School May pole dancing. A big gathered to see them and the day proved to be very popular.

# talk @Sileby

Your community magazine is delivered to every home and business in Sileby; that's about 3,500 addresses.

It is published three times a year: in November just prior to the Christmas lights 'switch on', in Spring around about Easter and in the summer.

We have no political, commercial or religious allegiance and aim to be impartial and independent. We are entirely self funding through advertising revenue.

We are here solely to promote Sileby, its businesses, residents, clubs, societies, associations, schools and churches.



# SUNRISE *eggs*

## Sponsors of Sileby Town Cricket Club

Sunrise Poultry Farms Ltd.  
Seagrave Road, Sileby,  
Leicestershire LE12 7NJ  
Tel: 01509 812441  
Fax: 01509 814601  
email: [info@sunrise-eggs.com](mailto:info@sunrise-eggs.com)  
web: [www.sunrise-eggs.com](http://www.sunrise-eggs.com)



### CHIROPODY – PODIATRY FOOT HEALTHCARE

Modern foot clinic  
tailoring foot health  
& cosmetic solutions  
for the entire family.



the footings  
healthy foundations for life

Julie Astill: MSSCh, MBChA, HPC Registered

Tel: 01509 41 44 55

26 High Street, Barrow Upon Soar

## B. YATES & SON

Plumbing, Heating  
& Gas Services

Bathrooms  
& Showers

Gas Safe  
Registered

Mobile: 078088 30697





## **Great Summer Offer !**

### **Sileby Day Nursery**

**15% discount off 1st invoice when you register  
a child by 31/07/2012.**

**"a safe and stimulating place to play and learn"**

Quality childcare from 6 weeks to school age  
FREE funded hours for 3 & 4 year olds  
Safe & secure environment with outdoor CCTV  
Fresh, daily prepared meals  
Special dietary requirements catered for  
All weather outdoor play area  
Car parking  
Full time & part time sessions available  
Open 7.30am to 6pm  
\*Music sessions by Music go Round

**To secure your child's place please contact nursery  
manager Tracey Brown on 01509 812300**

***Brian, Joan  
& Everards***

*extend a warm welcome at*

***The Free Trade Inn***

*Cossington Road, Sileby*

***Everards Fine Traditional Beers***

## **A message from Nicky Morgan MP**

**MP for Loughborough, Shepshed, Quorn, Barrow, Sileby, Hathern, Mountsorrel Castle and the Wolds villages**

I hope you had a great jubilee weekend. What an historic occasion – not something most of us are going to see again. It was great to see Sileby Conservative Club decked out in all the union jacks.

I recently visited Homefield College in the village. Meeting the Principal and his Deputies and hearing about the College's future plans. I also met some of those benefiting from the College's great work – including visiting a computer class and a cooking lesson, as well as seeing all the preparations which go on before a trip outside.

I continue to work with Sileby parents and your County Councillor, Richard Shepherd, on the issue of school bus transport between Sileby and Barrow for those families who lost their school bus service within the last 12 months. In light of comments made by the Local Government Ombudsman, following complaints made (including by Sileby families) to the LGO, Leicestershire County Council has now reviewed their walking route assessment criteria and we expect the Sileby to Barrow route itself to be reviewed soon.

I continue to work with Sileby resident, Mary Cort, who is campaigning for girls between 20 and 25 to be screened for cervical cancer. Mary lost her much loved niece, who was the mum of two young daughters, to cervical cancer at the age of 23. In July 2011 I took part in the race for life with Mary and her daughter Shannon to help raise awareness of this cause but we need your support - <http://www.cervicalcancerscreeningpetition.com/>

Finally I would like to say how wonderful it was to see St Mary's so packed for the funeral of Sileby Councillor and former Charnwood Mayor, Roy Brown. Roy was a fantastic councillor and advocate for Sileby. I will miss his guidance and kindness.

Pictured: Nick visits Homefield College, Sileby.



# **SMARTLY STITCH TAILORS**

**CLOTHING ALTERATIONS & REPAIRS**  
**Professional Alterations and Repair Work**  
Trousers, Jackets, Coats, Skirts, Dresses and Many Other  
Garments. New Zips Fitted

## **Made to Measure Curtains**

Alterations also undertaken

## **Leather Garments Bags Repaired**

Altered and Repaired

And zips fitted

## **PROFESSIONAL**

## **DRY CLEANING AGENTS**

**Motorbike, Equestrian & Leather Clothing**  
**Repaired and altered**

**SMARTLY STITCH**

## **TAILORS**

1a Little Church Lane (Next to St Mary's Church)  
High Street, Sileby LE12 7NE  
[www.smartlystitch.co.uk](http://www.smartlystitch.co.uk)

**TEL: 01509 815658**

## **Rural Skills**

Stepping Stones in partnership with Leicestershire CC and Charnwood Borough Council are running some rural skills training such as Dry Stone Walling, Coppice Management, Hurdle making and Hedge laying. For more details of the dates for these training sessions check out the website at [www.leics.gov.uk/stepping\\_stones](http://www.leics.gov.uk/stepping_stones) or call 0116 305 7264/7221.

Email: [steppingstones@leics.gov.uk](mailto:steppingstones@leics.gov.uk)

Stepping Stones is a project that aims to protect and enhance green space in the parishes around Leicester.

## **HAVE YOU MADE YOUR WILL YET?**

**Or is your old Will out of date?**

**MAKE SURE YOUR ASSETS GO TO THOSE YOU LOVE.**

**For Wills - Trusts -**

**Estate Planning & Lasting Power of Attorney**

**We come to you! For an appointment or a brochure telephone**

**Mrs Chris Thomas, Mrs Pam Draycott or Wayne Cooper**

**01509 507334 (Home)**

**08450 568571 (Office)**

***In-Home Legal Services***

**90 The Meadows, Shepshed, LE12 9QN**

**Member of The Society of Will Writers**

**We have our own Company Lawyer and are part  
Of the Skipton Group of Companies**





# sip & surf

Internet Café

16 Market St Loughborough T:01509 323007

eBay Enterprise - Gift Shop

Homefield College



Sip & Surf is Homefield Colleges Newest Enterprise. Opened in December 2010 Sip & Surf houses an internet café, a gift shop and an eBay enterprise in which students attend placements to gain vocational and work based skills.

Opening Times: Monday—Saturday 9am-4pm

This voucher will entitle you to a hot or cold drink and a cake for just £1.50 (selected cakes and drinks apply, please ask within)

Voucher expires 31/08/2012

## What is Homefield College ?

On the number 2 bus one Thursday I found myself sitting near a group of animated young people – they were chattering happily about their morning in Loughborough. Talking to one of the ladies accompanying them I learned that they were all students at Homefield College in Sileby. Though I knew of the existence of the College, I didn't know anything about the courses or students. So I made an appointment for a visit.

In the busy reception area I signed the visitors book before meeting Principle Gerry Short. He took me to a pleasant lounge (which I later learnt was part of a flat used for teaching purposes) where he explained to me how the college came into being, and told me about the courses offered.

The building which now houses the main campus college was originally a Childrens' home which closed down 26 years ago. The building was bought by the O'Brien family who opened it as a residential care home for people with learning disabilities, funded by Social Services.

Homefield College, now a registered charity, is a Specialist Further Education College offering courses for students with learning difficulties &/or disabilities. As such it is subject to regular inspections by Ofsted and the Care Quality Commission. In addition to the main building the College operates in seven 3 – 4 bedroomed houses in Sileby and has access to an area on Cossington Road which is used for Horticultural courses. Employing 170 full and part-time staff, mostly from Sileby, the college is one of the largest employers in the village.

Most students come to the college in their late teens – there are places on the 3 year residential courses in life skills or vocational subjects for 25 students, and up to 25 day students. The aims of the courses are two-fold, primarily aimed at helping the students learn how to lead (as far as possible) independent lives, and to live in a normal living and working environments.

Each student is assessed, their strengths and weaknesses identified and realistic long-term goals set before a learning programme is designed for them.

For all students routines for personal care are established. They learn to collect their own laundry and use washing machines, dry and then iron their own clothes, plan menus, shop and prepare meals in fully equipped domestic kitchens. In addition they may (depending on their abilities) learn to use public transport, libraries, restaurants and public leisure facilities.

Within the main campus there is a flat and a bungalow where students can get the feeling of living independently but still within the familiar environment of the college.

Some students achieve the level of skill required to move into a fully equipped residential home with three or four other students. Here, with an appropriate level of support both day and night, they deal with their own laundry, shop, cook and clean for themselves. Currently there are 17 long-term residents, the oldest in their forties, leading relatively independent lives. There are three ex-students living in their own flats and working in the community, with continued support as required.

Students have the opportunity to study a number of vocational subjects, carefully selected to reflect their abilities and interests. Working in "Sip and Surf" in Loughborough and "Barrow of Treats" in Barrow gives students the opportunity to learn something of the catering business and to gain confidence through interaction with the general public. This can lead on to suitable employment with mainstream employers. Training in woodwork and horticultural skills is available for students showing interest and aptitude in the subjects. These courses are backed up by one day a week on

either work experience in local businesses, or on a relevant course in a local Further Education College.

From Sip and Surf some students operate an eBay enterprise for the general public. One third-year student is employed one day a week in the café of a local supermarket (going to work solo on a 27 bus) and a graduate student has part-time employment in a Baker's Oven outlet. Other graduate students are employed by the college in different roles and are paid the same as other staff.



Pictured: Horse riding on a sports session

As every parent knows, it's scary teaching your child to safely handle a kettle to make tea, or a sharp knife to help in the kitchen – it is even harder when your son or daughter has disabilities which make learning more difficult. Imagine the joy of the family visiting Barrow of Treats (the college's café in Barrow upon Soar) when they watched their son expertly pilot a steaming Espresso machine as it hissed and gurgled to make perfect cups of frothy coffee. “It's wonderful – we were anxious about letting him use a kettle at home”. Now a graduate, he is to be employed by a café.

As one staff-member told me “most of the students can do almost everything for themselves, it just takes them a lot longer to learn how”. To enable students of all abilities to move about the college safely, and know where they should be their timetables and other information notices have pictures illustrating the activities. Each day student’s photographs are placed in the appropriate places on a large timetable, indicating their planned activities for that day. Posters have been designed illustrating graphically how to do various activities, eg how to hold a rabbit so that it is comfortable, and what to do

Pictured (Left) a pictorial fire alarm plan and (below) a time table plan



if a fire alarm is sounded.

Besides the life skills courses students are offered art/craft courses, drama and dance instruction. Woodwork, to produce marketable products, digital photography and the use of computer software, the cultivation of vegetables and flowers. Students produce their own radio and TV programmes for staff and residents of the College.

For students who are on residential courses there is a wide range of leisure during evenings and weekends - riding, swimming, karting – some may go to evening classes at local schools – groups go camping during summer weekends.

The college has a minibus which is used to take students for outings to places of interest. One sunny, windy day I met one group just setting off to trudge up Borough Hill. Five students from the college represented East Midlands in the Special Olympics, achieving Gold and Silver medals.

My visit left me with an impression of cheerful optimism – focussing on the young people's abilities and developing them rather than dwelling on their disabilities.

## Sileby Tennis Club

Sileby Tennis Club has opened their courts this year to two youth groups in the village. The Baptist Youth Group and Sileby Brownies enjoyed learning the basics of playing tennis and playing against the ball machine.

Coaching at the club continues with Steve on a Wednesday afternoon 4.15pm-5.15pm for all juniors. The cost is 6 lessons for £18 or £3.50 a lesson. So come on learn a new sport and new skills. Give football a miss for the Summer!

For more information look on the Sileby Village website.

\*the attached photo is of Sileby Baptist Youth Group



**GLENN LEWIN  
BUTCHERS**  
SUPPLYING QUALITY  
LOCAL MEATS  
TO THE RETAIL &  
CATERING TRADE



**1 RATCLIFFE ROAD, SILEBY  
LEICESTERSHIRE, LE12 7PU  
TELEPHONE 01509 812246**

All our fresh meats are sourced  
from local farm assured farms  
within 10 miles

No GM products are  
used in animal feeds

All produce is  
slaughtered locally

All produce is prepared by  
ourselves on our HACCAP  
approved shop premises

Beef is hung for 28 days to obtain  
it's finest eating qualities

Traceable from the  
farm to the plate

Committed to  
customer satisfaction

# Barrow of treats

*22 High Street, Barrow upon soar*  
*01509 416561*

## SWEETS-

*Jars/Baskets/ Party bags/  
Wedding favours and  
more .....*

## INTERNET

*50p per half an hour*

## CAFE

***Bring this  
voucher and  
recieve 1 free  
drink up to the  
value of £1.70***

*This cannot be exchanged for  
money or to purchase anything  
else*

*Expires 31st August, 2012*

*We use as much locally/  
organic produce as possi-  
ble and a lot of what we  
produce is homemade.*

*Opening times – Monday  
to Friday 9.30-3.30,*



(extracts from the National Newspaper Archive)

Background to the Unrest:-

Leicestershire Mercury Saturday July 15<sup>th</sup> 1843

### THE VILLAGES

*Sileby*. -The operatives of this village have been oppressed in the most infamous manner by the truck system. Instances are not wanting of young girls having been employed seaming for years, and not taking a single particle of coin, of any description, during the whole time. Others pay their rent, tailor, shoemaker, and every other expense they incur by grocery or drapery, received from the manufacturer in return for work. One would almost fancy that the inhabitants of this village had formed a community to discountenance partially or totally the use of a circulating medium in the shape of coin. We hope some kind friend of these oppressed operatives will step forward and help them to obtain the right of laying out their money at the best market they can, instead of having to take more goods than they can possibly consume, at a monopolist price, so as to compel them to part with them at a great discount, to enable them to provide themselves with a house and other necessities.

Leicestershire Mercury March 10 1849:-

Thomas Newby, Thomas Fisher, Jesse Breward, John Taylor, William Bailey, Daniel Knight, Thomas Taylor, Jonah Dakin, and Thomas Bailey, of Sileby, were charged with riotously and tumultuously assembling at Sileby, on Monday last, and assaulting Goodman Oswin, Richard Dakin and Henry Calladine ; and Joseph Calladine, Henry Smith Jonah Dakin, Thomas Taylor, William Bailey, Robert Garner, John Pole, and Daniel Knight, of the same place, were also charged with a similar offence, on Tuesday last. Mr. Inglesant appeared with defendants, and the cases occupied the Court from half-past one o'clock until late in the evening, the proceedings of the Bench not having terminated until about half-past eight o'clock. Those who took part in the first day's disturbance only, were summarily convicted as follows : Jesse Breward, who was sworn to as having assaulted Oswin and Dakin, was fined £5 or two months' imprisonment, in each case. Thomas Newby convicted of assaulting Oswin, was fined £5, or two months, Thomas Fisher, John Taylor, and Thomas Bailey, convicted of assaulting Calladine, were fined £5 or two months; and all five were required to find sureties for their good behaviour for six months after the expiration of the periods of their imprisonment. The other eight were committed to the Assizes - Some of them, we understood, found bail. For particulars of these cases see another column.

Leicester Chronicle 7<sup>th</sup> April 1849:-

LOUGHBOROUGH Petty Sessions, Thursday, April 5. Before the Revs. J. Dudley and W. Acworth. and C. M. Phillippo and E. C. Middleton. Esq. Goodman Oswin, of Sileby, charged "Wm. Sharpe, of that place, and Mary, his wife, with using threatening language towards him, by which he was in great bodily fear, and prayed they might be required to keep the peace. It appeared from complainant's evidence, that ever since the trial of the parties at the late assizes, for a riot at Sileby, he had been the object of popular indignation, and that the defendants (who had two relatives convicted for that affair) had used threatening language towards him. Wm. Sharpe was required to

be bound in £10 for himself and wife for the next six months. — During the investigation of the case, some of the most contradictory statements were made ever heard in court, Oswin swearing positively that on the 26th. Mrs. Sharpe threatened him before ten or eleven o'clock. Defendant declared positively that she was not up until about two o'clock, and called as a witness Mary Lee, who swore to helping defendant dress herself about two o'clock, while Oswin called Dakin, the constable, who swore that the defendant came to his house twice before 11 o'clock on the 25<sup>th</sup> and .....time told him that the defendant had been threatening him. Dakin was instructed to see if a case of perjury could not be got up again at some one of the parties. Phoebe Sharpe (a relative of the above) was also charged by Goodman Oswin with at divers times threatening him, and on the 26th with threatening to poison him. The Bench thinking the former case might act beneficially, admonished defendant, and adjourned the case for a fortnight, intimating to her that if she behaved peaceably she might hear no more of the case.

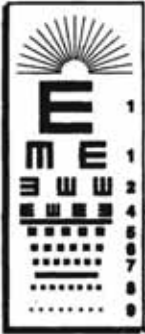
Leicestershire Mercury 10 May 1849:-

The Sileby Riot.—Thomas Breward, who took part in the late riot at this place and absconded, has been apprehended, and committed for trial for the offence.

Leicester Chronicle 19<sup>th</sup> May 1849

Thomas Breward was committed for trial on the charge of being a principal in the riot at Sileby, on Tuesday, the 6<sup>th</sup> of March, when the windows of Oroodman work-knitter, of that place, were broken and his person and life threatened, for which offence several persons are already suffering the penalty of the law.. “

Carole Campbell



# **A.G. & D. RICHARDS**

## **OPTOMETRISTS**

A. G. Richards, B.Sc., M.C.Optom. & D. Richards, B.Sc., M.C. Optom.

**22 KING STREET, SILEBY, LEICESTER, LE12 7NA**

**Tel: (01509) 812088**

**EYE CARE for the WHOLE FAMILY**  
**Glaucoma screening and advice on general eye care**

Large range of frames from designer to budget  
Full range of contact lenses — NHS patients welcome  
Home visits available — Accessories and solutions

**We take time to provide you with the right eye care**

## ‘Diamond Jubilee Celebration – June 1897

Ratcliffe College celebrated the Diamond Jubilee of Queen Victoria on 22nd June 1897. The following is a report of the celebration in the Ratcliffian magazine of that year.

“Spite of gloomy predictions and contrary to the expectations of a great part of the people who are inhabitants of these islands under the rule of our Most Gracious Sovereign, Tuesday, 22nd June was one of the brightest and most enviable days we have had for some time past.

After breakfast, both divisions were marched in fours on to the terrace where Barnby’s “Victoria our Queen” and “Rule Britannia” were sung by a hundred loyal, though youthful, subjects of Her Majesty. Then the flag was hoisted as the national anthem burst forth from the hearts of all present.

In the afternoon after a launching a few air balloons there followed bathing to freshen us up for what was to follow.

Then at tables laid out of doors in the shade in a line parallel to the refectory a sumptuous repast was attacked.

Towards the end of the meal more balloons were sent up and with better effect than in the more glaring light of the afternoon.

A move was later made towards the field at the back of the farm, on the slope towards Sileby. Here for about a week proceeding, Father Davies had deposited waggon loads of faggots and other materials suitable for a bonfire which was some twenty feet high. Our name had been forwarded to Colonel Milward and inserted in the printed list of over two thousand bonfires that were lit in the British Isles on June 22nd.

Our fireworks and balloons with magnesium lights were let off near the bonfire, and a large crowd of people had assembled on the road from Ratcliffe, Sileby, Syston and other villages to witness the pyrotechnic display.

A tar barrel had also been lighted on the First Division football field on the side of the old ash tree and was still burning on Friday morning.

Were any proof needed of the success of the outdoor display at night, it would be sufficient to add that two Sileby councillors attended on the farm Procurator next day and offered their congratulations.”

Maybe we will see later in the year how the current staff and students at the college celebrated the Diamond Jubilee of our Queen Elizabeth II



### Charnwood Hearing Aid Centre

Lynne Leeming, MSc RHAD BSHAA

Your local Widex specialist

Existing hearing aid users welcome

5 Staddon Road  
Anstey  
Leicester  
LE7 7AY

Telephone: 0116 236 6633

Free parking in the Nook car park



## **A Significant part of Sileby's past revealed :**

### **Excavations at the Miller Homes development, Seagrave Road.**

For the past two years there has been significant archaeological work carried out at the new housing development site off Seagrave Road. Miller Homes have initiated and funded an intense programme of archaeological survey and excavation prior to building work commencing on the site. Before work began it was thought that there would be little of archaeological value to be found as hardly anything had been discovered previously to suggest otherwise. However, as time went on it was soon realised any such notions were mistaken.

One of the first stages of field archaeological investigation involves surveying. A geophysical survey (using specialist survey equipment which detects underground features) of the whole field was undertaken to try to ascertain what remains existed, if any. To the amazement of the archaeologists this survey produced a plan showing a myriad of different lines and shapes for them to interpret. At first glance the lines looked like they belonged to a settlement at the north end of the site. There also looked to be a trackway heading down the hill parallel to the current Seagrave Road and running toward a small enclosure at the bottom of the site near to Jubilee Avenue. In October 2011 Albion Archaeology was commissioned to excavate a large number of trial trenches to see if the lines on the survey tallied with the geophysical survey and if the features discovered could be dated by any artefacts found within them. Luckily, these excavations revealed that the survey was indeed a fair reflection of what was in the soil and managed to date most of the phases of development of the site.



So, what has been found there? The initial report notes :

“Two square enclosures were located and are dated to the early Iron Age on the basis of pottery. They were defined by substantial ditches and contained a small number of features. Contemporary settlements in this region tend to be open in nature and these are therefore significant discoveries.

The Romano-British settlement was located within the northern part of the development area and extended over c. 4ha. It comprised a rectilinear ditched enclosure with fairly regular internal sub-divisions, an integral track way and further activity to the south-east. Some evidence suggests that the track way originated in the early Iron Age, and along with one of the square enclosures, was still in use in when the Romano-British settlement was established. Pottery suggests that it was occupied between the late 1st and 4th centuries AD. The presence of Saxon spindle whorls hints at continuity into this period. The settlement was subdivided by a series of ditches, several of which had been redug, indicating continuity in layout over time. A number of possible buildings were identified, the most convincing of these was a roundhouse. A number of cobbled surfaces probably functioned as yards within the settlement”(1)

In June and early July 2012 Albion Archaeology were again commissioned to complete a full scale excavation of the southern part of the site near to Jubilee Avenue. Here the archaeologists found the southern part of the trackway and also a square enclosure dating from the Iron Age which continued to be a feature in the Roman landscape. This enclosure is interesting for although small in size it has a rather ostentatious bank and ditch arrangement surrounding it. In fact due to the size of the bank and ditch there is hardly room for internal buildings. Someone was obviously trying to impress!

As to the future of the site, Miller Homes has ensured the settlement is preserved for future generations. The site will be buried under the new football pitches deep enough so that no disturbance can be made to the archaeology.

I would like to thank Simon Mortimer of CgMs Consulting Ltd and Iain Leslie of Albion Archaeology for showing me around the site.

**Eric Wheeler**

*Chairman, Sileby Heritage Group*

*Archaeological and Heritage Warden, Sileby*

Email : Silebyhistory@aol.com

(1) "Land off Seagrave Road, Sileby, Leicestershire : Archaeological Field Evaluation", Project SL1871, Albion Archaeology 2011.

The trackway runs from bottom to top (between the two parallel lines which are ditches) and the square enclosure is to the left (the orange fencing surrounds excavated parts of the large ditch and bank)







The best  
solution

The best service

Female hair loss / thinning .  
Don't Suffer in silence  
Sympathetic confidential BUT most  
of all practical and honest help and  
advice

Call 01509 813871

# BOYS II MEN

**TOP QUALITY EXPERIENCED  
HAIRSTYLISTS**

**Friendly Atmosphere and all cuts at  
Reasonable Prices**

12b High Street, Sileby  
LE12 7RX  
☎(01509) 812357

## Sileby Pet Supplies

71 King Street, Sileby, Leicestershire

**Tel: 01509 812908**

Large selection of pet food, treats and  
accessories

Fishing Bait and Tackle

Agents for Burns dog and cat food



*FREE Local  
delivery on  
orders over £5*



# Your Letters

Send you letters to the editor. Please include your name and address (not for publication if you wish).

As a Sileby resident I was surprised and pleased to hear that the Gala was to make a comeback. I have fond memories from my childhood of great fun seeing the floats, people dressed up, stalls and rides.

With just a small committee, started by Councillor Roy Brown then headed by Councillor Ken Jones (with little help from the parish council) I feel the day, despite the weather was a great community spirited day.

And I only hope that this day will be repeated for many years to come,  
**WELL DONE TO ALL!**

From a grateful Sileby Resident.  
*Name & address supplied*

Ron Underwood

Mary Underwood, formally of Sileby, now of Skegness would like to thank the many Sileby people who sent kind words and sympathy on the sad loss of husband Ronald who died on 14th April 2012 after a short illness.

'Ron' as he was known to many was a

greengrocer and florist trading in Swan St Sileby from 1958 until 1974, having taken over the business from his wife Mary's mum Elsie Evans who started the business with her husband Sydney before the Second World War. The shop was originally known as the 'Futurist Store' due to the fact it was directly opposite the then Futurist cinema. The shop is now a private house, no 75 and the cinema went on to become the chemists shop. In the late 60s Ron expanded the business into the larger shop next door which is now trading as the Post Office. Many children growing up in Sileby in the 50s, 60s and early 70s will remember playing on the 'recky' (recreational park) and nipping along the ally to fetch a bagfull of sweets or a lollipop from Ron's shop.

Ronald moved to Skegness in 1986 to become a hotelier, running the Savoy Hotel on the seafront before retiring in 1997. The hotel continues to be run by the Underwood family.

Paul Underwood

# SILEBY PHOTOGRAPHIC SOCIETY

Another season has now passed and the British summer will give members the opportunity to get out and take pictures. After a series of walks on Monday evenings during July and August the new programme of meetings will commence in the Primary Room and the Community Centre on Monday September 3rd.

Sept 3	Royal Photographic Society Nature Slides	
Sept 10	Images, Images, everywhere	lecture by Anthony Pioli FRPS FBPE
Sept 17	Panel Competition	judged by Malcolm Cook FIAP
Sept 24	Members' Short Displays	
Oct 1	Location, Location, Location	lecture by Tony Winfield
Oct 8	12-Shot Challenge	judged by Stuart Hewins DPAGB
Oct 15	The Pyrenees – A Land of Cascade	lecture by Stuart Bramwell
Oct 22-27	Annual Exhibition	judged by Ian Pinn
Oct 29	MCPF Portfolio	
Nov 12	Under a Tuscan Sky	lecture by Ashley Franklin ARPS APAGB
Nov 19	Quarterly Competition – 4th round	judged by Peter Cheetham DPAGB
Nov 26	Perth to Darwin	lecture by Gianpiero Ferrari
Dec 3	This is Africa	lecture by Brian Matthews
Dec 10	An evening with .....	David Putt
Dec 17	Picture and Pies	

Visitors are always welcome at the weekly meeting for a nominal charge. The annual exhibition in October is the highlight of the season and gives the members an opportunity to display their work to a wider audience. We look forward to seeing you there.

## Cossington Gate Railway Station

Cossington had a small railway station for about 11 years before it was closed in September 1871. It is believed that a photograph of this is in existence – but where? Eric Wheeler believes that he saw a photograph some years ago but cannot remember the location. If you have a picture or know of the whereabouts of a picture that could be copied please get in touch with Lionel Blower on 01509 816287 or e-mail – [ltbrib@btinternet.com](mailto:ltbrib@btinternet.com)

# **SILEBY PARISH COUNCIL**

At the annual Parish Council meeting held on 17 May Councillor Mrs Fiona Hughes was appointed Chairman. Affectionately known as 'Flo', Fiona has lived in the village for the past 25 years and has been a Councillor for the past 8 years.

We would like to remind you that we hold two meetings each month on the first and third Thursday. The first Thursday comprises the four committee meetings ie parks, community centre, planning and general purpose. The third Thursday is the full council meeting. Please feel free to attend any of the meetings, you will be most welcome.

## **Result of Scarecrow Competition**

The standard this year again was very high and we would like to say a big thank you to all of you who took part, taking the time and making the effort. Thank you also to those companies who sponsored the competition, your contributions are very much appreciated. The winners are as follows:-

### **U16s**

1 <sup>st</sup>	Kirsty & Jack Millward, & Ruby Edwards
2 <sup>nd</sup>	Peter Pan Playgroup
Joint 3 <sup>rd</sup>	Little Stars Playgroup & Olivia Belshaw

### **Adults**

1 <sup>st</sup>	Mandy Belshaw
2 <sup>nd</sup>	The Astill Family
3 <sup>rd</sup>	The Cragg Family

Congratulations!!

**Sileby Parish Council**

## **Sileby Skate Park Extension**

Come and see our project developments and vote for your favourite design on our board located in the community centre.



Anyone who would like to support or volunteer their time to the project between now and september please contact Rosemary, Sileby Parish Council Clerk: 01509 813075.

# Closing The Loop

"When will the work be done?"

"Nobody told me when the work was done."

"Was the work ever done?"

The County Council is working to improve how it keeps members of the public informed about progress on highways issues reported via the Customer Service Centre.

At the moment, when a call is made service centre staff take details, and a unique reference number is given. County Council officers are then assigned to assess and respond to the incident or enquiry. Officers update the system as they work.

Enquiries can be followed up via the Customer Service Centre by telephone on 0116 305 0001 or by email to [customerservices@leics.gov.uk](mailto:customerservices@leics.gov.uk), quoting the reference number previously given. The centre is open from 8.00 a.m until 6.00 p.m., Monday to Friday.

An improvement which the County Council is working on is to make some alterations to current systems that might enable enquirers to receive automatic updates, via email, on the progress of issues raised. This is at an early stage of development; the estimated "live" date is the beginning of August. Initially, the new arrangement will be available as a pilot scheme for issues concerning street lighting, roads and footways. If the pilot scheme is successful it will be extended.

In the meantime, please let me know of any difficulties you may experience in reporting matters to the Customer Services Centre or finding out about the progress or completion of work.

Richard Shepherd, County Councillor

tel: 01509 413903, email: [richard.shepherd@leics.gov.uk](mailto:richard.shepherd@leics.gov.uk)

[www.leics.gov.uk/shepherd](http://www.leics.gov.uk/shepherd)



**YASMIN'S**  
CONTEMPORARY

**Tandoori & Balti**  
**Restaurant**



**Authentic Bengladeshi**  
**Cuisine Natural Ingredients**  
**Cooked Fresh to Order**

**Take Away - Free Delivery**

On all orders over £10.00 3 miles radius  
10% Discount on all orders over £10.00 collected  
Cheques accepted with bankers card only,  
Credit cards welcome

## Opening Hours

Sunday to Thursday—5.30pm to 11.30pm

Fridays & Saturdays—5.30pm to Midnight

**\* Buffet night every Monday (except bank holidays) \***

**Wednesday 2 for 1 on main course**

**37 High Street, Sileby. LE12 7RX**

**Tel: 01509 815050 [www.yasmins-tandori.co.uk](http://www.yasmins-tandori.co.uk)**



**Growing up in Sileby in the 1950s** –Thanks to all the folk who have contacted us, We have had a wonderful response to our request for items for this feature and look forward to receiving more Memories.

Charlotte Stephenson (nee Middleton) has sent hers .....

“The freedom of growing up in the 50s was magical; street games such as skipping and rhymes that were said, snobs, whip-and-top, marbles, ‘scissors’ and ball games. Chalking a hopscotch on the pavement with a stone -nobody minded. Out all day with friends in the fields up Mucky Lane (now Highgate Road estate).

Playing in the brook before it was cleaned up, catching tiddlers and frogs’ spawn. Falling in! Gathering watercress from Wellbrook Spring.

The well-attended Sunday School. New outfits for the Sunday School Anniversary, when the church would be packed with mums and dad to hear the children sing, accompanied by Freddie Goss playing the organ. The Sunday School outings when two packed steam-trains carried the children and families to Mablethorpe for the day, which ended with tea at the Kit Kat restaurant.

Hill’s Grocers at the top of High Street – sugar was in blue paper bags. In the fifties some things were still rationed. I can remember going with my mum to get a new ration book and using coupons to buy sweets. Billy Porter’s bakehouse was in Manor Terrace.

The infant school on Barrow Road. Sileby County Senior School on King Street; Mr Harrington was the headmaster – he had a cane, but only for the boys. Girls were slapped on the legs or hands. Boys and girls had separate playgrounds. When it snowed we made slides – shiny as glass – where we played “Keep the Kettle Boiling” taking turns to slide down as fast as we could. No Health & Safety then! Boys wore shorts, even in winter, ’till they moved on to secondary education. Sports Day was held in the evening, on the recreation ground. In 1951 there was a Punch and Judy show. There were Whit Parades through the streets with floats and bunting.

It rained on Coronation Day – we had a fancy dress party in the Methodist Chapel Hall on the corner of Swan Street/ King Street. I still have my Coronation mug. The village institute was between Cossington Road and Manor Terrace – venue for the Scouts’ annual Gang Show – hilarious. Shows by the Peggy Williams Dance Group. This was also the “welfare” (clinic) where babies were weighed and orange juice distributed.

Dr Butler’s surgery was on Mucky Lane - Dr Grey had his practice on Cossington Road; his daughter Peggy Heath had her dental surgery on the same road. I remember Nurse



Barnes, the midwife, on her bike. She was also the Nit Nurse!

Some houses still had the old 'pan lavatories', and I remember the council lorry doing the rounds to empty them. I'd better not say what we kids would shout as we followed it, holding our noses!



Chuck Preston's café on the Banks (opposite the hairdressers on the corner of Duck Paddle), you could get an ice cream in summer but it was mainly used by the older men as a meeting place. Opposite was the cobblers – it smelt wonderful - now demolished. Albert Busby cleaned windows and was the chimney sweep. His wife had a drapers shop at the bottom of High Street. Geoff Baum ran the "Futurist" cinema

was on Swan Street – we called it "Bert's Bug House". (Bert Baum ran the cinema before his son Geoff)

My father, Bert Middleton, had a butchers shop on Ratcliffe Road – it had been Carvills fish and chip shop – I think it is Lewins now. My grandfather's butchers shop is now Lanza, he lived there as well, we lived next door at 53 The Banks. That's him, in the doorway. Things were a bit different then – today's food inspectors would have had a field day!

Sileby was much smaller then and there was a real sense of community. You definitely could leave your doors unlocked – we had a village bobby.



However, one day my granddad was talking to the village bobby when the policeman was shot, he died from his injuries!!"

Bert Middleton's butchers shop on Ratcliffe Road. Now

# SILEBY FACES - PRE 1960 is on the WEB:

[www.leicestershirevillages.com/sileby/faces-from-the-past.html](http://www.leicestershirevillages.com/sileby/faces-from-the-past.html)

Hundreds of photos, thousands of faces: schools, sports, uniforms, parties, dances, outings etc.

An index to the names is part complete and will be available on the website so it should be easy to find relatives, friends, ancestors and yourself!

Please show to older friends and family.

From a very early age I have been interested in faces starting with stamps and coins (remember the faces on the old Victorian pennies?) and later on medals. When my mam and my wife Jane's dad passed on we inherited two cases of photos covering a period from 1905 to the 1990's - many of which we may never recognise.

Then I fell in with Pete Campbell and Eric Wheeler – Sileby Heritage Wardens who supplied me with dozens of photos – thanks a lot lads.

I made up folders of 8-10 photos and forced them onto folks round the village - 99% of the names came from them! They have supplied me with more photos and newspaper cuttings with names on.

If you can help fill in missing names, spot any mistakes or have further photos (especially World War and pre-1970 weddings) there is an email contact and a form for multiple changes on the web.

Study the numbering system carefully as I could only get 10 names on one line – I've had to move some from one row to another. Circles on photos have a small line pointing to the face. Had a bit of trouble with single and married women - if you know status, please mark (N) for single or (M) for married e.g. Jane (M) Rose (N) Arnold.

## **People whom without their help nothing would have happened:**

Photographers of the past (with great admiration for all their endeavours)

Lionel & Rosemary Blower (N) Briggs

John & Jean Lee (N) Hunt

Pete & Jan Campbell

Mr Alex Lovett

Keith & Pauline Carvill (N) Freestone

Mrs Pearl Marchant (N) Draper

Tony & Georgina Doore (N) Toone

Mick & Joyce Atkins (N) Dexter

John & Dorothy Ferrin (N) Staples

Mrs Glenda Ward (N) Poole

Tony & Elva Green (N) Newby

Tony & Sylvia Wells (N) Ward

Norman & Jocelyn Harris (N) Betts

Mr Eric Wheeler

Mrs Betty Holmes (N) Harriman

Mr & Mrs John Whittington

Alan & Christine Hunt (N) Hetterley

Mr Brian Yates

Not to mention my family, Jane on the writing, Dan on the web, Julie on the photo editing and copying, Joe for the transport and Sam, Ed and Lucy for the three scanners and all the ink and paper. Thanks for putting up with the mess and chaos.

Geoff Rose, Sileby Lad

# HAVE YOUR SILEBY ANCESTORS MADE THE 1891 TOP 20 ?

## SILEBY CENSUS 1891 TOP 20

SURNAME	Numbers in Census	SURNAME	Numbers in Census
1 Smith	114	11 Martin	43
2 Betts	74	12 Burton	33
3 Dakin	72	13 Hetterley	32
4 Porter	65	14 Allen	31
5 Ward	64	15 Bailey	30
6 Preston	55	16 Widdowson	30
7 Yates	53	17 Gamble	27
8 Taylor	50	18 Oswin	27
9 Sharpe	46	19 Breward	25
10 Whittington	45	20 Lacey	23

Researching the ancestors of my mothers family, a Sileby Dakin of many generations I brought up on the internet and printed out the Sileby Census of 1891 – all 112 pages of it. Whilst finding my grandfather Jim Dakin (Swan Street) & his future wife Edith Holland (Cossington Road) it struck me what large numbers of Sileby residents lived per house in the old terraced homes of Swan Street, King Street, The Banks & others. Often 10 to 12 a house covering 3 generations. This seemed to particularly apply to the Sileby families of many generations – Porters, Dakins, Betts & Sharpes, in contrast to Barrow Road whose residents were not so overcrowded and much fewer born in Sileby.

I wondered how my family the Dakins ranked in numbers compared to other names in this Census. So on a miserable April weekend I started inputting the Census on Excel by alphabetical Surname order by numbers per household. It was in seven sections by Road/ Street etc. I doubt if I would have started it if I realised how long it would take so I did a “Magnusson” – *I’ve started so I’ll finish* - I counted numbers in each of the seven sections before I input & reconciled them on completion. My reconciled census count totalled 2,375 whilst the published Census said 2,308. On completion I saved to another tab & did a sort by number. An extract of this above shows the Sileby 1891 Census top twenty names by number.

Smith unsurprisingly came top with 114 – 55 of them living on Barrow Road – but Betts surprised me, second on 74 knocking the Dakins down to third place on 72. I cannot remember Betts’ in any great numbers and the answer may be a sad one in that there are 5 Betts’ named on the 1914-18 War Memorial on the Park.

I have the full Census analysis available and anyone wishing for an electronic copy can contact the Editor Dave Palmer whose contact details are on Page 4, who will put you in touch with me & I will send you a copy.

Phil Gilbert

The weather had been dull for several days and I was visiting my neighbours when the sun peeped out from behind the clouds. Jeannie told me that she would be giving a recitation to the Ladies Circle later in the day – a poem taught her by her Scots grandmother. I asked her to tell me about it and with her wonderful Scottish accent she recited .....

*Give me the morning sunrise -  
Give me a touch of dew -  
Give me another beginning -  
A day all bright and new  
When yesterdays cares and troubles  
Shall vanish and fade away.  
Joy comes with each bright new morning -  
Strength follows for all the day.*

It was a magic moment. Jeannie had lifted my spirits and as I walked home the daffodils glowed and the sun shone.

### **Garden Gnomes Gardening Group**

Sileby Garden Gnomes will begin their new programme on Wednesday 12th September with a talk and slide show on "Year in the life of a garden".

The Group meet in the Methodist Church Rooms in King Street on the second Tuesday of the month at 7.30pm. Membership is £18 for the year or £3 a visit. So come along to this friendly group and share ideas with like minded people. For further information see the Sileby Village website or telephone 812993.

The programme for September - December 2012 is as follows -:

Wednesday 12th September "A Year in the life of a Garden"

Wednesday 10th October "Winter Hanging Baskets"

Wednesday 14th November "Cossington Meadows" talk from the Wildlife Trust

Wednesday 12th December Christmas Party

## **Don't Muck Around Awards**

It all began in 2005 when Dave Thompson, and his wife, decided to tidy up the area on Heathcote Drive near to Sileby Brook. On one side there were many wild raspberries encroaching onto the pathway. They sent many letters and made a number of phone calls to the Parish, Borough and County Councils, Severn Trent, the Environmental Department and Jelson Homes to try to find out who owned the land. After drawing a blank in all departments, Andy Reed came to their aid and discovered that the land was owned by Jelson Homes. So Dave and a few volunteers from the area set to to clear the area. 28 bags of rubbish plus a mattress were collected. Dave and his wife continued to mow these three areas and collect rubbish but eventually Jelson Homes decided to mow these spaces. Now Dave continues to do a "litter pick" four or five times a year. Bluebells have already been planted in the grass and may be daffodils later this year. Dave was presented with an Achievement Award at the Awards evening, run by Charnwood and Serco.

Also presented with two awards from Sileby were Complete Wasters from the Green Place, who won the business section and were also overall winners of the evening. Complete Wasters re-cycle computers and go all over the country to festivals collecting rubbish to re-cycle. If you haven't stopped by the Green Place please pay them a visit. The gardens are lovely and peaceful in the middle of the Village.

\* The attached photos show before and after pictures of the area cleared on Heathcote Drive.





## Renewable energy - should I bother?

Renewable energy is now a fast moving technology; Government wants all householders to be involved in the generation of carbon free energy. Solar panels (PV) have led the way with great success, so successful it has caused the cost of equipment to fall by 40% in 12 months. On March 3rd the Government reduced the subsidy to protect the public purse and to encourage installers to offer very keen prices. So, can businesses and homeowners expect a good return if they invested before the next round of subsidy cuts on July 1st?

David Hill, MD of local installer Carbon Legacy summarises for us: “Businesses and homeowners can expect to see 10-15% returns on PV investment and even greater returns on commercial systems. The market has shifted considerably. In 2010 prices for a 4kW system were about £15,000 and in 2012 these prices have dropped to about £8,000. Planning rules have also been relaxed for commercial roof mounted installations just as domestic properties have had for the last few years. This gives businesses and farmers an excellent opportunity to get in before what is seen as the last big reduction in the Feed-in-Tariff (FIT) this July. Panels on roofs are now a common sight, yet not every eligible building has been fitted with panels I do encourage residents and businesses with a near south facing roof to seek advice from a reputable company.”

Whilst homes seemed to have welcomed the new technology businesses in particular seem to be slow in taking it up. There are often good reasons preventing businesses from getting involved, but the use of ‘free’ energy and Government FIT subsidy is welcome support to offices, farms and factories at a time of rising electricity costs and diminishing margins.

Being pragmatic, any home or business wanting to install any renewable energy technology needs to understand the benefits of doing it. PV is relatively easy to understand; a benign, unobtrusive technology with a good subsidy attached to a long term 25 year Government contract. Other technologies have less understandable benefits and consequently are less attractive at first sight. There are also changes in the way we heat our homes and businesses, The Government has introduced the Renewable Heat Premium Payment (RHPP) as a one-off payment to encourage uptake. This is a single payment made after the installation of solar hot water, heat pumps or biomass boilers.

For commercial users there is the 20 year index linked RHI (Renewable Heat Incentive) which is providing businesses with astounding returns of up to 25%, 50% annual fuel savings and very short pay back periods. This is particularly true when oil, LPG or electricity is the existing heat source and the boiler is getting old and inefficient.

With the banks now offering good value loans at 6-7% for renewable energy installations and the RHI payments covering the loan repayments, the excuse of a “tight cash flow” stopping investment has gone.

With luck the domestic Renewable Heat Incentive will start next summer so the outlook for ‘off-gas’ properties looks very good indeed. Particularly if they have space for a photovoltaic array to supplement their electricity supply. There is no reason why if using two types of renewable energy technologies and a comprehensive insulation upgrade a home spending £2,000 on oil each year cannot see their bills reduced to zero.

Homes are not alone in being able to reduce their bills; there are many small businesses in the Borough that can reap the benefit of green technologies from garages to creameries to children’s nurseries.

The time has come for residents and businesses to start asking for renewable energy. We saw a rush of applications prior to the closing of the first feed-in-tariff with many disappointed clients. There are about 9 weeks until the next one closes – don’t be left out in the rush!

For further information please contact our Green Energy Advisor on 01664 822499.



# CarbonLegacy

*Harnessing nature's energy*

## INVEST IN YOUR FUTURE



**UP TO 17% RETURN ON INVESTMENT**

**INSTALL BEFORE 1<sup>ST</sup> AUGUST  
TO BEAT THE PLANNED TARIFF CUTS**

**PAYMENTS GUARANTEED FOR 25 YEARS (INDEX LINKED)**



**DAVID HILL**  
MANAGING  
DIRECTOR



## BIOMASS

UP TO **60%** CHEAPER THAN OIL.

GOVERNMENT PREMIUM GRANT OF **£950**  
AVAILABLE NOW!

DOMESTIC RHI (RENEWABLE HEAT INCENTIVE)  
DUE IN SUMMER 2013

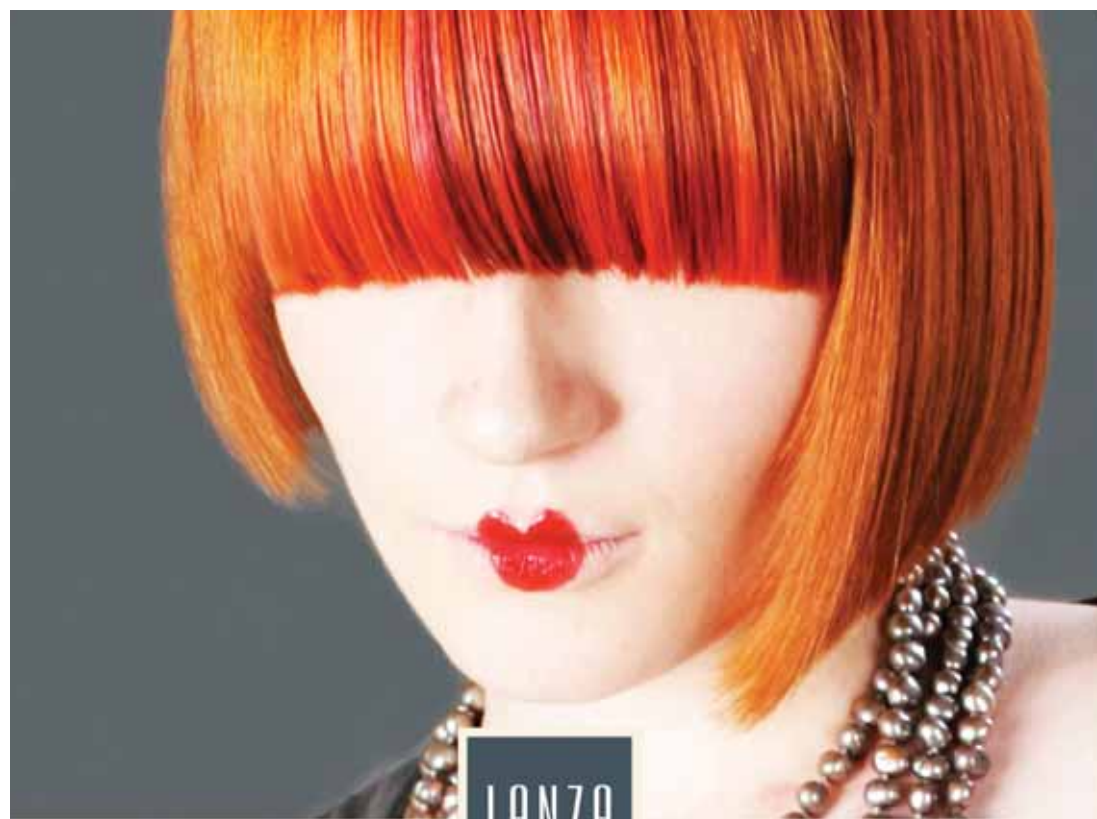
**Tel: 0800 644 1712 or 01664 822 499** [www.carbonlegacy.co.uk](http://www.carbonlegacy.co.uk)



### Showroom and Advice Centre:

The Service Station, Melton Road, Hickling Pastures, Melton Mowbray, Nottinghamshire, LE14 3QG





LANZA

50% OFF

YOUR FIRST CUT & FINISH AT LANZA

Book now by calling **01509 812 968** and quote "*Talk@Sileby*"  
then simply present this advert at your appointment.

[www.lanzahair.co.uk](http://www.lanzahair.co.uk) Join us on  LanzaHairDesign

Lanza Hair Design | 57 The Banks | Sileby | Leicestershire | LE12 7RD  
For appointments call **01509 812 968**

\*Appointments subject to availability with selected stylists. Not to be used in conjunction with any other offer. Offer only for new clients of Lanza Hair Design on their first visit. Reference must be quoted on booking and advert presented at appointment.