

Talk@Sileby

Village newsletter



33

Autumn/Winter 2012
www.sileby-village.co.uk



SUNRISE *eggs*

Sponsors of Sileby Town Cricket Club

Sunrise Poultry Farms Ltd.
Seagrave Road, Sileby,
Leicestershire LE12 7NJ
Tel: 01509 812441
Fax: 01509 814601
email: info@sunrise-eggs.com
web: www.sunrise-eggs.com



Central Business Services

Oak Business Centre, 79-93 Ratcliffe Road, Sileby, Loughborough LE12 7PU

Tel: 01509 816150 Fax 01509 416852

www.centralbusiness.co.uk

Business Advisers, Accountants - and much more

**No nonsense, affordable, business advice, accountancy and
bookkeeping - on your doorstep.**

A fully comprehensive service for the Self-Employed, Partnerships, Ltd Companies, covering all aspects of accountancy - including Year End Accounts, PAYE, CIS, Company Formation etc



Our friendly, approachable, team offers a personalised service, suited to your individual needs - **whatever the size of your business**

FREE INITIAL CONSULTATION - www.centralbusiness.co.uk or call us on 01509 816150

Our FREE newsletter containing lots of interesting and informative information can be obtained from our website

Foreword

WELCOME TO THE winter 2012 edition. 2012 has seen Talk@Sileby go from strength to strength, the advertisers are providing enough income for us to continue publishing the 3 editions a year, all of them are local businesses so please support them where you can. The delivery team are also continuing to provide a great service by pushing our work through your doors and for this we thank them all.

The editorial committee is pleased to have been strengthened with the addition of Mathew Hobson who brings with him skills in magazine design, we hope you like the results that are evident in this edition. If you have any feed back from this, or anything else in the magazine then we would love to hear from you.

Christmas is nearly upon us once again and the village illuminations will be switch on on Friday 7th December outside the community centre, if you have never been before then why not make this year the first of many. There will be children's activities and many stalls in the centre, the local schools choirs will be there as part of the entertainment.

Christmas is a time of celebration and all our local churches have special Christmas services, these are detailed in the centre pages and each church group will be happy to welcome visitors to these services at this special time.

From all of the editorial team we wish you a merry Christmas and a Happy New Year.



Talk@Sileby, **by Sileby people. For Sileby people.**

Copies of Talk@Sileby

Copies can be obtained by post at a cost of 50p per issue which includes P&P.

Please make cheques payable to: Sileby Village Newsletter.

Back issues of talk@Sileby can be viewed on the internet at www.sileby-village.co.uk

Contacts

Editor: Dave Palmer, 60 Heathcote Drive, Sileby 01509 816610
d.r.palmer@talk21.com

Advertising: Lionel Blower 01509 816287
ltbrib@btinternet.com

Printed by: Norwood Press, Ellistown 01503 262020

If you would like to give your feedback, articles or letters these can be sent to the Editor or you can now use the internet forum at www.sileby-village.co.uk

The advertising rates for Talk@Sileby are listed below

Quarter Page £30

Half Page £50

Full Page £80

Inside front/inside back cover £105.00

Back cover £135.00

These prices are per issue. 10% discount for booking and paying for three insertions in advance.

Disclaimer: The views expressed in this magazine are the views of the contributors and not necessarily the views of the talk@Sileby.

Talk Sileby

Magazine Co-Ordinator: Ken Jones

Editor: Dave Palmer

Secretary: Pat Haswell

Treasurer: Lionel Blower

Societies Co-ordinator: Lionel Blower

Auditor: Richard Kinton

Design/Layout: Mathew Hobson

Your community magazine is delivered to every home and business in Sileby; that's about 3,500 addresses!

It is published three times a year: in November just prior to the Christmas lights "switch on", in Spring around about Easter and in the summer.

We have no political, commercial or religious allegiance and aim to be impartial and independent. We are entirely self funding through advertising revenue.

We are here solely to promote Sileby, its businesses, residents, clubs, societies, associations, schools and churches.

Sileby Parish Council

SILEBY PARISH COUNCIL is pleased to welcome two new members to the Parish Council: –
Miss Sandra Pickett and Mr Paul Murphy.

Annual switch on of *Christmas* lights 7 December 2012

The Annual Switch-On of the Christmas lights will take place on **Friday, 7th December 2012**. As in previous years the entertainment and the switch on ceremony will be performed in front of Sileby Community Centre, on the High Street.

A short carol service will commence at **6.00pm** after which the lights will be switched on. There will be carol singing from children at Redlands School and Highgate School, and the fairground rides will be there, as usual, on Back Lane.

We are changing the theme this year from a “Victorian Market” to “A Winter Wonderland” which will be held in the Sports Hall and will open following the lighting ceremony. Coffee and mince pies will be served in the Community Centre.

Please come and join us, we look forward to seeing you there! ❄️

Rosemary Richardson

Clerk to Sileby Parish Council

Tel: 01509 813075 Email: clerk@silebyparishcouncil.org.uk



Cover photo: Lionel Blower—Sileby Photographic Society

Sileby High Street in the Winter of 2010. Snow brought disruption to travel in the village and surrounding areas for the last 2 winters. I wonder what the weather has in store for us this time?

The last generation before TV trapped us

Sileby in the 1950s was a very different place, Geoff Rose tells his memories of being a young village lad when TV was a rarity, health and safety was loose at best and you did as Mam told you.

GEOFFREY MICHAEL ROSE was born 6th May 1940, an only child to parents Edwin and Connie Rose.

“In those days daughters went home to Mam to have their babies,” Geoff explains. “I was born in Gran’s middle bedroom at 25 Danvers Road, Mountsorrel, and would be labelled a “foreigner”. It even applied to visiting distant parts of the village then.”

Geoff grew up in number 8 Hobbswick, over a little concrete bridge where he spent time as a young boy helping his Mam with the Hurdy Gurdy machine.

“Mam loved to sing songs such as Red Sails in the Sunset and others by Gracie Fields and Bing Crosby,” he says.

Weekly trips to the Grandparent’s house were made across the fields or by catching the Howletts bus on a Sunday night. Geoff would often help his Grandpa to mend shoes in the garden shed for friends and family members or he would be gathering food and dahlias at the allotments.

“Grandpa had a big wooden chair, I daren’t sit on it. He had a wireless with only one knob that went up, down, left and right and turned for different functions,” Geoff recalls.

Every woman more than ten years older than yourself was called Auntie—related or not. One

of his favourite places was Auntie Mable’s on the Banks. A meeting house with seats all around for people to drop in as they pleased.

“Everybody was welcome,” he remembers. “I often listened to them chopsin and putting the world to right.”

The trolley gang—a group of kids who played on Albion road with small pram wheels, planks of wood and a rope for steering their make-shift racers. The trick, says Geoff, was to start as high as you dared on the hill, turn the corner and coast towards the brook or shoot straight across The Fountain pub yard.

“Traffic?” Geoff asks. “What was that?”

The other games Geoff played as a young boy are mostly still around but many have been set aside in the wake of PS3s, Xboxes and Wiis.

Marbles, chess, dominoes, conkers, whip and top, draughts and the king of games—Monopoly!

Geoff also used to go carol singing, he would go down entries to people’s back doors, in those days folks lived in the back room. They made enough money to sit in Hubbles for fish’n’chips. The chips tasted a bit soapy according to Geoff, but it had tables and chairs so you could eat posh.

“Once after singing outside a back door up Swan Street the door slung open and a man stood pointing a rifle at us!” says Geoff. “He leaned



back into his brothers arms and fired into the air.”

Holidays. For twelve years on the trot Geoff remembers his family’s trip to Skeggy. They would catch the bus or the train and stay in the same digs each time.

When he turned fifteen his Mam and Dad decided to take Geoff to Blackpool for a week’s holiday. It was a change of pace to his usual seaside destination.

“I stood gob smacked at the side of road watching four lanes of buses all going the same way,” Geoff remembers. “It was the first time a little Sileby boy realised how big the world is!”

Blackpool fair was a highlight for Geoff—the Grand National, Big Dipper and the Funhouse full of slides, a revolving barrel and moving stairs. They also visited the tower, the circus, and the three piers and went rowing in Stanley Park.

“Thanks Mam and Dad for the perfect end of 15 years of irresponsibility. Unfortunately, this is when my first pinball went through the flippers—I had to get my nose to the grindstone, literally, my first job was grinding at Kenny Grabs,” says Geoff.

“Work seriously endangers your time!” ☒

Sileby Pet Supplies

71 King Street, Sileby, Leicestershire

Tel: 01509 812908

Large selection of pet food, treats and accessories

Fishing Bait and Tackle

Agents for Burns dog and cat food



*FREE Local
delivery on
orders over £5*

SMARTLY STITCH

TAILORS

CLOTHING ALTERATIONS & REPAIRS

Professional Alterations and Repair Work

Trousers, Jackets, Coats, Skirts, Dresses and Many Other
Garments, New Zips Fitted

Made to Measure Curtains

Alterations also undertaken

Leather Garments Bags Repaired

Altered and Repaired

And zips fitted

PROFESSIONAL

DRY CLEANING AGENTS

**Motorbike, Equestrian & Leather Clothing
Repaired and altered**

SMARTLY STITCH

TAILORS

1a Little Church Lane (Next to St Mary's Church)

High Street, Sileby LE12 7NE

www.smartlystitch.co.uk

TEL: 01509 815658



1st Sileby Brownies jubilee garden at Sileby library

ON A GREY May evening, as part of their Service to the Community, 1st Sileby Brownies went down to Sileby library to brighten up the outside of the building for the Royal Jubilee. The Brownies had an enjoyable evening digging in their donated bedding plants. As anyone who has passed by will have noticed, they have created an amazing display of colour ever since. Many of the library customers have remarked to the staff how lovely they have been.

Thanks are to be given to the Brownie parent who prepared the flower bed for us, to the Library Service for letting us plant the flowers and to all the parents for their support.

Sileby District Rainbows, Brownies and Guides are flourishing in the village but are always looking for more adult help. If you have time to spare, details can be left for me at the library.

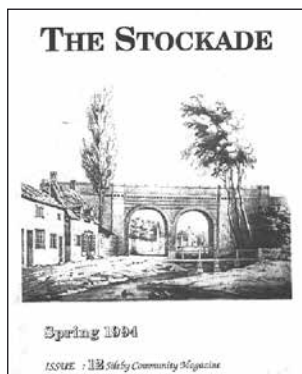
Pam Parker aka Tawny Owl

Sileby Centenarians

Mr and Mrs Yates kindly lent me their copy of “The Stockade” published in the spring of 1994; Horace Yates had just celebrated his 100th birthday, and written an article telling about his life in Sileby, and the many changes he had witnessed. There was also a letter from Jimmy Wallace—his mother Hilda Gibbs, who had been born in Mountsorrel but lived in Sileby; Hilda had celebrated her 100th birthday in January of the same year.

How many Sileby Centenarians are there today, either still living in the village or elsewhere?

Coincidentally, the cover featured the railway bridge—interesting to compare it with the photograph used on the cover of the spring issue of this magazine!



Oh, Whistle

HAVING JUST RETURNED spell-bound by a performance of *Midsummer Night's Dream* that Barrow was lucky enough to win from Centre Stage, we are now eagerly awaiting our next Centre Stage offering. M R James is acknowledged as the master of the English Ghost Story. He first performed his supernatural tales to friends at Christmas in King's College, Cambridge. Now the Nunkie Theatre Company has brought two of these unforgettable spine-chillers back to life in a show entitled *Oh Whistle...*

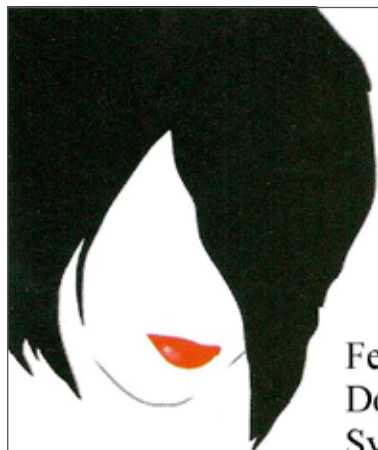
Oh Whistle... will be on **Sun 25th November** in Humphrey Perkins Community Centre, Cotes Road, Barrow LE12 8JU starting at **7.00pm**. Tickets are £8 and £7 (concessions) but if you buy them in advance you get a £1 discount. You can buy them from The Paper Shop, High St, Barrow or email Judith on judithrodgers155@gmail.com or phone the box office on 07718 153117.

Oh, Whistle, And I'll Come to You, My Lad—a tale of nocturnal horror on the Suffolk coast—is considered by many to be James' masterpiece. It is beautifully complemented here by *The Ash Tree*, a story of witchcraft and vengeance down the generations.

Reviewing this performance *The Times* said "Lloyd Parry is a magical storyteller, well able to hold, amuse and frighten his audience. He catches the sense of dread that gives James his originality".

XXX





The best
solution

The best service

Female hair loss / thinning .
Don't Suffer in silence
Sympathetic confidential BUT most
of all practical and honest help and
advice

Call 01509 813871



YASMINS

CONTEMPORARY

Tandoori & Balti
Restaurant



Authentic Bengladeshi
Cuisine Natural Ingredients
Cooked Fresh to Order

Take Away - Free Delivery

On all orders over £10.00 3 miles radius
10% Discount on all orders over £10.00 collected
Cheques accepted with bankers card only,
Credit cards welcome

Opening Hours

Sunday to Thursday -5.30pm to 11.30pm

Fridays & Saturdays—5.30pm to Midnight

* Buffet night every Monday (except bank holidays) *
Wednesday 2 for 1 on main course

37 High Street, Sileby. LE12 7RX

Tel: 01509 815050 www.yasmins-tandori.co.uk



Syston model railway society


2013 Annual Exhibition

ON FEBRUARY 16th and 17th Syston Model Railway Society hold their annual exhibition at Sileby Community Centre. The event opens at **10:00am** and closes at **4:30pm**.

This year the exhibition is slightly larger due to changes at the Community Centre which mean more floor space is available. We have 14 exhibits and the usual specialist stalls. Although we have increased our admission prices for the first time in many years we feel that we are still giving value for money.

The star exhibit this year is Melton North, a scale representation of Melton North station and the area around Melton Mowbray. This model has taken many years to research and build and has already been highly acclaimed nationally. Other layouts include 6 "N" Gauge, 4 "00" Gauge, 2 "0" Gauge and 1 "09" narrow gauge exhibit.

Admission is £3.50 (including programme) for adults and £3 for unaccompanied children (under 14) and concessions.

For further info ring 0116 2609789 or 0116 2605760 or email systonmrs@hotmail.com or our web page www.systonmrs.org.uk 

Sileby garden gnomes gardening group

THE SILEBY GARDEN Gnomes Gardening Group are going from strength to strength with the new committee.

In July a new committee member opened her garden to over 80 visitors, and with the help of her grand-daughter served teas and scones. A profit of over £80 was raised for the Group's funds.

Even in August the Group enjoyed a lovely evening at the home of Kate and Mel in their Seagrave Road garden.


The meeting in September at the Methodist Chapel in King Street was visited by Linda Robinson who showed slides and talked about her lovely garden "Throughout the Year".

In October Helen Osborne from Radio Leicester came to demonstrate "Winter Hanging Baskets".

November is due for a visit from Chris Hill from the Wildlife Trust to talk about "Cossington Meadows".

In December the "Gnomes" are going all out to win the "Best Stall" at the Sileby Lights Switch On Winter Wonderland. So come along and see if they manage to wow the judges with their costumes and stall!!!

One of the most exciting items for 2013 will be in March when "Down to Earth" from Radio Leicester will be visiting Sileby. This will be a joint venture with Sileby Bowls and Tennis Clubs and will be held at the Bowls Pavilion. More details later in the Loughborough Echo and on posters around the village. So keep your eyes open!!

Everyone is welcome to come to the monthly meetings held on the second Wednesday in the month at **7:30pm** in the Methodist Chapel in King Street. The cost is only £3 per visit or £18 for a years membership. 

<p>GLENN LEWIN BUTCHERS SUPPLYING QUALITY LOCAL MEATS TO THE RETAIL & CATERING TRADE</p>  <p>1 RATCLIFFE ROAD, SILEBY LEICESTERSHIRE, LE12 7PU TELEPHONE 01509 812246</p>	<p><u>All our fresh meats are sourced from local farm assured farms within 10 miles</u></p> <p><u>No GM products are used in animal feeds</u></p> <p><u>All produce is slaughtered locally</u></p> <p><u>All produce is prepared by ourselves on our HACCAP approved shop premises</u></p> <p><u>Beef is hung for 28 days to obtain it's finest eating qualities</u></p> <p><u>Traceable from the farm to the plate</u></p> <p><u>Committed to customer satisfaction</u></p>
--	--



Inspirations Floristry

Come and visit our new shop on the High Street in Sileby.

We can create all styles of floral work for every occasion, from traditional and hand-tied bouquets and arrangements for birthdays, anniversaries, weddings, funerals and the more unusual floral creations to provide that additional wow factor. Delivery available.

www.inspirationsfloristry.co.uk * 01509 815505



A.G. & D. RICHARDS

OPTOMETRISTS

A. G. Richards, B.Sc., M.C. Optom. & D. Richards, B.Sc., M.C. Optom.

22 KING STREET, SILEBY, LEICESTER, LE12 7NA

Tel: (01509) 812088

EYE CARE for the WHOLE FAMILY

Glaucoma screening and advice on general eye care

Large range of frames from designer to budget

Full range of contact lenses – NHS patients welcome

Home visits available – Accessories and solutions

We take time to provide you with the right eye care

CHIROPODY • PODIATRY • FOOT HEALTHCARE

Modern foot clinic tailoring
foot health & cosmetic
solutions for the entire family.



Julie Astill: MSSCh.MBChA.HPC Registered

Tel: 01509 41 44 55

26 High Street, Barrow Upon Soar



Your letters

Dear Sir,

I am writing to inform the people of Sileby about yet ANOTHER proposed housing estate, again off Seagrave Road. This has been proposed by Hazeldon Homes (the same people who want to improve The Maltings). This proposal will see, if passed, ANOTHER 135 houses built on Green Fields. Sileby already has two building sites in the North of the village, going towards Seagrave (one off Seagrave Road and the other off Heathcote Drive on Stannage Road).

I was under the impression that Sileby IS NOT a priority village for more building. Why is all this building being allowed? How do we get any more building stopped?

Concerned Villager,
Mrs C. Thompson

HAVE YOU MADE YOUR WILL YET?

Or is your old Will out of date?

MAKE SURE YOUR ASSETS GO TO THOSE YOU LOVE.

For Wills - Trusts -
Estate Planning & Lasting Power of Attorney

We come to you! For an appointment or a brochure telephone

Mrs Chris Thomas, Mrs Pam Draycott or Wayne Cooper

01509 507334 (Home)

08450 568571 (Office)

In-Home Legal Services

90 The Meadows, Shepshed, LE12 9QN

Member of The Society of Will Writers

We have our own Company Lawyer and are part
Of the Skipton Group of Companies

Send your letters to the editor.

Dave Palmer, 60 Heathcote Drive, Sileby.

Or email to d.r.palmer@talk21.com.

Please include your name and address
(not for publication if you wish).

Church News

THE FRIENDS OF St. Mary's have had another busy year so far raising the funds to ensure that the Tower Repair Project remains in focus for an early 2013 completion. During the last 12 months we have organised the "Come Dine with Us" gourmet meal; two musical concerts, firstly with Highcliffe Harmony and later with Sorelle Di Canto; a Table Top Sale combined with a Coffee Morning; two Supper and Film Shows, in conjunction with the Ladies Fellowship; a Fashion Show; and a Fun Quiz. Church and Friend's members have themselves been involved by holding Coffee Mornings at their homes; sharpening tools; along with other activities; and

Friends of St. Mary's Church

individuals and groups making generous donations. We are very grateful for the tremendous support that has been given over the last three years and especially having the final push this year.

Friends have also secured grant funding from several organisations, including English Heritage, who have been very involved in the preparation work for the Project; the All Churches Trust; the Garfield Weston Foundation; the Wolfson Foundation; Leicestershire Historic Churches Trust; and the Jack Patston Charitable Trust; with promises of funding from two further organisations.

cont'd on page 19





Christmas

Christingle service
Family carol service
Carol service
Holy Communion
Christmas celebration

Sunday 9 December	4:00pm
Monday 24 December	4:00pm
Monday 24 December	6:30pm
Monday 24 December	11:30pm
Tuesday 25 December	10:30am

**Saint Mary's
Sibley**



Carol service
Christmas celebration

Sunday 16 December	7:00pm
Tuesday 25 December	9:30am

**Cossington
Parish Church**



Family carol Service
Carol service
Christmas celebration

Sunday 02 December	5:00pm
Sunday 16 December	5:00pm
Tuesday 25 December	9:30am

**Seagrave
Parish Church**



s Services

Church News



<i>Christmas tree festival</i>	Sat/Sun 15/16 December		
<i>Ladies Circle carol service</i>	Monday 17 December	2:30pm	Methodist Church Sileby
<i>Carol service</i>	Sunday 23 December	3:00pm	
<i>Christingle service</i>	Monday 24 December	4:00pm	



<i>Christmas service</i> <i>"The star that couldn't twinkle"</i>	Sunday 23 December	6:00pm	Baptist Church Sileby
<i>Christmas day family service</i>	Tuesday 25 December	9:30am	



<i>Carol concert</i>	Sunday 23 December	<i>See church for time details</i>	Saint Gregory's Sileby
<i>Mass at Syston</i>	Monday 24 December	9:00pm	
<i>Mass at Sileby</i>	Tuesday 25 December	9:00am	
<i>Mass at Syston</i>	Tuesday 25 December	10:30am	





Dear friends,

Is God there? Is God interested in me? Does God care about me?

Many people think that if there is a God, he is probably distant, disinterested and not bothered about people like you and me. The birth of Jesus at Christmas tells us something very different though.

1) **God is there**

When Jesus was born, the Bible claims that God was coming to earth in human form. If that is true then it shows us that God is really there. We do not have to play guessing games about what God is like. We find out what he is like by looking at Jesus.

2) **God is interested in me**

One of the names given to Jesus is "Immanuel" which means "God with us." God is not distant and disinterested. No, he is so interested in us that he came to this earth to be among us. Through Jesus, God wants to know each one of us.

3) **God cares for me**

The reason that God came to this earth in the person of Jesus is because he cares for you and me. The name "Jesus" means "God saves." The Bible says that without God's intervention we are in terrible trouble. Jesus came, therefore, to save us or rescue us. He did it because he cares about us very deeply.

This Christmas.

If you've never really thought before that God is there, is interested in you and cares for you, then do take the chance of coming along to a Christmas service to think a bit more about these things.

From family friendly Christingle services and family carol service to traditional candlelit ones, there should be something for everyone.

With best wishes
Richard Hopkins (vicar)

cont'd from page 15

With all of this effort in raising money for the Tower Repair Project, which will cost over £100000 to complete, it is very pleasing to be able to confirm that the work has already started, actually back in mid-October, with an expected completion date for the Project of the end of February 2013.

During the period of the Tower Repair Project work, other works will be carried out to optimise the opportunity that this time gives. Of course, this will mean fund raising will continue until all activities have been completed.

To this end, our next event will be the Christmas Bazaar to be held on Saturday, 1st December from 10.00am to 12 noon; this will be a combined Table Top Sale and Coffee Morning held in the St. Mary's Centre, Mountsorrel Lane. Tables may still be available to hire for the Sale; contact Eric (01509 813061) for details.

Many of you reading this article will remember the HeArt of Sileby Festival that was held in September 2011; many people, including children from the village schools, were involved in making items for the Legacy Art Piece being prepared by Charnwood Arts from the Festival. This "Piece" is now hanging in St. Mary's Church, and it is a most beautiful attraction for the church. Consideration is now being given to having the "Piece" displayed in other buildings within the village. Look out for any details of this in other notices through Friends.

If you wish to find out more about what the Friends of St. Mary's group is about, our aims and how you may be able to contribute to these please visit our website, which is hosted by the Sileby Village website, at www.leicestershirevillages.com/sileby/friends-of-st-marys-church.html.



Great Summer Offer ! Sileby Day Nursery

**15% discount off 1st invoice when you register
a child by 21st December 2012.**

"a safe and stimulating place to play and learn"

**Quality childcare from 6 weeks to school age
FREE funded hours for 3 & 4 year olds
Safe & secure environment with outdoor CCTV
Fresh, daily prepared meals
Special dietary requirements catered for
All weather outdoor play area
Car parking
Full time & part time sessions available
Open 7.30am to 6pm
*Music sessions by Music go Round**

**To secure your child's place please contact nursery
manager Tracey Brown on 01509 812300**

Sileby Town Cricket Club

IT'LL COME AS NO surprise to anyone reading this that the 2012 cricket season was, to say the least, disrupted by the weather.

Sileby lost 29 senior matches to bad weather during the whole season—forming something of an unwanted record as being the worst season for bad weather and cancellations in living memory.

That said, the season wasn't a complete write off as Sileby's First XI lifted themselves to mid-table security, after a stuttering start to the season, and also got to the semi finals of the County and League cups. The Second XI retained their position in Division Two of the Everards League and the Third XI finished third in Division Six and rounded off their season with a victory over the eventual division winners. The weather had a huge effect on their season as they lost more games than most other sides in and around the top six and two more games completed, rather than abandoned, would have seen them to their third successive promotion.

The Ladies XI had a more successful time of thing, with the Midlands League allowing fixtures to be rescheduled and the ladies finished a very creditable second in Division Two North East, finishing just 17 points shy of winners Plumtree and 49 clear of third placed Lincolnshire Cricket Board.

The junior section was as badly impacted as the seniors as games were washed out to leave it a very fractured season. The Under 17s did make it to the league final, but they came up against a very strong Kibworth side and were blown away by their First XI player Adil Ali, who blasted his way to a hundred to lift the trophy.

Before we finish on the playing side of things, the club is always on the look out for new players

for the senior, ladies and junior sections. If you are interested in playing cricket for the first time, looking to make a move to a new club or fancy becoming a scorer, then please contact the club.

We are always on the look out for quality senior and ladies cricketers as well as looking for more players to become the next generation of Sileby stars. Anyone 17 plus should contact Chairman Nigel Kinch on 07889 904689, ladies/girls should contact Gill Loveridge on 07966 979370 and anyone 17 and under should contact Richard James on 07713 132650 . Finally, the club is on the lookout for a First XI scorer. If you have nothing to do on a Saturday afternoon, have an interest in cricket and fancy turning your hand to electronic scoring, then please contact Nigel Kinch.

What will also not come as a surprise is that with so many games being called off due to the elements, the income of the club has been massively hit during the season and we are now looking for out of season events to help keep the club running.

At the time of reading this, the annual fireworks display will have already taken place and we offer our thanks to everyone who made that possible and more importantly, to those who came along to support the event. We've said previously that Sileby Town is a community cricket club run for the benefit of the community and we've been very fortunate over the years to have received a lot of support from the community. This year we will be putting something back into the community as a donation from the money taken for the fireworks display will be passed towards a local charitable cause.

This year we will be putting a donation towards setting up a stimulus room for young Caitlin Wesson who is a very poorly little girl in need of special care. If anyone has any charitable causes, from within the Sileby parish boundary,

that the club could support during 2013, please contact us at admin@silebytowncc.org.uk.

We're also grateful to Mark Swatland at Costcutter Sileby for allowing us to carry out more fund raising by bag packing on the run up to Christmas. Thanks again go to the generosity of the public for their donations towards the club—it is greatly appreciated.

All that remains is to wish everyone a Merry Christmas and a peaceful New Year and we hope to see lots of you at the cricket ground during 2013 to support your club—hopefully in much better weather than in 2012!

WYX
GVS

BOYS II MEN

**TOP QUALITY EXPERIENCED
HAIRSTYLISTS**

**Friendly Atmosphere and all cuts at
Reasonable Prices**

12b High Street, Sileby
LE12 7RX
☎(01509) 812357

Interesting internet finds

www.stormtrack.co.uk

I “STUMBLED UPON” THIS site when trying to find some slightly better weather; sadly, it does not offer more optimistic weather forecasts, but it is a fascinating website with loads of information.

The weather station is in Mountsorrel—the “Latest Reports” are very up to date, and relevant to Sileby. If you look at “Fun Stuff” you can even find out if you will need to cut the grass in the next few days!

Altogether a fascinating website, well worth visiting.

WYX
GVS



It's a family affair

Continuing our series of articles about Sileby businesses in this issue we feature two very different family enterprises—literally chalk and cheese.

FIRSTLY BRIAN YATES and Son—our Sileby plumbers—a business deeply rooted in the village; Brian's father Horace was born in Sileby in 1894 and celebrated his 100th birthday at his home in Cossington Road where he and his wife Beatrice had brought up their three sons. Brian told me how his business came into being :-

B.Yates Plumbing & Heating

“*I first started in the trade in 1952 when I left Loughborough College School and got a five year apprenticeship with J. Collington & Son of High Street Sileby—I then served two years National Service in the RAF.*

I returned to work at Collingtons, but four months later Mr Collington passed away; in 1959 I started my own business—working from premises in High Street, where the Tesco is now. I employed Mr Edwin Rose—there were so many factories in the village then where we carried out Maintenance and Improvement work - we had always got more work than we could cope with.

In the Sixties we were getting rid of the Pan Lavatories for Water Closets—really modernising Sileby. I remember installing Water Toilets across the yard at Barrow Rd Infants School then spending the next few winters thawing them out and repairing burst pipes each morning so they could open the school!

Lots of people were having a bathroom installed and converting the back bedroom of a terraced

house into a bathroom—and we were fitting a Sink Unit into the kitchen instead of the traditional white sinks—times were moving on.

Then came the advent of Central Heating—mainly solid fuel to start with. To cope with the workload I employed Bob Ellis, David Barby and Michael Gould; later they were joined by my son Anthony.

As the years passed by the heating side went over to gas, and we were appointed British Gas Installers for this area.

There have been massive changes in our trade over the last fifty years—the way people live and the materials we use; en suite bathrooms, fitted kitchens, automatic washing machines, dishwashers etc.

I have had a lot of pleasure doing the work for some lovely people—I retired in 2006, but my son Anthony still carries the business on, giving a competitive local service to the people of Sileby and the surrounding areas.

”

In complete contrast, “Spencers” on King Street is a very new shop—if you have walked past their window you cannot fail to have been tempted by the display of cakes, pastries and bread—all of which are made by the Spencer family. The owner, Paul Spencer, told me that his great grandfather Herbert Everard Spencer had been born in Sileby—during WW1 he was an army cook, feeding the troops in France.

Spencers

In 1953 the family opened a bakery business in Hathern followed later by a branch in Shepshed—Paul remembers that as a child he used to make deliveries in Hathern carrying a basket full of bread and cakes—gradually moving on to helping with actual baking. It is a matter of some pride that everything they sell is made “in house” from basic ingredients—and that many of their products are made from

recipes unchanged since Victorian times.

After going to Catering College Paul worked under Raymond Blanc as Commis Pastry Chef at Le Manoir aux Quat’saisons before spending three years working in the kitchens of the QE2. He gained valuable experience at various other prestigious establishments before finally returning to join the family business in Hathern.

The opportunity to open a shop here in Sileby seemed “right”—Great granddad would approve! and so since July of this year the village once again has a fresh bread shop where Janet and Paul’s niece Stephanie welcome their customers. Stephanie is following the family tradition—she is the 5th generation of the Spencer family to join the catering trade. Spencer’s Traditionals sell so much more than just bread—cakes and pastries, éclairs and sausage rolls, Nelson cake, gingerbread men and freshly filled cobs.

cont’d on page 24

B. YATES & SON

**Plumbing, Heating
& Gas Services**

**Bathrooms
& Showers**

**Gas Safe
Registered**

Mobile: 078088 30697



**Charnwood
Hearing Aid Centre**

Lynne Leeming, MSc RHAD BSHAA

Your local Widex specialist

Existing hearing aid users welcome

5 Staddon Road
Anstey
Leicester
LE7 7AY

Telephone: 0116 236 6633

Free parking in the Nook car park




cont'd from page 23

They are able to cater for special dietary requirements with gluten, egg and nut free products available to order. For Christmas there are mince pies, chocolate logs and Christmas cakes, and they are taking orders for personalised Christmas cakes. A wedding coming up? Spencer's can produce that very special cake to your requirements.

There are ambitious plans to extend the shop—the kitchens are being refurbished to enable some of the baking to be done here in Sileby—eventually Paul will be rearranging

the shop to accommodate bistro-style tables—realistically priced full English breakfasts with real coffee or tea from a teapot will be the first items on the menu—adding the inviting smells of coffee and bacon to the already tempting array of products!

Nelson cake? A scrumptious concoction of rich, moist fruit cake sandwiched between two layers of sweet pastry. Why Nelson Cake—to learn that secret you may need to sample one!

XXX

PH

Look back

IN THIS ISSUE we look back at the Sileby community magazine that preceded Talk@Sileby. The Stockade had 17 issues published between 1991 and 1995. Here we republish the editorial and some poems from issues 10 (Spring 1994).

The full collection of Stockade can be found on the internet at <http://www.sileby-village.co.uk/Stockade.htm> and don't forget all 33 issues of Talk@Sileby can be found at <http://www.sileby-village.co.uk/Talk@Sileby.htm>.

XXX

Editorial

It seems a pity that we have had to advertise for articles for this edition. We, as a committee, are as enthusiastic about the magazine as when we started but it must be remembered that it is for the village with contents dictated by residents. Do you actually want us to continue? Is there any way we could help with articles? - give us the notes and we will "pad it out".

To those of you who do contribute, many thanks and keep it up. To those of you who want to contribute but are hiding your light under a bushel, remember, we don't have to print your name.

So here's hoping that we will soon be swamped with articles, letters, gripes and offers for covers. We know that everyone has something to offer (no matter how controversial).

Please ensure that all articles are submitted as early as possible before the deadline. It takes a lot of time and effort to compile the Stockade and this will greatly assist those of us who willingly give up that time. Thank you for your support.

Poetry

The Old Village Shop

*Sometimes when I'm in the mood
Then the past comes back to me
I recall our old village shop
In the days that used to be
In this dim and fragrant store
You could buy just everything
From cottage loaves to candles
Even baby's bibs or balls of string
When very young I loved to go
On errands for this and that
Some clothes pegs or a card of pins
Rashers of bacon—not too fat
And What a welcome one received
From Bessy in her floral pinafore
When the little tinkering bell
Announced your entry through the door
No pre-packed food, no serve yourself
Bessy would always give advice
On such a multitude of things
While weighing up sugar or rice
And wise old Bill knew all there was
To know about broad beans and such
For as a gardener William had
An undisputed magic touch
And oh! that lovely mingled scent
Of polish, oranges and spice
Of cheese and apples, yellow soap
Cough candy bars and sugar mice
Sometimes if I close my eyes
That haunting scent returns to me
I think again I am in the old village shop
Buying penny buns for tea.*

Bert Underwood



A Birthday Wish

*Count your Garden by the flowers,
Never by the leaves that fall,
Count your joys by Golden hours,
Never when life's troubles call,
Count your nights by stars not shadows,
Count your days by smiles not tears,
And on every Birthday morning,
Count your age by friends, not years.*

Provided by Kaye Machin



Redlands

THE PAST TERM has gone so quickly and here at Redlands we cannot believe that Christmas is fast approaching. The children have had an excellent term, working hard and at the same time enjoying their studies. We have two new members of teaching staff—Mrs Sarah Sadler, our new deputy head and Miss Bryony Best. Both are proving to be valuable assets to the school and are well liked by the children. The number of children in school is continuing to grow and is predicted to increase year on year. We already have a new classroom extension which has been well received by staff and children and are currently in discussions with the Local Education Authority about extending further—exciting times ahead.

The children have had their studies brought to life this term by participating in many different experiences via our creative curriculum. Our children in Year 1&2 visited the Sealife centre in Birmingham to learn all about life under the sea and then recreated their experiences in the classroom by creating the underwater tunnel full of wonderful sea creatures and learned about the associated facts. Children in Year 5&6 have been learning all about World War 2 and visited Beaumanor Hall in their evacuee costumes.

In school, all children are not restricted to just writing in their books – we don't do that at Redlands, instead we bring our creative curriculum alive through interaction and excitement. Year 3&4 children have been looking at our “Active Planet” and have been making their own volcanoes and looking at the various conditions which make them erupt. I never realised that bottles of Coke-a-Cola and mints, when put together could produce such fantastic explosions! Of course the children had a fantastic

time investigating the different ways to make the explosions bigger and stronger.

There are lots of exciting things planned on the lead up to Christmas. The whole school will be visiting the theatre to see Peter Pan, a visit which is always thoroughly enjoyed by all our children. For some, this is their first experience of going to the theatre. A big thank you goes to “Friends of Redlands” who always support this activity by funding half the cost. The Redlands Young Voices Choir will be performing in Birmingham again this year along with hundreds of other school. The same choir will also be performing during the switching on of the Sileby Christmas Lights this year. Keystage 1 have already started to practice their Nativity performance. This is always a fantastic treat and will be the first time our very youngest children will have the opportunity to perform to their parents and carers. Our tradition of inviting friends from the local community to see the performance will continue and we will soon be sending out invitations for the Community Performance on **Tuesday 11th December** where there will be a cup of tea and a mince pie! Celebrating Christmas would not be the same without spending some time at St. Mary's Church and this year will be no different. Our children will be learning Christmas songs that they will perform for family and friends at our carol concert which is always a great way to bring the story of Christmas alive.

Redlands is a great place to be with the team continually striving to ensure that all of our children enjoy their learning experience – as our motto says “We are working together – aiming for excellence”.



Mr Matthew Peet
Headteacher

Golden Days Remembered

Grace Barber wrote a booklet of memories, here we produce a first instalment of those memories. More will follow in future editions of the magazine as space permits.



See page 30

IT APPEARED TO me that after I had made remarks about what happened years ago, and myself being the senior member of the family, I felt it almost a duty as my nephews suggested that I write all these details, otherwise they would be forgotten.

I have tried to relate from my earliest recollections continuing until I joined the Barrow District Council—but that would be another story in itself.

I will begin then by telling you that I was born and lived at Highgate Lodge Farm, which has been farmed by my family from the middle of the last century. I had two brothers and when we were old enough we all worked together on the farm.

The Farm was mostly grass and some arable land of about 350 acres, including some meadow land by the River Soar in Sibley Parish.

We had a large dairy herd of cows, we kept all the heifers and fattened the bullocks, we had about 350 sheep, many horses, always some pigs, hens, ducks, geese, also some pet rabbits

The first thing that I can remember was of my brother Harold pushing me in the wheelbarrow

along the edge of a deep ditch and tipping me into it, unfortunately for myself and my mother, the ditch contained all the nasty suds which came from the sink through an underground pipe which were then deposited into this ditch. I was black—I remember it was very difficult to even lift me out of the ditch—my mother had to

take me into the kitchen, take off all my clothes and put me into the bath—my mother was really so very cross as she had so much to do.

Another time I had wandered off along the farm road to a man who was putting stone on the road. I could not be found and the big deep pond near the back door of the farm house was dragged in the hope of finding me. I was later found—my red coat shining one third of a mile away.

You understand that the farm house is in the middle of the land, one mile from the centre of the village—all very quiet and lonely—not to me— but perhaps would be to other people—but I loved the whole of it. I knew every hill and hollow. My grandfather had said that it was so good here a person should live forever.

The farm is situated on a high ridge of land and can be seen from all directions. There was hardly a tree that I could not climb and I wandered about the farmyard talking to the beast and the horses and they all knew me. As a small girl, I used to carry a kitten around with me and one of the men, the cowman who I did not like because he

cont'd on page 28

cont'd from page 27

was cruel to the beast and used a stick, would tease me and say “pretty little pussy” (I could not pronounce my r’s)—and I said to him “You steal eggs”—the hens would lay in the mangers and on the hay. We had heard from his next-door neighbour, who also worked for us, that cowman was never short of eggs. My father fetched me into the kitchen and hit me very and said that never again must I repeat anything that I had heard in the house. It was the only time that my father hit me. I think that my father was very fond of me. He always said “if you cannot say good of a person do not say anything”—I mean generally not in this case.

One of the last jobs in the evening was to pump the water to fill the large stone trough in the yard so that when the horses came in from work, the cows also, when they came in to be milked, could

all have a good drink, and another one before they were turned out the fields. It was a big pump with a long iron handle and I used to stand on a big stone to help my father pump the water. It was very hard work, the well was 80ft deep.

We had no drinking water. My father would bring that up from the village to the farm in large 17 gallon milk churns. We also had another well that was on the orchard side of the house. We used that water for washing as it was soft water—the yard water was hard.

Before my brothers and myself were born, help would be needed in the house and young people would come to the High Street in Sileby and could be hired. My grandparents always hired a young girl and a young man. Fortunately it was a large house with ten rooms.

Grace Barber

Highgate Surgery P.P.G

Highgate Surgery are now advising flu jabs for all pregnant women, everyone over the age of 65 years and those with chronic diseases such as diabetes and heart disease and those with a low immunity. You need to book in at the Surgery for an appointment for this.

They are also conducting FREE health checks for anyone 40-74 years. This is to check for anyone at risk of developing heart disease, stroke, kidney disease or diabetes. The check takes about 20 minutes when height, weight, blood pressure and a simple blood test for cholesterol level are checked. Again you need to ring the Surgery for an appointment.



Friends of Highgate Surgery Patient Participation Group

Informal coffee morning at
Sileby Community Centre on
Saturday 1st December 10.30 till 12.30.
Theme - Preventing Cancer

www.highgatemedicalcentre.co.uk

Protect your home

From PC Chris Hayton (PC 1948) beat officer for Sileby.
Help secure your home from burglary Police are giving
the following guidance to home owners.



These points are during the day, keep your doors and windows secure at all times. Consider using window shock alarms, restrict access to the rear of your property, consider joining a neighbourhood watch scheme. Be aware of anyone acting suspiciously near your home and report any incidents immediately.

At night, Use light timers to make your home appear occupied when you are out. Use external security lighting around your home. Lock all doors and windows when you go to bed. Don't advertise your property to thieves make sure it can't be seen through the window. Be aware of people acting suspiciously near your home and report incidents immediately. If you need support in an emergency contact the police by calling 999, for non emergency matters call 101.

Stay informed of policing news in your area and sign up to www.neighbourhoodlink.co.uk
Been subject to a crime? Or want to prevent one from happening? Go to www.leics.police.uk/support.
Leicestershire Police is keen to hear your views about policing in your area. Please take a moment to visit www.leics.police.uk/haveyoursay and complete our on-line survey.



Hospice raffle offers choice of first prize!

How would you like to win **£10,000** in time for Christmas?

Just think of what you could do with a sum like that.

Or imagine yourself behind the wheel of a sleek and stylish new **Mini First**.

These two fantastic prizes offer a choice to the winner of the LOROS Christmas Raffle so don't delay. Tickets are available from early October, the closing date is **Monday 10th December** and the draw will take place on **Wednesday 19th December**. There will also be an additional draw taking place with all early entries having the chance to win a £10 M & S voucher.

Not only are our raffles a great way to win prizes, but every single ticket bought helps support the vital work of LOROS. Our hospice and home support services offer free, caring expertise to patients and families who may be spending precious time together and it is vital that these services continue in the future.

Help us to carry on providing care for the people of Leicester, Leicestershire and Rutland by joining in the fun. To order a book of tickets to sell or to buy tickets yourself call the lottery team on 0116 2318430.



Lottery

Don't forget it could be you making that choice of first prize, and just in time for Christmas!

Do you use the number 27 bus?

If you do, I should be interested to hear any comments you may wish to make about the service, be they complimentary or critical.

I have been keeping track of passenger numbers since 2009. They rose in 2010 and again in 2011 but in the first eight months of 2012 have begun to show a decline. Let's hope that by the end of the year that has been halted. Any service failures which may make people reluctant to use the number 27 are a cause for concern so I should be grateful if you would let me know if there are any cases of buses not running according to the timetable or not arriving at all. I can then keep County Council officers informed and they in turn can follow up complaints with the bus company. Equally, if you are finding the service valuable to help you get around I should also like to know.



Richard Shepherd, County Councillor

73 Leicester Road, Quorn, Leicestershire, LE12 8BA

Telephone: 01509 413903

Email: richard.shepherd@leics.gov.uk

Website: www.leics.gov.uk/shepherd

Talk @ Sileby Statement of Accounts 1st November 2011 – 20th September 2012.

The accounts have been prepared in accordance with applicable accounting standards.

RECEIPTS		PAYMENTS	
BALANCE/FORWARD	£1523.06	PRINTING – ISSUE 30	£654.00
INCOME FROM ADVERTISERS	£2488.00	PRINTING – ISSUE 31	£654.00
OTHER INCOME	£42.00	PRINTING – ISSUE 32	£654.00
			£1962.00
		OTHER EXPENDITURE	£224.00
		BALANCE IN HAND	£1867.06
	£4053.06		£4053.06

The committee acknowledges their responsibility under the constitution for keeping proper accounting records for preparing accounts.

Based on my work as appointed internal auditor nothing has come to my attention to refute the committee's confirmation that the above financial statement has been properly prepared from the accounting records for the year ended 30 September 2012 and is therefore a true record of all transactions during that period.



Photo on page 27: Back row left to right—Sandra Fould, Leah Moulden, Janet Brigam, Christine Hetterley, Jane Wright. **Second Row left to right**—Micheal Mercy, Raymond Shuttlewood, Graham Preston, Jeff Shepherd, Brian Saunders, Elizabeth Seal, Pamela Trasler, Faith Oswin, Keith Wilson, David Burton, Paul Newbold, Roger Wells. **Seated left to right**—Rita Cornish, Maureen Baker, Jean Marshall, Gillian Yendal, Madeline Cox, Rosemary Briggs, Marlene Harriman, Rita Brooks, Elaine Edwards. **Front row left to right**—Roger Reves, Mick Reynolds, Peter Smith, Richard Tyler, Danny Green, Kerry McKendrick, Ralph Lockwood, Keith Fogg, Martin Beadle



CarbonLegacy

Harnessing nature's energy

INVEST IN YOUR FUTURE



UP TO 17% RETURN ON INVESTMENT

INSTALL BEFORE 1ST AUGUST
TO BEAT THE PLANNED TARIFF CUTS

PAYMENTS **GUARANTEED FOR 25 YEARS** (INDEX LINKED)



DAVID HILL
MANAGING
DIRECTOR



BIOMASS

UP TO **60%** CHEAPER THAN OIL.

GOVERNMENT PREMIUM GRANT OF **£950**
AVAILABLE NOW!

DOMESTIC RHI (RENEWABLE HEAT INCENTIVE)
DUE IN SUMMER 2013

Tel: 0800 644 1712 or 01664 822 499 www.carbonlegacy.co.uk



green energy centre
freedom of information



Showroom and Advice Centre:

The Service Station, Melton Road, Hickling Pastures, Melton Mowbray, Nottinghamshire, LE14 3QG





LANZA

50% OFF

YOUR FIRST CUT & FINISH AT LANZA

Book now by calling **01509 812 968** and quote "*Talk@Sileby*"
then simply present this advert at your appointment.

www.lanzahair.co.uk Join us on  LanzaHairDesign

Lanza Hair Design | 57 The Banks | Sileby | Leicestershire | LE12 7RD
For appointments call **01509 812 968**

*Appointments subject to availability with selected stylists. Not to be used in conjunction with any other offer. Offer only for new clients of Lanza Hair Design on their first visit. Reference must be quoted on booking and advert presented at appointment.