

# Talk@Sileby

Village newsletter



34

Spring 2013

[www.sileby-village.co.uk](http://www.sileby-village.co.uk)

## SILEBY WMC WELCOMES OLD & NEW MEMBERS WHATS ON



EASTER MONDAY DISCO 12.30 – 4.00PM



Easter Bonnet Competition 1<sup>st</sup>, 2<sup>nd</sup> & 3<sup>rd</sup> prize. Easter Egg for every child

.....

Sat. 8<sup>th</sup> June 'WILDEST DREAMS' (formerly Wrathchild) LIVE in the Bar

.....

WATCH LEICESTER CITY PLUS BIG GAMES LIVE IN HD ON OUR BIG  
SCREEN

### FREE ROOM HIRE! HURRY

BOOK NOW  
QUOTE - SWMC01

GREAT DRINKS PRICES, FULL BAR, AND USE OF  
STAGE AND KITCHEN



SILEBY WMC – 1 KING STREET SILEBY LE12 7LZ - **01509 812475**  
(QUOTE REF SWMC01 FOR FREE ROOM HIRE) (£50 RETURNABLE DAMAGE  
DEPOSIT PAYABLE UPON BOOKING) - PROBABLY THE BEST VALUE  
FUNCTION ROOM FOR HIRE IN LEICESTERSHIRE. NOW TAKING BOOKINGS  
FOR ALMOST ANY OCCASION.



# Foreward

**W**ELCOME TO ISSUE 34 of Talk@Sileby. This magazine is written by the community for the community and we currently have a group of people who are passionate about the future of this publication. Do you feel like joining us? Ideally we need to recruit someone who can manage our advertising so if you can spare a few hours a year to talk to the local businesses please get in touch.

This edition's front cover shows Mill Lane Sileby in one of the recent floods. This area is part of the flood plain as is Slash Lane and Mountsorrel Lane so after heavy rain they tend to become flooded and this has occurred several times this winter. This picture was taken by Robert Butler who is Sileby's flood warden. If your property is likely to be affected by flooding get in touch with Robert and he can arrange for sandbags to be delivered to you.

Robert, also a Parish Councillor, keeps in touch with the flood situation via the environment agency and alerts the community when flooding is likely to occur and keeps up to date with the situation during the flood times. The easiest way of getting this information is via the Sileby Community Facebook page, sign up there to take part in the discussions, not just about flooding but any subject that we as a community want to talk about.





**Talk@Sileby, by Sileby people. For Sileby people.**

---

## Copies of Talk@Sileby

Copies can be obtained by post at a cost of 50p per issue which includes P&P.

Please make cheques payable to: Sileby Village Newsletter.

Back issues of Talk@Sileby can be viewed on the internet at [www.sileby-village.co.uk](http://www.sileby-village.co.uk)

# Contacts

**Editor:** Dave Palmer, 60 Heathcote Drive, Sileby 01509 816610  
d.r.palmer@talk21.com

**Advertising:** Lionel Blower 01509 816287  
landr25@btinternet.com

**Printed by:** Norwood Press, Ellistown 01503 262020

If you would like to give your feedback, articles or letters these can be sent to the Editor or you can now use the internet forum at [www.sileby-village.co.uk](http://www.sileby-village.co.uk)

---

## The advertising rates for Talk@Sileby are listed below

Quarter Page £30

Half Page £50

Full Page £80

Inside front/inside back cover £105.00

Back cover £135.00

**These prices are per issue.** 10% discount for booking and paying for three insertions in advance.

---

**Disclaimer:** The views expressed in this magazine are the views of the contributors and not necessarily the views of the talk@Sileby.

## Talk Sileby

<b>Magazine Co-Ordinator:</b>	Ken Jones
<b>Editor:</b>	Dave Palmer
<b>Secretary:</b>	Pat Haswell
<b>Treasurer:</b>	Lionel Blower
<b>Societies Co-ordinator:</b>	Lionel Blower
<b>Auditor:</b>	Richard Kinton
<b>Design/Layout:</b>	Mathew Hobson

Your community magazine is delivered to every home and business in Sileby; that's about 3,500 addresses!

It is published three times a year: in November just prior to the Christmas lights "switch on", in Spring around about Easter and in the summer.

We have no political, commercial or religious allegiance and aim to be impartial and independent. We are entirely self funding through advertising revenue.

We are here solely to promote Sileby, its businesses, residents, clubs, societies, associations, schools and churches.

# A message from Nicky Morgan MP

I SHOULD LIKE to start by wishing Sileby Conservative Club, which opened its doors in 1912, a Happy 100th Birthday! I had a great afternoon recently joining others including one of Sileby's Borough Councillors, Ken Jones, and your County Councillor, Richard Shepherd, to celebrate this landmark event in the history of a well-supported village institution. Congratulations to Tricia Ward for organising such a happy occasion.

Life as your Member of Parliament continues to be busy. A lot of my time is spent responding to the hundreds of letters and e-mails on policy matters sent to me every week. My constituency office is also kept very busy with the many cases and requests for help which are brought to our attention. These range from benefits queries, problems with the child support agency or UK Border Agency or other organisations such as HMRC through to issues experienced with the NHS. If you think I might be able to help you please just call or e-mail (details at the bottom of this article).

On Friday 22 March the Minister for Business and Enterprise, Rt Hon Michael Fallon MP, will be visiting Loughborough to answer questions from local businesses – if you would like to attend this breakfast session please let me know.

I have been busy attending and organising other events including a question and answer session with local churches organised by the Conservative Christian Fellowship (which I am a trustee of) and an International Women's Day event. Through this latter event I wanted to encourage Year 11 – 13 female pupils from across my constituency to consider careers in sectors where

female employment is currently low—including engineering and manufacturing, construction and quarrying.

I am working with Loughborough College and local businesses and employers, on the College's scheme called "Bridge to Work". The aim is for school students in years 9–13 to visit the College for after-school courses and to think about what they want to do when they leave school and which skills they will need for the industry of their choice. I am passionate about helping young people to really identify the best career for them and to maximise the choices on offer to them. If you are interested in finding out more, or if you are employer who would like to become involved, please do get in touch with me or you can find more details at [www.loucoll.ac.uk/bridge2work](http://www.loucoll.ac.uk/bridge2work)

At Westminster I have been meeting with various Ministers to discuss issues of interest to constituents. This included a discussion with the Employment Minister, Mark Hoban MP, to discuss work capability assessments and the Health Minister, Anna Soubry MP, to discuss lowering the age for cervical cancer screening. I am also due to meet the Planning Minister, Nick Boles MP, to discuss planning matters and the Environment Minister, Richard Benyon MP, to discuss recent flooding.

Finally please do not forget to check out my website, [www.nickymorgan.com](http://www.nickymorgan.com), which contains helpful information and links on a number of issues including help with heating bills, help with housing issues, information about the new Green Deal, guidance on what to think about if you are facing family separation and information about employment support allowance and work capability assessments. You can also sign up for my monthly e-newsletter there.

To contact Nicky please call 01509 262723 or e-mail [nicky.morgan.mp@parliament.uk](mailto:nicky.morgan.mp@parliament.uk) 

Nicky Morgan





# Grace-marie's

**A**S YOU APPROACH Grace-marie's shop on High Street there is no clue that it is really a Tardis—the gateway to a whole world of crafts and cakes; the bright and interesting shop window only hints at the numerous and varied delights inside. Initially you notice that it is a lovely old-fashioned cake shop—inviting looking tables and chairs and some very tempting cakes—coffee and a cake would be pleasant!

Gradually you realise that this is very much more than a shop selling rather special cakes—maybe you will join one of Leeann's workshops where small groups of adults or children decorate a cake or cupcakes—taking home their creations in a proper cake box. If this inspires you to carry on cake-decorating at home, here you can buy all the things you need to decorate your own cakes

There are themed workshops for special occasions—decorate a cake for Mother's Day or cakes and biscuits for Easter—and just look at these Mad Hatter's Tea party cupcakes!

Leeann, the proprietor, told me that she had always been an enthusiastic “crafter”, over the years trying her hand at various skills, including cake making and decorating. Initially she made and decorated cakes just for friends and family, but as her reputation spread the cakes took over more and more of her time. About five years ago she decided to make a career change, founding “Grace-marie's” making bespoke birthday and wedding cakes and novelty cupcakes. This naturally led to her providing a complete catering package for children's parties—and running cake decorating workshops.

Have you ever fancied having a go at decoupage, crochet or rag-rugging? Leanne organises monthly evening craft workshops at Bishop Beveridge Club in Barrow; all the tools and materials you need to try your hand at these skills (and various other crafts) are provided, and an expert tutor shows you how make a unique handmade expression of your hidden talents!

Eventually it became obvious that Leeann needed a base for her various enterprises so looked around for a shop to rent; living in Barrow and married to a Sileby lad she couldn't resist it when the old butcher's shop in Sileby High Street became vacant—"It just seemed right" she told me. In October of 2012 the doors to "Grace-marie's" opened for the first time. Having the shop has enabled Leeann not only to display her own products but also to provide a showcase displaying other crafters' wares. Go through the door to an Aladdin's cave of handmade items—patchwork, cushions and jewellery, cards and handmade novelty soaps—and Felt Fairies. At [www.grace-maries.co.uk](http://www.grace-maries.co.uk) the shop bell tinkles as you go in for a preview of the range of gifts and craft materials in the shop—do look at the Cake Picture Gallery—you will be astounded by Leeann's ingenuity in decorating very special cakes for very special occasions.

Grace Marie's Sileby workshops for children and adults provide the inspiration, tuition and materials for many craft projects—and further supplies of materials can be purchased to enable you to continue with your chosen craft at home. In the shop patchwork fabrics and knitting needles, glue and glitter, bracelets and beads—felt and furbelows, ribbons and buttons all jostle for your attention alongside the wide range of unique handmade gifts.

If you're still stuck for a present for mum, your best friend or a grandchild, why not treat them to a session at one of Leeann's workshops—the pictures on the website testify that it will be a truly memorable gift.



## *Grace-marie's Cakes and Crafts*

*Homemade Cakes  
Craft Workshops  
Handmade Gifts  
Cake & Craft Supplies*

*Tea, coffee and Cakes  
available limited covers  
To eat in or take away*

*6 High Street, Sileby  
01509 412431  
07972948100*



# Sileby photographic society

**T**HE SILEBY PHOTOGRAPHIC Society is now entering the final months of another successful season and the programme for the last few meetings are shown below. We have had several new and active members join us and the Society continues to grow.

If you are interested in photography and would like to improve your skills then come along to our weekly meetings on Monday evenings at the Community Centre. Visitors are always welcome.

The new season will begin in September and the programme of events will be featured in the next issue.



April 8th	Members' Short Displays	
April 15th	Second Quartely Competition	Judge: Steve Myalll EFIAP BPE4*
April 22nd	Prints with Digital Demonstration	Malcolm Sales ARPS
April 29th	A Printer's Journey	David Severn DPAGB AFAIP
May 13th	Photographing Models	Steve Myalll EFIAP BPE4*
May 20th	Annual General Meeting	
June 3rd	Cuba and Other Recent Trips	Alan Millward FRPS MPAGB
June 10th	Third Quarterly Competition	Judge: Ralph Bennett
June 17th	Social Evening	

## Get on your bike!

**I** DECIDED THAT AFTER living in Sileby for the last 4 years that I would finally do something for the community! So I joined Facebook (again) and found the Sileby Community Page. I soon realised that the page was mainly used to keep local people informed of the flood/train/road works situations, so I decided to put a call out to see if anyone was interested in getting together for local Cycle Rides? I was overwhelmed by the response; a little help was needed creating and adding an event to the Facebook page but soon a date and time was set!

So one sunny Saturday morning in Feb, 13 or so people arrived outside Glenn Lewin Family butchers ( I needed my pre-ride sausage roll, so the meeting point seemed logical to me) people from all over the village came, we had the very young who were full of excitement to the less than impressed who had been forced out by peer pressure! But all that aside we all had a smile on our faces! We set out all together and the pace was gentle, heading towards Watermead CP, only stopping a few times for the group to catch up.



We passed the Hope and Anchor on the way to Watermead, it was very apparent that some of the group felt at home here and there was even an attempt at getting inside for a swift one...but not even half way through the ride, we needed to press on. A quick lap of the John Merricks and King Lear lakes had us heading back along the return leg, however, some of the bikes were starting to struggle. A pit stop was needed and some minor tightening of nuts and bolts was needed.

This time at the Hope and Anchor the doors were open and a few pints were sunk. The ride back along the river bank was full of joyous banter and people laughing and having fun and I thought to myself that after years of professional Mountain Biking a simple ride along a River with strangers and friends alike was possibly the most rewarding ride I have ever had.

If you would like to join us all you need is a bike in full working order, cycle helmet and a sense of community spirit ( and a few quid for a pint), come and meet us for our next ride. First Saturday of each month 11.15am\* outside Glenn Lewin butchers. All ages and abilities are welcome, U-18's need an accompanying adult. The ride is at a very slow pace with plenty of stops along the way.

For more information contact the Sileby Community page on Facebook . Adam Johnson MBCuk \* check on the Facebook page for accurate dates and times.



# B. YATES & SON

**Plumbing, Heating  
& Gas Services**

**Bathrooms  
& Showers**

**Gas Safe  
Registered**

**Mobile: 078088 30697**

## BOYS MEN

**TOP QUALITY EXPERIENCED  
HAIRSTYLISTS**

**Friendly Atmosphere and all cuts at  
Reasonable Prices**

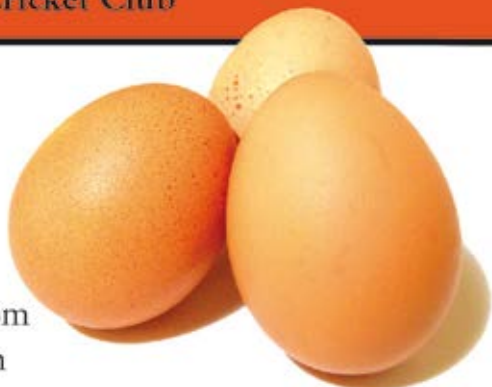
12b High Street, Sileby  
LE12 7RX  
☎(01509) 812357



# SUNRISE *eggs*

Sponsors of Sileby Town Cricket Club

Sunrise Poultry Farms Ltd.  
Seagrave Road, Sileby,  
Leicestershire LE12 7NJ  
Tel: 01509 812441  
Fax: 01509 814601  
email: [info@sunrise-eggs.com](mailto:info@sunrise-eggs.com)  
web: [www.sunrise-eggs.com](http://www.sunrise-eggs.com)



## Sileby Pet Supplies

71 King Street, Sileby, Leicestershire

**Tel: 01509 812908**

Large selection of pet food, treats and  
accessories  
Fishing Bait and Tackle  
Agents for Burns dog and cat food



*FREE Local  
delivery on  
orders over £5*

### **HAVE YOU MADE YOUR WILL YET?**

Or is your old Will out of date?  
**MAKE SURE YOUR ASSETS GO TO THOSE YOU LOVE.**

For Wills - Trusts -  
Estate Planning & Lasting Power of Attorney

We come to you! For an appointment or a brochure telephone  
**Mrs Chris Thomas, Mrs Pam Draycott or Wayne Cooper**

**01509 507334 (Home)**

**08450 568571 (Office)**

*In-Home Legal Services*

90 The Meadows, Shepshed, LE12 9QN  
Member of The Society of Will Writers

We have our own Company Lawyer and are part  
Of the Skipton Group of Companies

# Sileby Conservative Club

## Celebrates 100 years

**T**HE SILEBY & District Conservative Club celebrated their 100 year anniversary on Saturday the 19th January 2013. In a light-hearted speech the Club Secretary, Tricia Ward thanked all members and their guests for attending and wished the club well in their next one hundred years. The event was attended by Mrs Nicky Morgan MP, Mr Richard Shepherd (Leicestershire County Counsellor), Mr Ken Jones (Charnwood Borough Counsellor), President of the Club Mrs Kay Machin, the Committee, Club Members and their Guests.

Light refreshments were provided for all present and all members and guests enjoyed an excellent DVD presentation of Old and New Sileby presented by Mr Lionel Blower of the Sileby Historical Society. Mr Jeff Rose and his family made a wonderful display of pre-1960's photographs of Sileby people and everyone got involved trying to put names to the faces in the pictures. This as you can imagine caused lots of laughter as members took a trip down memory lane.

The Club began its life as the Sileby & District Constitutional Club at 26 Cossington Road on Saturday the 18th January 1913. The land was generously donated by Mrs Perry Herrick and the building itself cost £1,000 with an estimated £250 spent on furnishings. The contractors were Messrs Thompson and Gambell of Quorn and the architect was Mr Cecil Ogden of Leicester. Approximately 250 people were present to witness the formal opening but unfortunately as the original telegram states the Duke of Rutland was unable to attend owing to a chill caught whilst out shooting the day before!

Until the county boundaries changed the Club

was amalgamated with Melton Mowbray and run solely by the men of the club. However the woman formed their own committee and during their time proudly raised thousands of pounds for the club and various charities.

The club still conducts its business from the same address today as it did 100 years ago. With the economical climate the way it is the club suffers as many clubs do but the Committee along with Alison and her staff do all they can to keep the club running.

The club boasts a full size snooker table, pool table and long alley skittles along with various teams such as darts and cribbage. Bingo is played on Wednesday evenings and Sunday afternoons in the club room downstairs and we have a fully functional club room upstairs for parties and functions. If you haven't been to one of our Side Splitting Comedy Nights you're missing out and Texas Hold'em Poker is played every Friday night at 7.30pm. The Club also provides various live entertainments throughout the year to suit all ages which is always advertised on the club billboards and look us up on Facebook under Sileby Constitutional Club. We have Cloud9 Disco coming to the club on Saturday the 9th March and a band called The Catch 22 on Saturday the 30th March.

The Sileby Conservative Club has always been proud of the events held during the year such as The Flower & Vegetable show, Santa Sunday, Sileby SummerJam, Ladies Pamper Nights and Millionaire's Night all held in aid of local charities, LOROS and Air Ambulance. Alison and the committee would like to say a big thank you to their members for supporting the club and we look forward to seeing you all soon. ❧❧

# Sileby garden gnomes gardening group

**S**ILEBY GARDENING GNOMES meet on the 2nd Wednesday of the month at 7.30pm in the Sileby Methodist Chapel Rooms in King Street, Sileby. They are a friendly group of about 25, but are always looking for new members.

In March the "Down to Earth" team from Radio Leicester paid a visit to Sileby Bowls and Tennis Pavilion to join with the "Gnomes", when members of all three clubs were able to ask any gardening questions.

April sees an interesting talk by Alan Tyler from the National Trust about Calke Abbey.

May is the A.G.M. and afterwards a real treat with Lionel Blower from Sileby Photographic Society showing slides of "Old Sileby" and more.

June sees the "Gnomes" going by Special

Invitation from Liz Astill on a visit to Cambeyfield.

At the start of the New Season in September a "Harvest Festival" is planned when members and friends can show off their best fruit and vegetables and flowers. (keep a look out for the posters in the village)

Also planned for next year is a visit to The Green Place to see how we can all help to better the environment.

Although Christmas seems a long way away planning begins early with the "Gnomes". Last year saw four of the group come third in the "Best dressed stall" at the Winter Wonderland. This year they hope to do better! So please come along to a meeting and swap ideas on gardening as well as listening to some exciting speakers.





# Inspirations Floristry

Come and visit our new shop on the High Street in Sileby.

We can create all styles of floral work for every occasion, from traditional and hand-tied bouquets and arrangements for birthdays, anniversaries, weddings, funerals and the more unusual floral creations to provide that additional wow factor. Delivery available.

[www.inspirationsfloristry.co.uk](http://www.inspirationsfloristry.co.uk) \* 01509 815505



## R H Plastering and Building

Local plasterer, over 20 years in trade

All aspects of plastering, rendering, damp-proofing, coving and building

Private, commercial and insurance work undertaken

Contact Richard Herbert for a free quote and advice.

**162 Ratcliffe Road  
Sileby  
Leicestershire  
LE12 7QA  
Tel: 01509 812109  
Mobile: 0794 1170 230**



## DAYBOAT HIRE

SELF DRIVE  
OR  
SKIPPERED TRIPS

"For a great day out on the river"

Bring a picnic or head for a riverside pub.

Boats seat up to 12 people,  
one has wheelchair access



WIRE BOATS - CHANDLERY  
WOODEN - SERVICES  
Tel: 01509 812109  
Fax: 01509 812109  
Email: [enquiries@silaby.co.uk](mailto:enquiries@silaby.co.uk)

**Silaby Mill Boatyard Ltd**  
MILL LANE SILEBY, LEICESTERSHIRE LE12 7JX



**SMARTLY STITCH**  
**TAILORS**

**CLOTHING ALTERATIONS & REPAIRS**  
**Professional Alterations and Repair Work**  
Trousers, Jackets, Coats, Skirts, Dresses and Many Other  
Garments, New Zips Fitted

**Made to Measure Curtains**  
Alterations also undertaken

**Leather Garments Bags Repaired**  
Altered and Repaired And zips fitted

**PROFESSIONAL**  
**DRY CLEANING AGENTS**

**Motorbike, Equestrian & Leather Clothing**  
Repaired and altered

**SMARTLY STITCH**  
**TAILORS**

1a Little Church Lane (Next to St Mary's Church)  
High Street, Sileby LE12 7NE  
[www.smartlystitch.co.uk](http://www.smartlystitch.co.uk)  
**TEL: 01509 815658**

**WIDEX**  
HIGH DEFINITION HEARING

**Charnwood**  
**Hearing Aid Centre**

Lynne Leeming, MSc RHAD BSHAA

**Your local Widex specialist**

**Existing hearing aid users welcome**

5 Staddon Road  
Anstey  
Leicester  
LE7 7AY

**Telephone: 0116 236 6633**

Free parking in the Nook car park

**BSHAA**

**hpc** health professionals council  
registered



# Your letters

Dear Sir,

I feel I must put "pen to paper" or "finger to e-mail". I have just returned from a walk up Seagrave Road, to see how the new houses are progressing, and have never been so disgusted in my life! No! not with the new houses but with all the dog poo on the grass verge from Jubilee Avenue towards Seagrave. I would think that the whole of Sileby's dogs are taken here for that one purpose. It is NOT the dogs I object to but their very IRRESPONSABLE AND THOUGHTLESS OWNERS. Don't they know about cleaning up after their dog? Don't they care about other people? I would like to suggest that C.C.T.V. be put there to see who the culprits are. OR maybe I will hide in the field with my camera!!!

Yours disgustedly,  
An Ex- dog owner.  
Name and address supplied.

## Send your letters to the editor.

Dave Palmer, 60 Heathcote Drive, Sileby.  
Or email to [d.r.palmer@talk21.com](mailto:d.r.palmer@talk21.com).  
Please include your name and address  
(not for publication if you wish).

# Parish walks 2013

(26th Year)

**W**HY NOT COME and join us and enjoy exploring the local parish footpaths and countryside? It's a chance to meet with new people and take some healthy exercise. Everyone welcome. All walks start at Sileby Community Centre at 7.00p.m. led by John & Beverly Burton and Dave Thompson.

Tuesday April 16th	Sileby Mill, Cossington Meadows, River Soar, Cossington Old Mill, Platts Lane, Cossington Meadows, Cossington Road.	4 miles
Tuesday May 21st	Barrow Road, River Soar, Mountsorrel Lock River Soar, Bond Lane, Old Mountsorrel Quarry, Mountsorrel Hills, Sileby Mill.	4 ½ miles
Tuesday June 18th	Memorial Park, Seagrave, Park Hill, Padge Hall, Ratcliffe College, Ratcliffe Road.	5 miles
Tuesday July 16th	Ratcliffe Road, Ratcliffe College, Ratcliffe on the Wreake, Humble Lane, Cossington Church, Cossington Road.	5 ½ miles
Tuesday August 20th	Cossington Road, Cossington Church, Platts Lane, Old Gravel Pits, Cossington Mill, River Soar, Sileby Mill.	4 ½ miles

All persons taking part in these walks must understand that they do so at their own risk.

If you enjoy walking and would like to walk more often, the Loughborough & District CHA Rambling Club has a weekly programme of local walks and occasional bus rambles. If you would like more information please ask John or Beverly for a current programme of walks.



---

## St Mary's church, Sileby, open for you

**S**T. MARY'S CHURCH in Sileby will be open each week on a Wednesday afternoon from 2.00–4.00pm starting April 10th 2013.

There will be tea and coffee available as well as people to chat with or to just listen to you. So if you feel lonely and want some company, if you want a change of scene or somewhere peaceful then come on in—we are open for you!

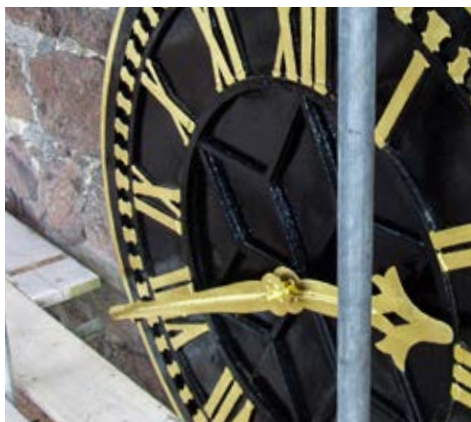


# The church tower

**T**HE LAST DAY of January was a glorious blue-sky day but the wind was icy cold—I didn't envy the two men working on a pinnacle at the top of the Church tower. The tower was built in the middle of the fifteenth century—about the same time as Richard III was born. A survey in 2006 found that the tower was in urgent need of a considerable amount of repair work—in particular the “battlements” (merlons) at the top of the tower were unsafe—in some places the mortar had fallen away completely and daylight could be seen through the joints. Some blocks were at risk of falling so the most dangerous ones were removed and stored pending repair work. The pinnacles needed attention, and large areas needed re-pointing.

*cont'd on page 18*





The “Friends of St Mary’s” (FOSM) had been formed in 1999 to raise funds to help with the maintenance of the fabric and to ensure not only that the church continues to be an important place of worship but also as a centre for the community. They had already made substantial contributions to roof repairs and refurbishment of the electrical system—now there was a new challenge. It was estimated that repairs to the tower would cost over £100,000. Fund raising projects were organised and gradually the money was raised; The Friends are particularly grateful to English Heritage who promised a substantial grant of Heritage Lottery Funding which enabled them to apply to other organisations for support. Through events organised by FOSM many Sileby people have given their time, expertise and donations to help fundraising in the village—over half the money needed for the repairs has been raised here in Sileby—the balance has come from grants and donations made by various individuals and charitable organisations.

In 2010 meetings were held with English Heritage and plans for the repairs were formulated. Keith Hamilton RIBA Dip Cons Accredited Conservation Architect of B3 Architects, Loughborough was appointed to see the work through to completion—his help and support has been greatly appreciated. Tenders were invited for the repair of the stonework, and a local firm—Midland Stonemasonry of Loughborough was awarded the contract. Work commenced in mid October 2012. The scaffolding took two and a half weeks to erect and by November the work was well under way. The weather could hardly have been more unkind—never-the-less, the project has gone ahead—and has been completed on time—a real tribute to the stonemasons. They have done extensive re-pointing, using various

mixes of traditional lime mortars. The different mixes were needed because several types of stone were used in the original construction, and with lime mortar it is not a case of one-size-fits-all—the correct mix must be used to bind each type of stone.


The merlons have been rebuilt, with stainless steel ties inserted to ensure that they never again become unstable. The lichens and grime of centuries have been removed from the pinnacles and other stonework—damaged stonework replaced and large areas re-pointed.

While this work has been going on the Parish Council undertook to have the church clock totally overhauled—the whole mechanism was cleaned by Smiths of Derby and worn or damaged parts replaced. The faces have been repainted and the hands and numerals gilded with real gold—once again the church clock can be seen in all its glory—telling the correct time!

Overall the work has cost in excess of £120,000 (this includes the repairs to the clock)—FOSM are enormously grateful to English Heritage, Heritage Lottery Funds. Other organisations from which grants have been received are Allchurches Trust, Jack Patson Trust, Garfield Weston Foundation, The Wolfson Foundation, Listed Places of Worship Grant Scheme and W H Sharpe Trust. Also grateful thanks to the people of Sileby who have generously supported the fundraising efforts. Without this support the work could not have gone ahead. In our turn, we, the villagers of Sileby, are grateful to FOSM for their determination which has seen this huge project completed.

They are now planning their next project—the restoration of the pinnacles at the east end of the church. They mirror those on the tower and when they are cleaned to reveal the lovely pale



honey-coloured stone we shall all be able to see at close quarters (without climbing the tower) the work of those medieval stonemasons. 

## Future Fundraising events

Fashion Show–19th April 2013

Tower Festival–8th June 2013

Concert by Cossington

Voices–30th November 2013

All events at St Mary's Church

Contact details: John and Beverly Burton

Tel: 01509 815525

CHIROPODY • PODIATRY • FOOT HEALTHCARE

Modern foot clinic tailoring  
foot health & cosmetic  
solutions for the entire family.



Julie Astill: MSSCh.MBChA.HPC Registered

Tel: 01509 41 44 55

26 High Street, Barrow Upon Soar



**Central Business Services**

Oak Business Centre, 79-93 Ratcliffe Road, Sileby, Loughborough LE12 7PU

Tel: 01509 816150 Fax 01509 416852

[www.centralbusiness.co.uk](http://www.centralbusiness.co.uk)

Business Advisers, Accountants - and much more

**No nonsense, affordable, business advice, accountancy and  
bookkeeping - on your doorstep.**

A fully comprehensive service for the Self-Employed, Partnerships, Ltd Companies, covering all aspects of accountancy - including Year End Accounts, PAYE, CIS, Company Formation etc



Our friendly, approachable, team offers a personalised service, suited to your individual needs - **whatever the size of your business**

**FREE INITIAL CONSULTATION** - [www.centralbusiness.co.uk](http://www.centralbusiness.co.uk) or call us on 01509 816150

Our FREE newsletter containing lots of interesting and informative information can be obtained from our website

# Sileby united charities

In Talk@Sileby a year ago there was an appeal for persons interested in being Trustees of the above Charity as some of the exiting Trustees felt that it was the right time for them to retire. As a result three people from the village came forward and they were duly co-opted as Trustees. These were Beverly Burton, Jean Grattan and Lionel Blower who subsequently joined the two remaining Trustees Jocelyn Harris and Kenneth Hetterley. The retiring Trustees were John Whittington, Gordon Ward and Alvin Mugglestone and grateful thanks are due to them for the years of service that they have contributed to the Charity

The last twelve months have given us the opportunity to understand the Sileby United Charities and a few of the details are given below.

All of the Charities were administered by the Vicar, Churchwardens and overseers of the poor in each parish until the time a Parish Council was formed under an Act of Parliament in 1894.

The earliest Charity in Sileby was that of William Lane who was born and bred in Sileby,

learning the trade of a tailor. He prospered and went to live in Grubb Street in Cripplegate in London where he became an important member of the London Merchant Guild of Tailors. William Lane died in 1639 and his funeral was held at St Giles Church in Cripplegate where he normally worshipped. In his will, he remembered his birthplace and bequeathed £100 to the Vicar and Churchwardens of St Mary's to buy land, the rents of which would provide £6 per annum to be given on the anniversary of his funeral and six months later, £1 to the Vicar and £1 each to the five 'most 'ancientest and decayed' men resident in the village'.

The Vicar at the time had a son who was a Curate at Barrow-on-Soar. He purchased 17 and a half acres of land off Cotes Road, Barrow for this purpose and also 2 acres 1 rood at Roecliffe in Charnwood Forest (this was sold in the 19th century to Mrs Perry Herrick). The rents from the Barrow land continues to provide the money for distribution in the Charity.

## **William Bent Charity (1645)**

The poor of Sileby have also a rent-charge of 5 shillings issuing out of a field, subject to a lease dated the 20th year of Charles I, for a term of 500 years. (The Paddock at Highbury).

## **Thomas Oswin or Ainsworth (1655)**

Thomas Oswin or Ainsworth left 10 shillings each to 4 of the poorest inhabitants, being a rent charge arising out of fields on two farms, consisting of 102 acres. (Peashill farm, Ratcliffe Road).

## **Robert Barnard (1679)**

Robert Barnard (nephew of William Lane) in 1679 left by Will, the sum of £6 per annum to be paid out of the watermill and holmes, to be paid half-yearly, 10 shillings to the Vicar, and 10 shillings each to five poor persons.

## John Newbold (1931)

John Arthur Newbold, who died in 1931, left the sum of £500 to be invested, the yearly income to be divided in equal portions between such twenty of the poorest and most deserving inhabitants of the parish.

## George Burton (1940)

In 1940 George Arland Burton left £1000 to be invested, and the yearly income of the Charity, to be applied by the Trustees for the benefit of the poor, necessitous of infirm persons residing in the Parish of Sileby.

TO COMPLY WITH the above bequests, the Trustees continue to receive sufficient funds from the rent of the land at Barrow upon Soar to pay the bequest of the William Lane Charity paying the Vicar and five 'ancient' men in January and July of each year.

For convenience of administration, application was made to the Charity Commissioners to amalgamate the smaller charities and these are now allocated annually to twenty of the oldest ladies resident in Sileby.

The Trustees are always willing to consider any nominations that should be included in the list of recipients, in which case please contact any of the Trustees.

2025



# A.G. & D. RICHARDS

## OPTOMETRISTS

A. G. Richards, B.Sc., M.C. Optom. & D. Richards, B.Sc., M.C. Optom.

22 KING STREET, SILEBY, LEICESTER, LE12 7NA

Tel: (01509) 812088

### EYE CARE for the WHOLE FAMILY

#### Glaucoma screening and advice on general eye care

Large range of frames from designer to budget

Full range of contact lenses – NHS patients welcome

Home visits available – Accessories and solutions

**We take time to provide you with the right eye care**

# Sileby Town Cricket Club

**W**ITH THE WELCOME light nights already upon us and the countdown to Easter well underway that means that the cricket season cannot be too far around the corner.

Just because there is no cricket being played this doesn't mean that the cricket club has gone to sleep until April, in fact far from it.

For those of you who wander down towards the Mill on a Sunday morning will have no doubt seen the hardy souls working away on a Sunday morning to start to prepare things for when the warmer weather (we hope to get some this season) arrives.

To add to the work being done during the winter the club also has the traditional curtain raiser to the season in the form of the NatWest sponsored Cricket Force weekend, which is a nationwide England Cricket Board (ECB) initiative to encourage clubs to re-vamp and upgrade their facilities with the aid of offers from ECB affiliate companies and the goodwill of local businesses and the community.

Cricket Force 2013 takes place during the weekend of 6 and 7 April – if you have some time spare over that weekend why not come along and lend a hand.

At Sileby Cricket Club we fully appreciate the kindness and generosity we receive from local people and businesses and from this we began a new initiative in 2012 that we will be continuing in 2013, which is to give something back to the

community. Last year this was in the form of a donation to a local worthwhile cause. We asked for suggestions in the pages of this magazine this time last year. We were asked to consider to help a young girl who lives in the village, Caitlin Wesson. Caitlin suffers from the neurological disorder Rett Syndrome. Rett Syndrome effects everything from mobility, speech, posture, breathing and feeding. We were delighted to aid Caitlin's cause by donating £250 which her family are going to put towards an essential special needs car chair. For more information regarding Rett Syndrome please visit [www.rettuk.org](http://www.rettuk.org)

We are now looking for a new worthy cause for 2013 – if anyone has any suggestions for a family member, a neighbour, a friend or any worthwhile cause within the Sileby area then please contact the club at [admin@silebytowncc.org.uk](mailto:admin@silebytowncc.org.uk) with some details where each cause will be considered and responded to by the committee. We look forward to hearing from you.

The on-field action begins on Saturday 27 April with the First XI facing Leicester Ivanhoe at Mill Lane in the Premier League while the Third XI are also at home on opening day when they host Cosby and the Seconds make it an Ivanhoe double as they travel to Leicester Forest East to play Ivanhoe's 2s. The big local derbies take place on 18 May when we travel to face old rivals Barrow & Burton, with the return match at Mill Lane on 3 August.

The cup draws have not been kind this season with away draws in the National Knock Out, at Peterborough Town on 28 April, County Cup, away at Stoughton & Thurnby on 19 May and the League Cup, away at Barwell on 9 June. The only home cup date so far is the T20 round robin on Monday 6 May when we host Kibworth and Ashby Hastings. The lads look forward to your support at home and on the road and we hope that you'll come and enjoy some summer sunshine at Mill Lane this season.

The Ladies XI will also be looking to improve on a second placed finish in the Women's Midland League this term as they face local opposition in the form of Ibstock Vixens and slightly less local opposition in the form of Gedling and Sherwood, Lincolnshire's Development XI and Kinoulton in Division 2 East. If you're interested in playing women's or girls cricket, please contact our Ladies captain Gill Loveridge on 07966 979370.

At the time of writing the Leicestershire junior fixtures had not yet been drawn, but we are again fielding junior sides at Kwik Cricket, Incrediball, Under 13, Under 15 and Under 17 levels this season. With a proven track record of developing home grown players there is no better place for local children to come and learn the game or improve their skills. If you are interested in joining one of the junior age groups

please contact Richard James on 07713 132650. Details of coaching nights will be available on the club website shortly.

The club would like to thank all of our sponsors for the 2013 season - your support of your club is greatly appreciated and we look forward to seeing you at Mill Lane during the season to enjoy the cricket. If you're interested in sponsoring the club this season, it's not too late - please contact Gill Loveridge on 07966 979370, who will be able to give you details of the sponsorship opportunities available.

Thanks again go to those who came to the fireworks display last November - we hope that you all enjoyed it and look forward to seeing you all back again in November. Ticket details will be released later on in the year - watch this space for details or log on to the club website at [silebytown.co.uk](http://silebytown.co.uk).

Thank you also to Costcutter and their customers who gave generously during our bag packing on the lead up to Christmas it has enabled the club to purchase a much needed new bowling machine for coaching and practice for all ages at the club.

Finally, we look forward to seeing you at Mill Lane during summer maybe to just pop in for a refreshing drink and catch a wicket or two you are all very welcome.

xxx  
xxx

<p><b>GLENN LEWIN BUTCHERS</b>  <b>SUPPLYING QUALITY LOCAL MEATS TO THE RETAIL &amp; CATERING TRADE</b></p>  <p><b>1 RATCLIFFE ROAD, SILEBY          LEICESTERSHIRE, LE12 7PU          TELEPHONE 01509 812246</b></p>	<p><b>All our fresh meats are sourced from local farm assured farms within 10 miles</b></p> <p><b>No GM products are used in animal feeds</b></p> <p><b>All produce is slaughtered locally</b></p> <p><b>All produce is prepared by ourselves on our HACCAP approved shop premises</b></p> <p><b>Beef is hung for 28 days to obtain it's finest eating qualities</b></p> <p><b>Traceable from the farm to the plate</b></p> <p><b>Committed to customer satisfaction</b></p>
--	--



# Heroes

JULY–SEPTEMBER 2014 WILL be 100 years since the 1st world war started and 75 years since the 2nd World War starter.

Well over 100 Sibley people were killed and a lot more injured. I have a few photo's of Dad's Army, Civil Defence and the National Fire Service but even less of enlisted men as shown here.

Some are already on computer (free). This could be the last chance to delve through some of your old photos and get your ancestors' faces recorded and rembered. If you have any photos, they can be copied and then returned.

You can contact me by email at [geoffreymrose@yahoo.co.uk](mailto:geoffreymrose@yahoo.co.uk).

✉

Geoff Rose



Thomas Blower  
RAF 264133



Harry Gordon Arnold  
Gnr Royal Artillery  
14683148



Authentic Bengladeshi  
Cuisine Natural Ingredients  
Cooked Fresh to Order

Take Away - Free Delivery

On all orders over £10.00 3 mile radius  
10% Discount on all orders over £10.00 collected  
Credit Cards Welcome

## Opening Hours

Sunday to Thursday –5.30pm to 11.30pm

Fridays & Saturdays—5.30pm to Midnight

\* Buffet night every Monday (except bank holidays) \*

\* Wednesday special 4 course set menu for £9.90 \*

\* Bring you own alcohol \*

37 High Street, Sibley. LE12 7RX

Tel: 01509 815050 [www.yasmins-tandori.co.uk](http://www.yasmins-tandori.co.uk)



# 'Syston Air Cadets take on the Challenge'

9 AIR CADETS and 1 staff member of 1181 (Syston) Squadron, Air Training Corps, recently took up the challenge to join with other air cadets from across the country to show their support to Comic Relief 2013. After hearing that BBC Blue Peter daredevil presenter, Helen Skelton, was looking for support in a challenge for Comic Relief involving the world renowned Red Arrows, the cadets leapt at the chance to be a part of what was to be a spectacular day!

The group of air cadets from Syston, arrived at RAF College Cranwell early on Tuesday 12th February and, along with 400 other air cadets, waited to hear what their challenge was to be. Whilst they waited, the 400 air cadets and their staff were treated to performances from 1084 (Market Harborough) Squadron band resulting in some sing along songs and then to make sure everybody was full of energy there was some dancing, group challenges and mexican waves!

After getting full of energy, the staff and air cadets were welcomed by Air Commodore Dawn McCafferty, Commandant Air Cadets. She praised all the air cadets and staff, thanking them for their enthusiasm and showing such great support to the project to support Comic Relief. The crew from the BBC explained that Helen was taking part in 7 different challenges to inspire people across the country to do something to help raise money for Comic Relief. Helen's challenge was to fly with the Red Arrows and give the order to 'Smoke on', the order that tells the Red Arrows pilots to turn on their smoke that helps provide their iconic displays. The air cadets were going to be on the ground to form the letters RND that would be filmed from the

air by the Red Arrows as they flew overhead.

After Helen had interviewed some of the young people, they all moved to outside College Hall Officers Mess at RAF College Cranwell to form the letters that would be filmed from the air. Despite the snow and very cold conditions outside, everybody cheered and displayed massive grins as they were treated to a display and flypast by the Red Arrows – with Helen flying in Red 1.

12 lucky cadets out of the 400 were selected to escort Helen into the aircraft and speak to her about their experiences as a part of the Air Cadet Organisation. Cadet Corporal George Sutton (aged 15), was one of the lucky 12. He said, "Another fantastic day! It was a great experience! Being chosen to represent 1181 in the guard of honour for Helen Skelton as she entered the tarmac to the aircraft was a huge privilege! Getting to meet the Red Arrows and represent the air cadets on TV was brilliant. Being involved in a video for Red Nose Day is rewarding in itself as it is helping many people, I would like to say a huge thank you to all the air cadet staff who give up their time for events like this and especially Pilot Officer McGlynn on behalf of all the squadron for organising our squadron so we could be involved!"

1181 Squadron meet on a Monday and Thursday from 19:00hrs to 21:30hrs and are based in the ATC hut in the grounds of Wreake Valley College. We are actively recruit new members and any interested parties should contact Flight Lieutenant Kenyon on [oc.1181@aircadets.org](mailto:oc.1181@aircadets.org)





## Its a knockout!

Formed in June 2009 by Andy Cogar, Dave Lambert, Stan Gough and Clive Handley—all volunteering their own time—and later joined by Stephen Scullion, Ben Daley and Leanne Kneveft, Sileby Boxing Academy's goal was simple. To give the local and surrounding communities a specialised fitness gym, promoting sports and well being whilst at the same time helping to reduce anti social behaviour.

**T**HEIR WORK IS fully supported by the local police, parish and borough Councils and local businesses. Recently, all the time and hard work everyone has put into the club led to the Sileby Boxing Academy winning the prestigious 2012 Leicester Mercury sports awards for the Best Community Club.

The gym itself is state-of-the-art with 2 boxing rings, numerous styles of punch bags and fitness equipment. They currently have over 100 members, including eight carded boxers with ten boxers ready to fight. Sileby Boxing Academy are out to regular shows with the boxers that are ready and matched at that time. For such a relatively young club their list of achievements to date is impressive:

- One boxer has reached the Midland Counties final for the past two years
- One boxer as the Three Counties Champion
- One senior boxer reached the Novice Championships semi-final

If you are interested in training for fitness, learning all aspects of boxing and becoming part of a great group, then come along. Sessions run from Monday to Thursday 6pm to 7:30pm. The club has a great mix of male and female members from a wide range of diverse backgrounds. Anyone is welcome from age 10 and up!

All the coaches and committee are CRB checked plus the coaches hold ABA coaching licences and first aid qualifications. The club is fully insured and registered with the Amateur Boxing Association and Leicestershire and Rutland sport club mark. They also have 3 child welfare officers

Sileby Boxing Academy aims to promote fitness, discipline, self esteem, self defence, healthy eating, a safe environment and being part of a group that means something.

For more information please call head coach Dave Lambert 07931 980915.

## Match report

Sileby Boxing Academy have a 14yr old schoolboy, Kenan Brown Wingfield, win the ABAE National Schools Champs Midland final at Retford in February.

He had a bye in the first round to become East Midland Champ, he fought A. Hafiz (Wolverhampton) in the class 3, 66-70 kgs final.

Kenan stuck to his game plan through out, working in with his jab and throwing fast straight punches, his opponent pressing forward, throwing wild hooks and trying to tie Kenan up.

All three rounds were very similar but Kenan pressured Hafiz, hitting the body and head with effect. Kenan won on a unanimous verdict, a well deserved win, which takes him into the quarter finals in Liverpool.



Kenan Brown Wingfield

# Zumba

with Nicole

## Thursday

Sileby WM Club, Concert Room  
10 - 11am

## Thursday

Cossington Jubilee Hall (behind school)  
7.30 - 8.30pm

## Sunday

Sileby Liberal WM Club, Concert Room  
6 - 7pm

**"Come and join the party"**

**Call or email to enquire**

**Nicole: 0788 245 8629**

[nicoleherbert@hotmail.co.uk](mailto:nicoleherbert@hotmail.co.uk)



## About Nicole

NICOLE IS A 21 year old local Sileby resident who attended Redlands school, Humphrey Perkins, Rawlins etc. She developed an interest in dance when attending Mrs Callis's dance classes and Sileby@Dance Saturday morning classes in the village run by Kathy Brown, where lots of fun was had performing in shows and raising money for many local charities.

Nicole went on to study dance at Melton College/Leicester College and is now studying a Foundation degree in Dance. Nicole has gained further qualifications: Safe and Effective Dance Practice and has become a Zumba instructor to fund her interest and to gain experience teaching dance/fitness.

She now runs three fun weekly Zumba classes at Sileby and Cossington.



## Sileby Vikings

AS WE APPROACH the vital final third of the season, I thought this would be an ideal time to update the good folks as to how their local rugby team is progressing.

For those that don't know, we are a local team set up 7 years ago from a group of inspired individuals at the Free Trade pub. In four very interesting years we have developed into a side that is starting to progress through the Leicestershire League. Last season we won Leicestershire League 4 and at the time of writing we are currently top of Leicestershire League 3, but this is an incredibly tight league and with five games left there is everything to play for.

We play at Platts Lane Sports Ground in Cossington and train on a Thursday evening from 7.00pm - 9.00pm. We welcome all players over the age of 17, no matter the ability level to our warm and friendly club, and hopefully show them why rugby is such a great sport.

As I said earlier we currently sit top of our division and currently we have won our last four league games, and with an ever improving squad we are looking forward to an exciting run in.

The club is certainly growing, and we have once this season managed to run two teams—this is something we are looking to do on a much more regular basis over the coming seasons, so come on down and join in.

With so many of players being local to Sileby we would love more people to come and support us. If you check out our website [www.silebyrfc.co.uk](http://www.silebyrfc.co.uk) and follow the link into our fixtures you can see our full home and away fixtures list. Come on you Vikings!





**4<sup>th</sup> & 5<sup>th</sup> May 2013**

**Melton Mowbray Country Park  
Visitor Centre. LE13 1HP**



# **Get Walking Weekend**

**A free day out for all the family.**

Come and find out about the benefits of walking in the countryside that is on your doorstep.

Join us for a walk from the park or come and talk to us about our **NEW** programme of led walks.

## **Walks on the day**

- 3 mile walks start at 10am, 1pm and 3pm
- 6 and 9 mile walks start at 10am

**Ample free parking for all**

For more details contact Martin on 07969 669230  
or see [www.meltonramblers.org.uk/getwalking.htm](http://www.meltonramblers.org.uk/getwalking.htm)

[www.ramblers.org.uk](http://www.ramblers.org.uk)

Registered charity, England and Wales no.1093577, Scotland no. SC039799

# **COSSINGTON SUMMER FETE**

*Be There!*

**SATURDAY JUNE 8TH  
12NOON—2.30PM  
ON THE SCHOOL FIELD**

**Cake Stall**



*Refreshments*

**Small Games**



*Bouncy Castle*

**Plants**

**Other Attractions**

Come and join us for a traditional village fete  
with stalls and activities for everyone

Space available for stalls—(Cost £10 and a suitable raffle prize)

Offers of help to [pfa@cossington.leics.sch](mailto:pfa@cossington.leics.sch) or  
telephone Rob Salt at school on 01509 812563

# Humphrey Perkins report found

I HAVE RECENTLY obtained some Humphrey Perkins Grammar School Reports for a John Brian Glover. They were sent to a Mr W.E.Glover of 21 Albion Rd, Sileby. There are fifteen Reports in all, and appear to cover his entire time at the School, from Christmas of 1940 until the Summer of 1945. They are all in good condition,. and in the original envelope

These may be of importance to someone researching their Family Tree. I am happy to pass these on to anyone proving a relationship to the above, and willing to pay my out-of-pocket expenses

On another matter...I left Sileby in 2011, and now live in Lincolnshire. We have a Village Magazine here, but it does not compare favourably with Talk@Sileby. So beware Sileby Residents that your Village Mag does not end up a thin copy with only Church Notices! Where are all the articles that could be included...come on the Heritage Group of Sileby, where are your interesting articles?

I can be contacted at [peterbcampbell@yahoo.co.uk](mailto:peterbcampbell@yahoo.co.uk)

Finally ..Best Wishes to all my Friends and Aquaintances in the Village.

xxx  
ova

Pete Campbell



## Great Summer Offer !

### Sileby Day Nursery

**15% discount off 1st invoice when you register a child by 21<sup>st</sup> December 2012.**

**"a safe and stimulating place to play and learn"**

Quality childcare from 6 weeks to school age  
FREE funded hours for 3 & 4 year olds  
Safe & secure environment with outdoor CCTV  
Fresh, daily prepared meals  
Special dietary requirements catered for  
All weather outdoor play area  
Car parking  
Full time & part time sessions available  
Open 7.30am to 6pm  
\*Music sessions by Music go Round

**To secure your child's place please contact nursery manager Tracey Brown on 01509 812300**

# CHRIS MEYNELL & FAMILY

## FUNERAL DIRECTORS

*Independent, Local Family Run Service*

*Over 15 Years Experience*

*Available 24/7 for Emergencies*

*Arranging in the Comfort of your Own Home*

*Traditional Hearse & Limousine*

*Horsedrawn Carriage, Motorcycle Hearse etc*

*Professional, Qualified Staff*

*Pre Paid Funeral Plans*

*Free Consultations*

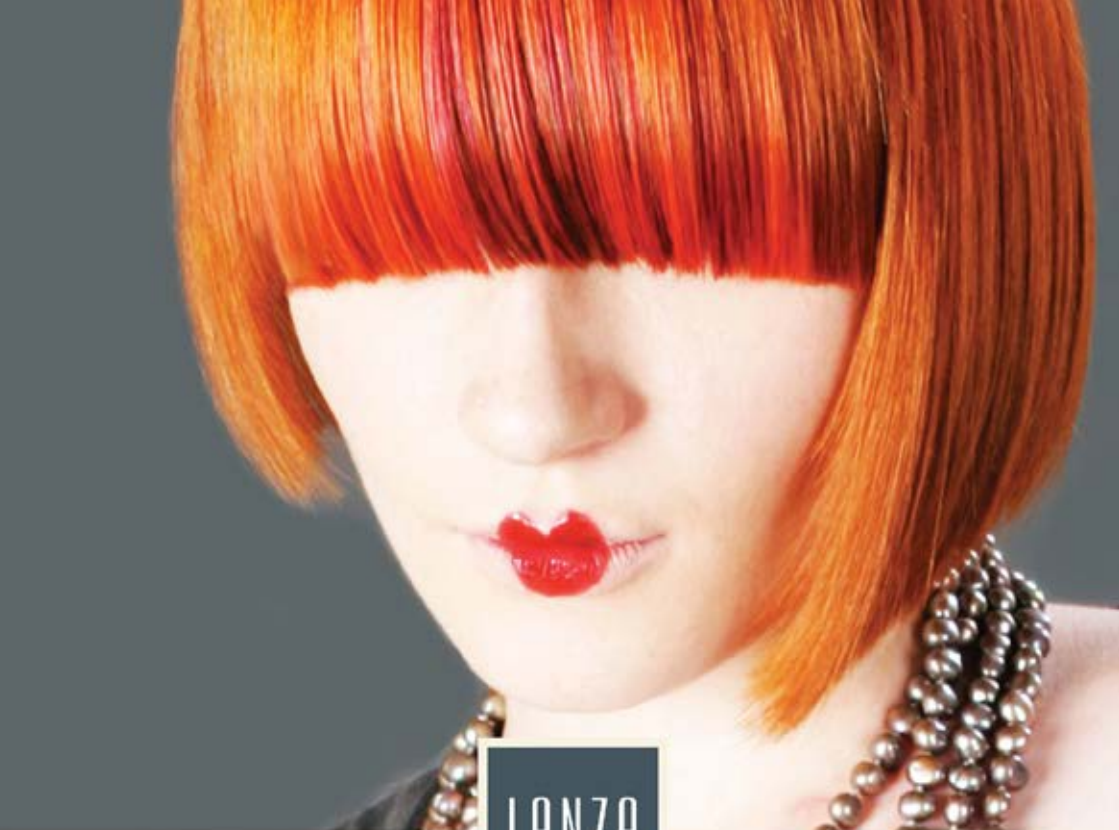
Tel: 0116 2607954

07712 158386

email: [info@meynellfunerals.co.uk](mailto:info@meynellfunerals.co.uk)

28 Wellington Street, Syston, Leicestershire LE7 2LG





LANZA

50% OFF

YOUR FIRST CUT & FINISH AT LANZA

Book now by calling **01509 812 968** and quote "*Talk@Sileby*"  
then simply present this advert at your appointment.

[www.lanzahair.co.uk](http://www.lanzahair.co.uk) Join us on  LanzaHairDesign

Lanza Hair Design | 57 The Banks | Sileby | Leicestershire | LE12 7RD  
For appointments call **01509 812 968**

\*Appointments subject to availability with selected stylists. Not to be used in conjunction with any other offer. Offer only for new clients of Lanza Hair Design on their first visit. Reference must be quoted on booking and advert presented at appointment.