

# Talk@Sileby

Village Newsletter

Your community magazine



**Sileby Community Library now open.**

page 14

43

Spring 2016

[www.sileby-village.co.uk/Talk@Sileby.htm](http://www.sileby-village.co.uk/Talk@Sileby.htm)

# KATHRYN DOWDING AT



*Full range of legal services provided including:*

- Wills and Probate
- Lasting Power of Attorney
- Divorce and Separation
- Buying and Selling Property

**Free Home visits available • Free Initial Advice • Fixed Costs**

**Call 01509 410388**

**Email: [kathryn@garrettlongsolicitors.co.uk](mailto:kathryn@garrettlongsolicitors.co.uk)**

**35-37 High Street, Barrow-upon-Soar,  
Leicestershire LE12 8PY**

I was pleased to be part of a meeting between Leicestershire MPs and Secretary of State for Communities and Local Government, Greg Clark, recently in which we made the case for further funding for Leicestershire County Council. Leicestershire has always been one of the worst funded authorities due to historic anomalies. Funding for the County Council is changing and by 2020 its funding will be raised and kept locally.

Greg Clark has agreed to give the County Council an extra £6.6million over the next two years to address some of their concerns. I believe this is good news for local residents and the right thing to do. I am also working on bringing in fairer funding for our schools too.

Many of you will be aware that a referendum on whether to stay in a reformed EU or for Britain to leave the EU will be held on Thursday 23rd June. This is a momentous step and a clear delivery of one of the commitments given in our manifesto last year. We have not had a vote on our membership of what was then the EEC for 41 years. I would urge everyone to take part because this is very important and relevant for the future of this country. Speaking personally, I believe Britain is stronger, safer and better off in a reformed EU and will be voting for us to remain – but every reader gets their own vote so we all have an equal say.

Before that we have a vote for a new Police & Crime Commissioner on Thursday 5<sup>th</sup> May. Our current Commissioner, Sir Clive Loader is not standing for re-election. Sir Clive has helped me to raise matters of concern to our local communities with the police – particularly around anti-social behaviour but also on individual cases. The Commissioner is also responsible for preparing a police and crime plan and for commissioning key services such as victim support and he set up the Leicestershire Youth Commission. This is an important role which although not always high profile has the ability to impact directly on our communities and I would encourage you to cast your vote.

I know that planning applications, parking and traffic continue to be real concerns to Sileby residents. I am waiting for the County Council to publish a report on Sileby's roads and this is something I discussed with the Chief Executive and Director of Highways recently. I have been contacted about parking around Moir Close and other areas.

Unfortunately the opportunities for action are limited but, again, I have taken this up with the County Council and I know your councillors have too.

# Contacts

<b>Editor:</b>	Dave Palmer, 60 Heathcote Drive, Sileby, d.r.palmer@talk21.com	07926039644
<b>Advertising:</b>	Lionel Blower landr25@btinternet.com	01509 816287
<b>Printed by:</b>	Norwood Press, Ellistown	01530 262020

If you would like to give your feedback, articles or letters these can be sent to the Editor

---

The advertising rates for Talk@Sileby are listed below

Quarter Page £30    Half Page £50    Full Page £80  
Inside front/inside back cover £105.00  
Back cover £135.00

**These prices are per issue.** 10% discount for booking and paying for three insertions in advance

**Next Issue will be Summer 2016. Copy and advert deadline is 30th June 2016.**

---

**Disclaimer:** The views expressed in this magazine are the views of the contributors and not necessarily the views of Talk@Sileby.

## Talk@Sileby

<b>Magazine Co-Ordinator:</b>	Ken Jones
<b>Editor:</b>	Dave Palmer
<b>Secretary:</b>	Pat Haswell
<b>Treasurer:</b>	Lionel Blower
<b>Societies Co-Ordinator:</b>	Robert Butler
<b>Contributer:</b>	Lynne Root

Your community magazine is delivered to every home and business in Sileby, that's about 3800 addresses!

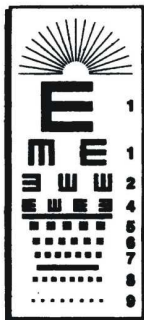
It is published 3 times a year: Spring around Easter time, in the summer and in November just prior to the Christmas lights "Switch on".

We have no political or commercial or religious allegiances and aim to be impartial and independent. We are entirely self funding through advertising revenue. We are here solely to promote Sileby, its businesses, residents, clubs, societies, associations, schools and churches. All items and pictures are copyright Talk@Sileby unless otherwise stated.

Front Cover Picture: Sileby Community Library.

Talk @ Sileby, By Sileby people. For Sileby people





# A.G. & D. RICHARDS

## OPTOMETRISTS

A. G. Richards, B.Sc., M.C. Optom. & D. Richards, B.Sc., M.C. Optom.

22 KING STREET, SILEBY, LEICESTER, LE12 7NA

Tel: (01509) 812088

### EYE CARE for the WHOLE FAMILY

#### **Glaucoma screening and advice on general eye care**

Large range of frames from designer to budget

Full range of contact lenses – NHS patients welcome

Home visits available – Accessories and solutions

**We take time to provide you with the right eye care**



# SUNRISE *eggs*

### **Sponsors of Sileby Town Cricket Club**

Sunrise Poultry Farms Ltd.

Seagrave Road, Sileby,  
Leicestershire LE12 7NJ

Tel: 01509 812441

Fax: 01509 814601

email: [info@sunrise-eggs.com](mailto:info@sunrise-eggs.com)

web: [www.sunrise-eggs.com](http://www.sunrise-eggs.com)



## COUNTY COUNCIL NEWS

The early months of the year are when councils finalise their Council Tax proposals for the period of April onwards.

After some years of no or low increases the picture has now changed, with many councils raising their Tax. As you will see from your Council Tax bill, the County Council is increasing its share of the Tax by 3.99%. The Council also has to make savings of £26.7 million next year, and proposes to save £78.3 million over the next four years, of which £19.5 million still has to be identified.

The 3.99% includes the extra 2% allowed by the Government without the need for a referendum, to pay for adult social care. However, the extra money will not meet the Council's full costs for adult social care.

The Deputy Leader of the County Council, Councillor Byron Rhodes, has said: "We have got to get on and save £78 million, on top of the £130 million we have saved since 2010 – and it won't be easy. I welcome the Government's announcement of a funding review and our finance team is working up proposals for a new system to put before ministers...It cannot be right that other counties receive millions more than Leicestershire each year."

The Government is making £3.3 million of transitional funding available to the Council for each of the next two years. This will not affect the Council's overall savings targets but will be used for a number of specific items, including critical resurfacing and strengthening schemes for highway maintenance, and responding to additional demand and cost pressures for special educational needs transport.

## SILEBY CEMETERY

Sileby Parish Council will be holding a 'Drop-In Session' at the cemetery chapel on Saturday, 23 April between 10.00 am — 12 noon; this is an opportunity for you to come along and talk to councillors about any concerns/ issues you may have.

It is not widely known that the chapel is available to hire, so do come along on 23<sup>rd</sup> April as this will give you the opportunity to view the chapel. Housed in the historical chapel buildings the chapel provides an intimate, comforting and traditional setting; befitting the reverence of the occasion, situated with a commanding view of the Soar Valley and Charnwood Forest.

You will notice that we have had a new road laid in the cemetery and we are in the process of replacing the roof on the building, in the Garden of Remembrance.



## Sileby Neighbourhood Watch

Sileby Neighbourhood Watch is a group of local residents who meet at Sileby Community Centre on the High Street on the third Tuesday of each month.

The purpose of our meetings is to discuss crime in the area of Sileby, and the exchange of information between the Sileby NHW members and our supporting local Police Officers. We also look at practical ways we can make ourselves and our homes safer and more secure, and how we can share the benefits of the Neighbourhood watch scheme with the rest of our community.

Needless to say, the more members an organisation like the Neighbourhood Watch attracts, the greater our ability to pursue initiatives which can help every resident of Sileby reduce the chances of becoming a victim of crime.

If you have ever been a victim of crime, have family members who have been victims, or have concerns about crime within our village, then why not drop down to the next Sileby Neighbourhood Watch Meeting and find out what it's all about? You can contribute to making Sileby village a safer and more pleasant place to live while helping to build a stronger local community.

Look out for information about Sileby NHW online:



**Sileby Community Page & Sileby Neighbourhood Watch**

If you have any questions, you can email us at: [silebynhw@gmail.com](mailto:silebynhw@gmail.com)

Stay informed of policing news in your area & sign up to  
[www.neighbourhoodlink.co.uk](http://www.neighbourhoodlink.co.uk)

**REMEMBER:** Third Tuesday of every month, **7pm at Sileby Community Centre**. All are welcome, so please drop in and see us.

# “Your Village Needs You!”

# TURN TO US FOR HELP AND SUPPORT

In your time of need we'll take care of all  
the funeral arrangements.  
Call us 24 hours a day.

- Funeral Pre - Payment Plans
- Memorials

## **H TOWELL FUNERAL SERVICE**

97 Swan Street  
Sileby LE12 7NN

**01509 814404**

5 Danvers Road  
Mountsorrell LE12 7JG

**0116 230 2449**



Part of Dignity plc. A British Company.



## **HAVE YOU MADE YOUR WILL YET?**

Or is your old Will out of date?

**MAKE SURE YOUR ASSETS GO TO THOSE YOU LOVE.**

For Wills - Trusts -  
Estate Planning & Lasting Power of Attorney

We come to you! For an appointment or a brochure telephone  
**Mrs Chris Thomas, Mrs Clare Cooper or Wayne Cooper**

**01509 507334 (Home)**  
**08450 568571 (Office)**

*Just Wills & Legal Services*

90 The Meadows, Shepshed, LE12 9QN  
Member of The Society of Will Writers

## *Top Ten result for Sileby surgery!*

Sileby continues to lead with excellent and innovative medical care, after The Banks Surgery made it to the finalist stages of the national GP awards 2015. This is the second year in a row that the practice has reached the top 10 out of about 500 entries in their respective categories. This year the category was "Clinical team of the Year – Long term conditions". Nominations are put forward for projects that have been run in the preceding year that have been shown to make a significant difference to the quality of care being provided. The Banks Surgery put forward an innovative computer system that is used to organise and check the blood results for all patients on a specific type of drug that can cause damage to other organs if not monitored closely. This has eased the process of checking results, ensured the safety of prescribing the drugs and simplified the process for patients. The awards ceremony takes place in London each year with around 300 finalists from all over the UK. So far we have achieved two finalist results – Let's hope third time's lucky for the win!!

## *Highgate Medical Centre P.P.G. Health Walks*

These walks will begin again on Wednesday 11th May at 2.30pm, meeting at Sileby Community Centre on the High Street. The walks are no longer than a mile and a half and do not go over any stiles. The walks proved very popular last year as people discovered places in Sileby that they didn't know about. We also "had a go" on the new fitness equipment, and went to see the new railway bridge and a "trip" round the Peace Garden.

There is no cost to come on the walks which are led by either Matt Richardson from Charnwood Borough Council or Christine and Dave from the P.P.G. committee.

Give them a try this year and enjoy a social afternoon, with a cup of tea at the finish, as well as a trip around your village.

**GLENN LEWIN  
BUTCHERS**  
SUPPLYING QUALITY  
LOCAL MEATS  
TO THE RETAIL &  
CATERING TRADE



**1 RATCLIFFE ROAD, SILEBY  
LEICESTERSHIRE, LE 12 7PU  
TELEPHONE 01509 812246**

All our fresh meats are sourced  
from local farm assured farms  
within 10 miles

No GM products are  
used in animal feeds

All produce is  
slaughtered locally

All produce is prepared by  
ourselves on our HACCAP  
approved shop premises

Beef is hung for 28 days to obtain  
it's finest eating qualities

Traceable from the  
farm to the plate

Committed to  
customer satisfaction



## *Short Health Walks around Sileby by Highgate Surgery P.P.G. 2016*

All walks begin at Sileby Community Centre in High Street at 2.30pm

**Wed 11th May** - High Street, Barrow Road, New Railway Bridge then either a) over the railway bridge and right along King Street or b) down to the Peace Garden and return along Barrow Road to meet a) walkers at St Marys Church. 0.7 miles.

**Wed 8th June** - Catch the no. 2 bus to Cossington and walk back along Cossington Road to the Green Place. 1.25miles

**Wed 13th July** - High Street, Brook Street, Duck Paddle to Ratcliffe Road, Highgate Road onto Sileby Memorial Park, through to Swan Street and upper Hobbs Wick to Burton Walk, King Street to St Marys Church. 1mile.

**Wed 10th August** - Cross High Street to follow the footpath sign over two fields to Mill Lane and on to Sileby Mill. Return by Mill Lane, Mountsorrel Lane and High Street. 1.25miles.

**Wed 14th September** - Along Cossington Road to Charles Street and either a) follow footpath sign to Sherrard Drive and Wallace Drive or b) turn right at the top of Charles Street to Sherrard Drive and Wallace Drive, the down Quaker Road to return by Cossington Road to The Green Place. 1.5 miles

**Wed. 12th October** - Catch the number 2 bus to Highgate School on Heathcote Drive and walk along the footpath to Sileby Memorial Park to the Exercise Equipment. Then onto Seagrave Road, cross Swan Street to King Street to finish at St Marys Church. 1.5 miles



# **B. YATES & SON**

## **Plumbing, Heating & Gas Services**

## **Bathrooms & Showers**

## **Gas Safe Registered**

## **Mobile: 078088 30697**



# WORKPLACE PENSIONS – ARE SILEBY BUSINESSES READY?

There are estimated to be about 400 businesses in Sileby, many with employees. Some may only have one employee while others could have quite a few. The introduction of Workplace Pensions, also known as Auto Enrolment, will come as a shock, particularly to smaller employers with only one or two staff. Employers will need to learn about Workplace Pensions very quickly to ensure they keep on the right side of the law. It will also be useful for workers to know what to expect and what they are entitled to and what notices they are likely to receive. The time for small and micro businesses to be compliant with the legislation has arrived. Believe it or not automatic enrolment is now three years old! The compulsory pension's legislation aim is to encourage employees to start making provision for their retirement with employers and Government also contributing to make a larger pension pot.

According to a leading pension provider a growing number of UK businesses are leaving it to the very last minute to comply with their auto-enrolment obligations. Is this you?

It is essential to highlight that the auto enrolment scheme cannot be ignored. Even if your employees opt out of the scheme you still have administrative duties to ensure you remain compliant.

The Pensions Regulator states: "Where employers fail to comply with a compliance notice or there is evidence of a breach, we can issue a prohibited recruitment conduct penalty notice. This penalty has a prescribed rate of £1,000 to £5,000 depending on the number of staff the employer has. We aim to fully recover all the penalties that we issue."

So, although the administrative costs associated with setting up and running a compliant scheme are likely to be unwelcomed by most small businesses, ensuring you are compliant by your staging date is going to be much more cost effective in the long run.

Being prepared for Workplace Pensions need not be too difficult, provided you start planning in advance. Allowing reasonable time to consider and make the required decisions will pay dividends when it comes to implementing the pension.

Even if you don't need to put a Workplace Pension in place, and there are a (very) few exceptions, it is a requirement that you notify the Pensions Regulator. Failure to do so can also result in penalties.

The friendly and dedicated team at Central Business Services (CBS) [www.centralbusiness.co.uk](http://www.centralbusiness.co.uk) Sileby, are working hard to come up with solutions that ensure you aren't spending more than is absolutely necessary.

Emma Black of CBS says: "We may or may not already handle your Payroll; either way our team can help take the headache out of Auto Enrolment for you. The packages we offer are completely bespoke to your business, your number of employees and current Payroll set up, so meeting for a no obligation, face to face discussion is essential in the first instance."

Want more information? Central Business Services are planning to hold some Workshops covering the basics of Workplace Pensions for small employers at their offices in the Oak Business Centre on Ratcliffe Road, Sileby. If you are interested in attending you will find more information on their website [www.centralbusiness.co.uk/automatic-enrolment/](http://www.centralbusiness.co.uk/automatic-enrolment/) or call on 01509 816150.

Workers in small businesses could (and probably should) ask when the "Staging Date" is and how contribution levels are to be calculated. You don't want to miss out on what could be a valuable contribution to your retirement income.

Emma Black



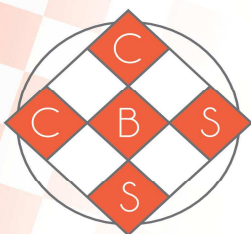
Why not come and join us and enjoy exploring the local parish footpaths and countryside? A chance to meet with new people and healthy exercise. Everyone welcome.

**All walks start at Sileby Community Centre at 7.00p.m. led by John & Beverly Burton and Dave Thompson.**

- Tuesday 26th April** Cossington Road, Cossington Meadows, Platts Lane, Blackberry Lane, Ratcliffe, College, Ratcliffe Road, 3 1/2 miles
- Tuesday 17<sup>th</sup> May** Memorial Park, Seagrave, Big Lane, Quorn Park, Quorn Park, British Gypsum, Barrow Road, 5 1/2 miles
- Tuesday 21<sup>st</sup> June** Ratcliffe Road, Ratcliffe College, Ratcliffe Barn, Rearsby Mill, Ratcliffe on the Wreake, Ratcliffe Road, 5 1/2 miles
- Tuesday 16th July** Barrow Road, River Soar, Sileby Mill. River Soar, River Soar, Cossington Meadows, Cossington Road, 4 1/2 miles
- Tuesday 16th August** Sileby Mill, Mountsorrel Hills, Mountsorrel Lock, River Soar, Barrow Road, 4 1/2 miles

All persons taking part in these walks must understand that they do so at their own risk.

If you enjoy walking and would like to walk more often, the Loughborough & District CHA Rambling Club has a weekly programme of local walks and occasional bus rambles. If you would like more information please ask John or Beverly for a current programme of walks.



Central  
Business  
Services

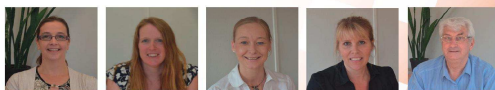
FREE INITIAL CONSULTATION

*Accountancy, bookkeeping and  
affordable business advice  
- on your doorstep*

A fully comprehensive service for the Self-Employed, Partnerships and Ltd companies, covering all aspects of Accounts, PAYE, CIS, Tax Returns, Company Formation etc...

Oak Business Centre, 79-93 Ratcliffe Road,  
Sileby, Loughborough LE12 7PU

Our friendly, approachable, team provides a personalised service, suited to your individual needs.



[www.centralbusiness.co.uk](http://www.centralbusiness.co.uk)

Tel: 01509 816150

Fax: 01509 416852

The photograph of Redlands School on the front cover of the Winter issue of Talk@Sileby generated much interest and discussion, both with older villagers and those new to the village.

Growing up in the late 1950's early 1960's, Redlands, was known as Sileby County Primary School, however when it was first built in 1800's it was called Sileby Senior School.

For many of my generation our first school was the Infant School on Barrow Road, situated next to the Nat West Bank. The Headmistress was Miss Cross. Mrs Hearn and Miss Edmands (now Mrs Owen who has regular contact with Sileby) were two of the teachers. Popsy Gilbert was a dinner lady, always ready to wipe away any first day tears. At the age of five, no pre-school then, it was a big step to take.

Everyday you would have a small bottle of milk at breaktime, and in the winter the blue tits would have pecked the tops off whilst in the crate. Mrs Wakeling was the caretaker and kept the fires stoked up when it was cold. The building when sold became the Old School Restaurant, which was run by Jackie Baum, with the family helping. Many will remember Jeff Baum the driving instructor, another Sileby character.

From the age of seven, you then went to the Primary School. The house groups were Wycliffe, Latimer, Beaumont, Macauley, the girls summer dresses being gingham colours of red, blue, yellow and green, depending on which group you were in. The Headmaster was Mr Harrington, two teachers who come to mind are Mr Turnbull and Mr Hayes. The Methodist Hall was used for school dinners, and some PE lessons. Sports day was always a good event, with competition between the groups being contended, and some of the pupils played sport for the county, netball being a favourite for the girls. We had music lessons from Eric Pinkett, his daughter was another teacher.

The eleven plus examination was taken in those days, and if you passed that some of the girls went to Rawlins at Quorn, which was a girls school, whilst some of the boys went to Loughborough College, generally most pupils went to Humphrey Perkins School at Barrow.

I'm uncertain of the year when the Infant School closed, and Highgate School was built but a guess would be the early 1970's. If you have any school memories, recollections, photographs especially, or if you are able to add or clarify details in this article do get in touch with Talk@Sileby. Lynne Root

# BOYS II MEN

## TOP QUALITY EXPERIENCED HAIRSTYLISTS

**Friendly Atmosphere and all cuts at  
Reasonable Prices**

12b High Street, Sileby  
LE12 7RX  
☎(01509) 812357

# OPEN FOR BUSINESS

We have been keeping you up to date during 2015 with the progress of the transfer of Sileby Library from Leicestershire County Council to Sileby's Community.

The day finally came on Monday, 14<sup>th</sup> December 2015 when Sileby Library opened its doors as a Community Managed Library. The keys were handed over by Nigel Thomas, Head of Libraries at Leicestershire County Council to Sarah Freeman, Chair of the Sileby Community Library's Management Committee.



Since the doors opened, our great volunteers have been getting to grips with the library's computers, systems and how things are run.

The opening hours have been increased to give you more opportunity to borrow a book, use the computers or free wifi with your library card, look at the on line e-books or magazines, attend our events or just come in to read the local newspaper.

## The opening hours are currently:

Monday	10.00 to 1.00—2.00 to 5.00
Tuesday	Closed
Wednesday	10.00 to 1.00
Thursday	4.00 to 8.00
Friday	10.00 to 1.00—2.00 to 7.00
Saturday	10.00 to 1.00
Sunday	Closed





We are open late on Thursday from 4.00 to 8.00 if you work full time, are busy during the day or just want some quiet time.

The Library's Management Committee are planning to develop the library in the future to improve the facilities including refurbishment of the children's area, upgrading the IT and Wi-Fi, and more seating.

We also want to encourage more use of the library e.g. there are drop in sessions from the Local Community Police arranged. The next dates are: Wednesday, 23<sup>rd</sup> March 2016 at 12 noon Sileby Library Monday, 25<sup>th</sup> April 2016 at 11.00 a.m. Look out for more dates.

We would not be able to progress our plans without our fantastic volunteers and you in the village. Please continue to support your local library. Any ideas, suggestions or feedback are always welcome. If you would like to volunteer or would like to help, in particular, to fund raise, hold your club meetings, run an interest group in the library, please contact us at [info@silebylibrary.org](mailto:info@silebylibrary.org) or find us on Facebook or Twitter.

Find us on Facebook — Sileby Community Library or look at our website  
[www.silebylibrary.org](http://www.silebylibrary.org)  
Email: [info@silebylibrary.org](mailto:info@silebylibrary.org)



### Letter to the Editor...

Dear Sir,  
I would just like to write and comment on the New Community Library in Sileby. It has never looked so bright and welcoming as it does now. The Harry Potter days looked brilliant (even though I didn't take part, being an O.A.P. and a bit out of date). I would also like to say Thank You to Sarah and all the Volunteers for their wonderful work.  
Best Regards,  
Mrs C. Thompson



**Sileby Community Library**  
managed by volunteers

**Library service - free to join**  
**Free internet and Wi-Fi**  
**Local information and book loans**  
**Everyone welcome**  
[www.silebylibrary.org](http://www.silebylibrary.org)

Supported by  
 **Leicestershire County Council**

## *SILEBY – THE VILLAGE*

With apologies for any errors – I get forgetful nowadays

When I was young the village was very prosperous, in fact, so I was told, it was the village with the most industry in the country, I don't know about that, but there was loads of factories and small shops everywhere. I remember most of the names;

Shoe Manufacturers – Newbold & Burton (villages biggest employer), Lawson Ward, Excels, Simonds, Swan & Preston, Willets and Moirs.

Hosiery Manufacturers – Towles (another big employer), Drivers, 3 small firms (2 in Swan St and 1 in King St)

Melody Mills (wallpaper), King St – printers, The Banks – label makers, Brays – Cemetery Rd – aeroplane dismantlers -scrap, Sileby Brickyard – Cemetery Rd, The Maltings Brewery-High St, Sileby Dairy – Swan St, Tannery – Sileby Mil, Saunders Engineering – Swan St

There were many more small places, but memory fails me (I should have asked my Mum, her memory was as sharp as a razor). Shops too numerous to mention, the only thing resembling a super-store was the Co -Op on the corner of King Street and Swan Street. All the shops made a good living because of the industry, so many people from the surrounding villages came to Sileby to work. Because of the numbers of people there was of course plenty of pubs. The Red Lion was demolished many years ago, the Plough closed, the Fountain and the Railway are now flats. We also had a dance hall (the Unity) in Swan Street that was extremely popular in those days, also in Swan St was the picture house, The Futurist (or Berts bug house). We would queue for ages to get in. The picture houses were packed out in those days. It used to be three pence (old money) at the front, or sixpence at the back and upstairs. There were a few double seats at the back, they were for the older ones for kissing and canoodling, I graduated to them eventually. Always an A- film and a B-film, with the never ending weekly serial. You could always tell what was showing with the excited children rushing out shooting red Indians or Germans or screaming like Tarzan. There was a wall between the Swan pub and the pictures, about seven feet high. Our Swan St gang used to sit there for hours talking about the war and the future and what we would all be doing one day. Alas the picture house is now the local chemists. All the main banks were represented in the village back then.

I remember when there were two football teams, the Ambulance and I feel sure a team that had some connection to Newbold & Burtons (certainly pre the present Sileby Town). The Ambulance played on the recreation ground. I played for N&B and we had a pitch off Seagrave Rd and had to carry all the kit, goal posts etc all the way from our dressing room at the Red Lion. Eventually the Ambulance folded and we moved to the recreation ground and changed at the Swan in Swan St. In my time the cricket field has always been off Mountsorrel Lane, I played there for many years. There was also the snooker hall at the Institute (now demolished), near to the Free Trade Inn, off Cossington Road. Of course



the football facilities have changed immensely since then, but the ground is in the same place but I believe that'll move soon to a new facility. Alas all the places named above have long since gone. Factories pulled down and houses and flats built, banks all gone, shops shut or altered, dance hall and picture house no longer there. A few small industrial estates have sprung up but they employ very few compared to my young days. One thing that really stands out was the lack of traffic when I was a boy. We used to play football and cricket in the street, no parked cars and no vehicles driving about. The only time the game would halt is when a horse and cart or a herd of animals came down the street. One of our favourite games was marbles and we would play for hours in the gutters up and down the street. During the summer the street residents would be sitting out in the evening on the walls or the house steps "gossiping" about the war or the state of everyone and everything. The same people lived in the street for many years, houses were never sold, everyone knew everyone, we were almost like a tribe. Doors were never locked, neighbours would suddenly appear with requests to borrow something or ask for help, or just for a chin wag. I can remember the horse and cart coming round daily with old Mr Wells and he would be selling all sorts of produce, vegetables local fruit, pots and pans. We would hang on the back of the cart, with our feet on the axle to hitch a ride. The local street cleaner was Harry Gretton and he would be around the village every day with horse and cart sweeping and brushing, there was never any rubbish lying about in those days. The local farmer Tommy "titleg" Newbold (he had a club foot), his farm was next to the church, he would deliver fresh milk from the churns on his cart.

The churches were the centre of village life, we children had to attend Sunday school. There were five churches, St Mary's (the big one), Catholic, Wesleyan, Baptist and Methodist. I attended the Methodist's, it was convenient being about fifty yards from our front door. Sunday was when we put on our best clothes and went to church. Every year there was the Anniversary service and we all got a brand new set of clothes for that day. I can remember quite clearly, sitting on the purpose built scaffold at the front of the congregation along with dozens of others, singing, we even had to attend rehearsals for this, everything had to be right. Considering my Mum was so religious, I never did get christened. There was also the railway station in King Street, it has been reopened in recent years, but the present one bears no resemblance to the grand station we used to have. There was the ticket office in what is now the local car park, two lovely big waiting rooms on each platform. The station had beautiful gas lamps and there was always lots of super posters with seaside destinations (mostly Skegness). During the war I remember posters telling everyone to keep quiet because of spies etc. Employees of the rail company LMS, were always in attendance with their smart uniforms, they ran a very disciplined "ship" in those days.

There was a number of working farms actually located within the village and every day, sheep, and cattle would be driven through the village, it was a good source of fertiliser for the gardens. There was an area of waste land at the bottom of our street near the brook, a lovely place to play and have our giant November 5 bonfire. The brook that ran through the heart of the village was a source of adventure and wonderment to us.

We would catch sticklebacks and stone loach by the dozen. In spring it was a place for literally thousands of toads and frogs to spawn. Sometimes in the deeper water at the bottom of the recreation ground you could see roach and even eels. Farther up the fields it was a paradise for wild life, kingfisher, heron, ducks etc. When the brook was in flood and it used to have mighty floods that cut the village off completely, we would go dragging. This consisted of making a hook out of wire or metal, attaching to some strong rope and casting out into the raging torrent, from one of the many bridges, to see what could be "caught". We would drag out logs, bushes old bikes, tins, tubs, all manner of rubbish, it was good simple fun then. Our favourite bridge was a small one off the Hobbswick, behind Polly Warings shop, it's still there.

We would sometimes climb through the fence around the Aircraft Salvage yard on Cemetery Road (Brays), and take large sections of aluminium off the scrap planes, (tail and wing sections were the best), we would then go up to the brickyard pit which had a maze of water channels, slide down the steep pit sides and across the water, great fun. The area of the old pit would never have been allowed to be filled in nowadays, as it was home to Great Crested Newts, lots of grass snakes, and the clay sides of the pit was home to dozens of Sand Martins and their nests, the water also held many Carp, some of considerable size, free fishing for us.

Perhaps I've written enough for this issue, but if I can focus my mind to those days in the forties and fifties, and the editor is agreeable, another chapter may be of interest to some of you, especially those of you who were part of my life.

Barry (Sam) Smith

### *Sileby St. Mary's Ladies Fellowship*

The Group meet on a Tuesday afternoon at 2.30pm in the St Mary's Centre on Mountsorrel Lane. The ladies welcome anyone of any faith or no faith to their meetings, which have a speaker or a slide show or just a chat with occasional outings. There is always a cup of tea at about 3.30pm and sometimes cake. The speakers are sometimes from a charity when a donation is made by the Group. A contribution of £1.50 each person is suggested. We look forward to seeing you at our meetings.



# CHRIS MEYNELL & FAMILY

## FUNERAL DIRECTORS

*Independent, Local Family Run Service*

*Over 15 Years Experience*

*Available 24/7 for Emergencies*

*Arranging in the Comfort of your Own Home*

*Traditional Hearse & Limousine*

*Horsedrawn Carriage, Motorcycle Hearse etc*

*Professional, Qualified Staff*

*Funerals from £965 plus Disbursements*

*Pre Paid Funeral Plans*

*Free Consultations*

**Tel: 0116 260 7954**

**email: [info@meynellfunerals.co.uk](mailto:info@meynellfunerals.co.uk)**

**28 Wellington Street, Syston, Leicestershire LE7 2LG**



## Charnwood Hearing Aid Centre

Lynne Leeming, MSc RHAD BSHAA

Your local Widex specialist

Existing hearing aid users welcome

5 Staddon Road

Anstey

Leicester

LE7 7AY

Telephone: 0116 236 6633

Free parking in the Nook car park



# R H Plastering and Building

Local plasterer, over 20 years in trade

All aspects of plastering, rendering, damp-proofing, coving and building

Private, commercial and insurance work undertaken

Contact Richard Herbert  
for a free quote and  
advice.



**162 Ratcliffe Road  
Sileby**

**Leicestershire  
LE12 7QA**

**Tel: 01509 812190**

**Mobile: 0794 1170 230**

## Explore the Beautiful River Soar



Family day trips from Sileby Mill where you can explore the beautiful River Soar in either direction. Head south and you will pass Watermead Country Park through some delightful countryside. Birstall makes a good lunchtime destination with a large riverside pub, or you can press on a bit further towards Leicester. Head north and you will meander through lush water meadows, past the villages of Mountsorrel and Barrow.

Our purpose built, all weather narrowboats Rumble, Fumble and Jumble are ideal for a family outing, birthday, anniversary or reunion parties, or a business day out with a difference. Why not join the growing number of local and national companies who have found our day boats perfect for team development days.

**Find us at: Mill Lane, Sileby, Loughborough LE12 7UX**  
**Call Kate or Sandra at 01509 813583**  
**Email: [silebymill@tiscali.co.uk](mailto:silebymill@tiscali.co.uk) | [www.silebymill.com](http://www.silebymill.com)**

## SMARTLY STITCH TAILORS

**CLOTHING ALTERATIONS & REPAIRS**

**Professional Alterations and Repair Work**  
Trousers, Jackets, Coats, Skirts, Dresses and Many Other  
Garments, New Zips Fitted

**Made to Measure Curtains**  
Alterations also undertaken

**Leather Garments Bags Repaired**  
Altered and Repaired And zips fitted

**PROFESSIONAL  
DRY CLEANING AGENTS**

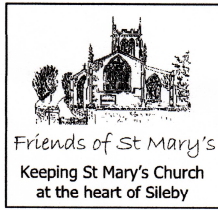
**Motorbike, Equestrian & Leather Clothing**  
Repaired and altered

**SMARTLY STITCH**

## TAILORS

1a Little Church Lane (Next to St Mary's Church)  
High Street, Sileby LE12 7NE  
[www.smartlystitch.co.uk](http://www.smartlystitch.co.uk)

**TEL: 01509 815658**



**Friends of St. Mary's** are delighted to announce a varied and interesting programme of events for 2016.

### **Spring Programme**

- Ladies Fashion Show, Friday 15th April, 7.30pm
- Tower Tours and traditional village fete, Saturday 11th June, 10.00 - 2.00pm

### **Autumn Programme** (some details still to be finalised)

- Concert by the highly acclaimed and stunning vocal group Mosaic
- Quiz night
- Coffee morning, Saturday 12th November, 10.00 - 12.00pm

Whether you are a regular church goer or not St. Mary's is the church for the whole village and beyond. You may only come at Christmas, or for a wedding or funeral or even just use the building to give directions. Whatever your connection, your support is really important to maintain this beautiful, historical building.

Events are either free to enter (only paying for things you want) or generally cost between £5 - £10 for a ticket.

If you are interested in any of the events, or would like to become a Friend of St. Mary's please call John Burton (01509 815525) or Iris Stevens (01509 813986)

Please do try and help us in our efforts to maintain of Sileby's most recognisable and iconic landmark.



Friends of St Marys church Sileby Leicestershire



# SILEBY TENNIS CLUB

## SILEBY TENNIS CLUB NEEDS YOU

Sileby Tennis Club this year are having their first OPEN DAY on  
SUNDAY 3rd APRIL 11AM - 4PM

There will be Special Discounts for all NEW Members joining on the day  
The second OPEN DAY will be on SUNDAY 26th JUNE 11AM - 4PM. There will be Strawberries and cream and cakes on offer (for a small price of £2.50 each). Everyone is welcome to play tennis on these two Open Days for FREE.

The Club was formed in 1927 with three shale courts. They now have four All Weather courts with a small "clubhouse". During the Spring and Summer the Club takes part in the Leicestershire League with Men's and Mixed Teams. Last year the Men's 1st Team came top in division four. Also during the Summer the Club Championships take place and these are to find the Best in the Club. From April Club times are Wednesday evenings from 6.30pm and Sunday afternoons from 2pm. Anyone is welcome to play although non-members will be charged £5 per session (refunded on joining). There will also be coaching organised by Inside

Out Tennis who this year hope to get Juniors to take part in the Inter Club Championships.

A new idea this year is to get more Senior Players to play on an afternoon. This will also be a social event and will end with a cup of tea and biscuit (£2.50 per session).

For more information on fees, playing times, coaching and special events you can phone Christine or Dave on 01509812993.

**So make 2016 the year to join a friendly group and KEEP FIT THE OUTDOOR WAY**

We look forward to hearing from anyone who is interested in trying tennis for the first time or renewing their tennis skills.



*Fed up of  
paying high  
prices? Then why  
not visit a 'Proper'  
Nursery?*

We grow everything from Pansies to Pyracanthas on our 11 acre site  
and our costs are a fraction of what you normally pay!

- ✓ All bedding and basket plants available now
- ✓ Family run business with over 40 years experience
- ✓ Hanging basket filling service available
- ✓ Fully qualified and insured tree surgery service available by our very own Ash Dayman
- ✓ Quality, colourful and decorative shrubs and plants
- ✓ Full landscape design and build team
- ✓ Wide range of alpinas and perennials
- ✓ Home to our very own celebrity TV and radio gardener Ady Dayman
- ✓ Large selection of ceramic, wooden and decorative pots
- ✓ All lawn products including turf (anything from 1 to 1,000 rolls)
- ✓ Plant foods, fertilisers and compost
- ✓ Extensive range of gardening products and tools
- ✓ Huge selection of fruit trees and bushes
- ✓ All hedging plants
- ✓ Decorative stones, gravel, slate and rocky stones
- ✓ Top soil delivered
- ✓ Cheap bark and mulch
- ✓ Logs, coal and kindling
- ✓ Home of Charnwood Chilli Co

*Derrys Nurseries, well worth a visit . . .*

**Derrys Nurseries**  
**Main Street, Cossington LE7 4UU**  
**Tel (01509) 812815 ... open 7 days a week**

**RHS  
Chelsea  
Silver Medal  
2012**

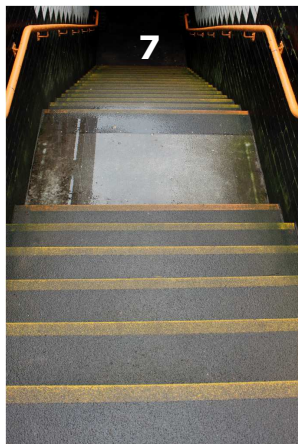
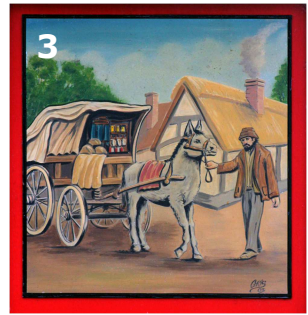
**Official Nursery  
to Her Majesty on  
Her Diamond  
Jubilee tour of  
Leicester**



## Competition Time

Identify the location of these images from around the village. Submit your answers via email to [d.r.palmer@talk21.com](mailto:d.r.palmer@talk21.com), or drop them off to the editor at 60 Heathcote Drive.

A price of £20 National Garden Centre vouchers will be awarded to the first correct answer drawn out of the hat on the 30th June 2016.





**NO JOINING FEE**

**£26.00**  
**per month**

fully inclusive membership  
with unlimited use -

**NO CONTRACT**

**BRAND NEW**  
**5,000 square feet Gym**

**on first floor**

**Barrow Road Business Park**

Next door to Costcutters

State of the art showers and changing rooms

Customer car park

Large cardio vascular equipment studio  
separate weights studio with more than  
20 individual stations.

**FREE INDUCTION SESSIONS**

**Beth Thompson fully qualified sports massage.**

Hot and cold techniques

Pre and post event massage

Injury management a prevention



Working out with a nagging pain, or just  
generally find it hard in the morning to move  
around.

neck pain, frozen shoulder, shoulder pain, back pain, tennis or golf  
elbow, lower back pain, knee pain

get it sorted on site at **Physfit Gyms Sileby**  
**01509 815490 07470 134000**

**Best equipped gym in the Soar Valley**

**Barrow Road, Sileby LE12 7LP**

**01509 815490**

9 til 9 Mon to Thurs, 9 – 7 Fri, 10 – 6 Sat, 10 – 1 Sun

physfitgyms@hotmail.com



## **The Battle of the Somme**

Late June 1916 One million British faced One million Germans along an 18 mile front. 1500 British guns fired One million shells on the German line, almost to no avail.

July 1st 7.30am 120,000 men went over the top, shoulder to shoulder carrying 601b of equipment. They advanced in lines 300ft apart. The Germans came out of the ground, set up their machine guns and shot side to side at the approaching men. The Germans killed many officers by recognising their uniforms. All that was left were groups of men hiding in craters.

The only success was the capture of Montauban one mile in front of the British lines.

July 1st 1916 almost 60,000 soldiers (1 third: killed, 2 thirds: wounded) That's about a football stadium FULL of men. Try thinking what it would be like later in the day.

Failing to break through, General Haig kept battering against an immovable object, until mid November 23,000 Anzacs were killed or wounded for one mile of mud.

1916 July, 650 soldiers of the Leicestershire Regiment were killed.

By mid November after the last attack, 1370 soldiers of the Leicestershire Regiment had lost their lives.

The British had advanced nearly 5 miles, so slowly that the German lines were as strong as ever. Killed or wounded were:

420,000 British Commonwealth

200,000 French

450,000 Germans

## **The Battle of Verdun**

Longest battle of 21st Feb 1916 to 18th December 1916

The front line was a curve round the East side of the town so Germans could shell from 3 sides.

Over one million men were crammed together along 8 miles of front. The Germans used flame throwers for the first time.

For 10 months, explosions (40 million shells) helped to kill 160,000 Frenchmen and 130,000 Germans. Another 600,000 were wounded.

geoffreymmrose@yahoo.co.uk

# **WE WILL REMEMBER THEM**

Soldiers who died in the Great War as named on the Sileby War Memorials in Chronological order.

## **Men Who died 100 years ago.**

### **1st JULY 1916 PRIVATE CORNELIUS KIDGER (Age 20) 12914 10th Bn, West Yorkshire Regiment.**

1901 Census age 5 living Catholic Chapel, Brook Street, Sileby.

1911 Census age 14 living Brook Hole/Side, Sileby.

1915 Entered France 13th July.

Awarded:- 1915 Star, British War & Victory Medals.

Son of Bernard and Kate Kidger, Morley, Leeds.

Fricourt Military Cemetery.

**284 men of Leicestershire Regiment were killed on the  
14th JULY 1916**

**I Have no information on the wounded?  
The 3 men below were Sileby Lads**

### **14th July 1916 PRIVATE ALBERT BETTS (Age 26) 10219 6th Bn, Leicestershire Regiment.**

1901 Census age 10 living Cemetery Road, Sileby.

1914 18th August Attestation Form born Sileby age 23, Shoe Finisher.

1915 Entered France 29th July.

Awarded:- 1915 Star, British War & Victory Medals.

Son of Tom and Betsey Betts.

Thiepval Memorial.

### **14th JULY 1916 PRIVATE REUBEN GAMBLE (Age 29) 18249 9th Bn, Leicestershire Regiment.**

1911 Census Reuben Flude age 22 living Countesthorpe.

1915 Entered France 11th October.

Awarded:- 1915 Star, British War & Victory Medals.

1916 His brother William Gamble awarded military medal but died 07/12/1916.

1918 Polling List: Parents living 43 Albion Road, Sileby.

1919 Medal Card:- Mrs Gamble makes application for sons medals.

Son of William and Mary Gamble.

Thiepval Memorial.

### **14th JULY 1916 SERJEANT ERNEST HOLLAND (Age 31) 16367 9th Bn, Leicestershire Regiment.**

1901 Census age 17 living Cossington Road, Sileby. Brick Laborer.

1911 Census age 26 living Swan Street, Sileby. Brick Maker.

1915 Entered France 9th September.

Awarded:- 1915 Star, British War & Victory Medals.

Son of Jeseph and Hannah Holland.

Flatiron Copse Cemetery Mametz.

Continues..

**15<sup>th</sup> JULY**                      **RIFLEMAN GEORGE WILLIAM WATSON (Age 21)**  
**1916**                              **C/853 16<sup>th</sup> Bn, Kings Royal Rifle Corps.**  
1901 Census age 5 living Highfields ( 3 sisters born in Sileby).  
1911 Census age 15 living Hughenden Drive, Leicester (**Went school here?**)  
Awarded:- 1915 Star, British War & Victory Medals.  
Son of Charles and Catherine Watson.  
Thiepval Memorial.

**18<sup>th</sup> JULY**                      **COMPANY SERJEANT MAJOR**  
**EDWARD PERKINS (Age 25)**  
**1916**                              **8751 7<sup>th</sup> Bn, Leicestershire Regiment.**  
1901 Census age 10 living **Barrow Road, Sileby.**  
1909 11<sup>th</sup> June Attestation Form:- age 18 years 8 months. Shoehand.  
1911 Census Edward Perkins:- 2 Leics Reg Institution or Vessel – India.  
1914 Entered France 12<sup>th</sup> October.  
Awarded:- 1914 Star, British War & Victory Medals.  
1915 Apr/June married Eliza Ann Hull at Orms Kirk, Hampshire.  
1916 Casualty Form:- Gun shot wound right leg, died of wounds received in action.  
Son of George and Edith Perkins.  
Husband of Eliza A Perkins 26 **Seagrave Road, Sileby.**  
St Sever Cemetery Rouen.


**16<sup>th</sup> SEPT**                      **PRIVATE WILFRED RAVEN**  
**1916**                              **42470 15<sup>th</sup> Bn, Durham Light Infantry.**  
1901 Census age 4 living **Barrow Road, Sileby.**  
1911 Census age 14 living **Barrow, Sileby.**  
1916 Census entered France.  
Awarded:- British War & Victory Medals.  
Son of Mrs Rose Raven of 69 **Barrow Road, Sileby.**  
Thiepval Memorial.

**Chinese Proverb**  
**A Man dies TWICE**  
**Once when he dies.**  
**Again when he is forgotten.**

This got me thinking....  
The oldest man I remember is:  
Uncle John Collington Born 1864.  
Died 1948 age 84.  
I was 8 and saw him in his coffin at 35 High Street.  
Can you think of anyone further back than 1864?

[geoffreymrose@yahoo.co.uk](mailto:geoffreymrose@yahoo.co.uk)  
[www.Silebyfaces](http://www.Silebyfaces)



- 
- London Trained Stylists
  - Luxury Hair Extensions
  - Kérastase Premier Salon
  - L'Oréal Award Winning Colour Experts
  - Online Booking Now Available
  - Award Winning Gents Stylists
  - Brazilian Blow Dry Specialists
  - Experienced Bridal Hair Team

LANZA

# 50% OFF YOUR FIRST CUT & FINISH

Book now by calling **01509 812 968** and quote *'Talk@Sileby'*  
then simply present this advert at your appointment.

01509 812 968 · [www.lanzahair.co.uk](http://www.lanzahair.co.uk) ·  LanzaHairDesign  
Lanza Hair Design · 57 The Banks · Sileby · Leicestershire · LE12 7RD

\*Appointments subject to availability with selected stylists. Not to be used in conjunction with any other offer. Offer only for new clients of Lanza Hair Design on their first visit. Reference must be quoted on booking and advert presented at appointment.