

Talk@Sileby

Village Newsletter



Sileby Flooding, are you aware?

46

Spring 2017

www.sileby-village.co.uk



Fed up of
paying high
prices? Then why
not visit a 'Proper'
Nursery?

We grow everything from Pansies to Pyracanthas on our 11 acre site
and our costs are a fraction of what you normally pay!

- ✓ All bedding and basket plants available now
- ✓ Family run business with over 40 years experience
- ✓ Hanging basket filling service available
- ✓ Fully qualified and insured tree surgery service available by our very own Ash Dayman
- ✓ Quality, colourful and decorative shrubs and plants
- ✓ Full landscape design and build team
- ✓ Wide range of alpiners and perennials
- ✓ Home to our very own celebrity TV and radio gardener Ady Dayman
- ✓ Large selection of ceramic, wooden and decorative pots
- ✓ All lawn products including turf (anything from 1 to 1,000 rolls)
- ✓ Plant foods, fertilisers and compost
- ✓ Extensive range of gardening products and tools
- ✓ Huge selection of fruit trees and bushes
- ✓ All hedging plants
- ✓ Decorative stones, gravel, slate and rockery stones
- ✓ Top soil delivered
- ✓ Cheap bark and mulch
- ✓ Logs, coal and kindling
- ✓ Home of Charnwood Chilli Co

RHS
Chelsea
Silver Medal
2012

Official Nursery
to Her Majesty on
Her Diamond
Jubilee tour of
Leicester

Derrys Nurseries, well worth a visit . . .

Derrys Nurseries
Main Street, Cossington LE7 4UU
Tel (01509) 812815 ... open 7 days a week

Sileby Parish Council Bags £2,000 From Carrier Bag Charge Fund

Sileby Parish Council is delighted to announce it has bagged £2,000 from a Tesco funding scheme. Tesco teamed up with Groundwork to launch its Bags of Help funding initiative, which sees grants of up to £5,000, £2,000 and £1,000 – all raised from the 5p bag levy – being awarded to local outdoor community projects every month. Millions of shoppers voted in stores up and down the country. And it can now be revealed Sileby Parish Council has been awarded £2,000. The grant will be put towards a basket swing which will be sited in the Memorial Park. This popular piece of equipment will benefit younger children with disabilities/ impairments, as those who are unable to support themselves will be able to be placed in the swing so they can lie down in it; we feel it is important that they are able to be included in outdoor activities with their peers.

Sileby Scout Group held a Special Presentation Evening on a cold January evening to say "Thank You" to Colin Thompson, who has just completed 30 years of Scouting at Sileby. He joined as a Cub, then a Scout, and then a Venture Scout. As he progressed through the Group he has been Cub and Scout Leader and finally Group Scout Leader.

He was presented with his 30 years Service Badge by District Commissioner, Paul Smith, in front of an audience of parents, Beavers, Cubs, Scouts and "old boys and girls". Also present was County Commissioner, Carol Black, who has been a great help to Colin in the past. The audience were entertained by songs and sketches from the Beavers, Cubs and Scouts.

Colin has also been the instigator of the renovation of the Scout H.Q by raising money from a great number of sources.

This was a special evening for Scout Hannah Bown who was presented with her Gold Chief Scout by Colin who also invested several new Scouts to the Group.

There were many special "Thank You" gifts from the Beavers, Cubs and Scouts as well as several scrap books for Colin to reminisce over. Colin decided to finish as GSL due to work commitments. Over the time Colin has been at Sileby Scouts he has been helped by his wife, Marian, and his three children, Arron, Rowan and Shona. Shona has now nearly completed her Gold Duke of Edinburgh Award with Adventure Scouts.



Sileby Scout groups are in need of new leaders, we have a waiting list of children wanting to join but without help we can not offer places in the groups. If you can give some time to help then please contact District Commissioner, Paul Smith, by email dc@charnwoodscouts.org.uk

Contacts

Editor:	Dave Palmer, 60 Heathcote Drive, Sileby, d.r.palmer@talk21.com	07926039644
Advertising:	Lynne Root lynne_root@msn.com	
Printed by:	Norwood Press, Ellistown	01530 262020

If you would like to give your feedback, articles or letters these can be sent to the Editor

The advertising rates for Talk@Sileby are listed below

Quarter Page £30 Half Page £50 Full Page £80
Inside front/inside back cover £105.00
Back cover £135.00

These prices are per issue. 10% discount for booking and paying for three insertions in advance

Next Issue will be Summer 2017. Copy and advert deadline is 30th June 2017.

Disclaimer: The views expressed in this magazine are the views of the contributors and not necessarily the views of Talk@Sileby.

Talk@Sileby

Magazine Co-Ordinator:	Ken Jones
Editor:	Dave Palmer
Secretary:	Pat Haswell
Treasurer:	Lionel Blower
Societies Co-Ordinator:	Robert Butler
Advertising:	Lynne Root

Your community magazine is delivered to every home and business in Sileby, that's about 3800 addresses!

It is published 3 times a year: Spring around Easter time, in the summer and in November just prior to the Christmas lights "Switch on".

We have no political or commercial or religious allegiances and aim to be impartial and independent. We are entirely self funding through advertising revenue. We are here solely to promote Sileby, its businesses, residents, clubs, societies, associations, schools and churches. All items and pictures are copyright Talk@Sileby unless otherwise stated.

Talk @ Sileby, By Sileby people. For Sileby people

Front Cover Picture: Flooding in Sileby.



NO JOINING FEE
£26.00
per month

fully inclusive membership
with unlimited use -
NO CONTRACT

BRAND NEW
5,000 square feet Gym
on first floor
Barrow Road Business Park
Next door to Costcutters

State of the art showers and changing rooms
Customer car park

Large cardio vascular equipment studio
separate weights studio with more than
20 individual stations.

FREE INDUCTION SESSIONS



Best equipped gym in the Soar Valley

Barrow Road, Sileby LE12 7LP

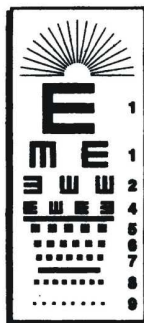
01509 815490

9 til 9 Mon to Thurs, 9 - 7 Fri, 10 - 6 Sat, 10 - 1 Sun

physfitgyms@hotmail.com



www.physfitgyms.co.uk



A.G. & D. RICHARDS

OPTOMETRISTS

A. G. Richards, B.Sc., M.C.Optom. & D. Richards, B.Sc., M.C. Optom.

22 KING STREET, SILEBY, LEICESTER, LE12 7NA

Tel: (01509) 812088

EYE CARE for the WHOLE FAMILY
Glaucoma screening and advice on general eye care

Large range of frames from designer to budget

Full range of contact lenses - NHS patients welcome

Home visits available - Accessories and solutions

We take time to provide you with the right eye care

On Tuesday, 21 February a Neighbourhood Plan Community Event was held at the Community Centre. This event was held to help everyone understand what a Neighbourhood Plan is and the benefits, to the village, of producing one. The event was fairly well received and around 40 people attended from different parts of the community. We are delighted that a number of residents have volunteered to form an Advisory Committee, along with some of our Parish Councillors. To help bring the Plan together the Advisory Committee will work with our consultant, Gary Kirk, Managing Director, of YourLocale. We appreciate it is a large undertaking to produce a Neighbourhood Plan but it is one which will help shape the development of our village in the years to come. This is a combined process, it cannot solely be a Parish Council initiative, and we would very much welcome input from all residents. If you were unable to attend this event and are interested in being a part of 'shaping the village's future', it is not too late. If you wish to be involved, or would like further information please contact the Clerk on 01509 813075 or email clerk@silebyparishcouncil.org.uk

Sileby Cemetery

The adornment of graves in the Cemetery has become a matter of great concern and so I wish to remind people of the rules and regulations regarding burial plots, including ash plots, in Sileby Cemetery.

To allow for better maintenance of the graves and surrounding area, it was agreed that on 'E' graves, headstones incorporating a vase will be allowed to be erected and the headstone shall be no higher than 3 feet. The graves are to be retained as grass and the following **is not allowed**:

- Kerbing around the grave
- Cultivation of the grave or
- the placing of additional vases/plaques on the grave

The casket graves (cremation) allow a headstone 12x12x4 inches with a sloping front and no other surround is allowed.

As I am sure you will appreciate, a cemetery is an important place in a local community, a place which should be treated with respect and in a dignified manner. The memorials are a real source of comfort to the

families of the people they commemorate. Sileby Parish Council's regulations seek to find the right balance between the wishes of individual families and those of the wider community; our approach is that our cemetery should be harmonious in appearance and a worthy setting for a final resting place.

I am sure you will agree it is important these regulations are in place so as to guarantee the cemetery is safe and secure and will stand the test of time to ensure families and friends can visit their loved one in a well-maintained environment for many years to come. On behalf of Sileby Parish Council I wish to convey my thanks to everyone for observing and adhering to these rules and regulations.

Sileby St Mary's Ladies Fellowship

I would like to tell you about St Mary's Ladies Fellowship. I have been going to the Ladies Fellowship for about four years now, and it is one of the friendliest groups I have ever been to. We meet on a Tuesday afternoon at 2.30pm at Pochin Hall on Mountsorrel Lane (or The St Mary's Centre as it is now called). Some Tuesdays we have a speaker from either a charity or a local speaker on their pet subject. This year we have had the Mayor and Mayoress of Charnwood and are looking forward to a Sileby lady telling us about "Life in 60's London". Sometimes we just have a Members Day when stories and poems are told. Or like today we just had a "Chat Afternoon" but with jam and cream homemade scones. Yummy!!! Any lady is welcome to come and join us, (you don't have to belong to the Church). I am sure that you would be most welcome and would appreciate the comradeship.



Whole Life Disability Strategy

Significant progress **is being** made in **the development of** a Whole Life Disability Strategy for Leicestershire.

The County Council is committed to making it easier for children, young people and their families to access support, promoting the wellbeing of disabled people and increasing people's opportunities to live independent lives in adulthood. The Council's aim is to work with partners to create an integrated strategy, and development of a new approach has been going on for some time. The proposal has been agreed by members of the Integration Executive, which consists of senior representatives of the Council and local NHS bodies.

By working together partners will be able to align services, reduce duplication of effort, create efficiency savings and ultimately better meet people's needs. Professionals, children, young people and families will be involved in shaping the Strategy.

Cyber Safety

Keeping children safe online is a matter of great concern nowadays.

A 45-minute, interactive play called "In The Net" has been created by a theatre company, Alter Ego, and was seen by teachers from across the county at a conference earlier this year. The event was organized by Leicestershire County Council's Child Sexual Exploitation (CSE) Team. The play is designed to get seven-to-nine year olds thinking about the serious issues of keeping personal information safe, chatting to people online and the effects of cyber bullying. It is hoped the play will tour in Leicestershire, subject to the availability of the theatre company.

The County Council's CSE Team works with the police and NHS staff as part of one, joint team. The focus is on raising awareness of CSE and providing quicker, more effective support to victims. By disrupting offenders, and helping victims feel more confident about disclosing abuse and exploitation, the team is helping to secure convictions. Approximately 55 per cent of cases of CSE involve online grooming and exploitation.

Richard Shepherd, County Councillor
Telephone: 01509 413903
Email: richard.shepherd@leics.gov.uk

Sileby Library has celebrated its first birthday as a community managed library on 14th December. We are 1! Last year was a great achievement for the Trustees and our fantastic volunteers. Our aim has always been to ensure the library is used for the community of Sileby and we have made great progress.

- Longer opening hours
- Increased book selection with our Independent Book Loan
- Working with the schools of Sileby and set up regular class visits
- Established links with Homefield College for students to gain invaluable working experience
- Songs and Rhymes for younger children, Craft Group, Cubs, Brownies and Rainbows visits
- Leicestershire Police Beat Surgery

The Trustees are looking forward to continuing with the development of the library. We are currently arranging improvements to our kitchen facilities (we have none!) and more energy efficient lighting for the library. We are also looking into the feasibility of upgrading our children's area and IT furniture if possible.

Huge thanks go to our volunteers, without them there would be no library! We need more volunteers to join the team. If you can spare a couple of hours to volunteer, please come into the library to leave your details and you can be sure we will contact you.

Our grateful thanks to the Parish Council too for their continued support and, you, the residents of Sileby for making your library such a success. Please come and see us soon!

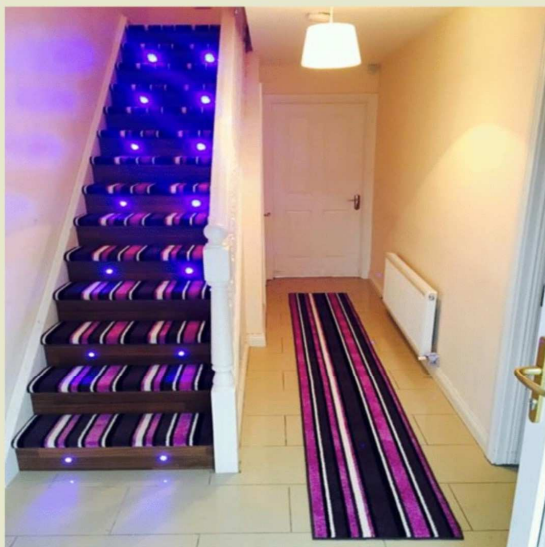
Find us on Facebook — Sileby Community Library, Twitter @SilebyCMLibrary or look at our website www.silebylibrary.org
Email: info@silebylibrary.org





14 King Street,
Sileby,
Tel 01509 815417
Mobile 0770 609 3303

Email Jarrod@carpetstorrs.co.uk
Website www.carpetstorrs.co.uk



**Just a few of the
Innovative floor designs laid by
our expert fitters. Call in to the
Showroom to choose a new look
for new flooring for your home.**

- * Free measuring service
- * Free quotations
- * Extensive range of carpets
- * Huge selection of vinyl
- * Lots of laminates
- * Huge display of L V T

We have
Twist pile, Berber, Saxony's
Loop pile, Naturals, Bathroom
Cut pile prints, Velvet / velour
and a great range of stripes

B. YATES & SON

**Plumbing, Heating
& Gas Services**

**Bathrooms
& Showers**

**Gas Safe
Registered**

Mobile: 078088 30697

R H Plastering and Building

Local plasterer, over 20 years in trade

All aspects of plastering, rendering, damp-proofing, coving and building

Private, commercial and insurance work undertaken

Contact Richard Herbert for a free quote and advice.

**162 Ratcliffe Road
Sileby
Leicestershire
LE12 7QA**

Tel: 01509 812190

Mobile: 0794 1170 230



HAVE YOU MADE YOUR WILL YET?

Or is your old Will out of date?

MAKE SURE YOUR ASSETS GO TO THOSE YOU LOVE.

For Wills - Trusts -
Estate Planning, Lasting Power of Attorney and Funeral Plans

We come to you! For an appointment or a brochure telephone

Mrs Chris Thomas or Mrs Clare Cooper

01509 507334 (Home)

08450 568571 (Office)

Just Wills & Legal Services

90 The Meadows, Shepshed, LE12 9QN
Member of The Society of Will Writers

July 1st 2015 -

By Pat Haswell

This was a red-letter day for me - the day another woman joined the magazine committee! For most of the time I have been associated with Talk@Sileby magazine I have been the lonely lady in the otherwise all male committee - but now we were to be joined by Lynne Root. I looked forward to getting to know her - and later writing her profile for the magazine. *(The afternoon I spent with her was lovely - just like chatting with an old friend - we seemed to have quite a lot in common.)*

Lynne has lived in Sileby all her life and recalls growing up in Sileby 1950's and '60's as being a very happy time. Her earliest memory is of going to dancing classes when she was about three years old - they were held in a room at the back of the old Plough public house on High Street. (Look up above Grace-Marie's shop window - you can still see the old beam which supported the inn sign) The pupils put on shows in the Village Institute (now demolished) which was behind the Free Trade Inn.

At that time there was an Infant School on Barrow Road - the lovely Mountsorrel Granite building which later became The Old Schoolhouse Restaurant, and is now converted into apartments. Like most Sileby children Lynne began her education there, moving on at seven to The County Primary School (now Redlands) and finally to Humphrey Perkins in Barrow. Lynne enjoys sport, in her youth playing hockey for Sileby Ladies - she still plays badminton, forty years after being introduced to the game.

Playing with friends in the park, and becoming a Guide provided her early social life but Lynne remembers as they got older groups of girls would regularly infiltrate the Boys' Club, which was in a disused factory in Cemetery Road. Eventually its name was changed to Youth Club! The girls made sure that they were at the club when Frankie Vaughan made a visit - he was a handsome and popular singer during the latter half of the 20th century. As a boy he had been a member of the Lancaster Lads' Club - when he became successful in show business he made considerable donations to the National Association of Boys' Clubs, including the proceeds from one record each year - maybe Sileby Club was a beneficiary?

While visiting the Horse and Trumpet with a group of friends Lynne met her future husband John - they were married in 1971 - their children Helen and Philip still live in Sileby. While their children were growing up Lynne was a full-time mum, gradually returning to the workplace through part-time jobs. In 1981/2 two NNEB-qualified Playgroup Leaders established the Sileby Nursery Playgroup in a building in what is now the Tesco car park; they were assisted by several mums - Lynne included.

All the Sileby people that I have profiled have told me what a wonderful place Sileby was in their youth, and Lynne was no exception - as with many villages, folk lived, went to school and socialised in the village - were baptised, married and buried in the place they had always called home. However, Sileby folk had the added benefit of the factories which provided employment - few people had to travel out of the village to earn a living. The village had everything they needed - grocery shops, butcher, baker, doctor, dentist and opticians, cobbler, a bike shop - a cinema and social clubs - visits to Loughborough were few and far between. "Work" being in the village, the majority of people could walk or cycle - the roads were thronged with bicycles in the early morning and at "knocking off" time. Lynne worked in the offices at Bradgate textiles, and later at A.G. & D.

Optometrists on King Street.

Having grown up and worked together, it seemed that everybody knew everyone else - either you had been in the same class at school, or worked at the same factory - met at Church or lived in the same street. Neighbour knew neighbour, families lived nearby and no-one felt isolated - folk helped and looked after each other in times of trouble. The churches and chapels provide another common meeting place - besides the regular services they host numerous social groups and events - Lynne worships at St Mary's and is Secretary to the fund-raising group Friends of St Mary's, who arrange social events to raise money for the building.

Lynne has a busy life - we are fortunate that she agreed to join the committee of Talk@Sileby, where her knowledge of the village and the various activities which take place will augment - (and add a feminine perspective!) the considerable pool of knowledge which already exists within the committee.

St Mary's Church

The new year is now well under way and it doesn't seem long since Christmas when we saw a very joyful time, with the schools and play-school coming in to Church for their own celebrations. The attendance at both the Family Carol Service and the traditional 6:30pm carols by candlelight service, was excellent. The Church looked magnificent with the lights and tree all aglow, with a warmth atmosphere to be enjoyed. Last summer our Rector, Rev Richard Hopkins moved to pastures new in Bramcote, Nottingham, we were sorry to lose him and his family. With all the friends they had made during their time we said a fond farewell at a united service in July. We now look forward to the arrival of our new Rector Rev Duncan Beet and family who hope to be with us sometime in the Spring.

Apart from Church services we have a Youth Group on various evenings, Ladies Fellowship, on Tuesday afternoons, and Squeals on Wheels on Thursday mornings. The Church is also open for coffee and biscuits every Wednesday afternoon from 2-4pm, where you can have a chat or just enjoy the quietness of the Church building. A very warm welcome is ensured to one and all at any of the above activities.

The Friends of St Mary's have several events planned for this year and so far there is a coffee morning in Church on Saturday 13th May from 10-12 noon, and open day at Quebec Farm on Saturday 1st July. There are other events planned for later in the year. So, do watch out for the banner on the Church, village notice boards and on social media, to see what's happening.

Last but not least are there any campanologists in the area currently not using their talents or budding campanologists who have always fancied trying their hand at bell ringing but not sure? We are a friendly band, who are looking to seek new members. If you would like to know more, to come along for a try, or find out more of what is involved, you would be most welcome. There is no regimented commitment, we do have practice nights that are flexible depending on how many of us are available. In this particular instance please contact Jim Preston on 01509 816572, for further information.



Background and right: A was a major event.

Left: 2016 flooding that Siren

Many of you will remember that in our "Meet the Councillor Robert Butler, who is also our Sileby Volunteer Flood Warden" occasions when the Flood Siren was sounded last year, particularly those of us living in or travelling through the area.

"Many of you know me from my Flood Updates on Social Media Sites, Travel Website & from seeing me on "Flood Patrol" during Times of Floods on Mill Lane, Mill Lane & Syston Road (on the Syston side of Cossington Road). The Flood Siren/Beacon going off twice in 2016 – (the first time in 2016) so I thought that I should get Sileby's Flood Prone Residents list updated."

IF YOU HAVE A FLOODING PROBLEM SUCH AS FROM SILEBY BROOK OR ANY OTHER FLOODING ISSUE THEN PLEASE CONTACT ME.

Text or Phone call to my mobile 07514 243887 (leave a Detailed Message) Or Email: WweRefsRule@yahoo.co.uk

FINALLY

SILEBY RESIDENTS REMEMBER "ROAD-CLOSED/FLOOD" MEANS ROAD-CLOSED. SO PLEASE ONLY GO OUT IF NECESSARY OR USE ALTERNATIVE ROUTES.

**Many thanks to all the Sileby residents who support me.
Robert Butler (Sileby Volunteer Flood warden)**

April 1998 flooding which

triggered the Flood



the Magazine Team" (Issue No 40) we profiled
Volunteer Flood Warden. Following on from the two
last year, Rob has a few reminders for us all, but
ugh the flood-prone areas.

sites (Facebook & Twitter), Local Radio Stations & BBC Traffic/
of Flood in Flood Prone Areas such as Slash Lane, Mountsorrel
(Lock).

for several years) - reminded me that Sileby itself has flooding
idents Aware & Prepared for Flooding.

OK FLOODING, A HIGHWAY DRAIN FLOODING ISSUE, SEWAGE
E CONTACT ME -

Message & Contact Details if I don't pick up).
of the Flooding Issue & Contact Details.

ANS **"THE ROAD IS CLOSED"**!
ROUTES TO YOUR DESTINATION.

WED 10TH MAY - High Street, Barrow Road, to either the New Railway Bridge and/or The Peace Garden. Return via Barrow Road, Mountsorrel Lane to St Marys Church.

WED 21ST JUNE - Cross Brook Street, along Cossington Road to Charles Street and follow the footpath to Sherrard Drive, Quaker Road and back along Cossington Road to The Green Place.

WED 12TH JULY- **bus pass needed** - No 2 bus to Cossington School. Follow the footpath into Cossington Meadows to Platts Lane and return to the centre of the village to catch the No 2 bus back to Sileby.

WED 9TH AUGUST- Cross High Street and follow the footpath to Mill Lane and Sileby Mill **or** just to Mill Lane and return by Mountsorrel Lane to St Marys Church.

WED 13TH SEPTEMBER - **bus pass needed** - No 2 bus to Barrow upon Soar. Follow footpath to Mill Lane and walk along the canal to Proctors caravan park. Return by No 2 bus to Sileby.

WED 11TH OCTOBER - **bus pass needed** - No 2 bus to Highgate School. Follow the footpath to the Memorial Park and along King Street to St Marys Church.

All walks meet at Sileby Community Centre on High Street at 2.30pm

Stout shoes are advised and no dogs allowed.

All walks are approx. one to one and a half miles long and will take about one hour.



Sileby Tennis Club Celebrates its 90th Birthday

Sileby Tennis Club will be celebrating its 90th birthday this year. The Club began in 1927, on the same site as it is now, just along the footpath from the Park towards Seagrave. The grass courts were originally where the Bowls Green is now but after the 2nd World War a Bowling Club was formed and the Tennis Club moved further back and shale courts were laid. As the years went on and more members joined in 2000 it was decided to ask the National Lottery for a grant towards new courts. Now there are four All-Weather Courts and a new "Clubhouse".

During the Summer months members take part in the Club Championships. There are Men's and Ladies Singles, Men's and Ladies Doubles, Mixed Doubles and new to the Club a Handicap Shield. There are also Boys and Girls Trophies. The first Trophies to be played for were donated by local industrialists and the Methodist Church and were donated by C.H.Martin and J.A. Newbold. These were won by Mr.H. Simons and Miss M. Oswin in 1929.

During the new season of 2017 two Open Days will be organised. The first on Sunday April 9th and the second on Sunday June 25th which will be a bigger celebration when FREE strawberries and cream will be offered to all prospective new members. There will also be special offers for new adult members who join on either of the two Open Days.

We would like to invite everyone who is interested in joining this successful Club for either social tennis or league tennis to come down on these Open Days or on a Sunday afternoon and during the Summer on a Wednesday evening.



In 2016 the ladies bowling club celebrated their 75th anniversary. This was marked by a celebration match and meal which was attended by the Bowls Leicestershire Ladies President, Annyece Johnson, Secretary Kate Kyle, Presidents of bowling clubs from around the county and past and present members of our club.

During the year we were very fortunate to obtain a grant from Sileby Parish Council for £800 to purchase sets of small and junior bowls for use by our Junior bowlers. We have had over 30 Girl Guides come and “have a go” and have also invited the village schools.

Bowling is a sport that can be enjoyed by children and adults alike, age is no barrier. It encourages hand/eye coordination, concentration and social skills.

In August last year we held a junior Open Evening which was attended by Sileby Parish Council Chairman, Fiona Hughes and the deputy chairman Paul Murphy together with various members of the Council and children from the village. They all enjoyed a fun evening on the green and we were able to formally thank the Parish Council for their support.

We are having a Family Have a Go afternoon on Sunday 21st May from 2pm.

Coaching, bowls and free refreshments will be available and the bar will be open .Come along and have a go or just watch. We also have open evenings every Tuesday evening from 5.30pm. (no charge !). All we ask is that you wear flat shoes please. Everyone is welcome.

For further information
telephone Bron on
01509 814081.



The inaugural Sileby Drawing Festival (<http://silebydrawingfestival.co.uk/>) took place across the village from 26-29 October. Free, drop-in activities celebrated the art of drawing and encouraged all ages to get creative. Activities included life-drawing, mono-printing, as well as making unusual mark-making tools and collaborative artwork projects. Message from Shelly Mastericks, the festival's director:

'The festival was a massive success and I was thrilled to see so many people of all ages engaged in the drawing activities. There was a real sense of community and it was great to meet and chat to so many local people as well as those who travelled from further afield to take part. I would like to thank the local businesses, the Greenplace, the brewery and cafe nineteen for all being part of the event and helping to bring the community together. Please do let us know of any suggestions of what you might like to see at next year's edition.'



Pictured: Life Drawing at the Greenplace, and Sileby Takover Day.





A.G. & D. RICHARDS

OPTOMETRISTS

A. G. Richards, B.Sc., M.C.Optom. & D. Richards, B.Sc., M.C. Optom.

22 KING STREET, SILEBY, LEICESTER, LE12 7NA

Tel: (01509) 812088

EYE CARE for the WHOLE FAMILY Glaucoma screening and advice on general eye care

Large range of frames from designer to budget

Full range of contact lenses – NHS patients welcome

Home visits available – Accessories and solutions

We take time to provide you with the right eye care

SMARTLY STITCH TAILORS

CLOTHING ALTERATIONS & REPAIRS

Professional Alterations and Repair Work

Trousers, Jackets, Coats, Skirts, Dresses and Many Other
Garments, New Zips Fitted

Made to Measure Curtains

Alterations also undertaken

Leather Garments Bags Repaired

Altered and Repaired

And zips fitted

PROFESSIONAL

DRY CLEANING AGENTS

**Motorbike, Equestrian & Leather Clothing
Repaired and altered**

SMARTLY STITCH

TAILORS

1a Little Church Lane (Next to St Mary's Church)
High Street, Sileby LE12 7NE
www.smartlystitch.co.uk

TEL: 01509 815658



Charnwood Hearing Aid Centre

Lynne Leeming, MSc RHAD BSHAA

Your local Widex specialist

Existing hearing aid users welcome

5 Staddon Road
Anstey
Leicester
LE7 7AY

Telephone: 0116 236 6633

Free parking in the Nook car park





Sunrise Eggs



Part of Sileby and Seagrave for almost 50 years

Sponsors of Sileby Town Cricket Club



Sunrise Poultry Farms Ltd, 250 Seagrave Road, Sileby, Leicestershire LE12 7NJ
01509 812441 info@sunrise-eggs.com www.sunrise-eggs.com



TURN TO US FOR HELP AND SUPPORT

In your time of need we'll take care of all
the funeral arrangements.
Call us 24 hours a day.

- Funeral Pre - Payment Plans
- Memorials

H TOWELL FUNERAL SERVICE

97 Swan Street
Sileby LE12 7NN

01509 814404

5 Danvers Road
Mountsorrell LE12 7JG

0116 230 2449



Part of Dignity plc. A British Company.


Dignity
CARING FUNERAL
SERVICES

Why not come and join us and enjoy exploring the local parish footpaths and countryside? A chance to meet with new people and healthy exercise. Everyone welcome.

All walks start at Sileby Community Centre at 7.00p.m.
led by John & Beverly Burton

Tuesday Ratcliffe Road, Ratcliffe College,
25th April Blackberry Lane, Platts Lane, Cossington
 Meadows, Cossington Road, 3 ½ miles

Tuesday Barrow Road, River Soar, Mountsorrel
16th May Lock, River Soar, Old Mountsorrel
 Quarry, Mountsorrel Hills,
 Sileby Mill, 4 ½ miles

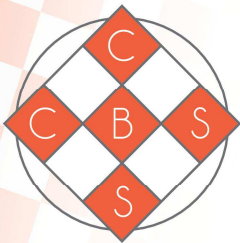
Tuesday Cossington Road, Polly Peggs, River
20th June Wreake, Old Junction Lock, Cossington
 Mill, Brambles & Briers, Sileby Mill,
 5 miles

Tuesday Ratcliffe Road, Ratcliffe College, Ratcliffe
11th July on the Wreake, Humble Lane, Cossington
 Church, Cossington Road, 5 miles

Tuesday Sileby Mill, River Soar, Rothley Church,
15th August Farnham Bridge, Sileby Mill, 4 ½ miles

All persons taking part in these walks must understand that they do so at their own risk.

If you enjoy walking and would like to walk more often, the Loughborough & District CHA Rambling Club has a weekly programme of local walks. If you would like more information please ask John or Beverly for a current programme of walks.



Central Business Services

FREE INITIAL CONSULTATION

*Accountancy, bookkeeping and
affordable business advice
- on your doorstep*

A fully comprehensive service for the Self-Employed, Partnerships and Ltd companies, covering all aspects of Accounts, PAYE, CIS, Tax Returns, Company Formation etc...

Oak Business Centre, 79-93 Ratcliffe Road,
Sileby, Loughborough LE12 7PU

Our friendly, approachable, team provides a personalised service, suited to your individual needs.



www.centralbusiness.co.uk

Tel: 01509 816150

Fax: 01509 416852

BOYS II MEN

**TOP QUALITY EXPERIENCED
HAIRSTYLISTS**

**Friendly Atmosphere and all cuts at
Reasonable Prices**

12b High Street, Sileby
LE12 7RX

☎ (01509) 812357

Explore the Beautiful River Soar



Sileby Mill Boatyard Ltd

Family day trips from Sileby Mill where you can explore the beautiful River Soar in either direction. Head south and you will pass Watermead Country Park through some delightful countryside.

Birstall makes a good lunchtime destination with a large riverside pub, or you can press on a bit further towards Leicester. Head north and you will meander through lush water meadows, past the villages of Mountsorrel and Barrow.

Our purpose built, all weather narrowboats Rumble, Fumble and Jumble are ideal for a family outing, birthday, anniversary or reunion parties, or a business day out with a difference. Why not join the growing number of local and national companies who have found our day boats perfect for team development days.

**Find us at: Mill Lane, Sileby, Loughborough LE12 7UX
Call Kate or Sandra at 01509 813583
Email: silebymill@tiscali.co.uk | www.silebymill.com**

KATHRYN DOWDING AT



*Full range of legal services provided.
Including:*

- Wills and Probate
- Lasting Power of Attorney
- Divorce and Separation
- Buying and selling Property

**Free Home visits available * Free Initial Advice * Fixed
Costs**

Call 01509 410388

Email: kathryn@garrettlongsolicitors.co.uk

**35-37 High Street, Barrow-upon-Soar,
Leicestershire LE12 8PY**

My Heroes Two men who gave their working lives to Sileby and got to know more villagers between them than anybody else!

DOCTOR:

JAMES SMITH GRAY

1880-1961

Born: Scotland

1906 Came to Syston

1910 Moved to Dunnottar, **Cossington Rd.**

Where he lived and practised 50 years.

Founded: Sileby branch of

St Johns Ambulance Brigade.

Married Agnes Annie.



**THEY
DON'T
MAKE
THEM
LIKE
THESE
ANYMORE,
BOTH
SAVED
MY LIFE
A FEW
TIMES!**

DOCTOR:

BRIAN CHRISTIE

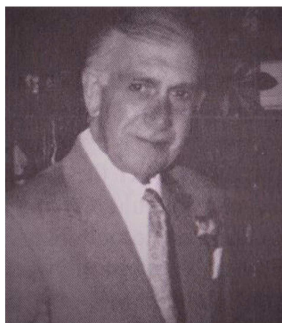
Born: Northern Ireland

1955 Came to Sileby

Lived: Dunnottar, **Cossington Rd, Sileby.**

Practised 35 years.

Member of Soar Valley Rotary Club.



Thanks to the Stockade for most of these details.

For more **look up** The Stockade on Sileby Village Website.

No. 5, page 6 Doctor **Gray**

No. 13, page 5 Dr **Gray** (would like to read his diary)

No. 14, page 8 Doctor **Christie**

For those interested in Sileby about 25 years ago and stories of much earlier have a look at:

Sileby Village Website

Click: Sileby magazines (on left)

Click: Stockade (on left) and bygone Sileby.

Click: Number on magazine.

Move square on right to find page.

Such as: **issue:-**

2. pg 23. Coming of Rail and P.O

3. pg 12. Memories of Canby Filed Lodge

7. pg 3. Brickyards

9. pg 5. Top of Albion Rd

10. pg 3. Good Luck story

11. pg 25. The Patch Work

12. pg 6. Dead Horse, pg 10. Horace Yates, pg 25. The Bells

13. pg 24. Canal

14. pg 22/23. Memories

16. pg 9/11. Memories (sad)

17. pg 11. History Sileby

P.S click Sileby photo's to see your street.

Geoff Rose

WE WILL REMEMBER THEM

Soldiers who died in the Great War as named on the Sileby War Memorials in Chronological order.

Men Who died 100 years ago.

29th APR **PRIVATE ALBERT WILLIAM BEARDMAN** (on church memorial)
BEADMAN (on C.W.G.C)

1917 **27282. 7th Bn, Leicestershire Regiment.**

1891 Born Loughborough. Enlisted at **Sileby.**

1914 Married Louisa D Weldon (1918 living **46 The Banks.**)

1915 Service Records: Residence **46 The Banks, Sileby.**

Son of William and Alice Beadman, 12 Broad St, Loughborough.

Awarded:- British War & Victory Medals.

3rd MAY **PRIVATE LEONARD TAYLOR**
1917 **12110. 9th Bn, Leicestershire Regiment.**

1892 Born Sileby.

1901 Age 9 living **Church Lane, Sileby.**

1911 Age 19 living **Church Lane, Sileby.**

1916 December reported wounded.

1917 May K.I.A after returning to France.

His Brother: Bristol Taylor also fell.

Sons of Vincent and Mary Taylor.

Awarded:- 1915 Star, British War & Victory Medals.

4th MAY **PRIVATE JOHN WILD**
1917 **12561. 8th Bn, Leicestershire Regiment.**

1894 Born Sileby.

1901 Census age 7, living **Swan Street, Sileby.**

1911 Census age 17, living **Swan Street, Sileby** (Shoe Hand)

1915 July 29th entered France

Son of Charles and Annie Wild, **44 Swan Street.**

1915 Star, British War & Victory Medals.

11th JUNE **AIRCRAFT WOMAN 1st CLASS BETTY ORTON**
1942 **2058675. Women's Auxiliary Air Force.**

Died on 11th June 1942 age 20.

Daughter of Stanley and Emily Jane Orton of **Sileby.**

Betty would be about 95 now!

Continues.....

24th MAY **PRIVATE JAMES STANIFORTH**
1917 **241858 1st/6th Bn, North Staffordshire Regiment.**

1895 Born Sileby.
1901 Census age 6, living **Cemetery Road, Sileby.**
1911 Census age 16, living **Cemetery Road, Sileby.**
Son of Elijah and Henrietta Staniforth. **4 King Street.**
Awarded:- British War & Victory Medals.

5th JUN **DRIVER THOMAS TOONE**
1917 **186525 ROYAL FIELD ARTILLERY**

1899 Born Sileby.
1901 Census age 2, living **Swan Street, Sileby.**
1911 Census age 12, living **Swan Street, Sileby.**
1917 Remembered 9th June with Honour **Sileby Cemetery.**

8th JUNE **PRIVATE GEORGE CLARRIDGE**
1917 **2024671st/ 5th Bn, Leicestershire Regiment.**

1898 Born Leicester.
1901 Census age 3.
1911 Census age 13, living **King Street, Sileby.**
Son of James and Ellen Clarridge, **10 King Street, Sileby.**
Awarded:- British War & Victory Medals.

18th JUNE **PRIVATE WILFRED JOHN WALKER**
1917 **27162 'A' Coy. 6th Bn, Leicestershire Regiment.**

1901 Census age 3, living **Barrow Road, Sileby.**
1911 Census age 13, living **Barrow Road, Sileby.**
Son of Arthur and Florence Walker, **98 Barrow Road.**
Awarded:- British War & Victory Medals.

I AM RUNNING OUT OF HERO'S

There must have been **100's of SOLDIERS** and at least
ONE WOMAN FROM SILEBY!

Have all of their photographs been thrown away?
Or are they stuffed in old draws and old books?

geoffreymrose@yahoo.co.uk



YOUR FIRST CUT & FINISH HALF PRICE!

FREE CONSULTATION


AWARD WINNING STYLISTS

KÉRASTASE PREMIER SALON

BOOK NOW AS SPACE IS LIMITED

To book call **01509 812 968** and quote '*Talk@Sileby First*' then simply present this advert at your appointment and let us transform your look...

LANZA

01509 812 968 · www.lanzahair.co.uk ·  LanzaHairDesign
Lanza Hair Design · 57 The Banks · Sileby · Leicestershire · LE12 7RD

*Appointments subject to availability with selected stylists Tuesday-Friday. Not to be used in conjunction with any other offer.
Offer only for new clients of Lanza Hair Design on their first visit. Reference must be quoted on booking and advert presented at appointment.